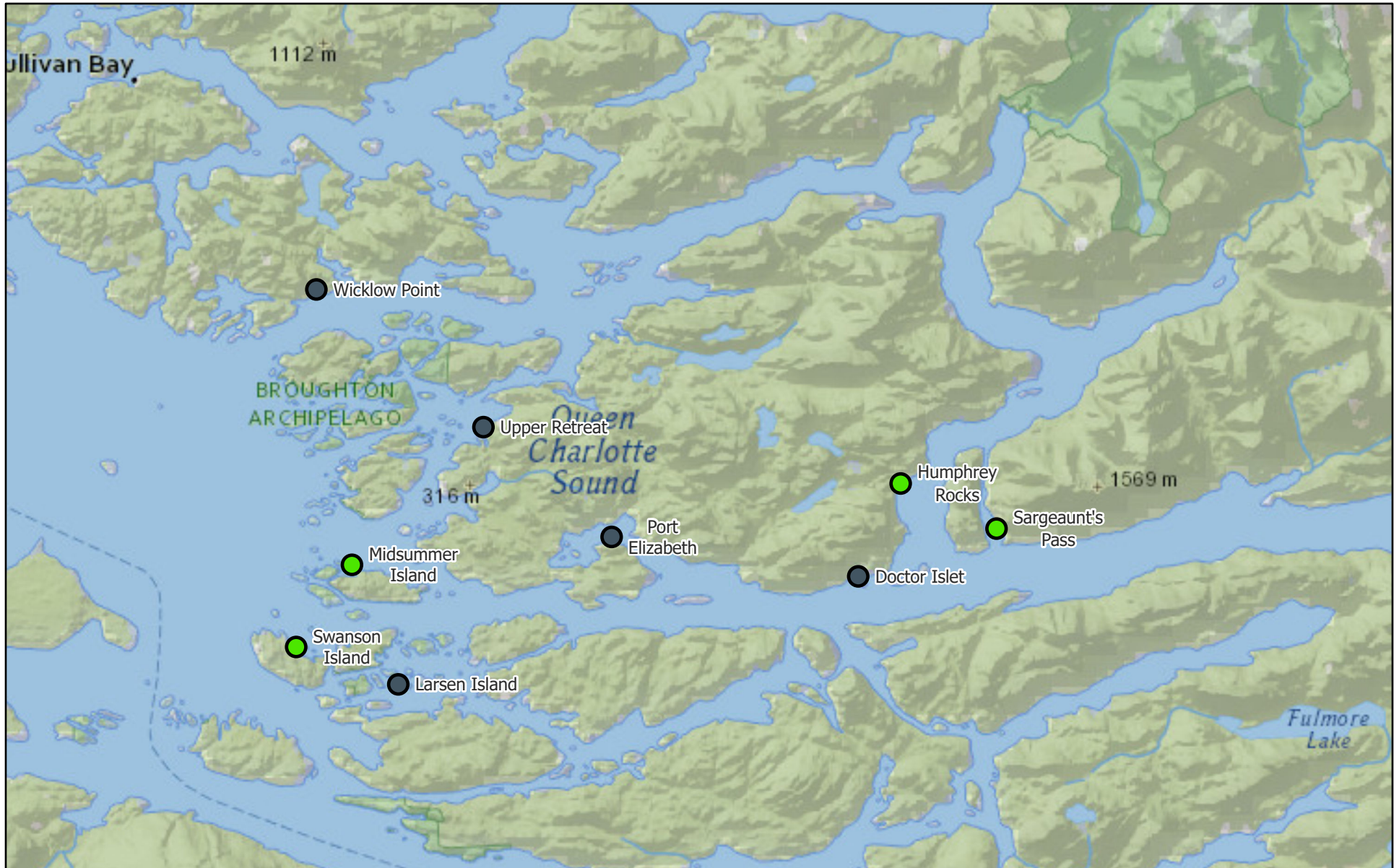


Monthly Sea Lice Monitoring March 2022 - Broughton



2022-04-11

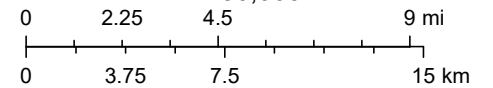
Monthly Sealice External

● ≤3.0 motile per fish

● Empty Mowi Sites

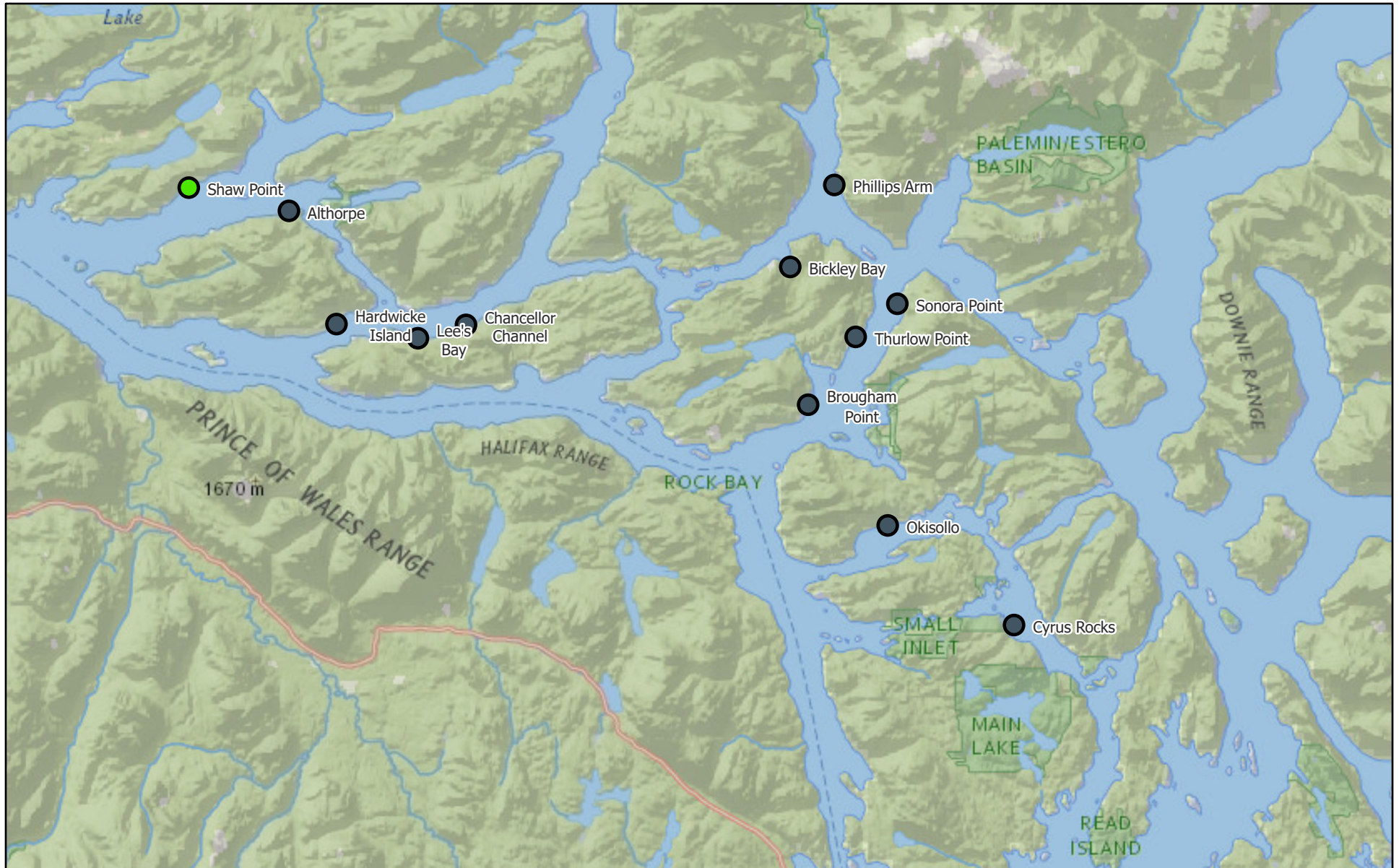
NatGeo_World_Map

1:450,000



National Geographic, Esri, Garmin, HERE, UNEP-WCMC, USGS, NASA, ESA, METI, NRCAN, GEBCO, NOAA, increment P Corp.

Monthly Sea Lice Monitoring March 2022 - Campbell River



2022-04-11

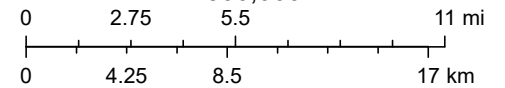
Monthly Sealice External

● ≤ 3.0 motile per fish

● Empty Mowi Sites

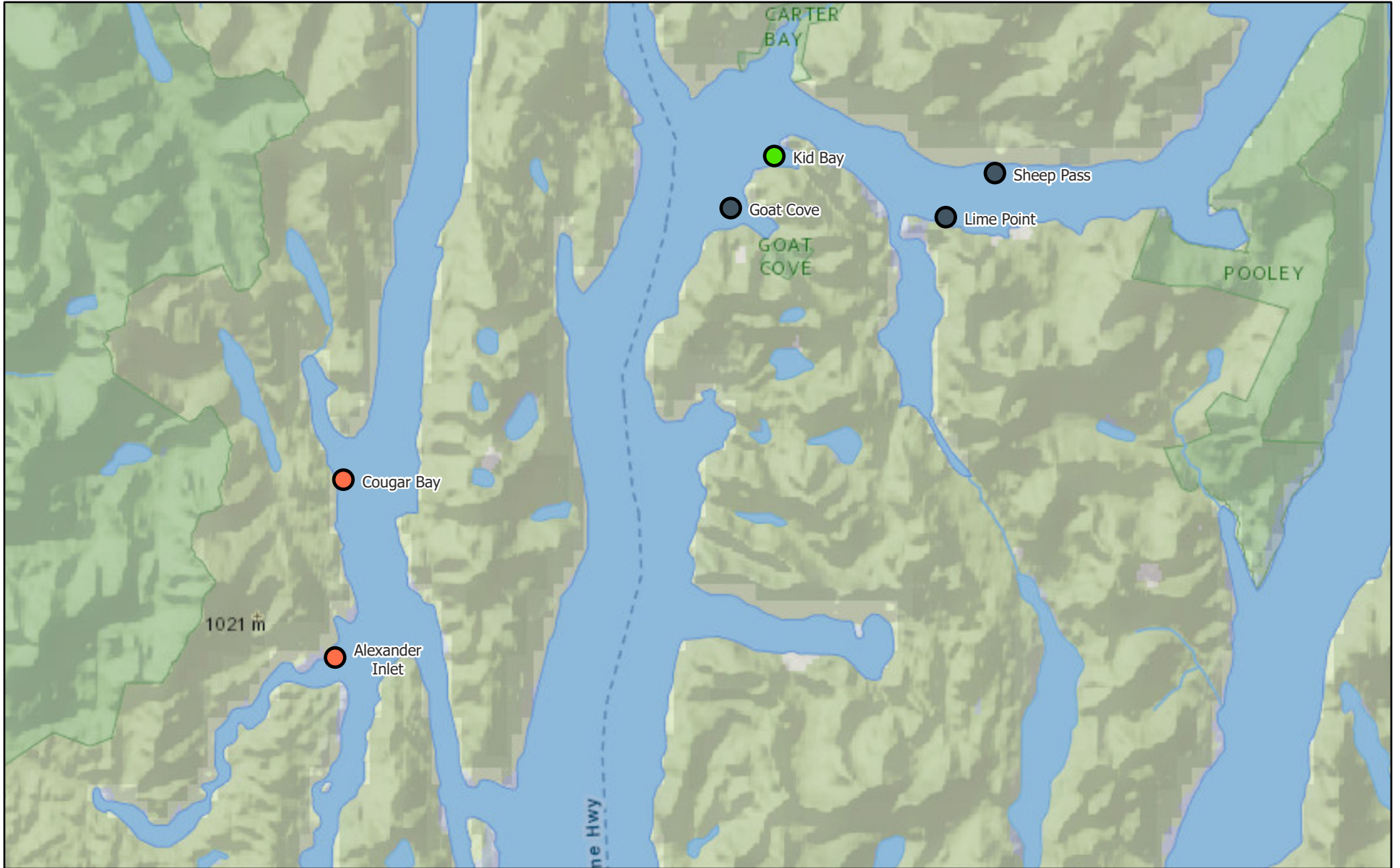
NatGeo_World_Map

1:500,000



National Geographic, Esri, Garmin, HERE, UNEP-WCMC, USGS, NASA, ESA, METI, NRCAN, GEBCO, NOAA, increment P Corp.

Monthly Sea Lice Monitoring March 2022 - Klemtu



2022-04-11

Monthly Sealice External

● ≤ 3.0 motile per fish

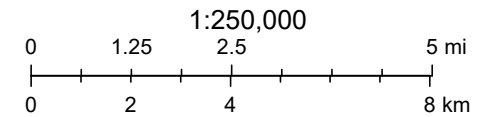


>3.0 motile per fish



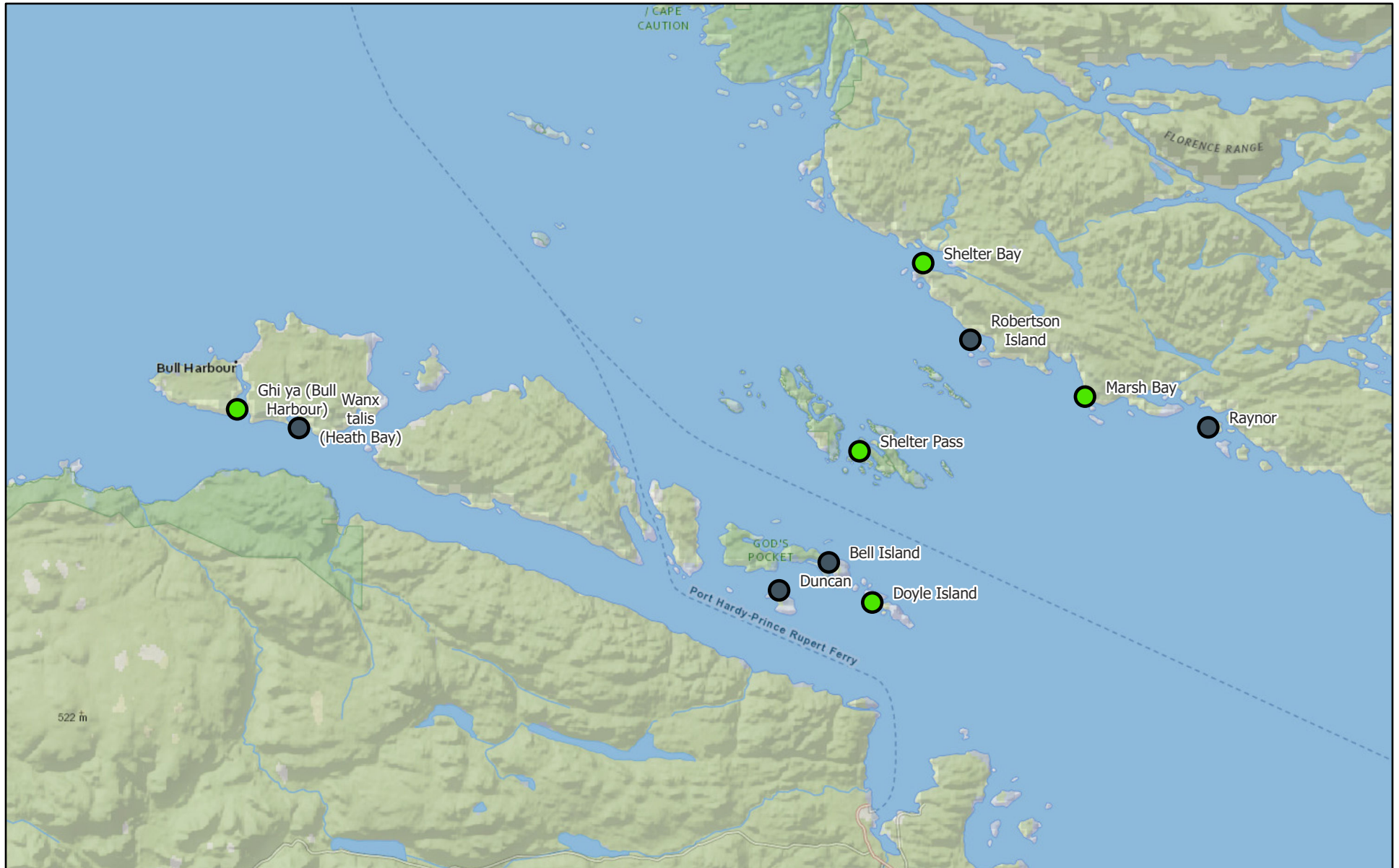
Empty Mowi Sites

NatGeo_World_Map



National Geographic, Esri, Garmin, HERE, UNEP-WCMC, USGS, NASA, ESA, METI, NRCAN, GEBCO, NOAA, increment P Corp.

Monthly Sea Lice Monitoring March 2022 - Port Hardy



4/11/2022

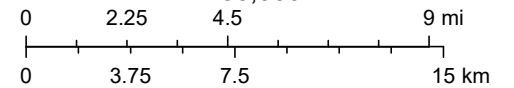
Monthly Sealice External

● ≤ 3.0 motile per fish

● Empty Mowi Sites

NatGeo_World_Map

1:430,000



National Geographic, Esri, Garmin, HERE, UNEP-WCMC, USGS, NASA, ESA, METI, NRCAN, GEBCO, NOAA, increment P Corp.

Monthly Sea Lice Monitoring March 2022 - Quatsino



4/11/2022

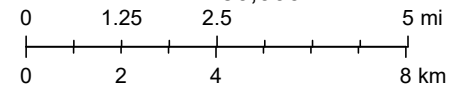
Monthly Sealice External

● ≤3.0 motile per fish

● Empty Mowi Sites

NatGeo_World_Map

1:250,000



National Geographic, Esri, Garmin, HERE, UNEP-WCMC, USGS, NASA, ESA, METI, NRCAN, GEBCO, NOAA, increment P Corp.

Area	Site	Month	Year	Avg Motile	Note	EMB Start	H202 Start	Hydrolicer Start	Freshwater Start
Broughton	Doctor Islet	3	2022		Smolt entry starting March 28, 2022				
Broughton	Humphrey Rocks	3	2022	0.51		2-Feb-22		25-Jan-22	27-Feb-22
Broughton	Larsen Island	3	2022						
Broughton	Midsummer Island	3	2022	0.96	Treatment planned for early April	14-Oct-21		11-Aug-21	21-Feb-22
Broughton	Port Elizabeth	3	2022						
Broughton	Sargeaunt's Pass	3	2022	0.99	Hydrolicer	3-Feb-22		15-Mar-22	
Broughton	Swanson Island	3	2022	0.97	Treatment planned for early April	19-Oct-21		8-Feb-22	30-Oct-21
Broughton	Upper Retreat	3	2022						
Broughton	Wicklow Point	3	2022						
Campbell River	Althorpe	3	2022						
Campbell River	Bickley Bay	3	2022						
Campbell River	Brougham Point	3	2022						
Campbell River	Chancellor Channel	3	2022						
Campbell River	Cyrus Rocks	3	2022						
Campbell River	Hardwicke Island	3	2022						
Campbell River	Lee's Bay	3	2022						
Campbell River	Phillips Arm	3	2022						
Campbell River	Shaw Point	3	2022	0.95		18-Jan-22		26-Feb-22	30-Mar-21
Campbell River	Okisollo	3	2022						
Campbell River	Sonora Point	3	2022						
Campbell River	Thurlow Point	3	2022						
Klemtu	Alexander Inlet	3	2022	4.12	Freshwater Treatment		9-Feb-22		29-Mar-22
Klemtu	Cougar Bay	3	2022	3.03	Freshwater Treatment		19-Aug-21		20-Mar-22
Klemtu	Goat Cove	3	2022						
Klemtu	Kid Bay	3	2022	2.38	Freshwater Treatment	6-Jul-21	4-Jan-21	13-May-21	7-Mar-22
Klemtu	Lime Point	3	2022						
Klemtu	Sheep Pass	3	2022		Smolt entry starting March 7, 2022				
Port Hardy	Bell Island	3	2022						
Port Hardy	Doyle Island	3	2022	0.00	Smolt entry starting March 1, 2022				
Port Hardy	Duncan	3	2022						
Port Hardy	Ghi ya (Bull Harbour)	3	2022	0.65					
Port Hardy	Marsh Bay	3	2022	1.09		14-Oct-21	16-Jul-21		9-Feb-22
Port Hardy	Raynor	3	2022						
Port Hardy	Robertson Island	3	2022						
Port Hardy	Shelter Bay	3	2022	0.95					
Port Hardy	Shelter Pass	3	2022	2.11		13-Feb-22			29-Oct-21
Port Hardy	Wanx talis (Heath Bay)	3	2022						
Quatsino	Cleagh Creek	3	2022						
Quatsino	Koskimo	3	2022		Fallow as of March 7, 2022	4-Jul-21			28-Nov-21
Quatsino	Mahatta East	3	2022	2.91	Harvesting and will be empty early in April	4-Jul-21	27-Jan-22		14-Jan-22
Quatsino	Mahatta West	3	2022	2.19		10-Jan-22		13-Feb-22	16-Dec-22
Quatsino	Monday Rocks	3	2022	1.78		17-Jan-22			2-Jan-22
Quatsino	Thorpe Point	3	2022						