

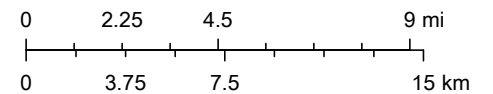
Monthly Sea Lice Monitoring January 2022 - Broughton



2/15/2022

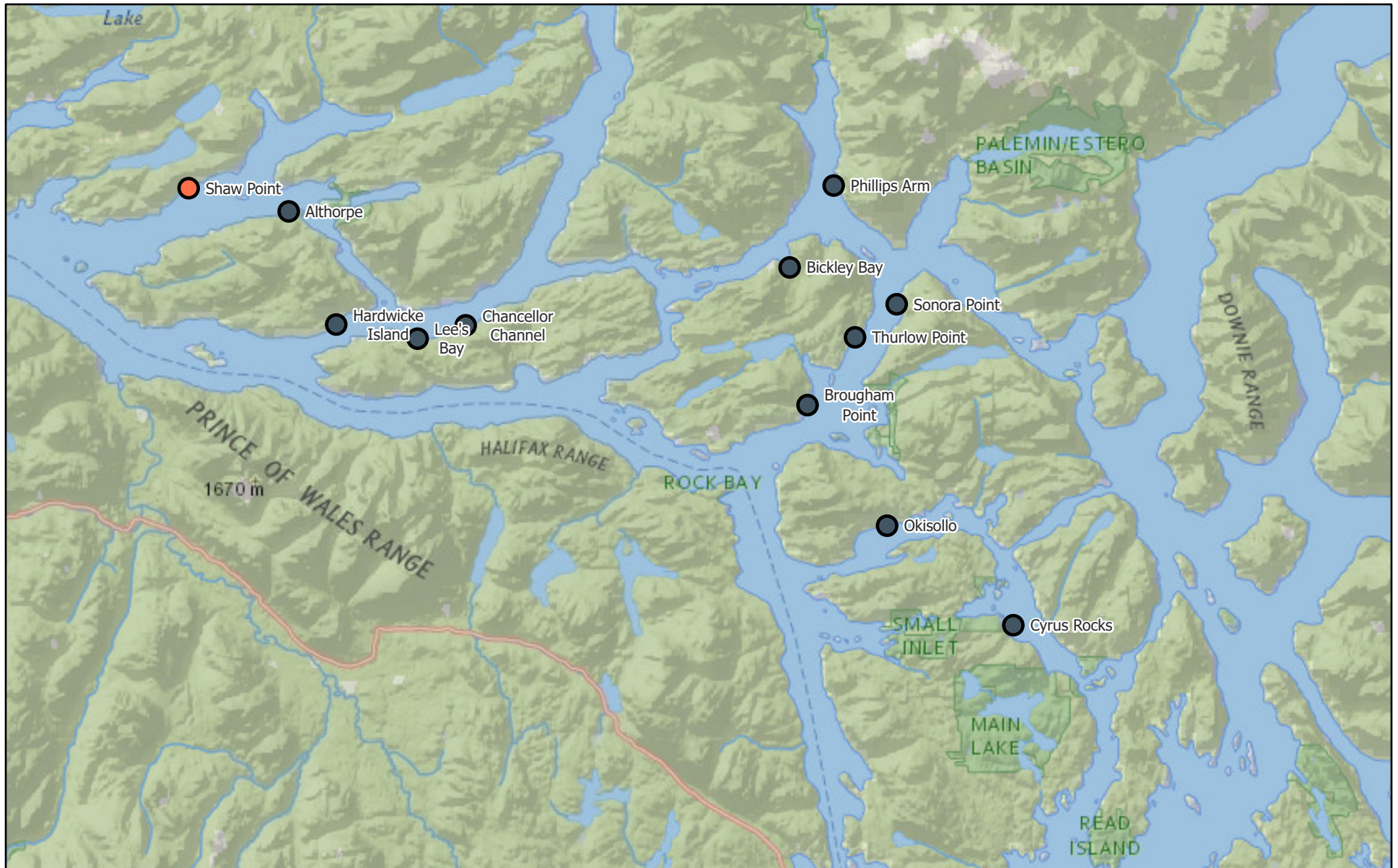
Monthly Sealice External ● Empty Mowi Sites
● ≤3.0 motile per fish

1:450,000



National Geographic, Esri, Garmin, HERE, UNEP-WCMC, USGS, NASA,

Monthly Sea Lice Monitoring January 2022 - Campbell River



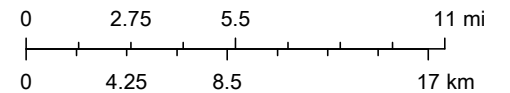
2/15/2022

Monthly Sealice External

● >3.0 motile per fish

● Empty Mowi Sites

1:500,000



National Geographic, Esri, Garmin, HERE, UNEP-WCMC, USGS, NASA,

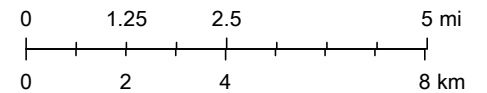
Monthly Sea Lice Monitoring January 2022 - Klemtu



2/15/2022

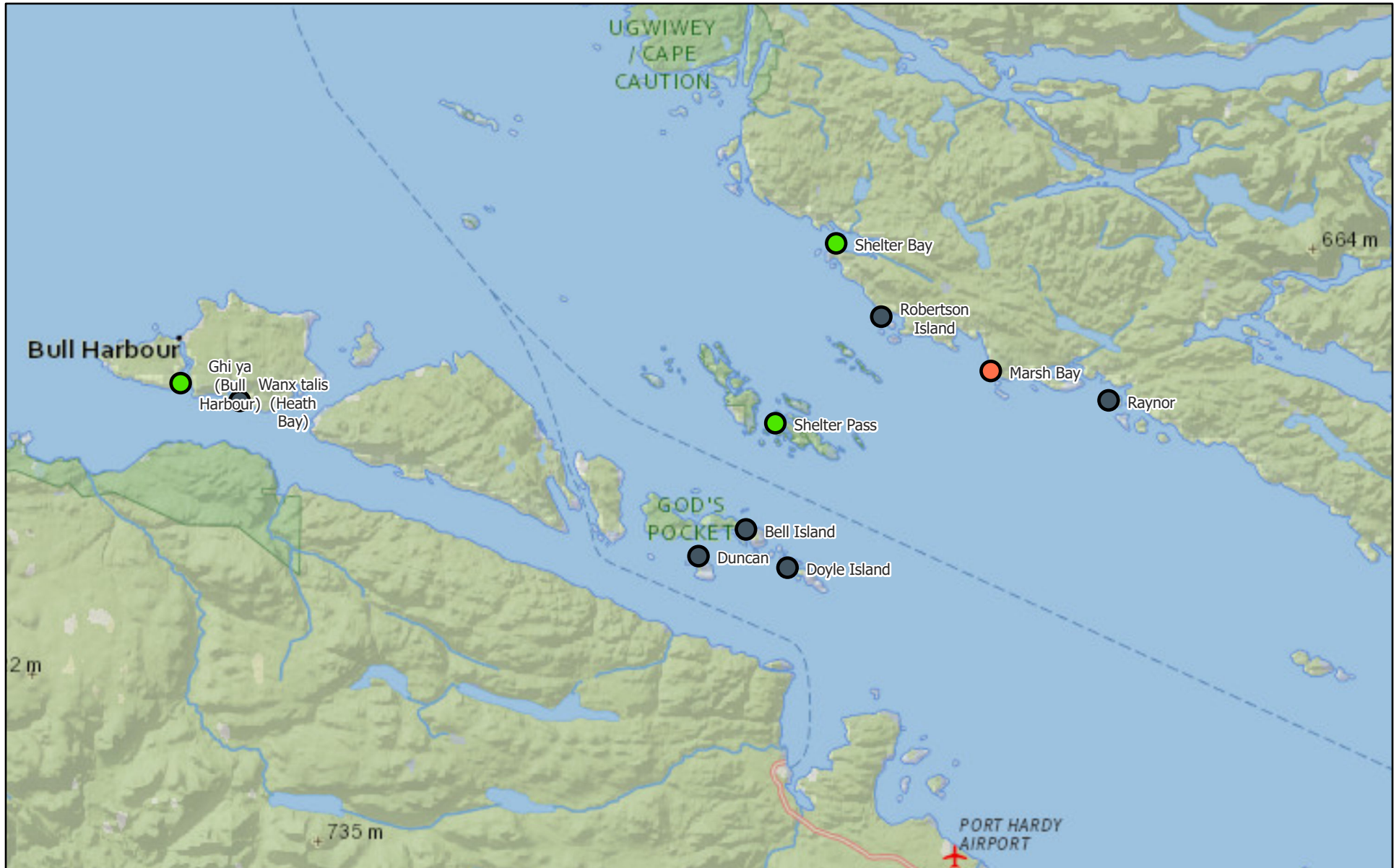
- Monthly Sealice External
- >3.0 motile per fish
 - ≤ 3.0 motile per fish
 - Empty Mowi Sites

1:250,000



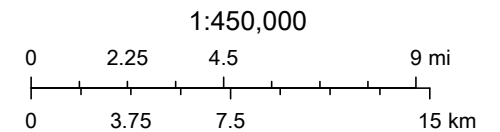
National Geographic, Esri, Garmin, HERE, UNEP-WCMC, USGS, NASA,

Monthly Sea Lice Monitoring January 2022 - Port Hardy



2/15/2022

- Monthly Sealice External
- ≤3.0 motile per fish
- >3.0 motile per fish
- Empty Mowi Sites



National Geographic, Esri, Garmin, HERE, UNEP-WCMC, USGS, NASA,

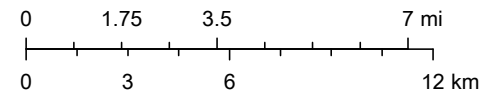
Monthly Sea Lice Monitoring January 2022 - Quatsino



2/15/2022

- Monthly Sealice External
- >3.0 motile per fish
- ≤ 3.0 motile per fish
- Empty Mowi Sites

1:350,000



National Geographic, Esri, Garmin, HERE, UNEP-WCMC, USGS, NASA,

Area	Site	Month	Year	Avg Motile	Note	EMB Start	H2O2 Start	Hydrolicer Start	Freshwater Start
Broughton	Doctor Islet	1	2022						
Broughton	Humphrey Rocks	1	2022	1.75	Hydrolicer 4/10 pens. SLICE to follow in early February			25-Jan-22	
Broughton	Larsen Island	1	2022						
Broughton	Midsummer Island	1	2022	0.52		14-Oct-21		11-Aug-21	19-Oct-21
Broughton	Port Elizabeth	1	2022						
Broughton	Sargeaunt's Pass	1	2022	1.66	SLICE to start in early February				
Broughton	Swanson Island	1	2022	1.14	Hydrolicer to start in early February	19-Oct-21		21-Sep-21	30-Oct-21
Broughton	Upper Retreat	1	2022						
Broughton	Wicklow Point	1	2022						
Campbell River	Althorpe	1	2022		Fallow as of January 10				
Campbell River	Bickley Bay	1	2022						
Campbell River	Brougham Point	1	2022						
Campbell River	Chancellor Channel	1	2022						
Campbell River	Cyrus Rocks	1	2022						
Campbell River	Hardwicke Island	1	2022						
Campbell River	Lee's Bay	1	2022						
Campbell River	Phillips Arm	1	2022						
Campbell River	Shaw Point	1	2022	5.01	SLICE treatment	18-Jan-22		15-Dec-21	30-Mar-21
Campbell River	Okisollo	1	2022						
Campbell River	Sonora Point	1	2022						
Campbell River	Thurlow Point	1	2022						
Klemtu	Alexander Inlet	1	2022	2.39	H2O2 for early February				
Klemtu	Cougar Bay	1	2022	9.82	FW treatment		19-Aug-21		27-Jan-22
Klemtu	Goat Cove	1	2022						
Klemtu	Kid Bay	1	2022	1.8	Grade harvesting ongoing	6-Jul-21	4-Jan-21	13-May-21	
Klemtu	Lime Point	1	2022						
Klemtu	Sheep Pass	1	2022						
Port Hardy	Bell Island	1	2022						
Port Hardy	Doyle Island	1	2022						
Port Hardy	Duncan	1	2022						
Port Hardy	Ghi ya (Bull Harbour)	1	2022	0.14					
Port Hardy	Marsh Bay	1	2022	5.24	Hydrolicer cancelled, FW treatment in early February followed by SLICE	14-Oct-21	16-Jul-21		8-Sep-21
Port Hardy	Raynor	1	2022						
Port Hardy	Robertson Island	1	2022						
Port Hardy	Shelter Bay	1	2022	0.38					
Port Hardy	Shelter Pass	1	2022	2.6	Harvesting followed by SLICE treatment planned for mid February				29-Oct-21
Port Hardy	Wanx talis (Heath Bay)	1	2022						
Quatsino	Cleagh Creek	1	2022						
Quatsino	Koskimo	1	2022	9.93	Harvesting and expected to be empty in early March	4-Jul-21			28-Nov-21
Quatsino	Mahatta East	1	2022	13.66	Completed half the site with FW and half the site with H2O2	4-Jul-21	27-Jan-22		14-Jan-22
Quatsino	Mahatta West	1	2022	2.68	SLICE treatment	10-Jan-22			16-Dec-22
Quatsino	Monday Rocks	1	2022	6.08	FW treatment followed by a SLICE treatment	17-Jan-22			2-Jan-22
Quatsino	Thorpe Point	1	2022						