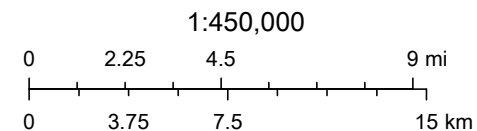


Monthly Sea Lice Monitoring September 2021 - Broughton



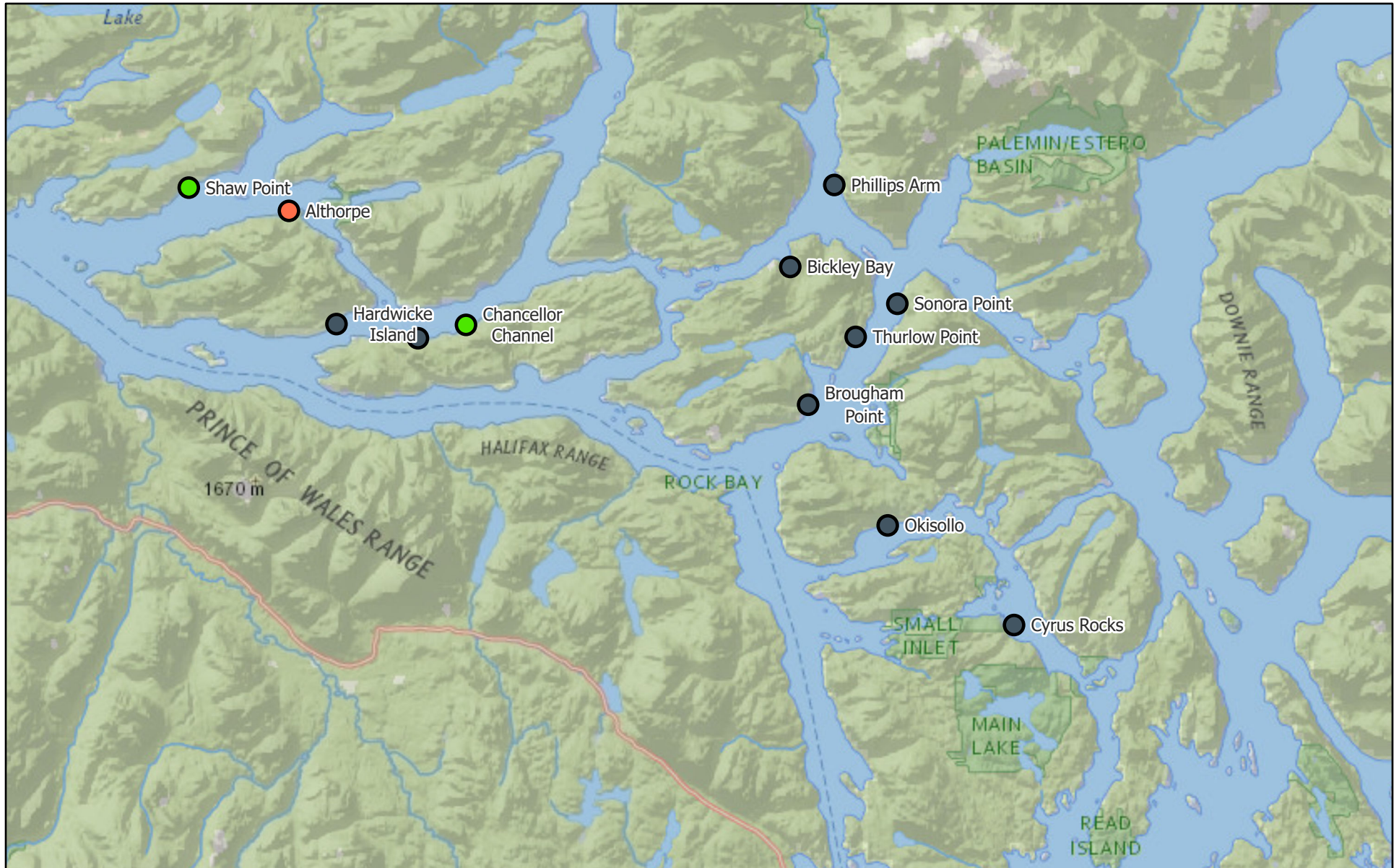
2021-10-14

- Monthly Sealice External
- ≤3.0 motile per fish
- >3.0 motile per fish
- Empty Mowi Sites



National Geographic, Esri, Garmin, HERE, UNEP-WCMC, USGS, NASA,

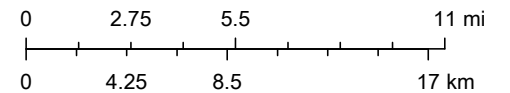
Monthly Sea Lice Monitoring September 2021 - Campbell River



2021-10-14

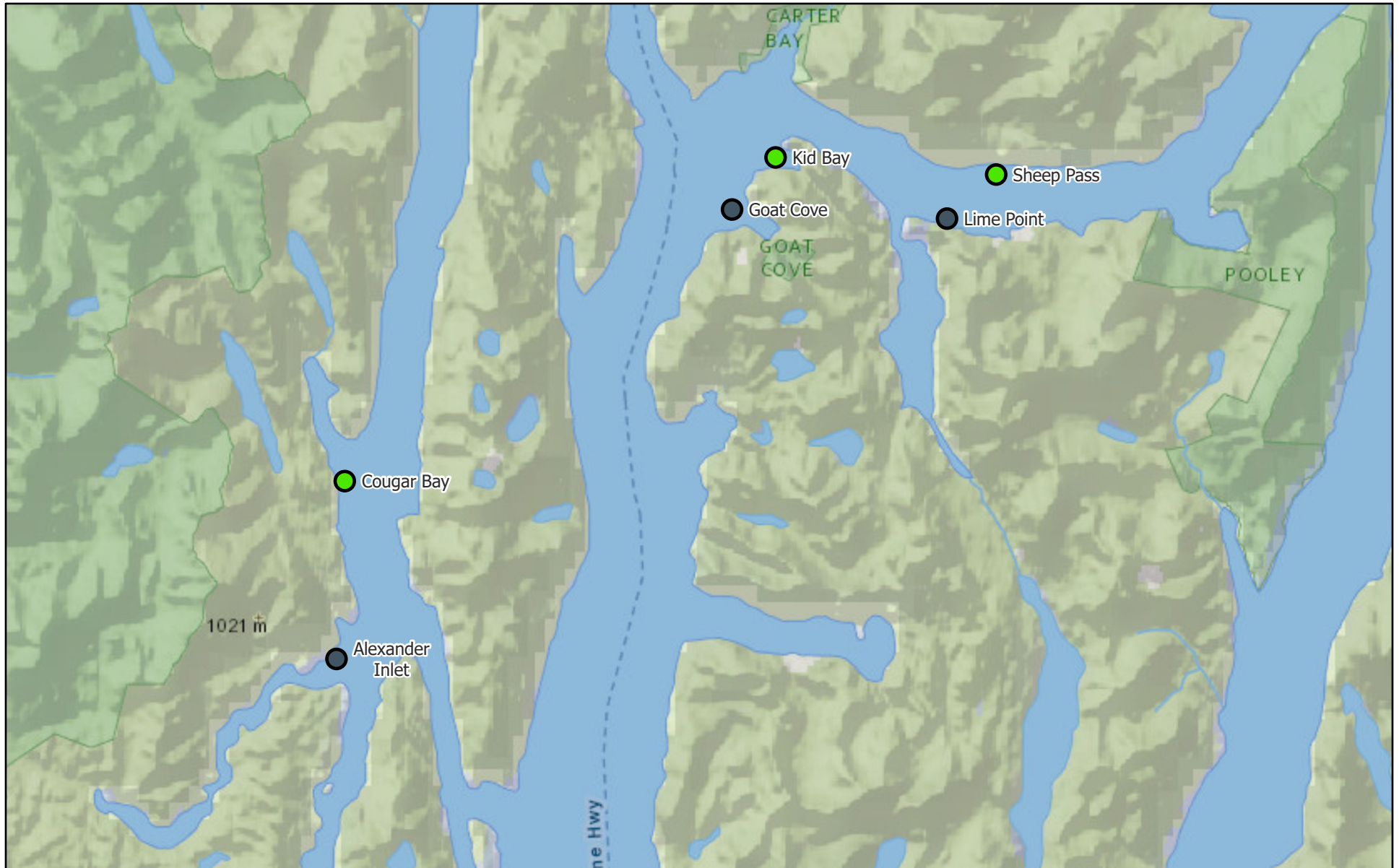
- Monthly Sealice External
- >3.0 motile per fish
- ≤3.0 motile per fish
- Empty Mowi Sites

1:500,000



National Geographic, Esri, Garmin, HERE, UNEP-WCMC, USGS, NASA,

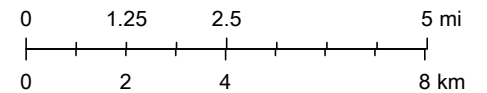
Monthly Sea Lice Monitoring September 2021 - Klemtu



2021-10-14

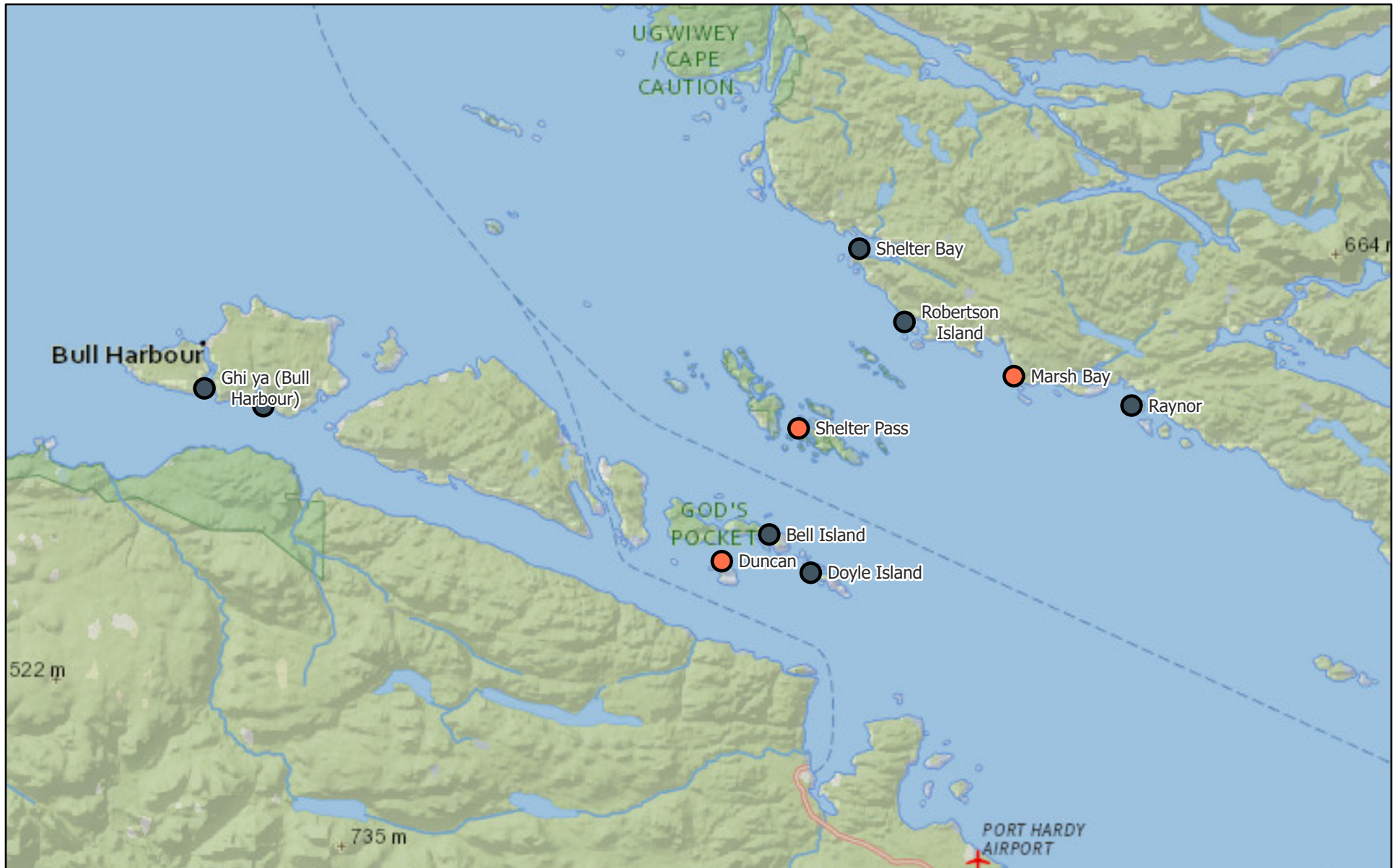
Monthly Sealice External ● Empty Mowi Sites
● ≤3.0 motile per fish

1:250,000



National Geographic, Esri, Garmin, HERE, UNEP-WCMC, USGS, NASA,

Monthly Sea Lice Monitoring September 2021 - Port Hardy

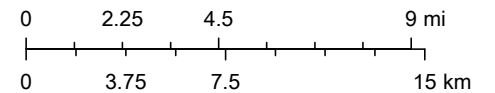


2021-10-14

Monthly Sealice External ● Empty Mowi Sites

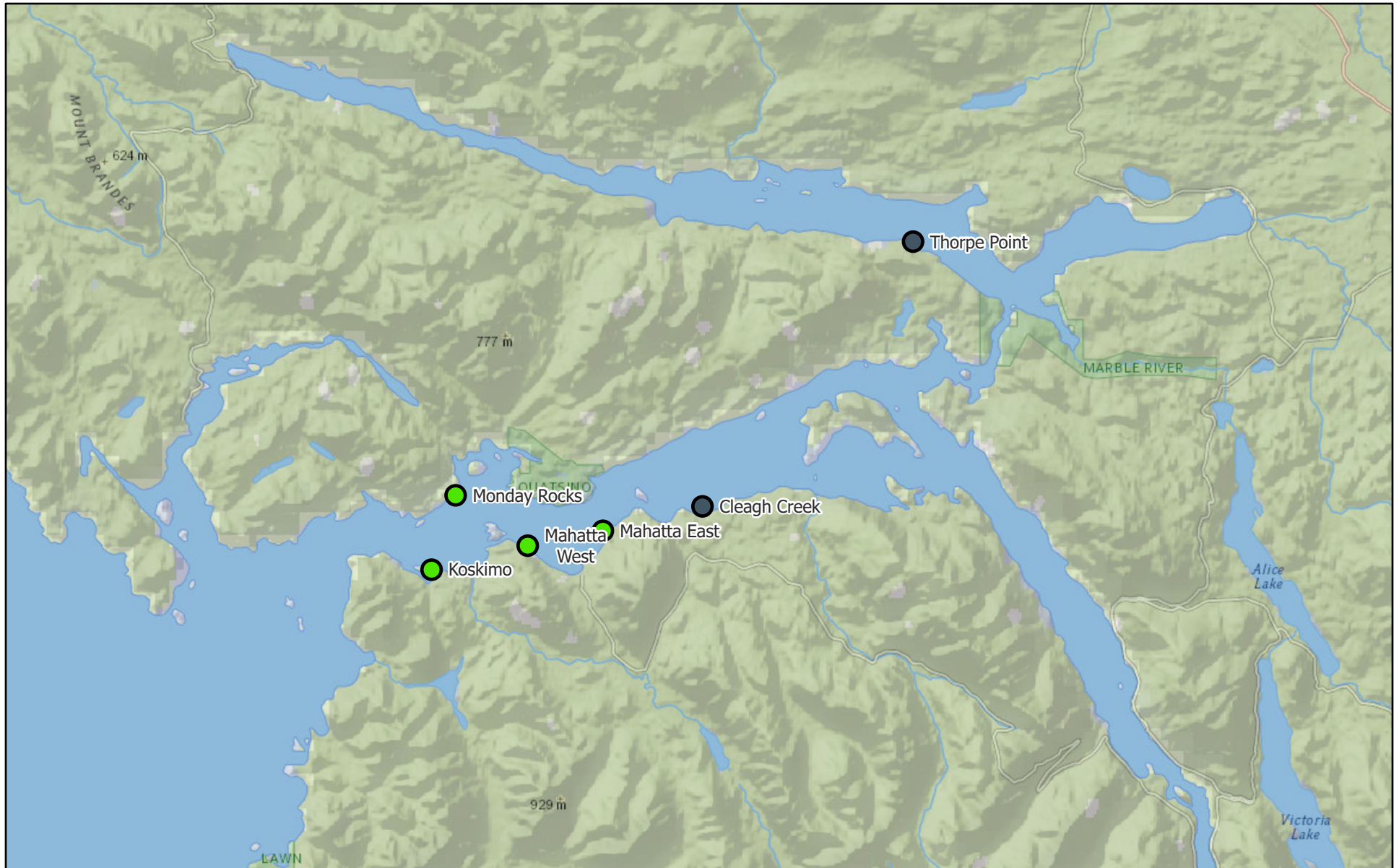
● >3.0 motile per fish

1:450,000



National Geographic, Esri, Garmin, HERE, UNEP-WCMC, USGS, NASA,

Monthly Sea Lice Monitoring September 2021 - Quatsino



2021-10-14

Monthly Sealice External

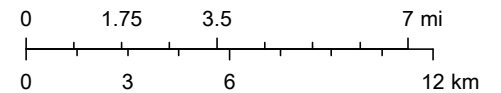


Empty Mowi Sites



≤ 3.0 motile per fish

1:350,000



National Geographic, Esri, Garmin, HERE, UNEP-WCMC, USGS, NASA,

Area	Site	Month	Year	Avg Motile	Note	EMB Start	H202 Start	Hydrolicer Start	Freshwater Start
Broughton	Doctor Islet	9	2021	0.95		2-Feb-21		22-Mar-21	
Broughton	Humphrey Rocks	9	2021	0.42					
Broughton	Larsen Island	9	2021						
Broughton	Midsummer Island	9	2021	5.09	SLICE planned after FW treatment			11-Aug-21	30-Sep-21
Broughton	Port Elizabeth	9	2021						
Broughton	Sargeaunt's Pass	9	2021	0.05					
Broughton	Swanson Island	9	2021	2.81	FW treatment planned for early October			21-Sep-21	
Broughton	Upper Retreat	9	2021						
Broughton	Wicklow Point	9	2021	1.6	Harvesting	13-Jul-21		4-Dec-20	7-Jul-21
Campbell River	Althorpe	9	2021	9.98	FW on 5 pens and harvested 2 pens	14-Feb-21			22-Sep-21
Campbell River	Bickley Bay	9	2021						
Campbell River	Brougham Point	9	2021						
Campbell River	Chancellor Channel	9	2021						
Campbell River	Cyrus Rocks	9	2021						
Campbell River	Hardwicke Island	9	2021						
Campbell River	Lee's Bay	9	2021						
Campbell River	Phillips Arm	9	2021						
Campbell River	Shaw Point	9	2021	2.7		5-Sep-19		26-Feb-20	30-Mar-21
Campbell River	Okisollo	9	2021						
Campbell River	Sonora Point	9	2021						
Campbell River	Thurlow Point	9	2021						
Klemtu	Alexander Inlet	9	2021						
Klemtu	Cougar Bay	9	2021	1.87	FW treatment planned in October		19-Aug-21		
Klemtu	Goat Cove	9	2021						
Klemtu	Kid Bay	9	2021	0.26		6-Jul-21	4-Jan-21	13-May-21	
Klemtu	Lime Point	9	2021						
Klemtu	Sheep Pass	9	2021	0.13		6-Jul-21	12-May-21		9-May-21
Port Hardy	Bell Island	9	2021						
Port Hardy	Doyle Island	9	2021						
Port Hardy	Duncan	9	2021	11.44	Harvesting	26-Mar-21	8-Apr-21		7-Jul-20
Port Hardy	Ghi ya (Bull Harbour)	9	2021						
Port Hardy	Marsh Bay	9	2021	7.94	SLICE to start in mid October		16-Jul-21		8-Sep-21
Port Hardy	Raynor	9	2021						
Port Hardy	Robertson Island	9	2021						
Port Hardy	Shelter Bay	9	2021						
Port Hardy	Shelter Pass	9	2021	4.08	H202 planned for October				3-Aug-21
Port Hardy	Wanx talis (Heath Bay)	9	2021						
Quatsino	Cleagh Creek	9	2021						
Quatsino	Koskimo	9	2021	0.56		4-Jul-21			
Quatsino	Mahatta East	9	2021	0.66		4-Jul-21			
Quatsino	Mahatta West	9	2021	0.62		4-Jul-21			
Quatsino	Monday Rocks	9	2021	0.24		4-Jul-21			
Quatsino	Thorpe Point	9	2021						