

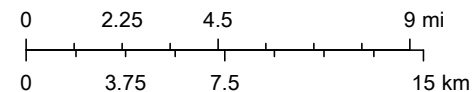
Monthly Sea Lice Monitoring October 2021- Broughton



2021-11-15

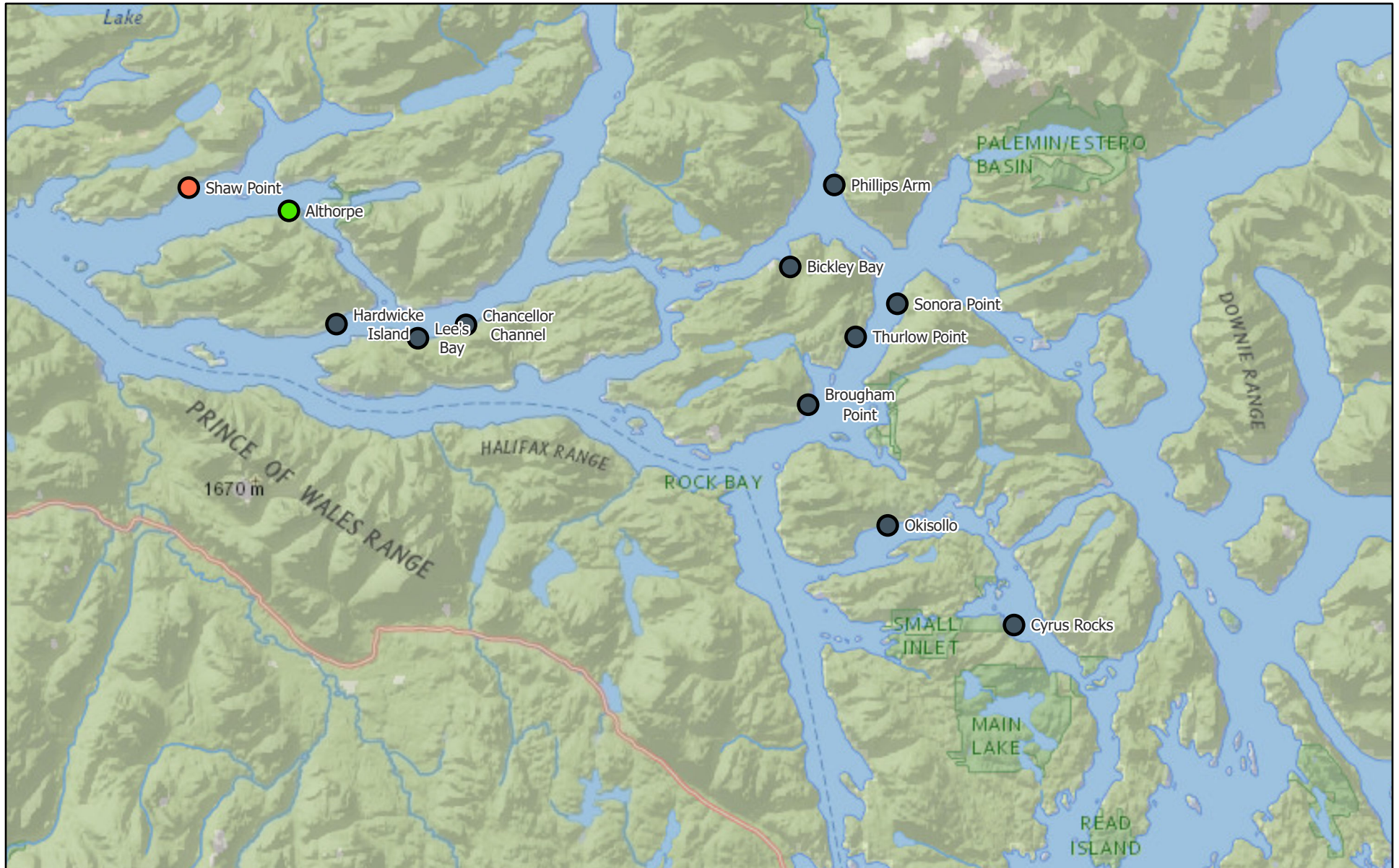
- Monthly Sealice External
- >3.0 motile per fish
- ≤3.0 motile per fish
- Empty Mowi Sites

1:450,000



National Geographic, Esri, Garmin, HERE, UNEP-WCMC, USGS, NASA,

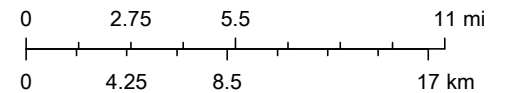
Monthly Sea Lice Monitoring October 2021 - Campbell River



2021-11-15

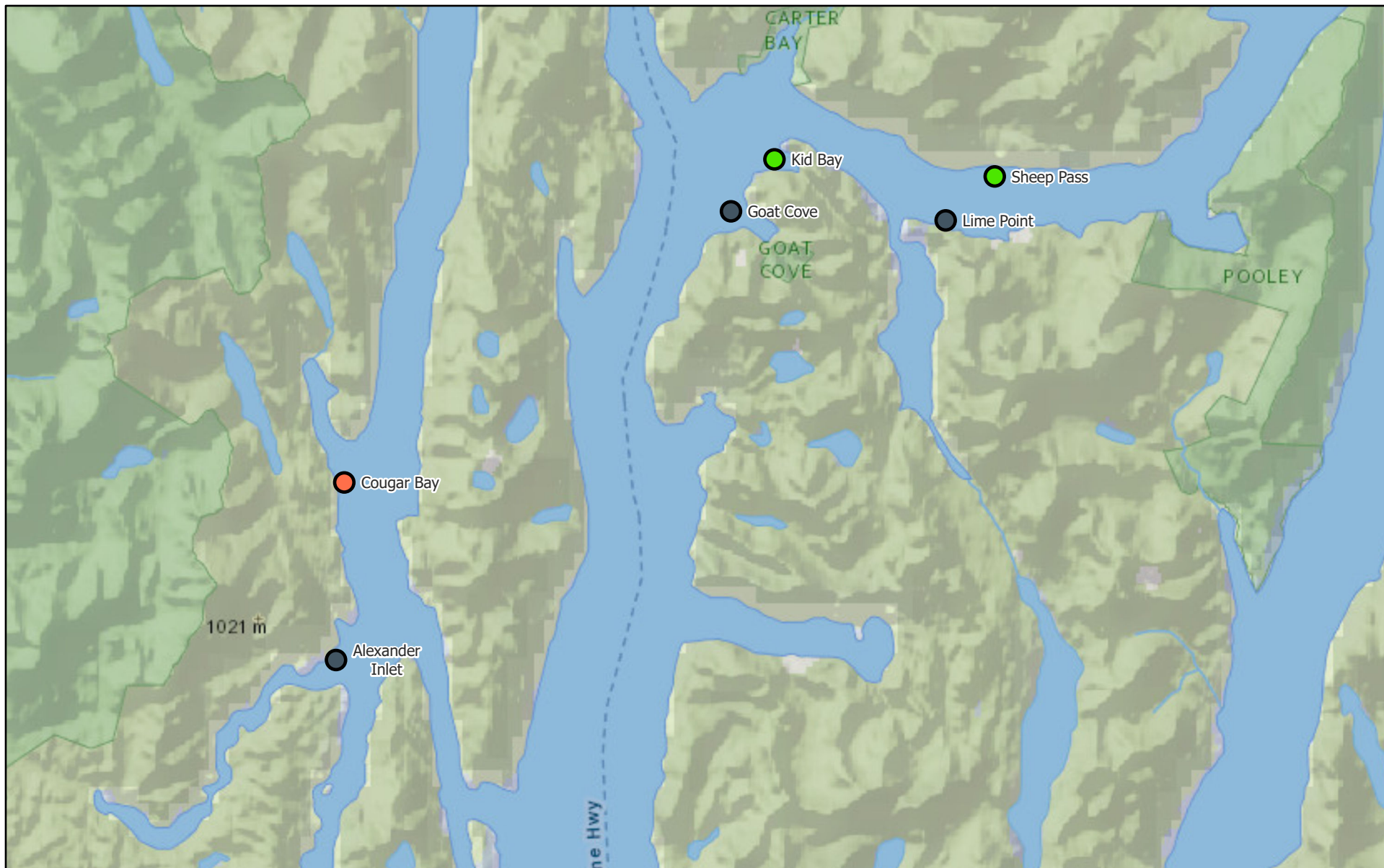
- Monthly Sealice External
- >3.0 motile per fish
 - ≤3.0 motile per fish
 - Empty Mowi Sites

1:500,000



National Geographic, Esri, Garmin, HERE, UNEP-WCMC, USGS, NASA,

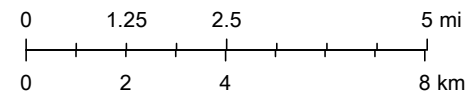
Monthly Sea Lice Monitoring October 2021 - Klemtu



2021-11-15

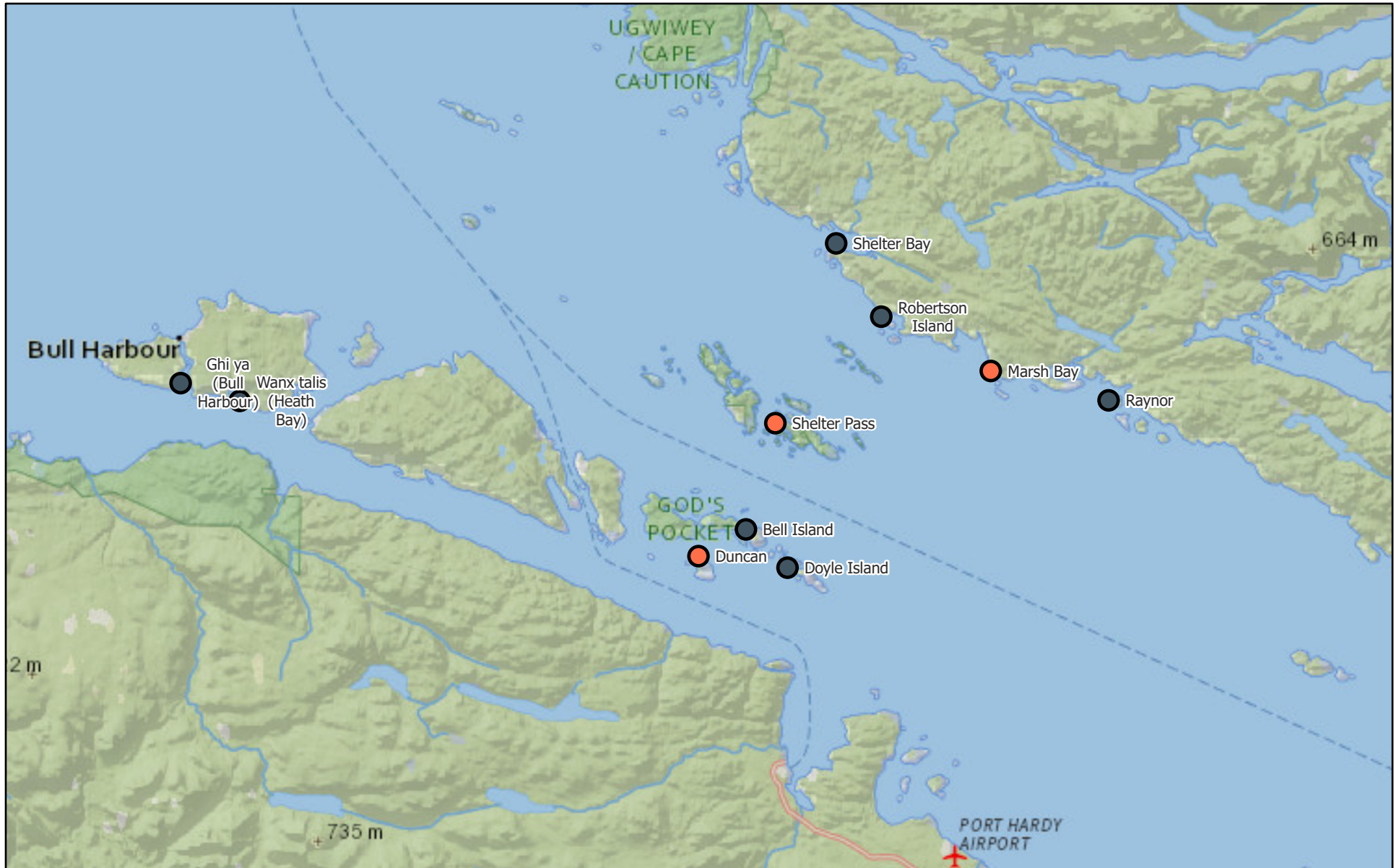
- Monthly Sealice External
- >3.0 motile per fish
 - ≤3.0 motile per fish
 - Empty Mowi Sites

1:250,000



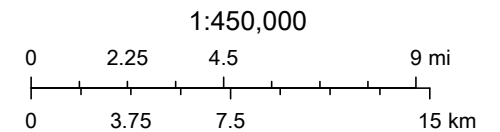
National Geographic, Esri, Garmin, HERE, UNEP-WCMC, USGS, NASA,

Monthly Sea Lice Monitoring October 2021 - Port Hardy



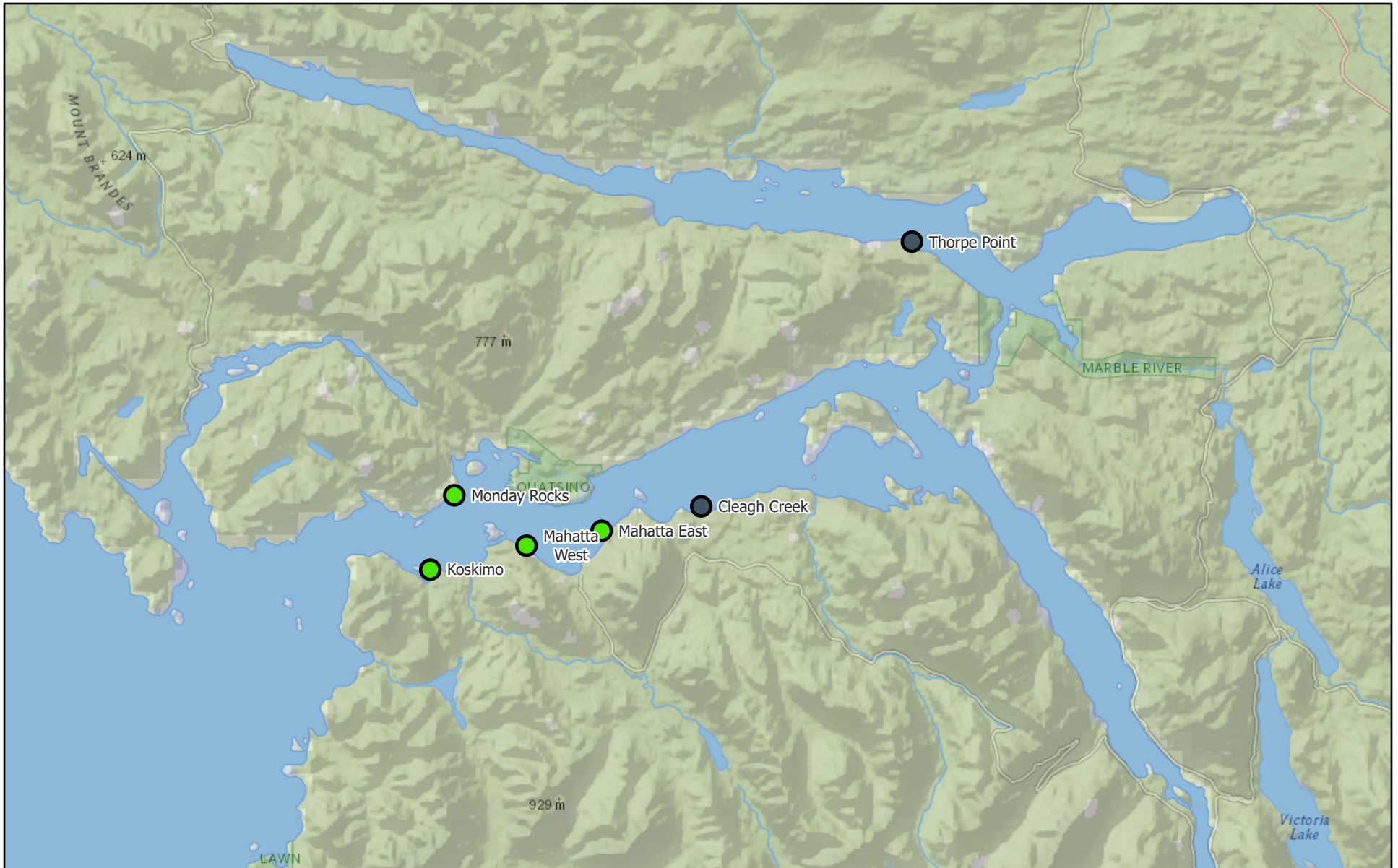
2021-11-15

- Monthly Sealice External
- Empty Mowi Sites
- >3.0 motile per fish



National Geographic, Esri, Garmin, HERE, UNEP-WCMC, USGS, NASA,

Monthly Sea Lice Monitoring October 2021 - Quatsino



2021-11-15

Monthly Sealice External

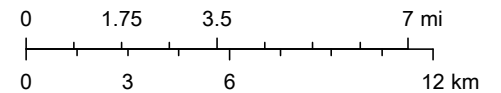


Empty Mowi Sites



≤3.0 motile per fish

1:350,000



National Geographic, Esri, Garmin, HERE, UNEP-WCMC, USGS, NASA,

Area	Site	Month	Year	Avg Motile	Note	EMB Start	H202 Start	Hydrolicer Start	Freshwater Start
Broughton	Doctor Islet	10	2021	0.89		2-Feb-21		22-Mar-21	
Broughton	Humphrey Rocks	10	2021	0.87	Hydrolicer planned for early November				
Broughton	Larsen Island	10	2021						
Broughton	Midsummer Island	10	2021	1.06	SLICE and FW treatments	14-Oct-21		11-Aug-21	19-Oct-21
Broughton	Port Elizabeth	10	2021						
Broughton	Sargeant's Pass	10	2021	0.05					
Broughton	Swanson Island	10	2021	1.89	SLICE and FW treatments	19-Oct-21		21-Sep-21	30-Oct-21
Broughton	Upper Retreat	10	2021						
Broughton	Wicklow Point	10	2021	3.5	Site harvested out as of October 26, 2021	13-Jul-21		4-Dec-20	7-Jul-21
Campbell River	Althorpe	10	2021	0.73		14-Feb-21			22-Sep-21
Campbell River	Bickley Bay	10	2021						
Campbell River	Brougham Point	10	2021						
Campbell River	Chancellor Channel	10	2021						
Campbell River	Cyrus Rocks	10	2021						
Campbell River	Hardwicke Island	10	2021						
Campbell River	Lee's Bay	10	2021						
Campbell River	Phillips Arm	10	2021						
Campbell River	Shaw Point	10	2021	8.15	Hydrolicer planned for mid November	5-Sep-19		26-Feb-20	30-Mar-21
Campbell River	Okisollo	10	2021						
Campbell River	Sonora Point	10	2021						
Campbell River	Thurlow Point	10	2021						
Klemtu	Alexander Inlet	10	2021						
Klemtu	Cougar Bay	10	2021	5	treatment delayed until November		19-Aug-21		
Klemtu	Goat Cove	10	2021						
Klemtu	Kid Bay	10	2021	0.54		6-Jul-21	4-Jan-21	13-May-21	
Klemtu	Lime Point	10	2021						
Klemtu	Sheep Pass	10	2021	0.18	Harvesting	6-Jul-21	12-May-21		9-May-21
Port Hardy	Bell Island	10	2021						
Port Hardy	Doyle Island	10	2021						
Port Hardy	Duncan	10	2021	10.05	Harvesting and expected to be empty in mid November	26-Mar-21	8-Apr-21		7-Jul-20
Port Hardy	Ghi ya (Bull Harbour)	10	2021						
Port Hardy	Marsh Bay	10	2021	6.07	SLICE	14-Oct-21	16-Jul-21		8-Sep-21
Port Hardy	Raynor	10	2021						
Port Hardy	Robertson Island	10	2021						
Port Hardy	Shelter Bay	10	2021		smolt entry starting Oct 26, 2021				
Port Hardy	Shelter Pass	10	2021	8.1	FW treatment to start early November				3-Aug-21
Port Hardy	Wanx talis (Heath Bay)	10	2021						
Quatsino	Cleagh Creek	10	2021						
Quatsino	Koskimo	10	2021	1.33		4-Jul-21			
Quatsino	Mahatta East	10	2021	1.33		4-Jul-21			
Quatsino	Mahatta West	10	2021	1.01		4-Jul-21			
Quatsino	Monday Rocks	10	2021	1.07		4-Jul-21			
Quatsino	Thorpe Point	10	2021						