

# Monthly Sea Lice Monitoring December 2021 - Broughton

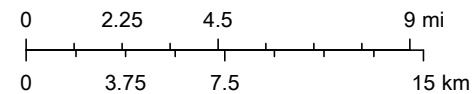


2022-01-04

Monthly Sealice External ● Empty Mowi Sites

● ≤3.0 motile per fish

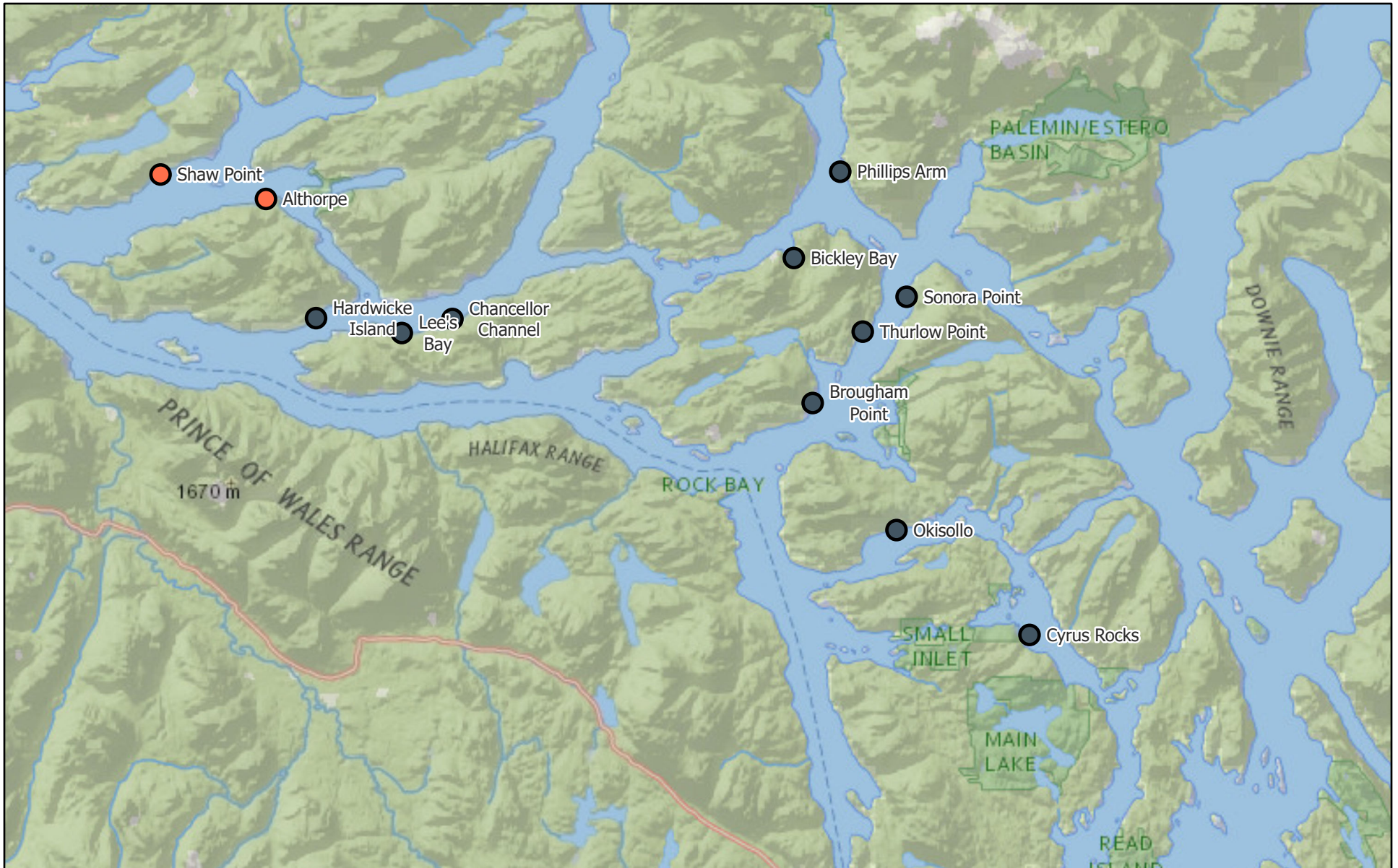
1:450,000



National Geographic, Esri, Garmin, HERE, UNEP-WCMC, USGS, NASA,



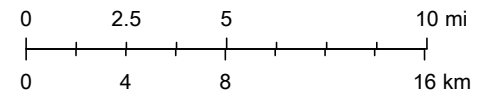
# Monthly Sea Lice Monitoring December 2021 - Campbell River



2022-01-04

Monthly Sealice External ● Empty Mowi Sites  
● >3.0 motile per fish

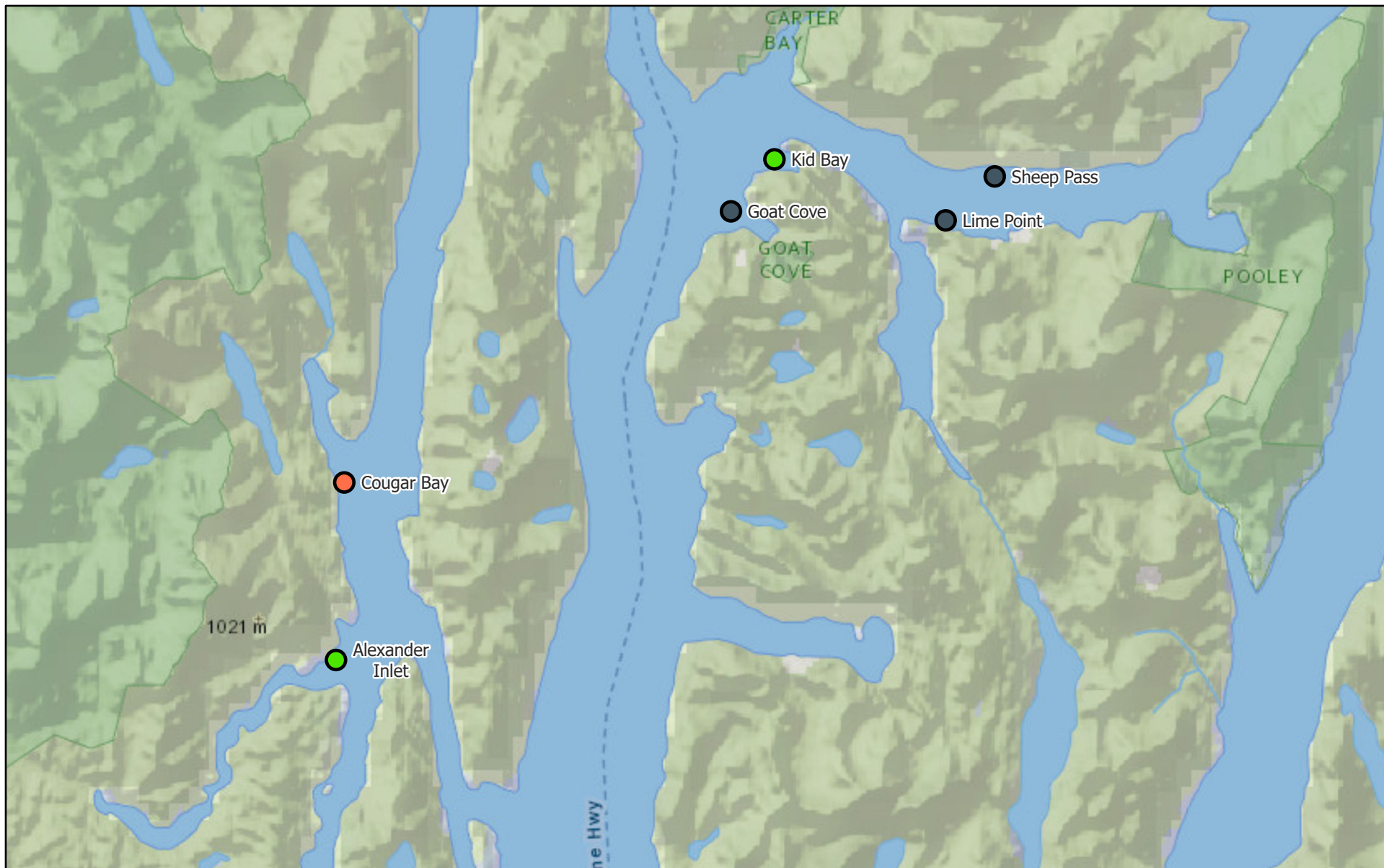
1:475,000



National Geographic, Esri, Garmin, HERE, UNEP-WCMC, USGS, NASA,



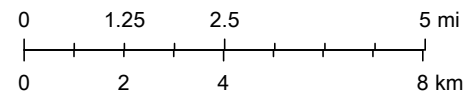
# Monthly Sea Lice Monitoring December 2021 - Klemtu



2022-01-04

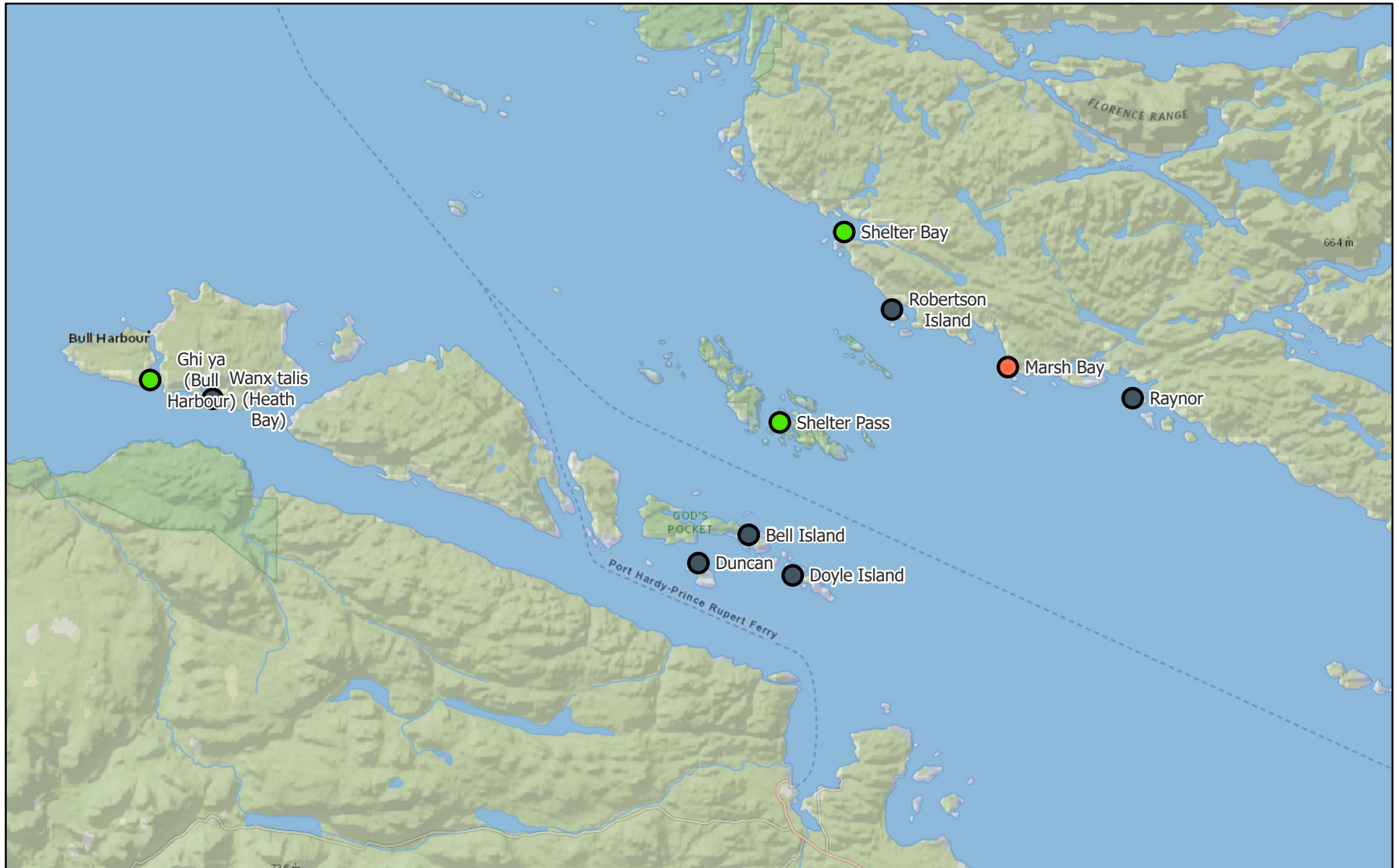
- Monthly Sealice External
- >3.0 motile per fish
  - ≤3.0 motile per fish
  - Empty Mowi Sites

1:250,000



National Geographic, Esri, Garmin, HERE, UNEP-WCMC, USGS, NASA,

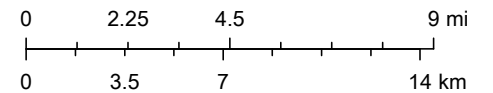
# Monthly Sea Lice Monitoring December 2021 - Port Hardy



2022-01-04

- Monthly Sealice External
- ≤3.0 motile per fish
- >3.0 motile per fish
- Empty Mowi Sites

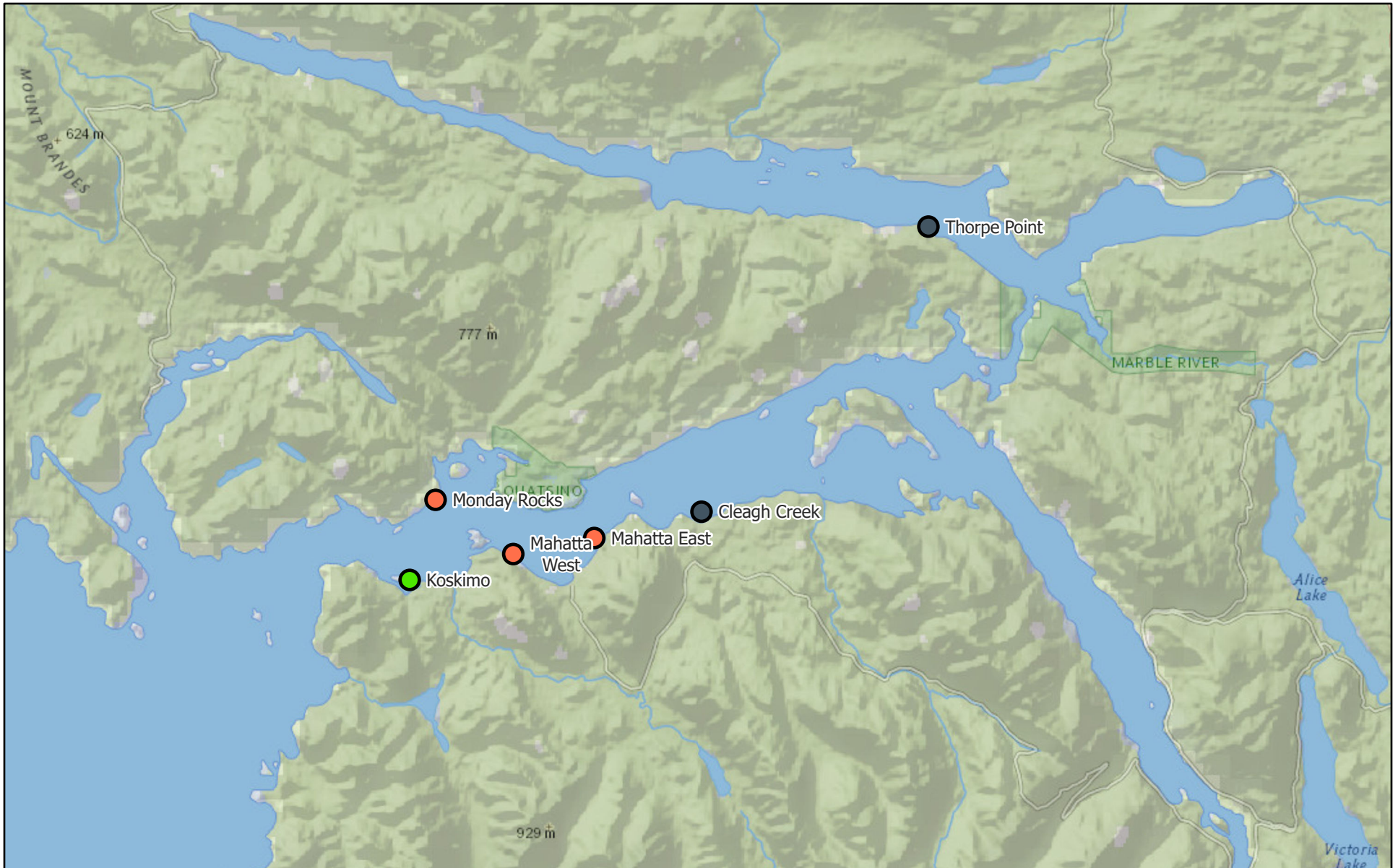
1:425,000



National Geographic, Esri, Garmin, HERE, UNEP-WCMC, USGS, NASA,

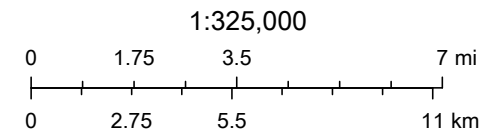


# Monthly Sea Lice Monitoring December 2021 - Quatsino



2022-01-04

- Monthly Sealice External
- >3.0 motile per fish
- ≤3.0 motile per fish
- Empty Mowi Sites



National Geographic, Esri, Garmin, HERE, UNEP-WCMC, USGS, NASA,

Area	Site	Month	Year	Avg Motile	Note	EMB Start	H202 Start	Hydrolicer Start	Freshwater Start
Broughton	Doctor Islet	12	2021						
Broughton	Humphrey Rocks	12	2021	0.73				13-Nov-21	
Broughton	Larsen Island	12	2021						
Broughton	Midsummer Island	12	2021	0.25		14-Oct-21		11-Aug-21	19-Oct-21
Broughton	Port Elizabeth	12	2021						
Broughton	Sargeant's Pass	12	2021	0.75					
Broughton	Swanson Island	12	2021	0.5		19-Oct-21		21-Sep-21	30-Oct-21
Broughton	Upper Retreat	12	2021						
Broughton	Wicklow Point	12	2021						
Campbell River	Althorpe	12	2021	7.85	Harvesting and to be empty in early January	14-Feb-21			22-Sep-21
Campbell River	Bickley Bay	12	2021						
Campbell River	Brougham Point	12	2021						
Campbell River	Chancellor Channel	12	2021						
Campbell River	Cyrus Rocks	12	2021						
Campbell River	Hardwicke Island	12	2021						
Campbell River	Lee's Bay	12	2021						
Campbell River	Phillips Arm	12	2021						
Campbell River	Shaw Point	12	2021	4.89	Hydrolicer treatment	5-Sep-19		15-Dec-21	30-Mar-21
Campbell River	Okisollo	12	2021						
Campbell River	Sonora Point	12	2021						
Campbell River	Thurlow Point	12	2021						
Klemtu	Alexander Inlet	12	2021	0.65	Treatment planned for January				
Klemtu	Cougar Bay	12	2021	8.92	Treatment planned for January		19-Aug-21		
Klemtu	Goat Cove	12	2021						
Klemtu	Kid Bay	12	2021	1.35	Harvesting and Treatment planned for January	6-Jul-21	4-Jan-21	13-May-21	
Klemtu	Lime Point	12	2021						
Klemtu	Sheep Pass	12	2021		Fallow as of Dec 16, 2021	6-Jul-21	12-May-21		9-May-21
Port Hardy	Bell Island	12	2021						
Port Hardy	Doyle Island	12	2021						
Port Hardy	Duncan	12	2021						
Port Hardy	Ghi ya (Bull Harbour)	12	2021	0					
Port Hardy	Marsh Bay	12	2021	5.89	Hydrolicer planned for early January	14-Oct-21	16-Jul-21		8-Sep-21
Port Hardy	Raynor	12	2021						
Port Hardy	Robertson Island	12	2021						
Port Hardy	Shelter Bay	12	2021	0.17					
Port Hardy	Shelter Pass	12	2021	1.86	Harvesting				29-Oct-21
Port Hardy	Wanx talis (Heath Bay)	12	2021						
Quatsino	Cleagh Creek	12	2021						
Quatsino	Koskimo	12	2021	2.17	FW treatment	4-Jul-21			28-Nov-21
Quatsino	Mahatta East	12	2021	11.9	FW treatment pending	4-Jul-21			
Quatsino	Mahatta West	12	2021	5.4	FW treatment	4-Jul-21			16-Dec-22
Quatsino	Monday Rocks	12	2021	22.07	FW treatment pending	4-Jul-21			
Quatsino	Thorpe Point	12	2021						