

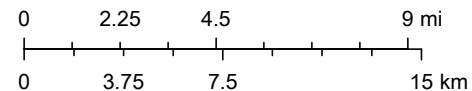
Monthly Sea Lice Monitoring November 2021 - Broughton



2021-12-10

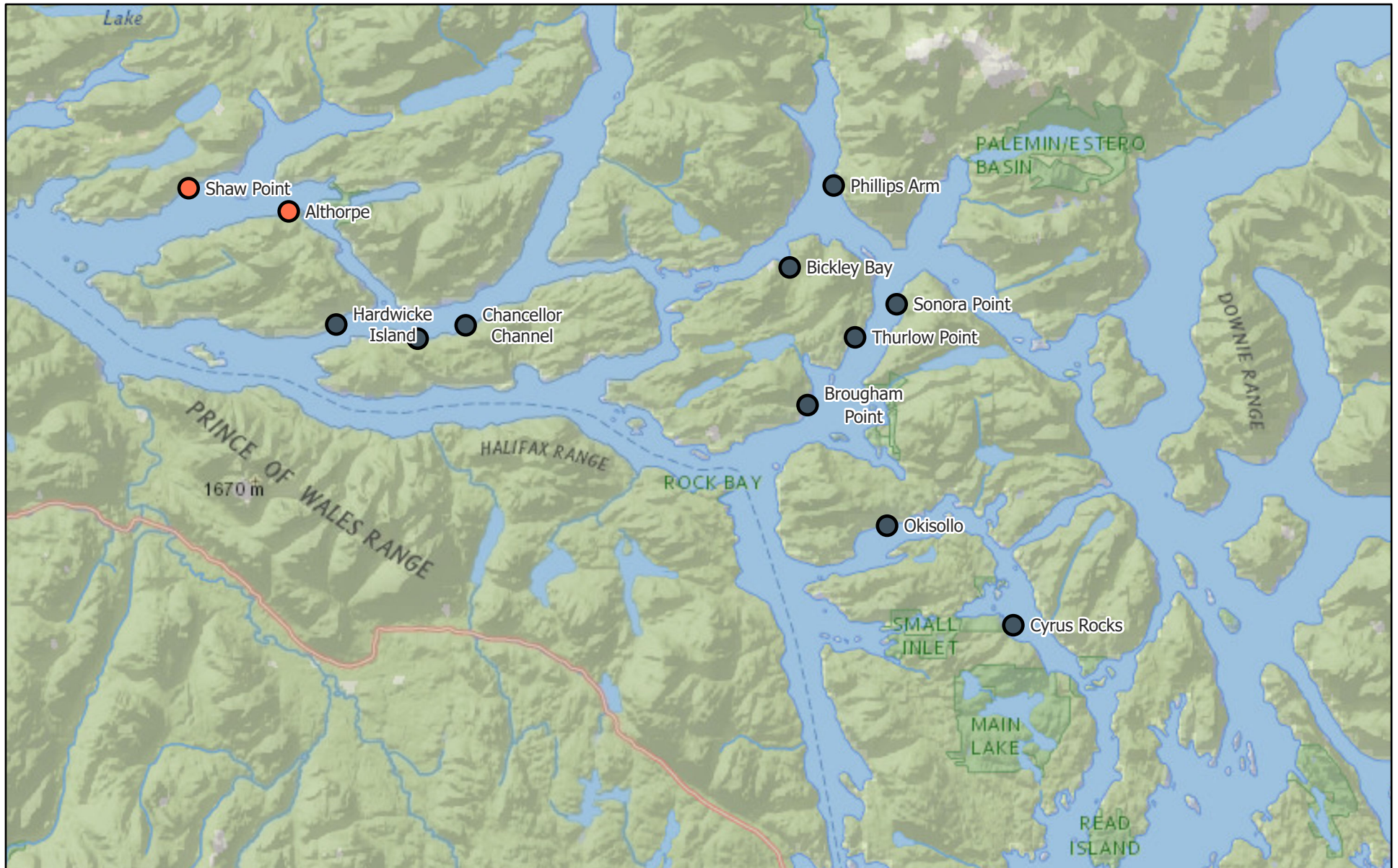
Monthly Sealice External ● Empty Mowi Sites
● ≤3.0 motile per fish

1:450,000



National Geographic, Esri, Garmin, HERE, UNEP-WCMC, USGS, NASA,

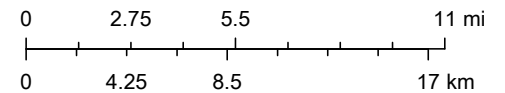
Monthly Sea Lice Monitoring November 2021 - Campbell River



2021-12-09

Monthly Sealice External ● Empty Mowi Sites
● >3.0 motile per fish

1:500,000



National Geographic, Esri, Garmin, HERE, UNEP-WCMC, USGS, NASA,

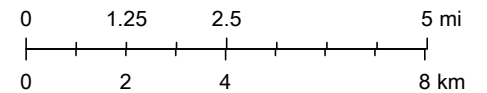
Monthly Sea Lice Monitoring November 2021 - Klemtu



2021-12-09

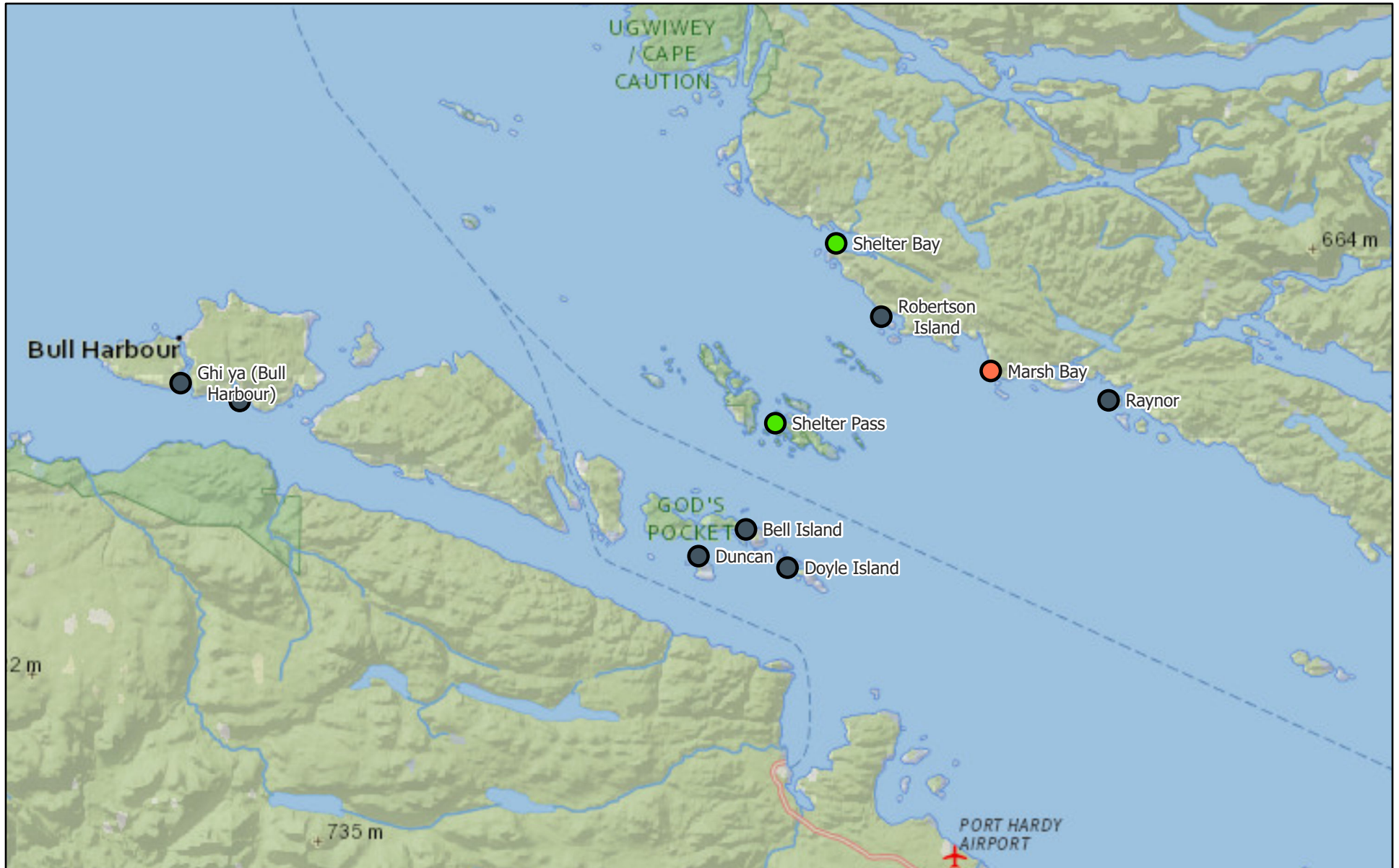
- Monthly Sealice External
- >3.0 motile per fish
 - ≤3.0 motile per fish
 - Empty Mowi Sites

1:250,000



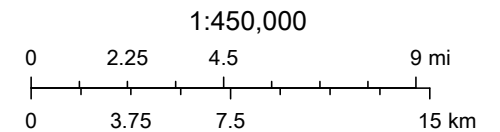
National Geographic, Esri, Garmin, HERE, UNEP-WCMC, USGS, NASA,

Monthly Sea Lice Monitoring November 2021 - Port Hardy



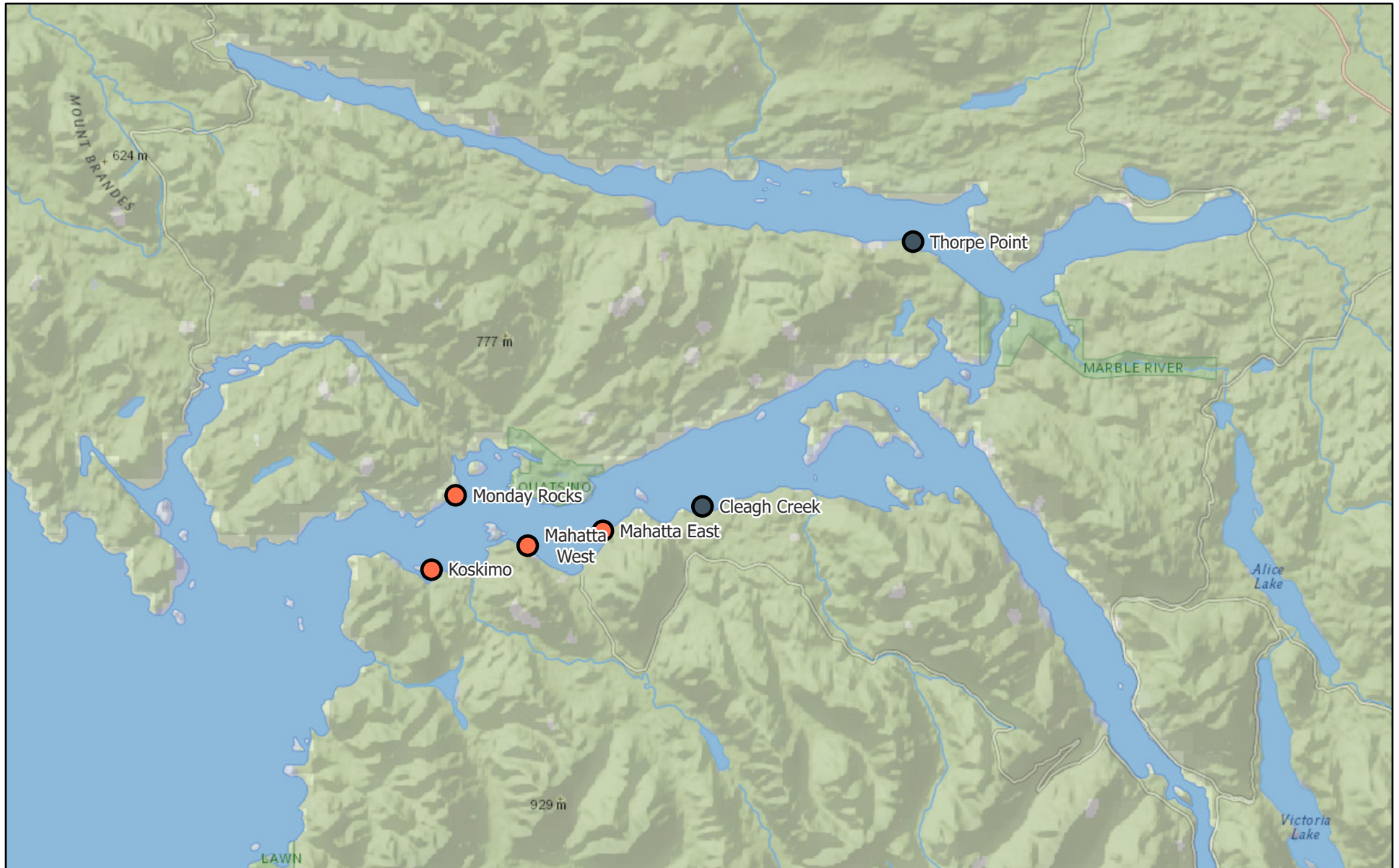
2021-12-10

- Monthly Sealice External
- ≤3.0 motile per fish
- >3.0 motile per fish
- Empty Mowi Sites



National Geographic, Esri, Garmin, HERE, UNEP-WCMC, USGS, NASA,

Monthly Sea Lice Monitoring November 2021 - Quatsino



2021-12-09

Monthly Sealice External

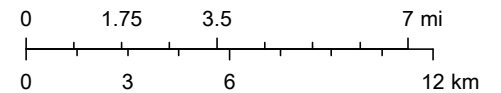


Empty Mowi Sites



>3.0 motile per fish

1:350,000



National Geographic, Esri, Garmin, HERE, UNEP-WCMC, USGS, NASA,

Area	Site	Month	Year	Avg Motile	Note	EMB Start	H202 Start	Hydrolicer Start	Freshwater Start
Broughton	Doctor Islet	11	2021		no counts this month due to harvesting. Fallow as of Nov 18, 2021	2-Feb-21		22-Mar-21	
Broughton	Humphrey Rocks	11	2021	1.2	hydrolicer treatment			13-Nov-21	
Broughton	Larsen Island	11	2021						
Broughton	Midsummer Island	11	2021	0.21		14-Oct-21		11-Aug-21	19-Oct-21
Broughton	Port Elizabeth	11	2021						
Broughton	Sargeant's Pass	11	2021	0.58					
Broughton	Swanson Island	11	2021	0.6		19-Oct-21		21-Sep-21	30-Oct-21
Broughton	Upper Retreat	11	2021						
Broughton	Wicklow Point	11	2021						
Campbell River	Althorpe	11	2021	5.26	harvesting in late December	14-Feb-21			22-Sep-21
Campbell River	Bickley Bay	11	2021						
Campbell River	Brougham Point	11	2021						
Campbell River	Chancellor Channel	11	2021						
Campbell River	Cyrus Rocks	11	2021						
Campbell River	Hardwicke Island	11	2021						
Campbell River	Lee's Bay	11	2021						
Campbell River	Phillips Arm	11	2021						
Campbell River	Shaw Point	11	2021	9.13	Hydrolicer delayed until mid December	5-Sep-19		26-Feb-20	30-Mar-21
Campbell River	Okisollo	11	2021						
Campbell River	Sonora Point	11	2021						
Campbell River	Thurlow Point	11	2021						
Klemtu	Alexander Inlet	11	2021		Smolt Entry starting Nov 16, 2021				
Klemtu	Cougar Bay	11	2021	5.56	treatment delayed until January		19-Aug-21		
Klemtu	Goat Cove	11	2021						
Klemtu	Kid Bay	11	2021	0.95		6-Jul-21	4-Jan-21	13-May-21	
Klemtu	Lime Point	11	2021	0					
Klemtu	Sheep Pass	11	2021	0.37	Harvesting and will be empty in early December	6-Jul-21	12-May-21		9-May-21
Port Hardy	Bell Island	11	2021						
Port Hardy	Doyle Island	11	2021						
Port Hardy	Duncan	11	2021		no counts due to harvesting. Fallow as of Nov 22, 2021	26-Mar-21	8-Apr-21		7-Jul-20
Port Hardy	Ghi ya (Bull Harbour)	11	2021		Smolt entry starting Nov 29, 2021				
Port Hardy	Marsh Bay	11	2021	6.49	Treatment pending	14-Oct-21	16-Jul-21		8-Sep-21
Port Hardy	Raynor	11	2021						
Port Hardy	Robertson Island	11	2021						
Port Hardy	Shelter Bay	11	2021	0.02					
Port Hardy	Shelter Pass	11	2021	2.05	FW treatment completed				29-Oct-21
Port Hardy	Wanx talis (Heath Bay)	11	2021						
Quatsino	Cleagh Creek	11	2021						
Quatsino	Koskimo	11	2021	3.06	FW treatment	4-Jul-21			28-Nov-21
Quatsino	Mahatta East	11	2021	5.82	FW treatment pending	4-Jul-21			
Quatsino	Mahatta West	11	2021	3.97	FW treatment pending	4-Jul-21			
Quatsino	Monday Rocks	11	2021	5.52	FW treatment pending	4-Jul-21			
Quatsino	Thorpe Point	11	2021						