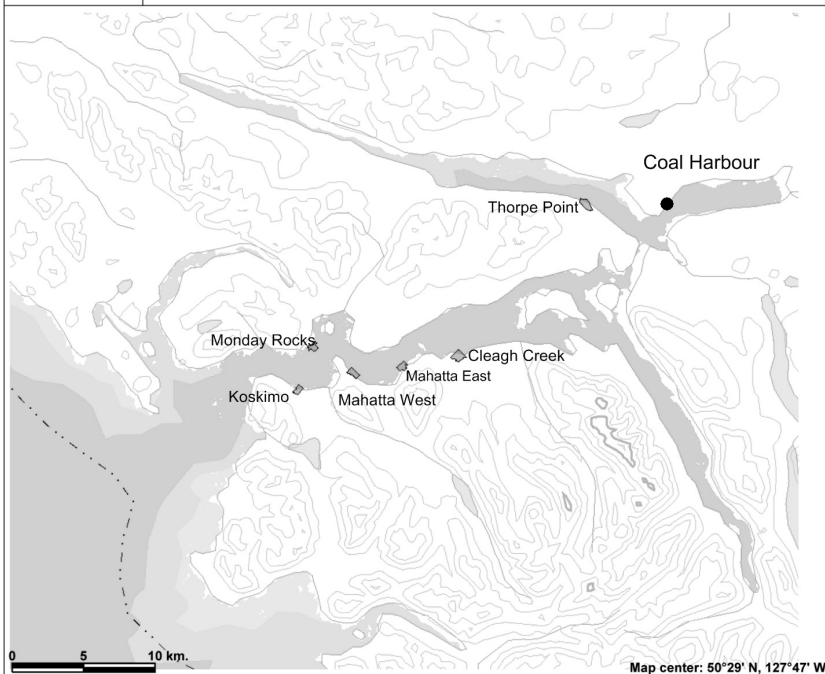


# MOWI Canada West Quatsino Sound Farm Sites



## Legend

■ Marine Finfish Aquaculture Farms

### Contours (1:250K)

— Contour - Index

— Contour - Intermediate

--- Area of Indefinite Contours

### Provincial Boundary (1:250K)

— Boundary (International)

--- Boundary (Interprovincial)

### Bathymetry (1:250k)

■ Shallow (0-20m)

■ Photoc (20-50m)

■ Mid-depth (50-200m)

■ Deep (200-1000m)

■ Abyssal (>1000m)



Scale: 1:289,722

This map is a user generated static output from an Internet mapping site and is for general reference only. Data layers that appear on this map may or may not be accurate, current, or otherwise reliable. THIS MAP IS NOT TO BE USED FOR NAVIGATION.



marineharvest

CLEAGH CREEK

Site Reference Number: 1378

# CONTAINMENT ARRAY MANAGEMENT PLAN

CURRENT AREA OF LEASE: 48.8 Ha

## Legend

Buildings	Water Features
Feed Shed	Shoreline
Compressor Float	0 Meter
	Bathymetry
	Depth (Meter)
	Streams
	Salmonid Streams
	Rock
	Boundaries
	Proposed Lease Boundary
	Current Lease Boundary
	Intensive Use Area
	Environmental Sensitive Areas
	Current Meter Location
	Primary Current Direction
	Secondary Current Direction
	Cage Array Coordinates:
	SW 50°28.881' - 127°44.113'
	NW 50°28.975' - 127°43.955'
	SE 50°28.858' - 127°44.078'
	NE 50°28.954' - 127°43.981'

THIS MAP HAS THE GRID  
USE THE BATHYMETRIC CHART FOR THE  
EXACT MAGNETIC DECLINATION

All Latitude and Longitude are Degree-Dcimal Minutes  
Anchor positions are approximate

Reference Map: DEL  
Base Map: DEL042  
Chart: 5678

UTM NAD83  
Zone 8

Date: March 4, 2011 Revised Date:

SCALE 1:5000

50 0 50 100 150 200  
Meters



Prepared by: Summit Mapping Services  
darrin@summit.net

QUATSINO SOUND

Currents  
@15m depth

240° 80°

1403746

67.0

VANCOUVER ISLAND

PROFESSIONAL  
MAP  
J. G. King  
March 4, 2011

POC:  
50°28.881'  
127°43.508'  
5904.36  
5592940



marineharvest

# KOSKIMO BAY

Site Reference Number: 144

## CONTAINMENT ARRAY MANAGEMENT PLAN

CURRENT AREA OF LEASE: 25.7 Ha

PROPOSED AREA OF LEASE: 39.9 Ha

### Legend

<b>Buildings</b>	<b>Water Features</b>
Feedhead	Shoreline
Mort Float	0 Meter
Compressor	Bathymetry
Pistol	Depth (Meter)
<b>Farm Features</b>	Streams
Moorline	Rock
Moorline Block	Boundaries
Single 1000kg	Proposed Lease Boundary
Moorline Block	Current Lease Boundary
Double	Intensive Use Area
Moorline Block	<b>Environmental Features</b>
Triple	Current Water Location
Flow Anchor	Primary Current Direction
700kg	Secondary Current Direction
Plow Anchor	Proposed Pesticide Drift
1000kg	
1/4" Single	
Shore Pin	
Non Operational	
Pen	
50m square	
Operational Pen	
50m square	

Cage Array	SW 50° 27.451' - 127° 53.488'
Coordinates:	NW 50° 27.582' - 127° 53.353'
	SE 50° 27.442' - 127° 53.442'
	NE 50° 27.583' - 127° 53.328'

THIS MAP HAS THE UTM GRID  
USE THE BATHYMETRIC CHART FOR THE  
EXACT MAGNETIC DECLINATION  
All Latitude and Longitude are Degree-Decimal Minutes  
Anchor positions are approximate

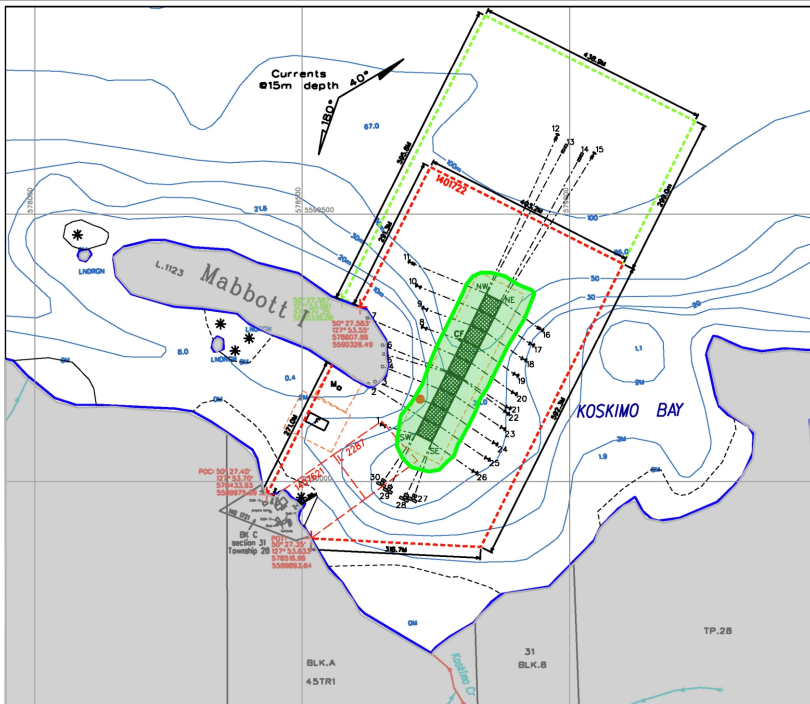
Reference Map: DEL  
Base Map: DEL 041  
Bathymetry Base Chart: 0070

Date: March 4, 2011 Revised Date:

SCALE 1:5000

50 0 50 100 150 200  
Meters

Prepared by: Summit Mapping Services  
dsmith@summit.net



*MAHATTA*  
30 JULY 2012



marineharvest

MAHATTA EAST

Site Reference Number: 1338

# CONTAINMENT ARRAY MANAGEMENT PLAN

CURRENT AREA OF LEASE: 31.6Ha

## Legend

<b>Buildings</b>	<b>Water Features</b>
Feedshed	Shoreline
Mort Float	0 Meter
House	Bathymetry
Compressor/ Utility Float	Depth (Meter)
	Streams
	Rock
<b>Farm Features</b>	<b>Boundaries</b>
Moorline Line	Current Lease Boundary
Moorline Block Single 2000 Kg	Intensive Use Area
Moorline Block Single 2500 Kg	
Pile Anchor 700Kg	<b>Environmental Features</b>
Pile Anchor 1000Kg	Current Meter Location
	Unknown
	Primary Current Direction
Single Shore Pin	Secondary Current Direction
Double Shore Pin	
Non Operational Pen 30m square	Proposed Pesticide Drift
Operational Pen 30m square	

Cage Array Coordinates:	SW 50° 28.438' - 127° 47.282'
	NW 50° 28.462' - 127° 47.325'
	SE 50° 28.485' - 127° 47.187'
	NE 50° 28.517' - 127° 47.216'

THIS MAP HAS THE UTM GRID  
USE THE BATHYMETRIC CHART FOR THE  
EXACT MAGNETIC DECLINATION

All Latitude and Longitude are Degree-Decimal Minutes  
Anchor positions are approximate

Reference Map: SGL	UTM Meters
Base Map: SGL-041	Zone 9
Bathymetry Base Chart: 0679	

Date: July 30, 2012 Revised Date:

SCALE 1:5000  
50 0 50 100 150 200  
Meters

Prepared by: Summit Mapping Services  
drc@summitmapping.com

QUAT SINO SOUND

Currents  
@15m depth 40°



T O 599  
BR.4



marineharvest

MAHATTA WEST

Site Reference Number: 1238

# CONTAINMENT ARRAY MANAGEMENT PLAN

CURRENT AREA OF LEASE: 30.2Ha

PROPOSED AREA OF LEASE: 49.3Ha

## Legend

Buildings	Water Features
Feedshed F	Shoreline
Mort Float M	0 Meter
House H	Bathymetry -30
Compressor Float CF	Depth (Meter) 1.7
Fuel Float FF	Streams
Farm Features	Rock
Mooring Line	Boundaries
Mooring Block Single	Proposed Lease Boundary
Plow Anchor	Current Lease Boundary
Shore Pin	Intensive Use Area
Non Operational Pen	Environmental Features
30m square	Current Meter Location
Operational Pen	Primary Current Direction
30m square	Secondary Current Direction
Proposed Pesticide Drift	

Cage Array Coordinates:	SW 50°28.172' - 127°50.250'
	NW 50°28.191' - 127°50.240'
	SE 50°28.080' - 127°50.098'
	WE 50°28.108' - 127°49.994'

THIS MAP HAS THE UTM GRID  
USE THE BATHYMETRIC CHART FOR THE  
EXACT MAGNETIC DECLINATION  
All Latitude and Longitude are Degree-Decimal Minutes  
Anchor positions are approximate

Reference Map: 02L	UTM MADS
Base Map: 02L041	Zone 9
Bathymetry Base Chart: 3679	

Date: March 6, 2011 Revised Date:

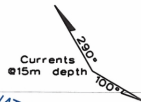
SCALE 1:5000

50 0 50 100 150 200

Meters

Prepared by: Summit Mapping Services

darrah@summit.net



QUATSINO SOUND

Koskimo Islands

VANCOUVER ISLAND





marineharvest

## MONDAY ROCKS

Site Reference Number: 1237

## CONTAINMENT ARRAY MANAGEMENT PLAN

CURRENT AREA OF LEASE: 25.7Ha

### Legend

Farm Features	Water Features
Mooring Line	Shoreline
Mooring Block	0 Meter
Single	Bathymetry
Pile Anchor	Depth (Meter)
Shore Pin	Streams
Non Operational Pen	Rock
30m square	Boundaries
Operational Pen	Proposed Lease
30m square	Boundary
Buildings	Current Lease
House	Boundary
40' X 60'	Intensive Use Area
Mort Float	Environmental Features
20' X 20'	Current Meter Location
Feed Shed	Primary Current Direction
20' X 30'	2001
Compressor Shed	Secondary Current Direction
40' X 80'	2001
Proposed Pesticide Drift	

Cage Array Coordinates:	SW	50°29.108' - 127°52.638'
	NW	50°29.214' - 127°52.484'
	SE	50°29.092' - 127°52.614'
	NE	50°29.200' - 127°52.480'

THIS MAP HAS THE UTM GRID  
USE THE BATHYMETRIC CHART FOR THE  
EXACT MAGNETIC DECLINATION  
All Latitude and Longitude are Degree-Decimal Minutes  
Anchor positions are approximate

Reference Map: 92L  
Base Map: 92L-041  
Bathymetry: Base Chart: 9279

Date: March 4, 2011

Revised Date:



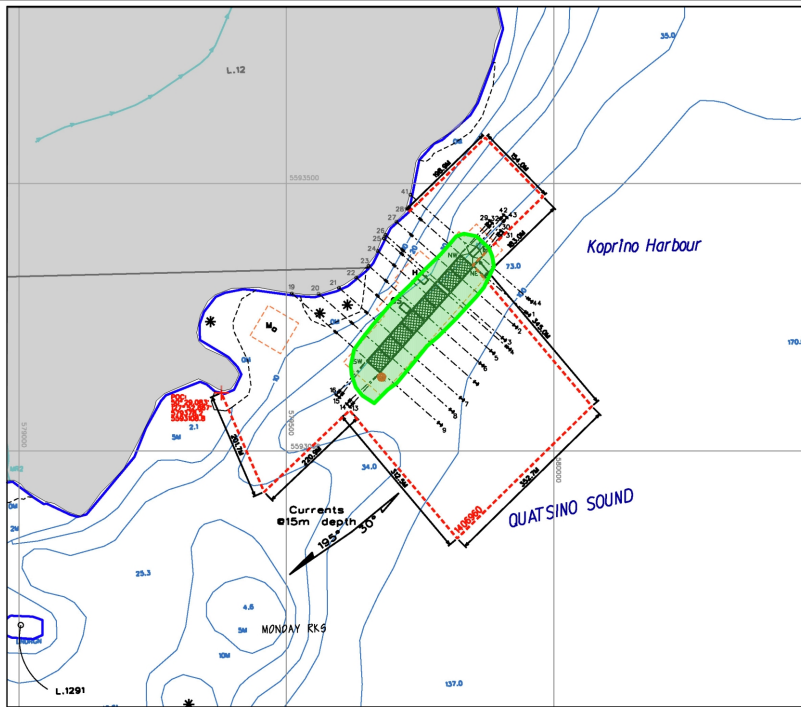
SCALE 1:5000

0 50 100 150 200

Meters

Prepared by: Summit Mapping Services

darrah@summit.net





marineharvest

## Thorpe Point

Site Reference Number: 1299

### CONTAINMENT ARRAY MANAGEMENT PLAN

CURRENT AREA OF LEASE: 44.6 Ha

#### Legend

Farm Features	Water Features
Mooring Line	Shoreline
Mooring Block	0 Meter
Single	Bathymetry
Plow Anchor	Depth (Meter)
Shore Pin	Streams
Operational Pen	Salmonid Streams
70m circle	Rock
Non Operational Pen	Boundaries
70m circle	Proposed Lease Boundary
Proposed Pesticide Drift	Current Lease Boundary
	Intensive Use Area

Cage Array Coordinates:	SW 50°34.783' - 127°36.771'
	NW 50°34.835' - 127°36.748'
	SE 50°34.739' - 127°36.528'
	NE 50°34.791' - 127°36.503'

THIS MAP HAS THE UTM GRID  
USE THE BATHYMETRIC CHART FOR THE  
EXACT MAGNETIC DECLINATION  
All Latitude and Longitude are Degree-Decimal Minutes  
Anchor positions are approximate

Reference Map: 90L	UTM MADS
Base Map: DEL-052	ZONED
Bathymetry Base Chart: 3679	

Date: Feb. 8, 2011	Revised Date:
SCALE 1:5000	
Meters	
0 50 100 150 200	
Prepared by:	Summit Mapping Services
	doroch@slr.net

