



Image © 2015 DigitalGlobe

Data SIO, NOAA, U.S. Navy, NGA, GEBCO
© 2015 Cnes/Spot Image

Google earth



marineharvest

BELL ISLAND

Site Reference Number: 892

CONTAINMENT ARRAY MANAGEMENT PLAN

CURRENT AREA OF LEASE: 15.8Ha

Legend

Buildings	Water Features
Feed Shed 98' X 32.8' 30mX10m	Shoreline
House	0 Meter
Mort Float	Bathymetry
	Depth (Meter)
	Streams
	Salmonid Streams
	Rock
	Boundaries
	Current Lease Boundary
	Park Boundary
	Other Lease Boundary
	Intensive Use Area
	Environmental Features
	Current Meter Location
	Primary Current Direction 2008
	Secondary Current Direction 2008
	Management Plan location Coordinates:
	SW 50° 49.907' - 127° 31.263'
	NW 50° 49.986' - 127° 31.253'
	SE 50° 49.903' - 127° 31.217'
	NE 50° 49.985' - 127° 31.205'

THIS MAP HAS THE UTM GRID
USE THE BATHYMETRIC CHART FOR THE EXACT MAGNETIC DECLINATION
All Latitude and Longitude are Degree-Decimal Minutes
Plow anchor and mooring block locations based on as-built information (March 2010)

Reference Map: 92L UTM NAD83
Base Map: 92L083 Zone 9
Bathymetry Base Chart: 3549

Date: May 18, 2011 Revised Date:

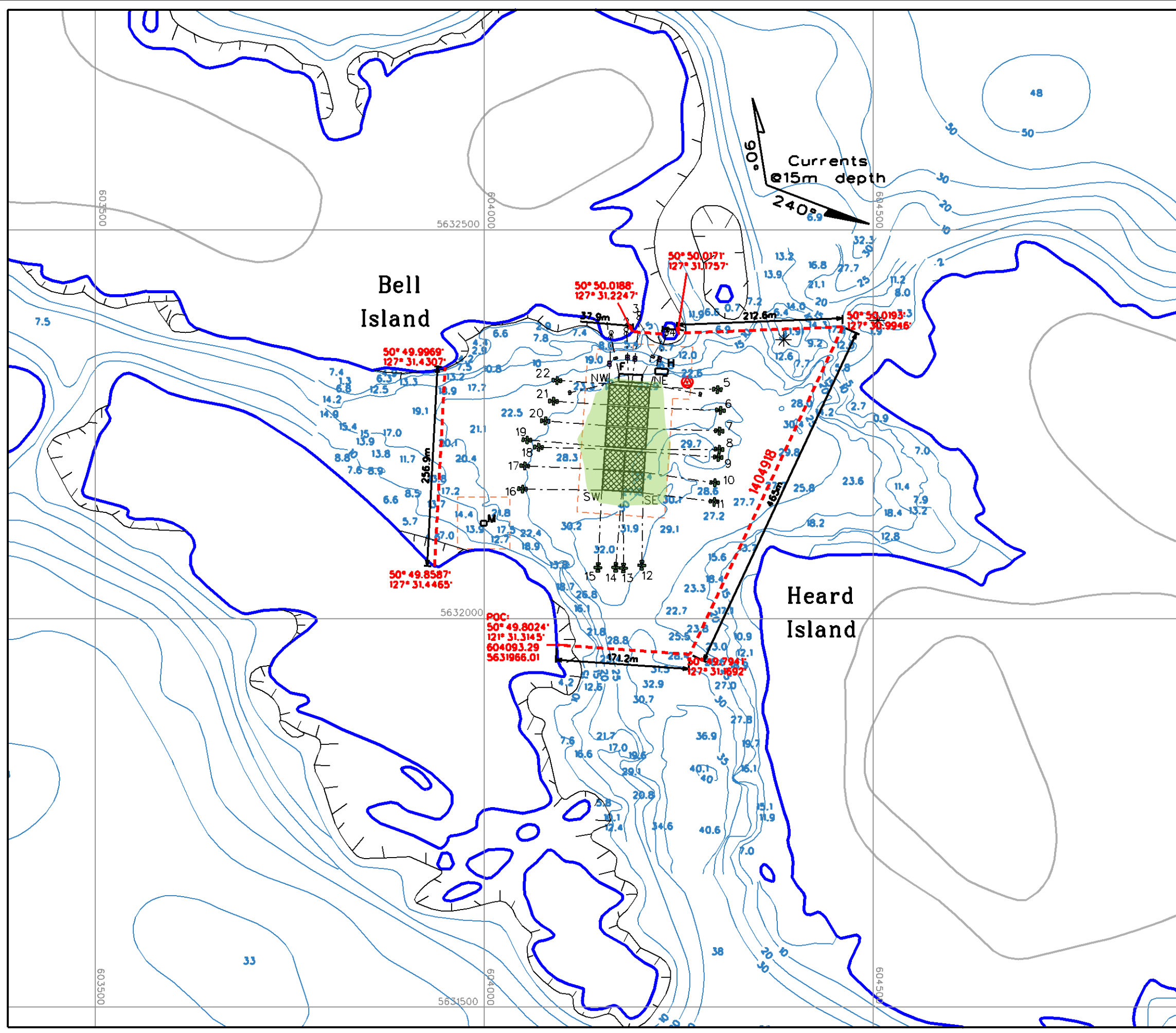
SCALE 1:5000

50 0 50 100 150 200

Meters

Prepared by: Sommet Mapping Services

desroch@telus.net





marineharvest

DOYLE ISLAND

Site Reference Number: 1288

CONTAINMENT ARRAY MANAGEMENT PLAN

CURRENT AREA OF LEASE: 46.6Ha

Legend

Buildings		Water Features	
House/ Feed Shed	H/F	Shoreline	
Mort Float	M	0 Meter	
Farm Features		Bathymetry	
Mooring Line	---	Depth (Meter)	1.7
Mooring Block Single 1000kg		Streams	
Mooring Block Single 5000kg		Salmonid Streams	
Tripod Rockpin		Rock	
1 1/2" Shore Pin		Boundaries	
Plow Anchor 1000kg		Current Lease Boundary	
Operational Pen 120m Circle		Park Boundary	
Non Operational Pen 120m Circle		Other Lease Boundary	
Proposed Drift Area		Intensive Use Area	
		Environmental Features	
		Current Meter Location	
		Primary Current Direction 2008	
		Secondary Current Direction 2008	
Cage Array Coordinates:		SW	50° 48.869' - 127° 29.414'
		NW	50° 48.911' - 127° 29.404'
		SE	50° 48.830' - 127° 29.003'
		NE	50° 48.875' - 127° 28.984'

THIS MAP HAS THE UTM GRID
USE THE BATHYMETRIC CHART FOR THE
EXACT MAGNETIC DECLINATION
All Latitude and Longitude are Degree-Decimal Minutes
All mooring scopes are at least 1:3"
Approximate anchor locations

Reference Map: 92L UTM MADS
Base Map: 92L083 Zone 9
Bathymetry Base Chart: 3549

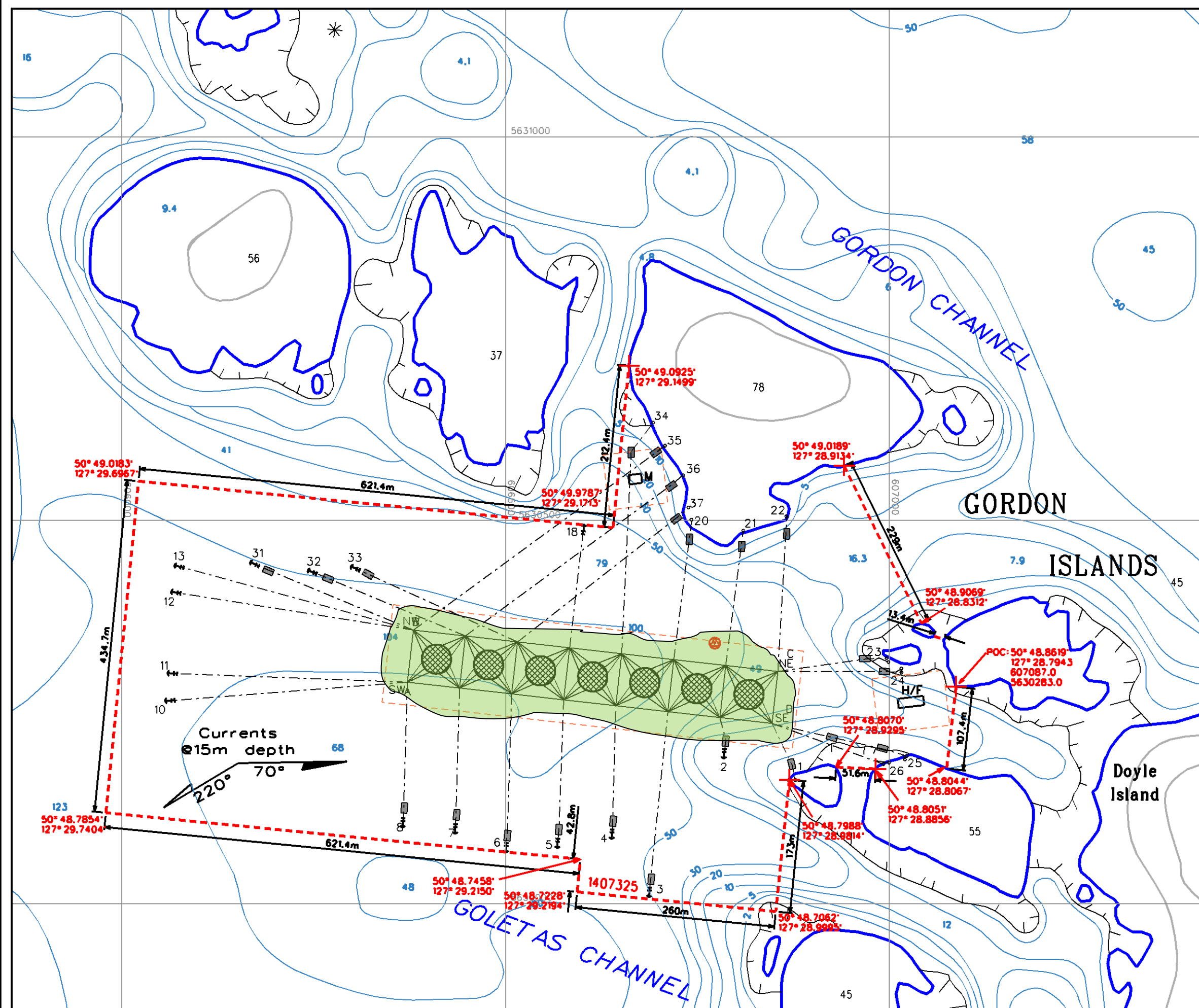
Date: May 17, 2011

Revised Date:

SCALE 1:5000

50 0 50 100 150 200
Meters

Prepared by: Sommet Mapping Services
desroch@telus.net





marineharvest

DUNCAN ISLAND

Site Reference Number: 1293

CONTAINMENT ARRAY MANAGEMENT PLAN

CURRENT AREA OF LEASE: 37.4Ha

Legend

Buildings		Water Features	
Mort Float	□ M	Shoreline	
Farm Features		0 Meter	
Mooring Line	---	Bathymetry	
Mooring Block	■	Depth (Meter)	
Shore Pin	○	Streams	
Operational Pen 25m square		Salmonid Streams	
Non Operational Pen 25m square		Rock	
Proposed Drift Area		Boundaries	
		Current Lease Boundary	
		Park Boundary	
		Other Lease Boundary	
		Intensive Use Area	
Environmental Features			
		Current Meter Location	
		Primary Current Direction 2008	
		Secondary Current Direction 2008	

Cage Array Coordinates:	SW	50° 49.102' - 127° 33.373'
	NW	50° 49.240' - 127° 33.357'
	SE	50° 49.100' - 127° 33.325'
	NE	50° 49.238' - 127° 33.309'

THIS MAP HAS THE UTM GRID
USE THE BATHYMETRIC CHART FOR THE EXACT MAGNETIC DECLINATION
All Latitude and Longitude are Degree-Decimal Minutes
Approximate anchor locations

Reference Map: 92L	UTM NAD83
Base Map: 92L083	Zone 9
Bathymetry Base Chart: 3549	

Date: April 21, 2011

Revised Date:

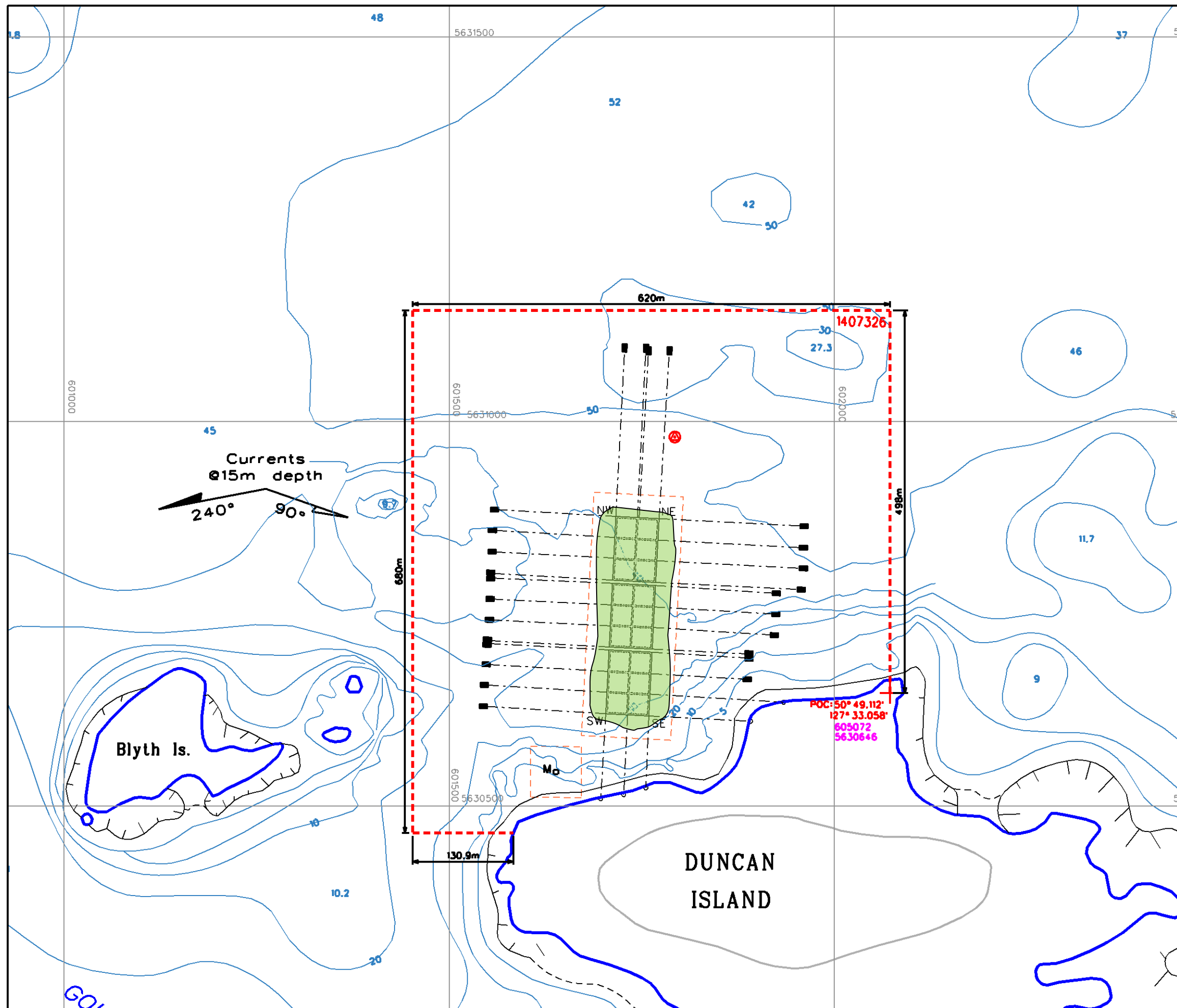
SCALE 1:5000

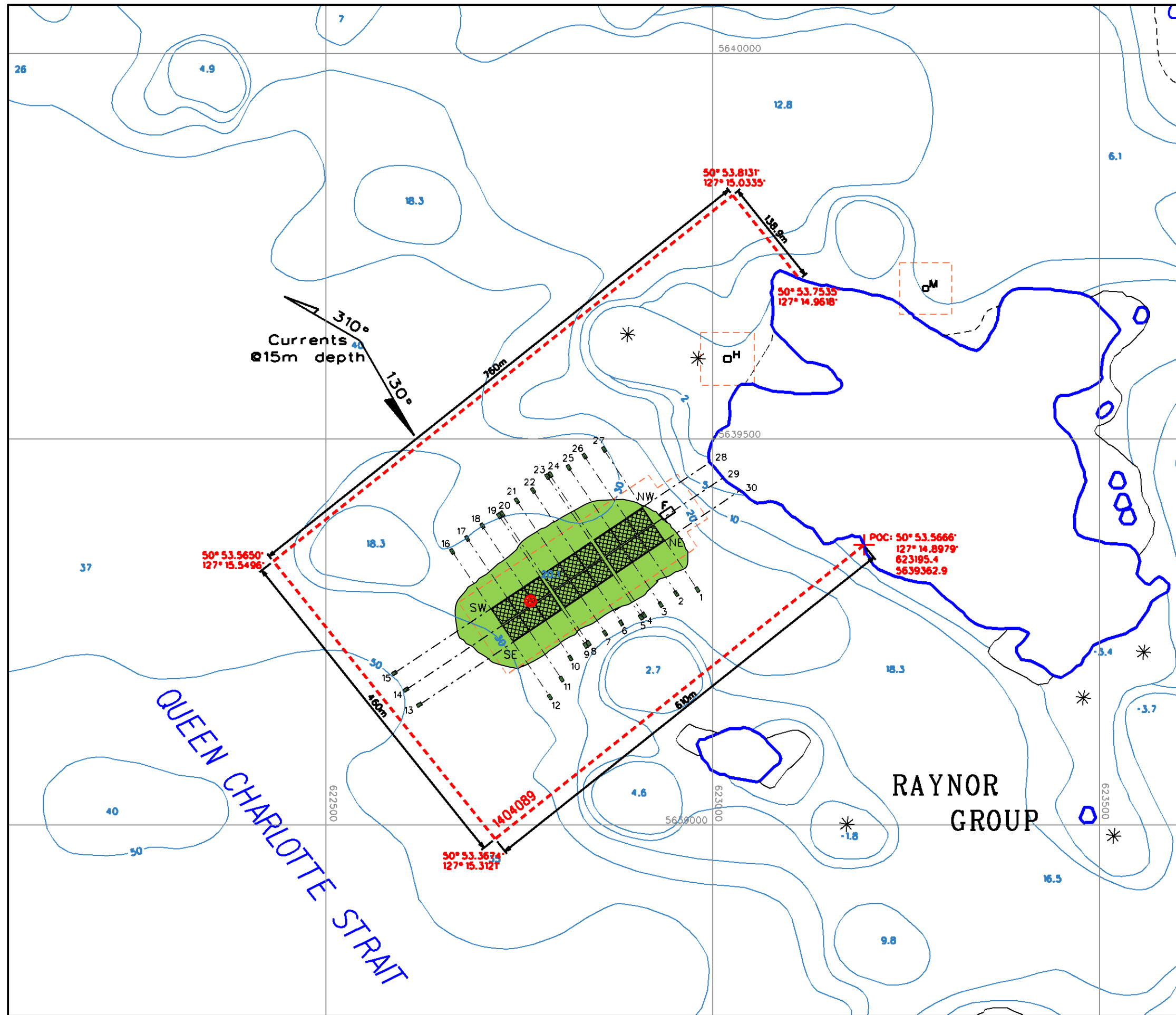
50 0 50 100 150 200

Meters

Prepared by: Sommet Mapping Services

desroch@telus.net





marineharvest

RAYNOR

Site Reference Number: 1198

CONTAINMENT ARRAY MANAGEMENT PLAN

CURRENT AREA OF LEASE: 29.6Ha

Legend

Buildings		Water Features	
House		Shoreline	
Feed Barge		0 Meter	
Mort Float		Bathymetry	
Farm Features		Depth (Meter)	
Mooring Line		Streams	
Mooring Block		Salmonid Streams	
Single 2000kg		Rock	
1 1/4" Double Shore Pin		Boundaries	
Fish Cage		Current Lease Boundary	
24m square		Park Boundary	
Non Operational Pen		Other Lease Boundary	
24m square		Intensive Use Area	
Proposed Drift area		Environmental Features	
		Current Meter Location	
		Primary Current Direction 2003	
		Secondary Current Direction 2003	

Management Plan	SW	50° 53.529' - 127° 15.316'
location Coordinates:	NW	50° 53.600' - 127° 15.137'
	SE	50° 53.503' - 127° 15.295'
	NE	50° 53.575' - 127° 15.114'

THIS MAP HAS THE UTM GRID
USE THE BATHYMETRIC CHART FOR THE EXACT MAGNETIC DECLINATION
All Latitude and Longitude are Degree-Decimal Minutes
Plow anchor and mooring block locations based on as-built information July 2010

Reference Map: 92L
Base Map: 92L084
Bathymetry Base Chart: 3548

UTM NAD83
Zone 9

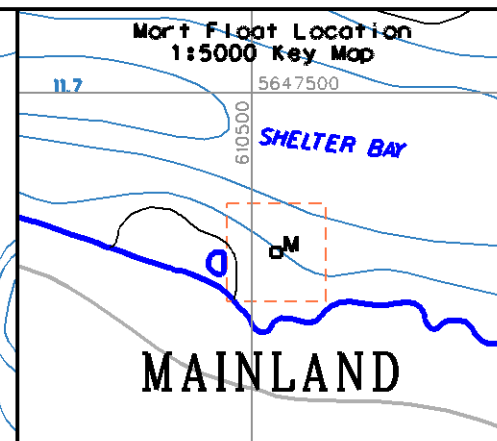
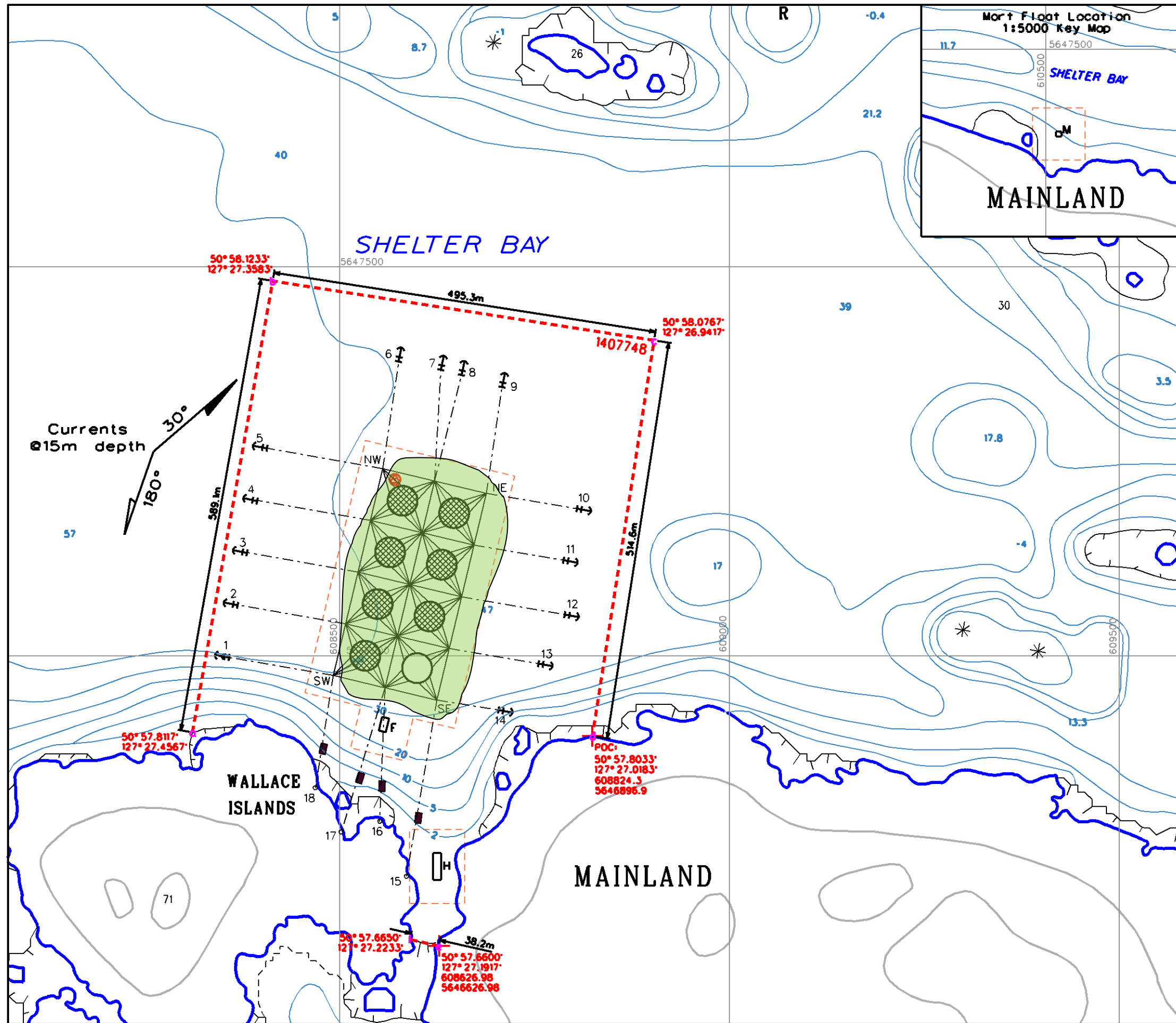
Date: May 12, 2011

Revised Date:



SCALE 1:5000
50 0 50 100 150 200
Meters

Prepared by: Summit Mapping Services
desroch@telus.net



marineharvest

SHELTER BAY


















Site Reference Number: 1350

CONTAINMENT ARRAY

MANAGEMENT PLAN

CURRENT AREA OF LEASE: 31.7Ha

Legend


Buildings	Water Features
House 	Shoreline 
Feed Shed 30' X 60' 	0 Meter 
Mort Float 	Bathymetry 
	Depth (Meter) 
	Streams 
	Salmonid Streams 
	Rock 
	Boundaries
	Current Lease Boundary 
	Park Boundary 
	Other Lease Boundary 
	Intensive Use Area 
	Environmental Features
	Current Meter Location 
	Primary Current Direction 2008 
	Secondary Current Direction 2008 

Cage Array Coordinates:	SW 50° 57.849' - 127° 27.299'
	NW 50° 58.000' - 127° 27.240'
	SE 50° 57.827' - 127° 27.192'
	NE 50° 57.981' - 127° 27.123'

THIS MAP HAS THE UTM GRID
USE THE BATHYMETRIC CHART FOR THE EXACT MAGNETIC DECLINATION
All Latitude and Longitude are Degree-Decimal Minutes
Plow anchor and mooring block locations based on as-built information April 2010

Reference Map: 92L	UTM NAD83
Base Map: 92L093	Zone 9
Bathymetry Base Chart: 3548	


Date: May 16, 2011 Revised Date:



SCALE 1:5000

50 0 50 100 150 200

Meters

Prepared by:  Sommet Mapping Services

desroch@telus.net



marineharvest




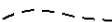

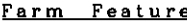
















SHELTER PASSAGE

Site Reference Number: 831

CONTAINMENT ARRAY MANAGEMENT PLAN

CURRENT AREA OF LEASE: 29.3Ha

Legend

Buildings	Water Features
Mort Float 	Shoreline 
House Float 	0 Meter 
Farm Features	Bathymetry 
Mooring Line 	Depth (Meter) 1.7 
Mooring Block 	Streams 
Shore Pin 	Salmonid Streams 
Operational Pen 24m square 	Rock 
Non Operational Pen 24m square 	Boundaries
Proposed Drift Area 	Current Lease Boundary 
	Park Boundary 
	Other Lease Boundary 
	Intensive Use Area 
	Environmental Features
	Current Meter Location 
	Primary Current Direction 2001 
	Secondary Current Direction 2001 

Cage Array Coordinates:	SW 50° 52.934' - 127° 29.948'
	NW 50° 52.983' - 127° 29.944'
	SE 50° 52.920' - 127° 29.848'
	NE 50° 52.949' - 127° 29.845'

THIS MAP HAS THE UTM GRID
USE THE BATHYMETRIC CHART FOR THE
EXACT MAGNETIC DECLINATION
All Latitude and Longitude are Degree-Decimal Minutes
Approximate anchor locations

Reference Map: 92L
Base Map: 92L083
Bathymetry Base Chart: 3649

UTM NAD83
Zone 9

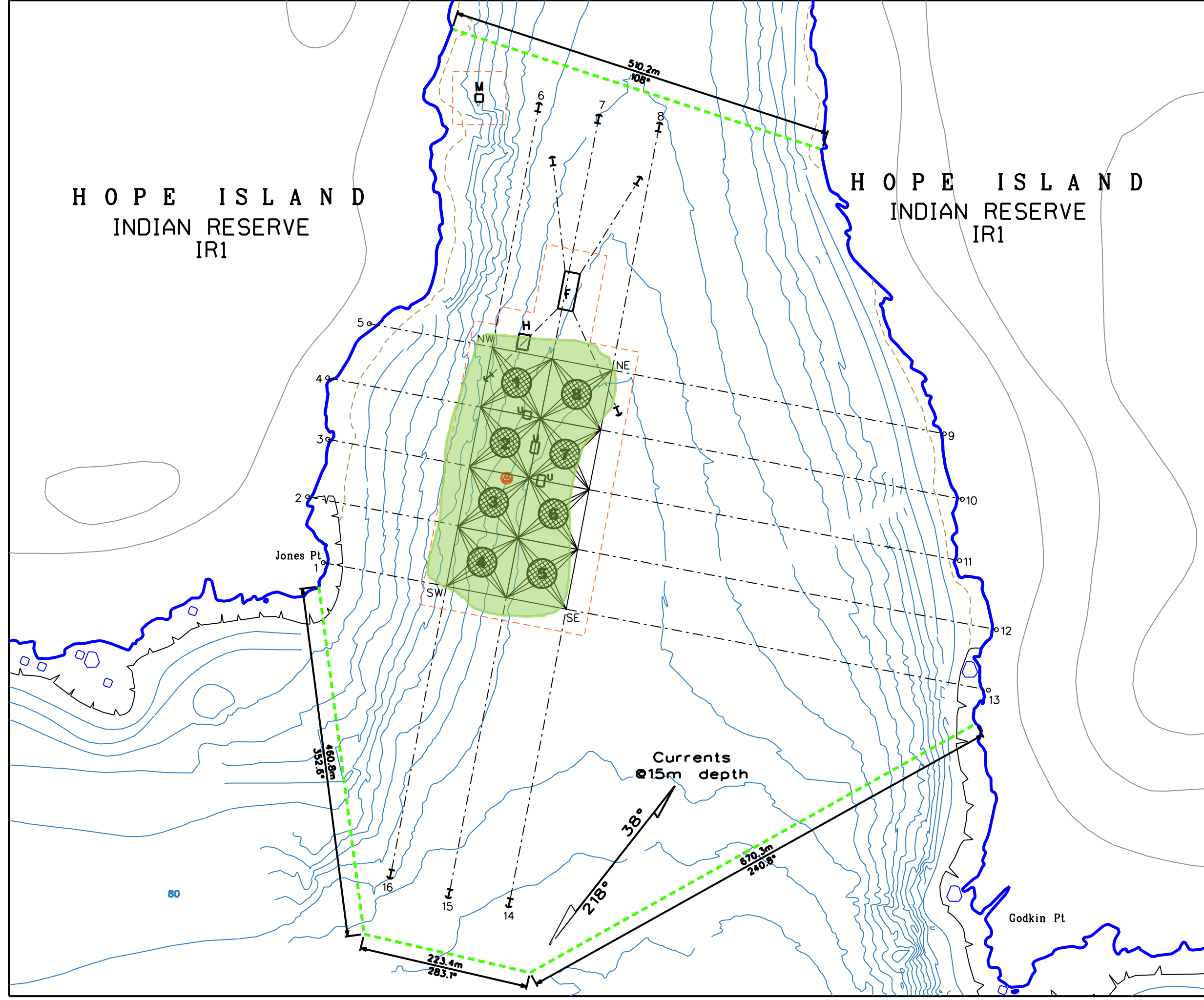
Date: May 11, 2011

Revised Date:



SCALE 1:5000
50 0 50 100 150 200
Meters

Prepared by:  Sommet Mapping Services
desroch@telus.net



Ghi ya (Bull Harbour)

Site Reference Number: 7053.

TOP VIEW OPERATIONAL DIAGRAM CURRENT AREA OF LEASE: 76.6Ha

Legend	
Farm Features	Water Features
Mooring Line	Shoreline
Shore Pin	0 Meter
Plow Anchor	Bathymetry
Operational Pen 120m Circle	Depth (Meter)
Non Operational Pen 120m Circle	Streams
	Salmonid Streams
	Rock
Floats/Barges	Boundaries
Utility	Proposed Lease Boundary
Feed barge	Intensive Use Area
House	Environmental Features
Mort	Current Meter Location
Proposed Drift Area	Primary Current Direction 2008
	Secondary Current Direction 2008

Cage Array Coordinates:	SW	50° 53.994' - 127° 56.393'
	NW	50° 54.163' - 127° 56.338'
	SE	50° 53.976' - 127° 56.260'
	NE	50° 54.145' - 127° 56.204'

THIS MAP HAS THE UTM GRID
USE THE BATHMETRIC CHART FOR THE EXACT MAGNETIC DECLINATION
All Latitude and Longitude are Degree-Decimal Minutes
Approximate anchor locations

Reference Map: 92L	UTM NAD83
Base Map: 92L001-92L001	Zone 9
Bathymetry Base Chart: 3549	

Date: Dec. 13, 2013

SCALE 1:5000

50 0 50 100 150 200

Meters

Sommet Mapping Services

Prepared by: desroch@telus.net



Robertson Island

(Main Lease)
Site Reference
Number: 1382

TOP VIEW OPERATIONAL DIAGRAM

CURRENT AREA OF LEASE: 35.0Ha
PROPOSED AREA OF LEASE: 149.2Ha

Legend

Farm Features

Mooring Line

Mooring Block

Plow Anchor

Shore Pin

Operational Pen

Non Operational Pen

Utility

Utility

Feed barge

House

Mort

Proposed Drift Area

Water Features

Shoreline

0 Meter

Bathymetry

Depth (Meter)

Streams

Salmonid Streams

Rock

Boundaries

Current Lease Boundary

Proposed Lease Boundary

Intensive Use Area

Environmental Features

Current Meter Location

Primary Current Direction 2014

Secondary Current Direction 2014

Management Plan location Coordinates:

SW	50° 55.871'	127° 25.771'
NW	50° 55.957'	127° 25.753'
SE	50° 55.848'	127° 25.501'
NE	50° 55.934'	127° 25.482'

THIS MAP HAS THE UTM GRID

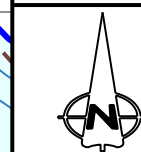
USE THE BATHYMETRIC CHART FOR THE EXACT MAGNETIC DECLINATION

All Latitude and Longitude are Degree-Decimal Minutes
Approximate anchor locations

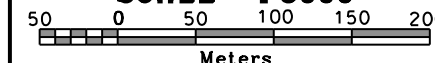
Reference Map: 92L
Base Map 92L003
Bathymetry Base Chart: 3548

UTM NAD83
Zone 9

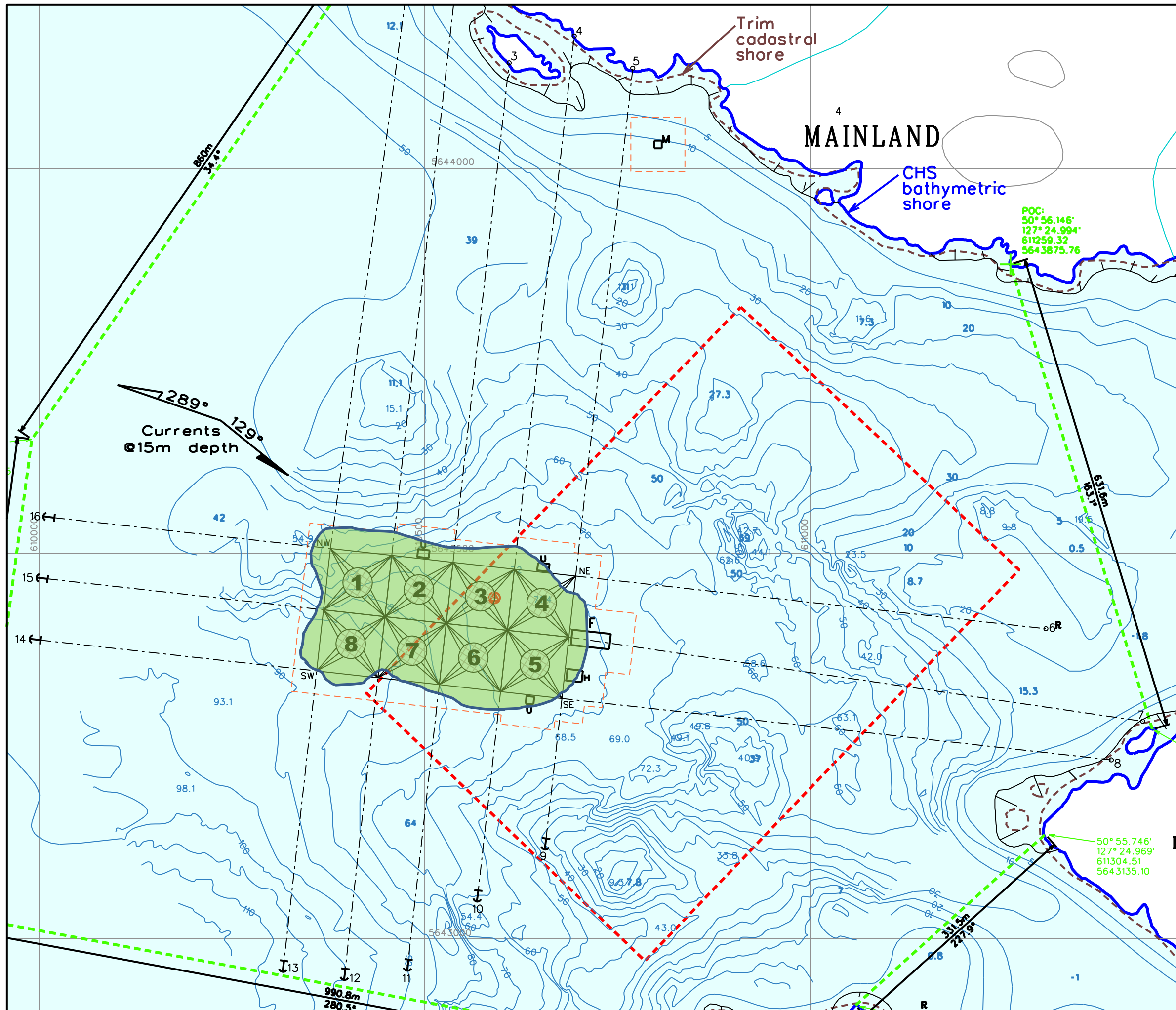
Date: June 6, 2014

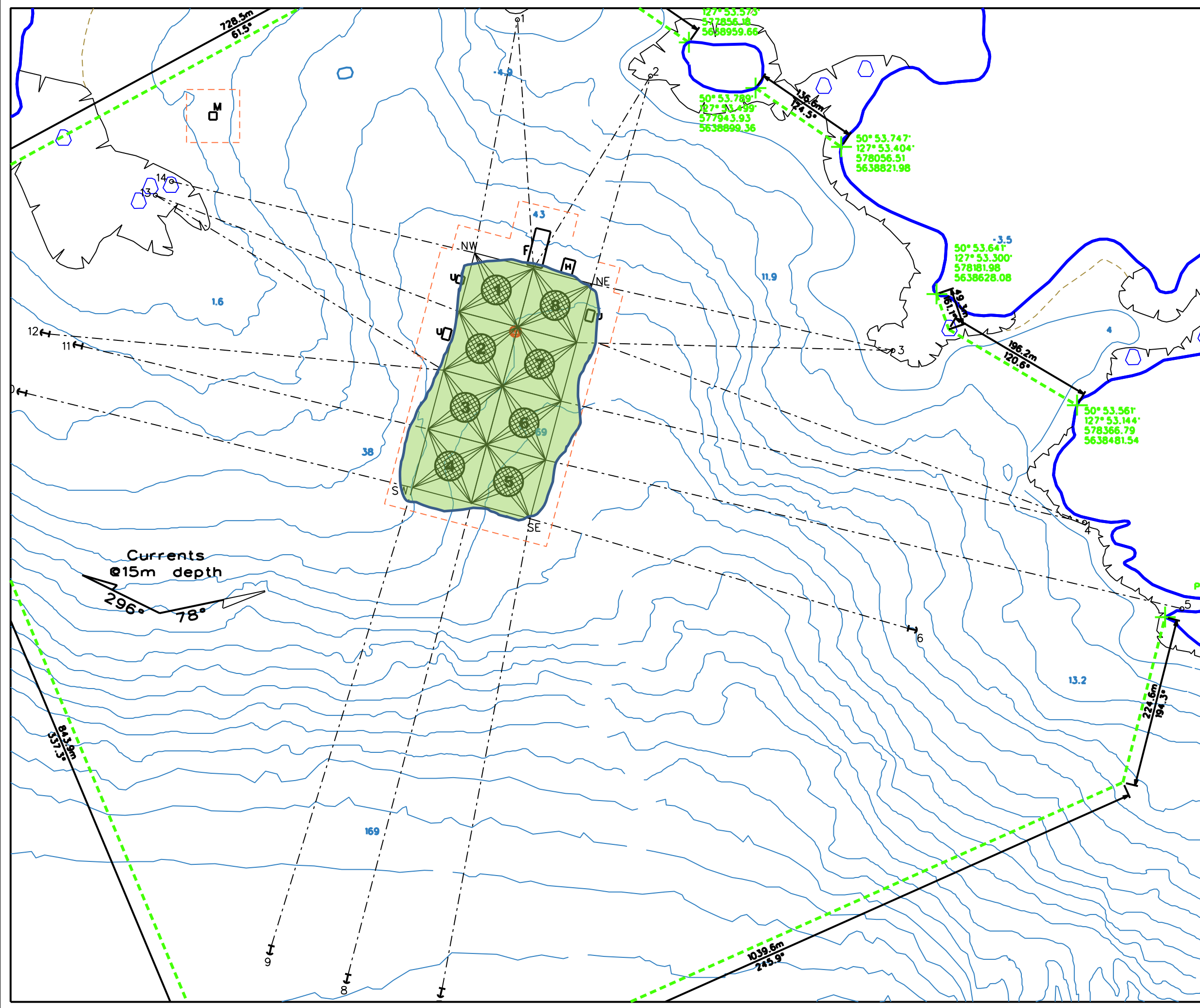


SCALE 1:5000



Prepared by: Sommet Mapping Services
desroch@telus.net





Wanx talis

(Heath Bay)

Site Reference Number: 7054

TOP VIEW OPERATIONAL DIAGRAM

PROPOSED AREA OF LEASE: 163.67Ha

Legend

Farm Features	Water Features
Mooring Line	Shoreline
Shore Pin	0 Meter
Plow Anchor	Bathymetry
Operational Pen 120m Circle	Depth (Meter)
Non Operational Pen 120m Circle	Streams
Floats/Barges	Salmonid Streams
Utility	Rock
Feed barge	Boundaries
House	Proposed Lease Boundary
Mort	Intensive Use Area
Proposed Drift Area	Environmental Features
	Current Meter Location
	Primary Current Direction 2008
	Secondary Current Direction 2008

Cage Array Coordinates:	SW	50° 53.509' - 127° 53.891'
	NW	50° 53.675' - 127° 53.817'
	SE	50° 53.486' - 127° 53.760'
	NE	50° 53.652' - 127° 53.686'

THIS MAP HAS THE UTM GRID
USE THE BATHYMETRIC CHART FOR THE EXACT MAGNETIC DECLINATION
All Latitude and Longitude are Degree-Decimal Minutes
Approximate anchor locations

Reference Map: 92L
Base Map 92L001-92L001
Bathymetry Base Chart: 3549

UTM NAD83
Zone 9

Date: Dec. 13, 2013

SCALE 1:5000

50 0 50 100 150 200
Meters

Prepared by: Sommet Mapping Services
desroch@telus.net