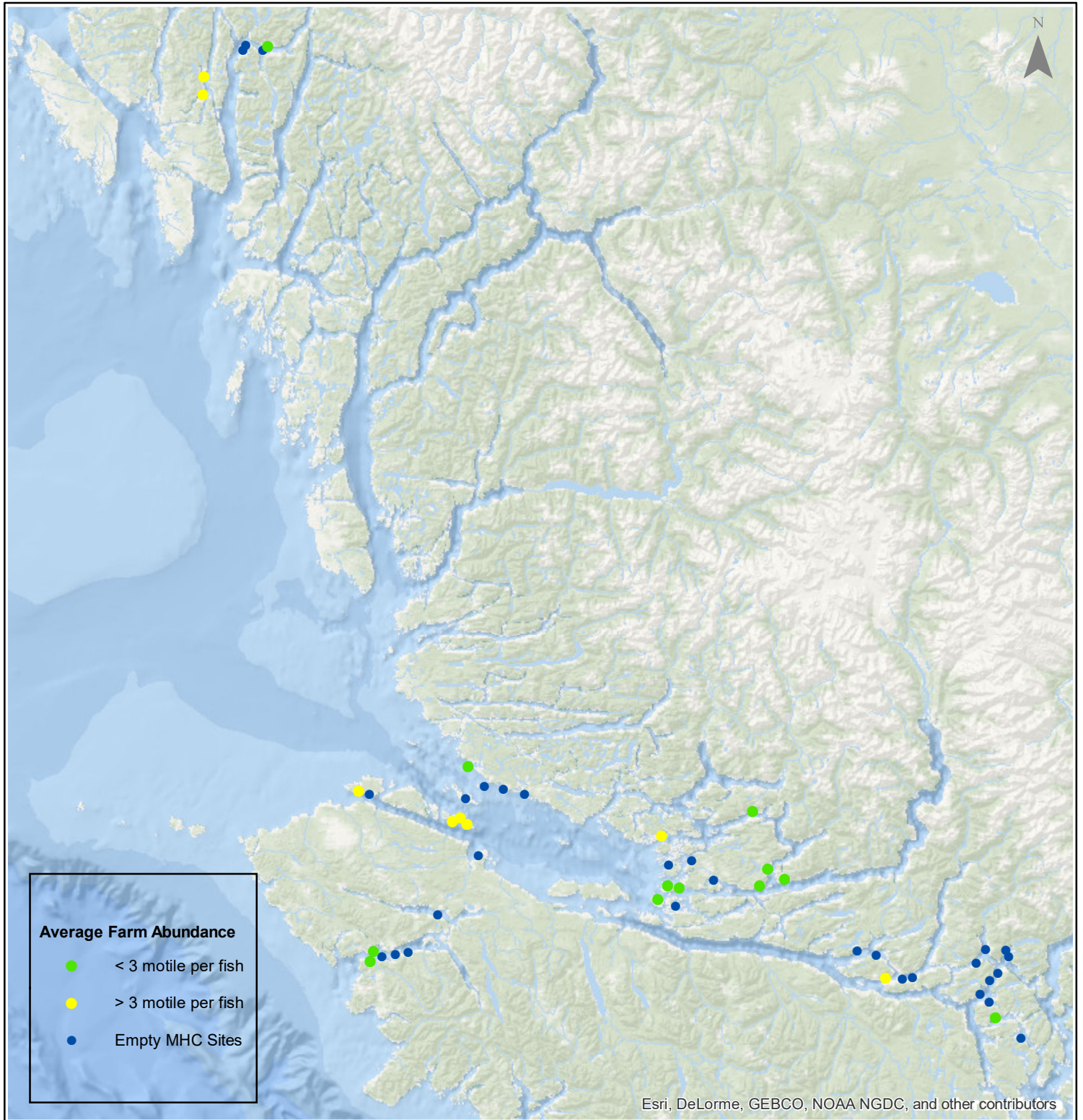


# Sea Lice Monitoring - Average Farm Abundance

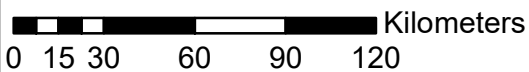
## All Sites - September 2017



1:2,500,000



Esri, DeLorme, GEBCO, NOAA NGDC, and other contributors



Coordinate System: WGS 1984 Web Mercator Auxiliary Sphere

Author: BC Centre for Aquatic Health Sciences Society

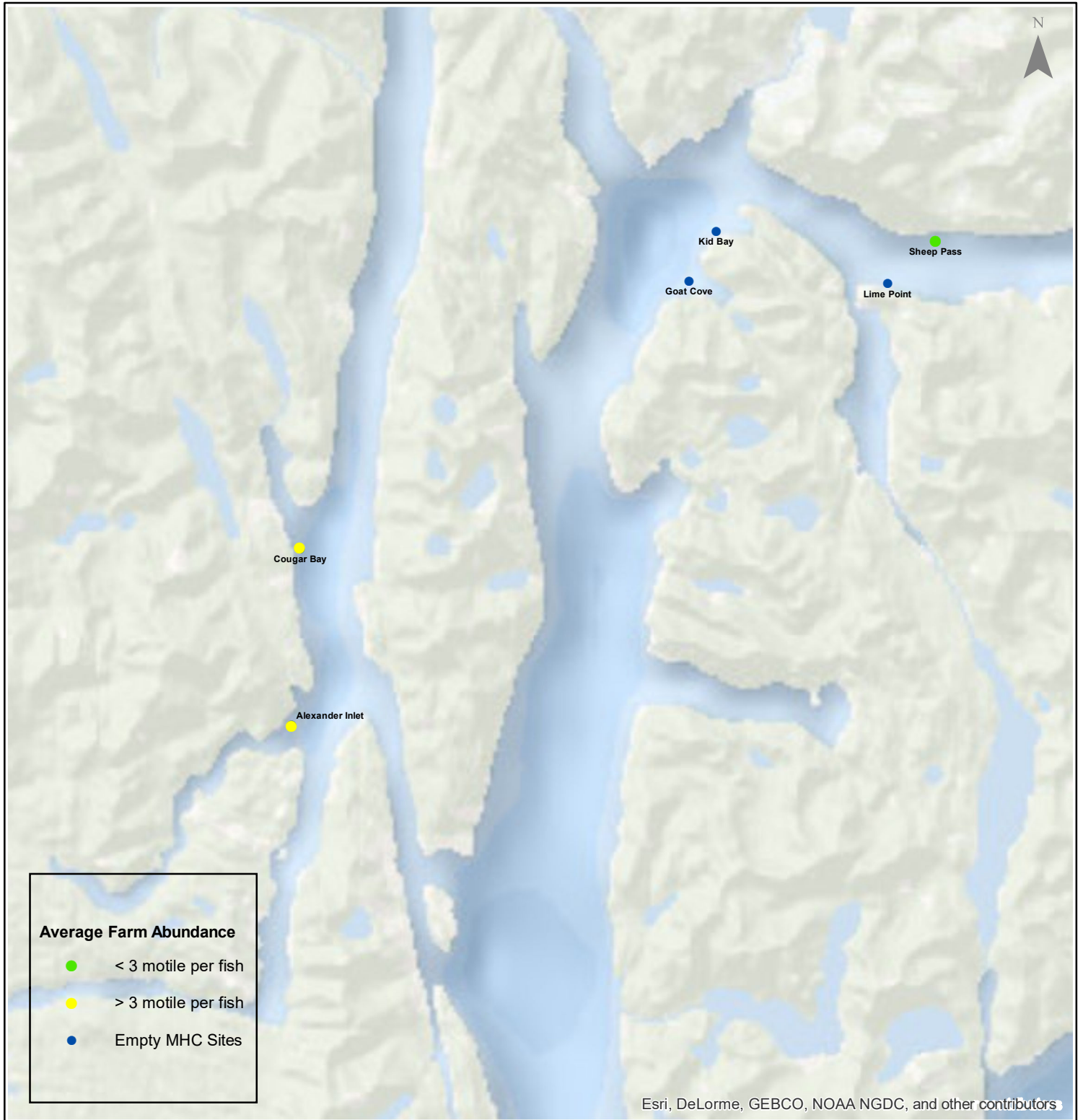
Date: 10/13/2017

# Sea Lice Monitoring - Average Farm Abundance

## *Klemtu - September 2017*



1:250,000



0 1.75 3.5 7 10.5 14 Kilometers

Coordinate System: WGS 1984 Web Mercator Auxiliary Sphere

Author: BC Centre for Aquatic Health Sciences Society

Date: 10/13/2017

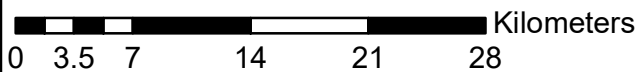
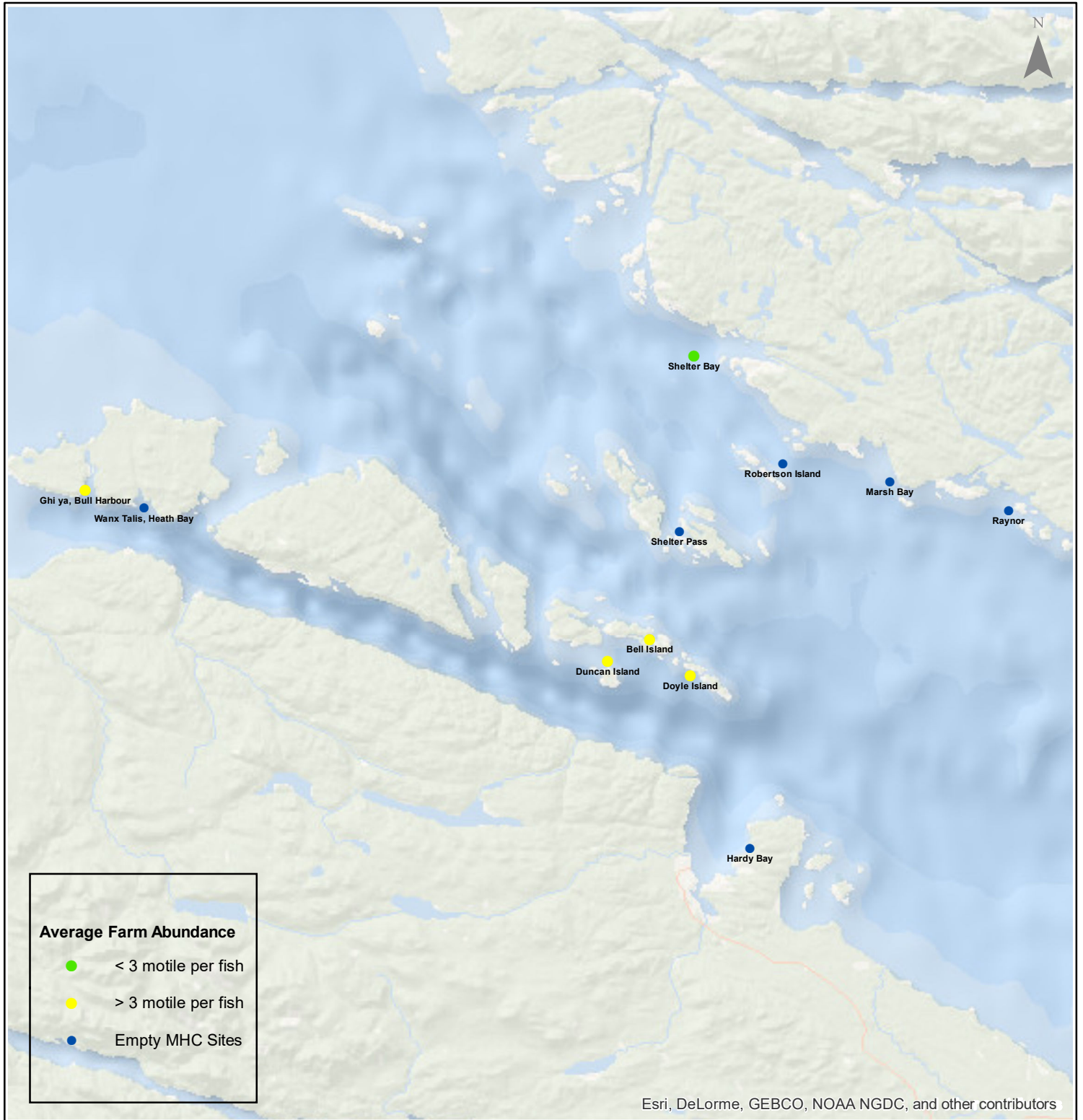


# Sea Lice Monitoring - Average Farm Abundance

## Port Hardy - September 2017



1:450,000



Coordinate System: WGS 1984 Web Mercator Auxiliary Sphere

Author: BC Centre for Aquatic Health Sciences Society

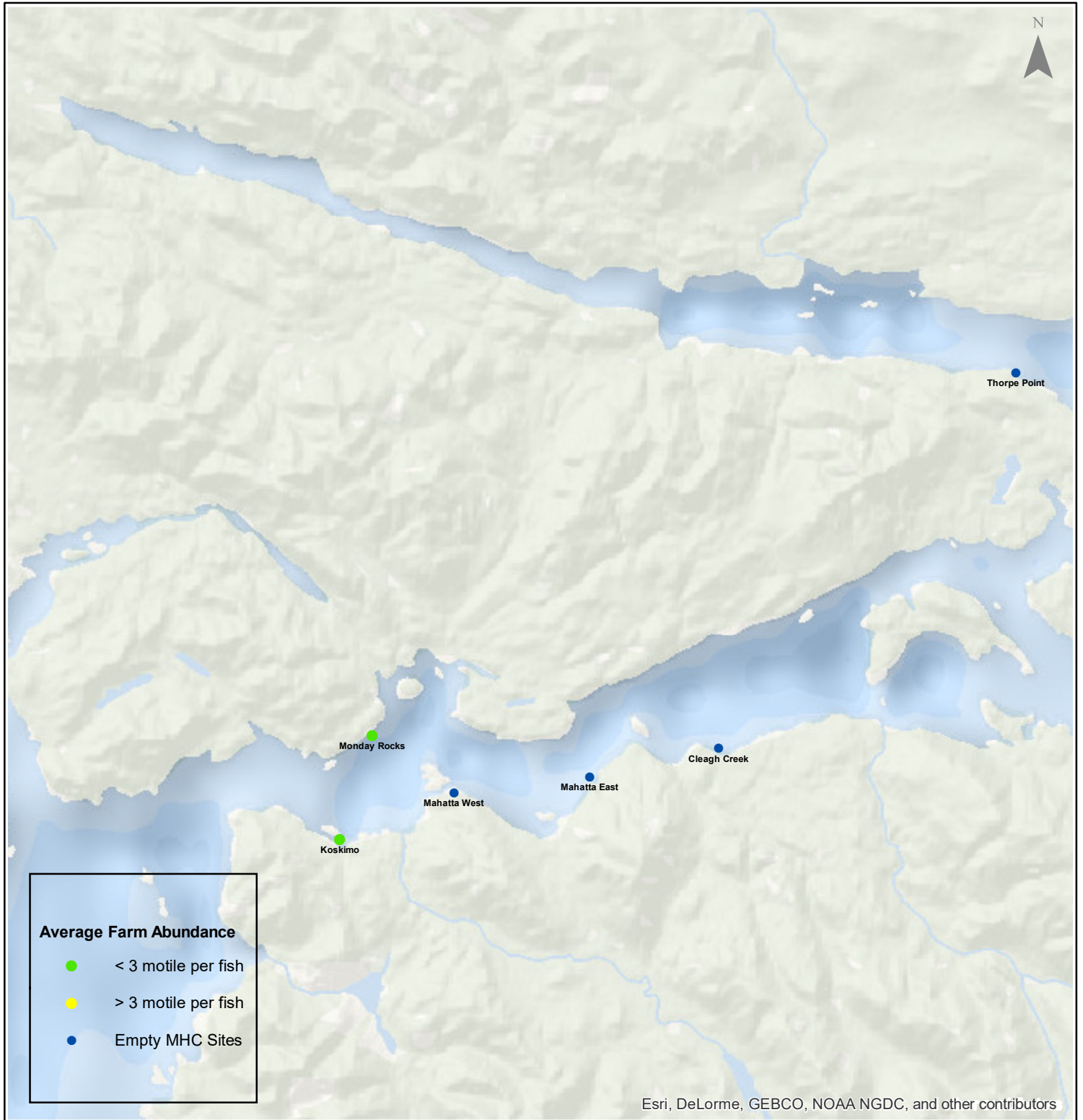
Date: 10/13/2017

# Sea Lice Monitoring - Average Farm Abundance

## Quatsino - September 2017



1:250,000



Esri, DeLorme, GEBCO, NOAA NGDC, and other contributors

Kilometers

Coordinate System: WGS 1984 Web Mercator Auxiliary Sphere

Author: BC Centre for Aquatic Health Sciences Society

Date: 10/13/2017

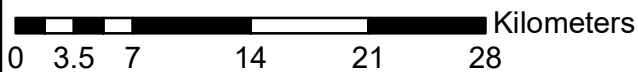
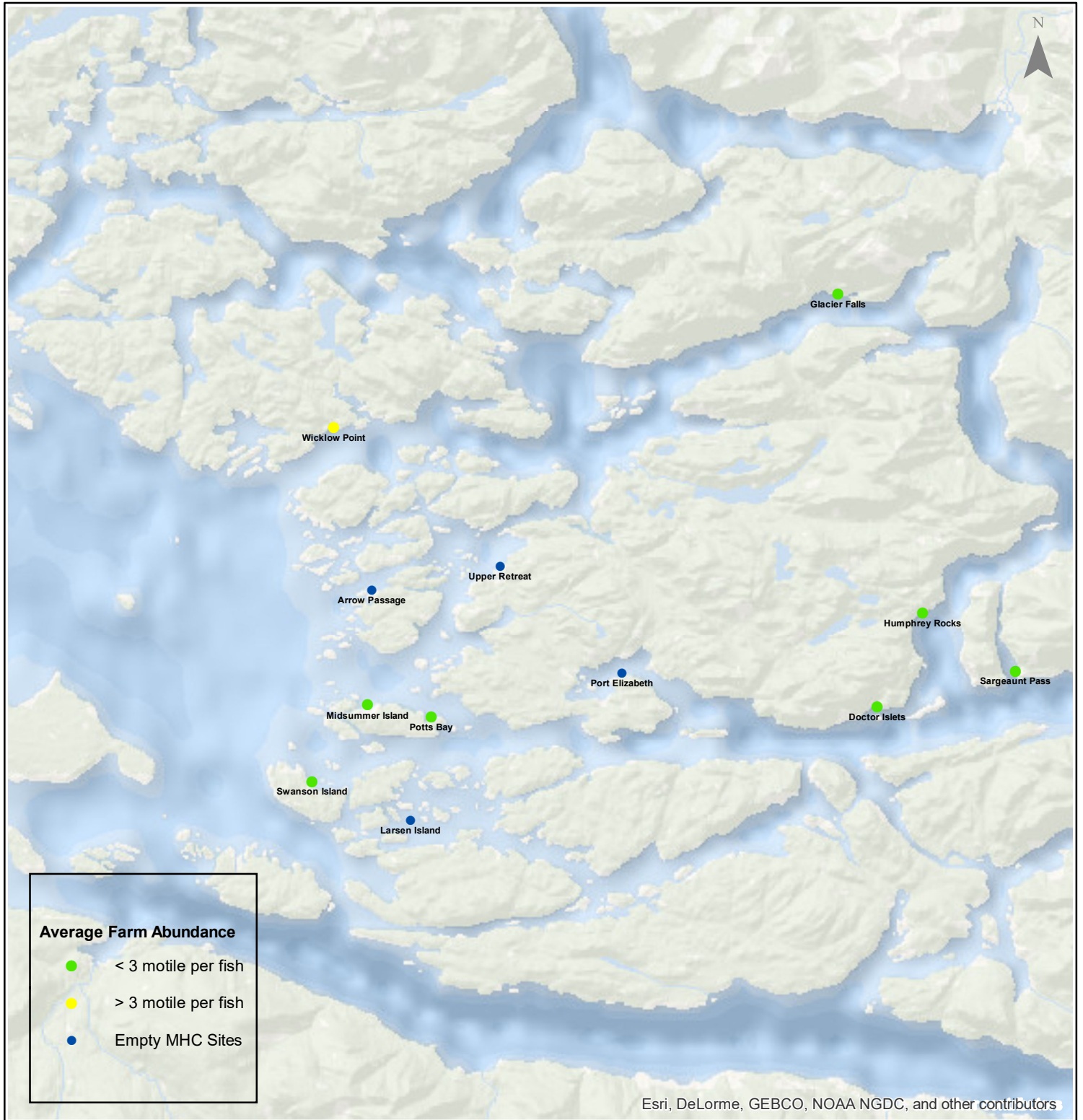


# Sea Lice Monitoring - Average Farm Abundance

## *Broughton - September 2017*



1:450,000



Coordinate System: WGS 1984 Web Mercator Auxiliary Sphere

Author: BC Centre for Aquatic Health Sciences Society

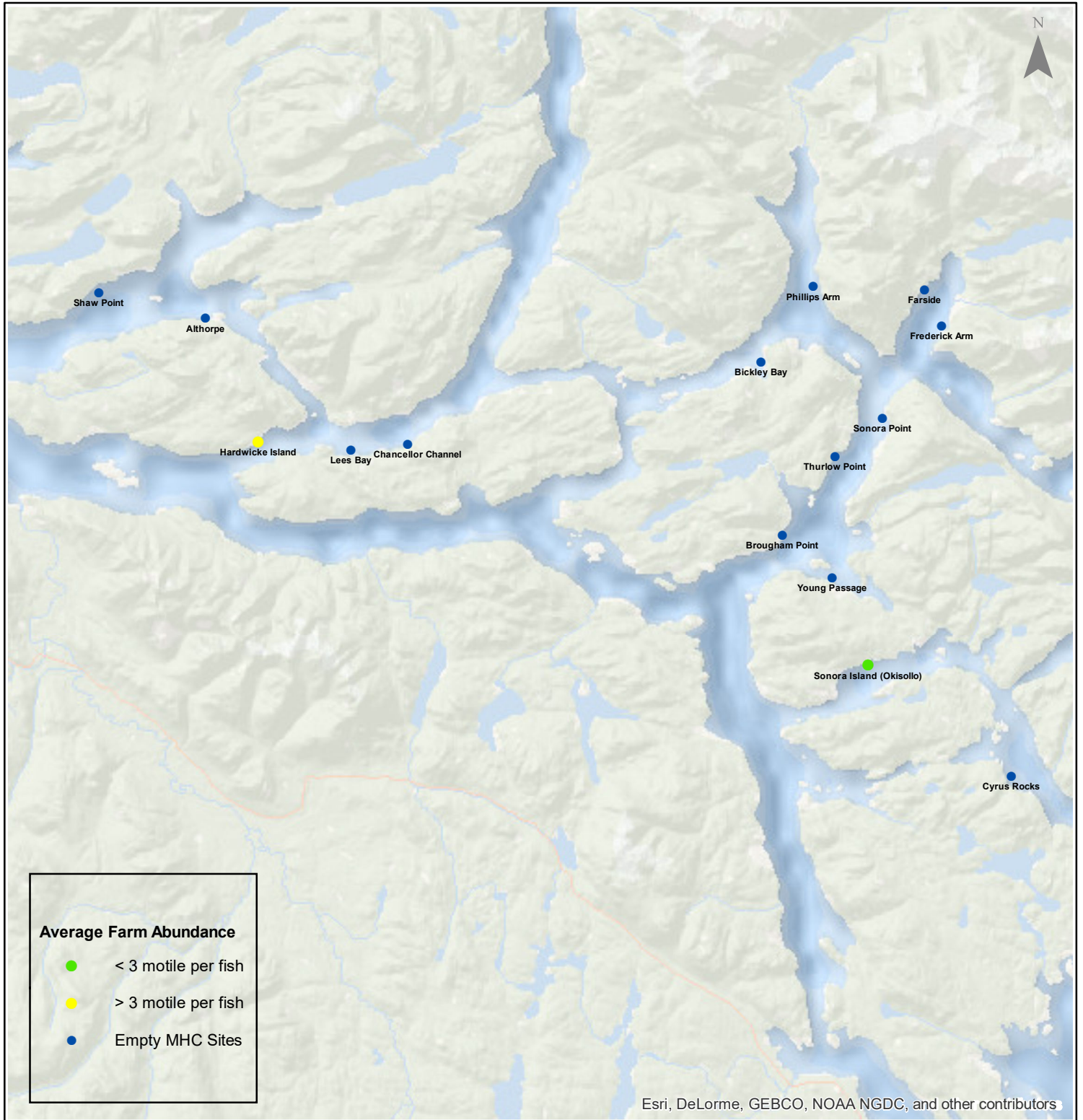
Date: 10/13/2017

# Sea Lice Monitoring - Average Farm Abundance

## *Campbell River - September 2017*



1:450,000



### Average Farm Abundance

- < 3 motile per fish
- > 3 motile per fish
- Empty MHC Sites

Esri, DeLorme, GEBCO, NOAA NGDC, and other contributors

0 3.5 7 14 21 28 Kilometers

Coordinate System: WGS 1984 Web Mercator Auxiliary Sphere

Author: BC Centre for Aquatic Health Sciences Society

Date: 10/13/2017

Sea Lice Monitoring - Average Farm Abundance

SiteArea	Facility	Date Sampled	Motile L. salmonis	Memo	EMB* Rx Start Date	H2O2** Rx Start Date
Broughton	Arrow Passage	9 2017		Fallow		
Broughton	Doctor Islets	9 2017	0.20		11-Feb-17	
Broughton	Glacier Falls	9 2017	0.48			
Broughton	Humphrey Rocks	9 2017	0.16			
Broughton	Larsen Island	9 2017		Fallow		
Broughton	Midsummer Island	9 2017	0.35			
Broughton	Port Elizabeth	9 2017		Fallow		
Broughton	Potts Bay	9 2017	2.06		1-Feb-17	
Broughton	Sargeant Pass	9 2017	0.02			
Broughton	Swanson Island	9 2017	1.95		17-Jan-17	
Broughton	Upper Retreat	9 2017		Fallow		
Broughton	Wicklow Point	9 2017	5.51	SLICE	28-Sep-17	
Campbell River	Althorpe	9 2017		No sampling due to low dissolved oxygen and harmful plankton. SLICE treatment planned for mid October	19-Jan-17	
Campbell River	Bickley Bay	9 2017		Fallow		
Campbell River	Brougham Point	9 2017		Fallow		
Campbell River	Chancellor Channel	9 2017		Fallow		
Campbell River	Cyrus Rocks	9 2017		Fallow		
Campbell River	Dunsterville	9 2017		Fallow		
Campbell River	Egerton Creek	9 2017		Fallow		
Campbell River	Farside	9 2017		Fallow		
Campbell River	Frederick Arm	9 2017		Fallow		
Campbell River	Hardwicke Island	9 2017	4.28	Harvesting	21-Nov-16	
Campbell River	Lees Bay	9 2017		Fallow		
Campbell River	Phillips Arm	9 2017		Fallow		
Campbell River	Read Island	9 2017		Fallow		
Campbell River	Shaw Point	9 2017		Fallow		
Campbell River	Sonora Island (Okisollo)	9 2017	0.55			11-Aug-17
Campbell River	Sonora Point	9 2017		Fallow		
Campbell River	Thurlow Point	9 2017		Fallow		
Campbell River	Young Passage	9 2017		Fallow		
Klemtu	Alexander Inlet	9 2017	3.03	H2O2 in planning		8-Jul-17
Klemtu	Cougar Bay	9 2017	5.75	H2O2 planned for middle of October		12-Jul-17
Klemtu	Goat Cove	9 2017		Fallow		
Klemtu	Kid Bay	9 2017		Fallow		
Klemtu	Lime Point	9 2017		Fallow		
Klemtu	Sheep Pass	9 2017	1.05		16-Jun-17	25-Jan-17
Port Hardy	Bell Island	9 2017	3.10	Start fish transfers to Heath Bay on Sept 20		
Port Hardy	Doyle Island	9 2017	9.18	Harvesting	2-Mar-17	20-Nov-16
Port Hardy	Duncan Island	9 2017	7.14	Harvesting	25-Feb-17	27-Sep-16
Port Hardy	Ghi ya, Bull Harbour	9 2017	5.16	SLICE planned for late October		25-Jul-17
Port Hardy	Hardy Bay	9 2017		Fallow		
Port Hardy	Marsh Bay	9 2017		Fallow		
Port Hardy	Raynor	9 2017		Fallow		
Port Hardy	Robertson Island	9 2017		Fallow		
Port Hardy	Shelter Bay	9 2017	0.75			
Port Hardy	Shelter Pass	9 2017		Fallow as of Sept 13, 2017	2-Mar-17	
Port Hardy	Wanx Talis, Heath Bay	9 2017		Recent transfer, H2O2		20-Sep-17
Quatsino	Cleagh Creek	9 2017		Fallow		
Quatsino	Koskimo	9 2017	1.66			21-May-17
Quatsino	Mahatta East	9 2017		No sampling due to low dissolved oxygen and harmful plankton.		25-Apr-17
Quatsino	Mahatta West	9 2017		Fallow		
Quatsino	Monday Rocks	9 2017	0.53			7-May-17
Quatsino	Thorpe Point	9 2017		Fallow		

\*Enamectin Benzoate (Brand Name SLICE)

\*\* Hydrogen Peroxide (Brand Name Interlox Paramove 50)

