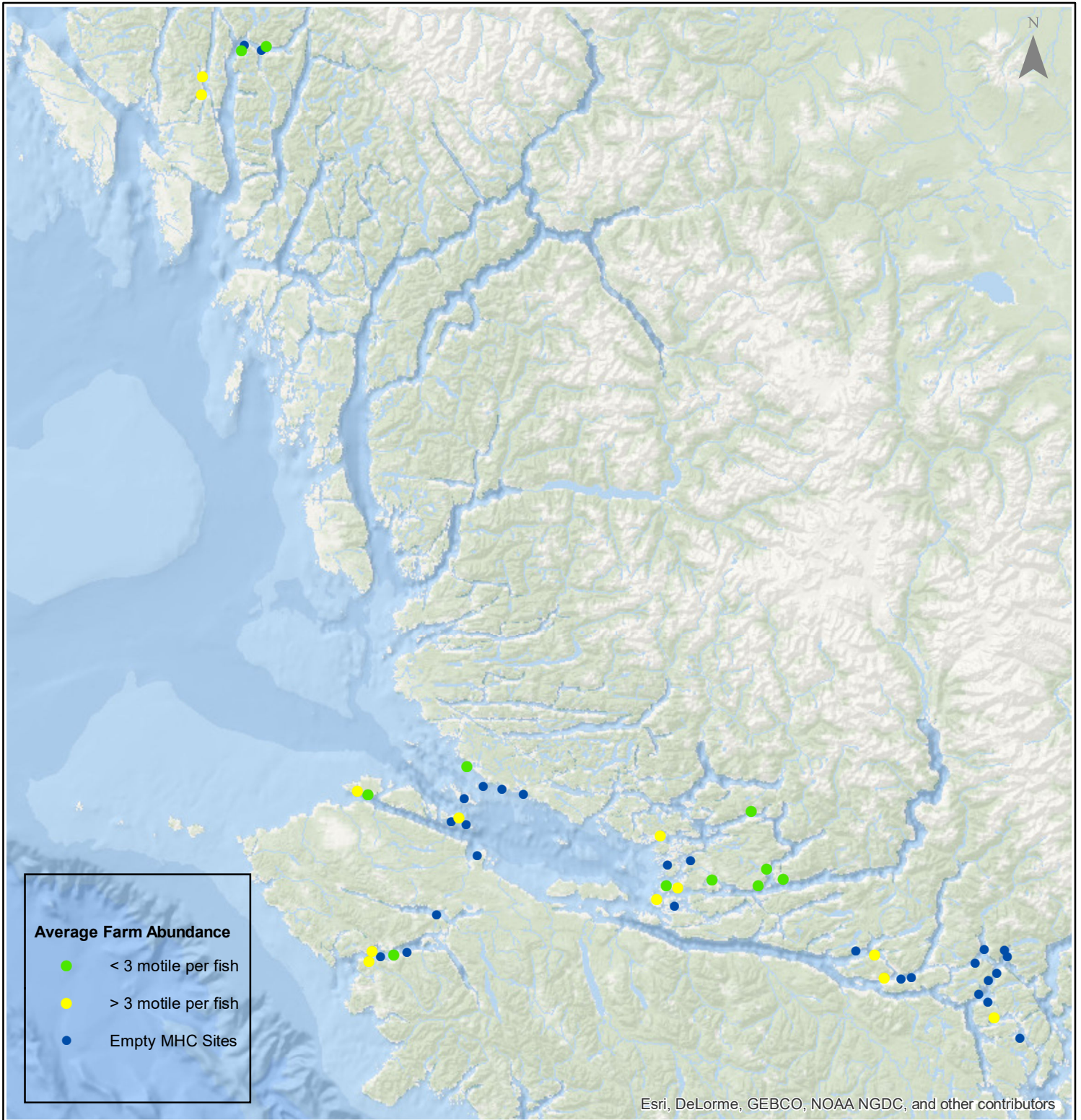


# Sea Lice Monitoring - Average Farm Abundance

## All Sites - October 2017



1:2,500,000



Esri, DeLorme, GEBCO, NOAA NGDC, and other contributors

0 15 30 60 90 120 Kilometers

Coordinate System: WGS 1984 Web Mercator Auxiliary Sphere

Author: BC Centre for Aquatic Health Sciences Society

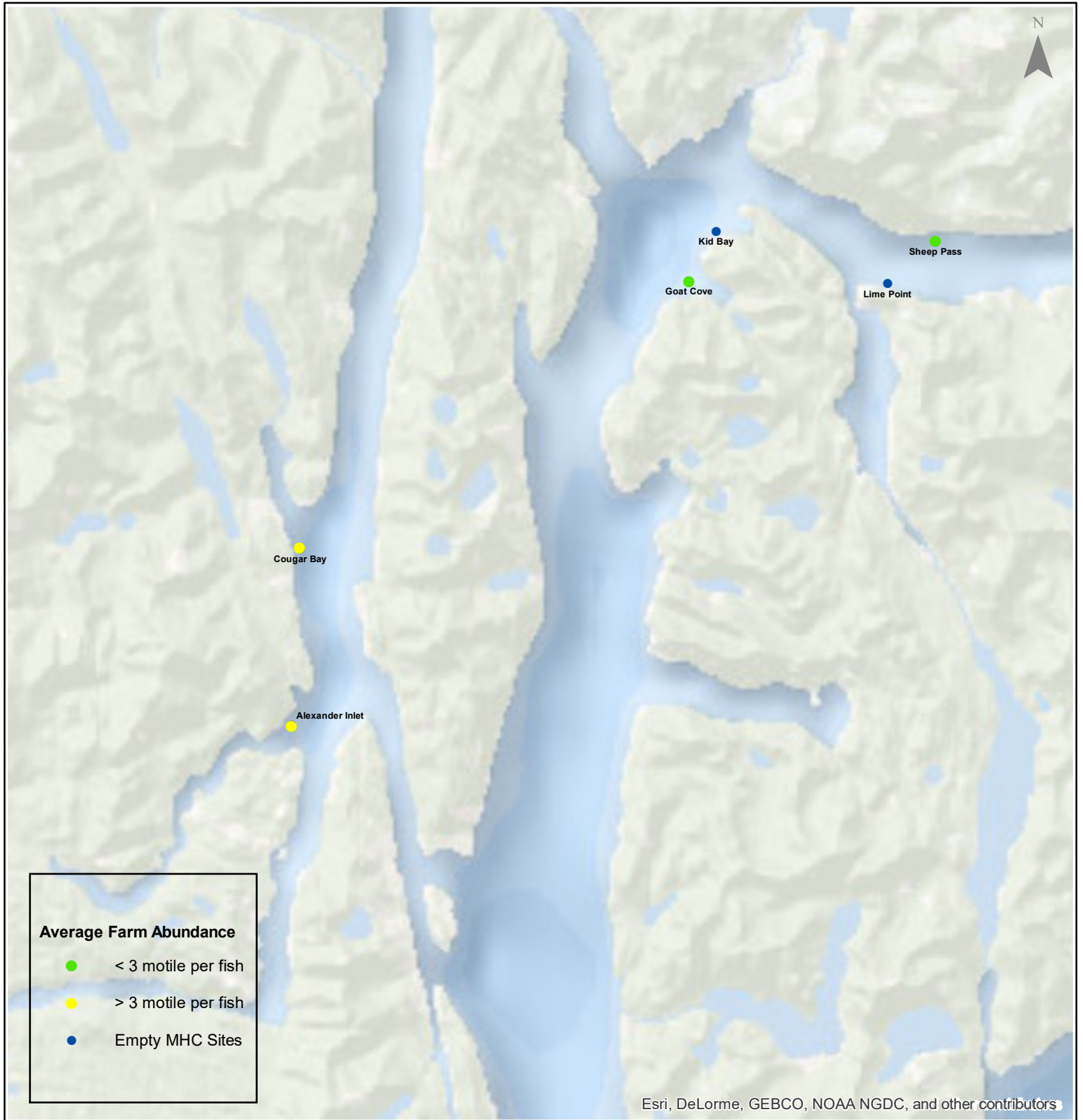
Date: 11/14/2017

# Sea Lice Monitoring - Average Farm Abundance

## *Klemtu - October 2017*



1:250,000



0 1.75 3.5 7 10.5 14 Kilometers

Esri, DeLorme, GEBCO, NOAA NGDC, and other contributors

Coordinate System: WGS 1984 Web Mercator Auxiliary Sphere

Author: BC Centre for Aquatic Health Sciences Society

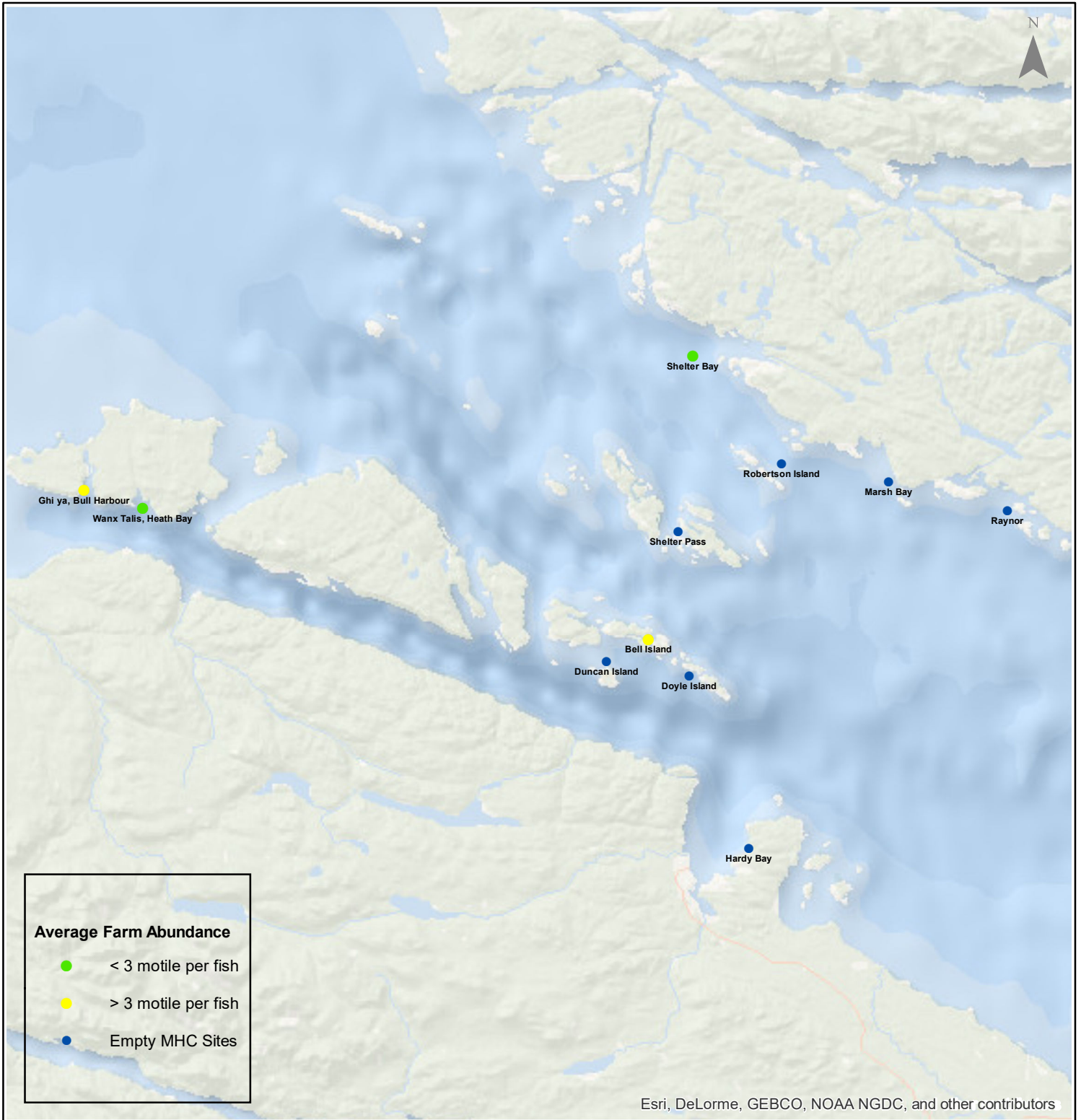
Date: 11/14/2017

# Sea Lice Monitoring - Average Farm Abundance

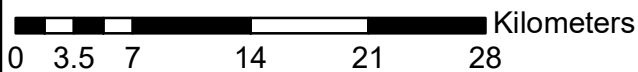
## Port Hardy - October 2017



1:450,000



Esri, DeLorme, GEBCO, NOAA NGDC, and other contributors



Coordinate System: WGS 1984 Web Mercator Auxiliary Sphere

Author: BC Centre for Aquatic Health Sciences Society

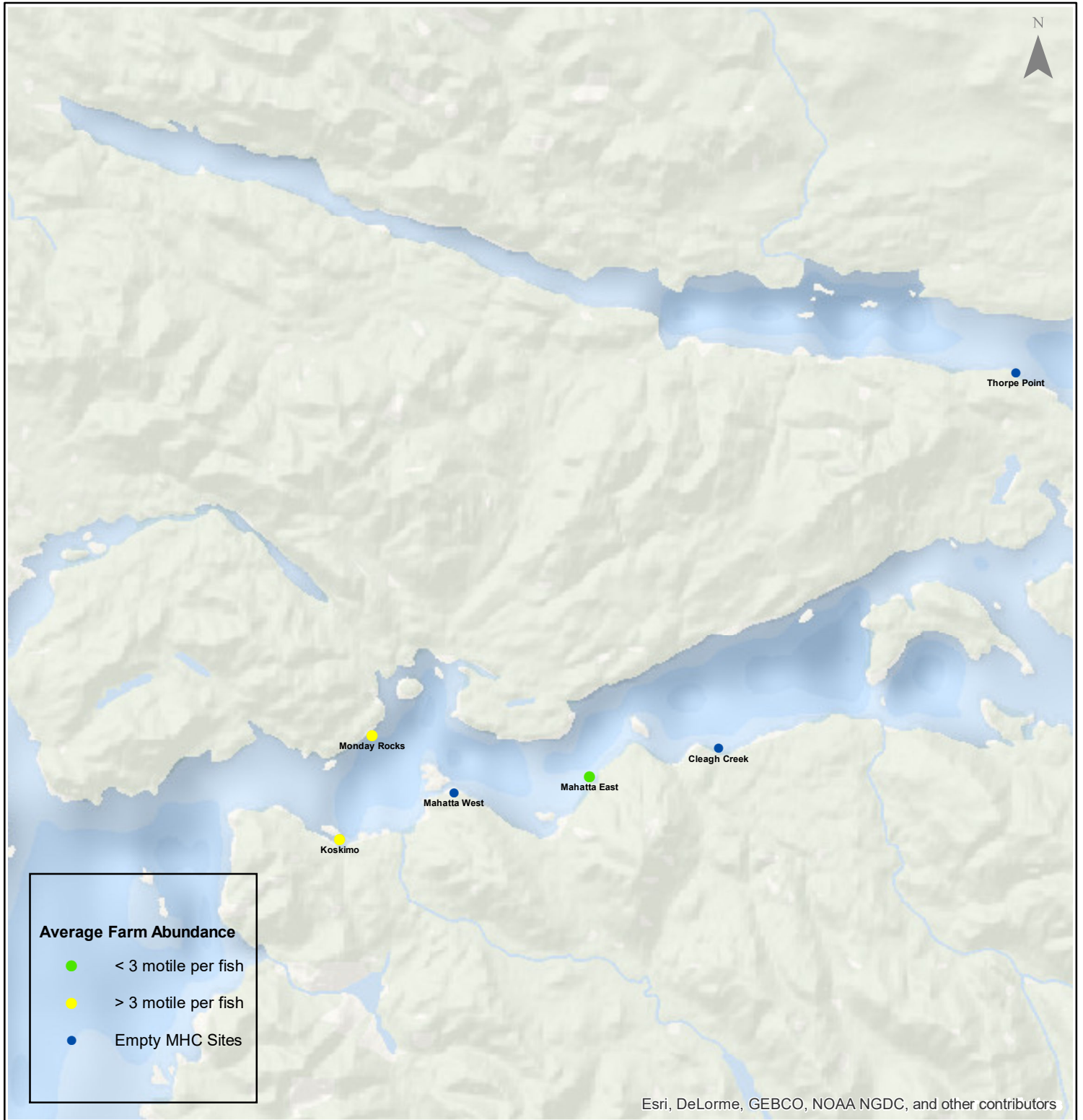
Date: 11/14/2017

# Sea Lice Monitoring - Average Farm Abundance

## Quatsino - October 2017



1:250,000



Esri, DeLorme, GEBCO, NOAA NGDC, and other contributors

Kilometers

Coordinate System: WGS 1984 Web Mercator Auxiliary Sphere

Author: BC Centre for Aquatic Health Sciences Society

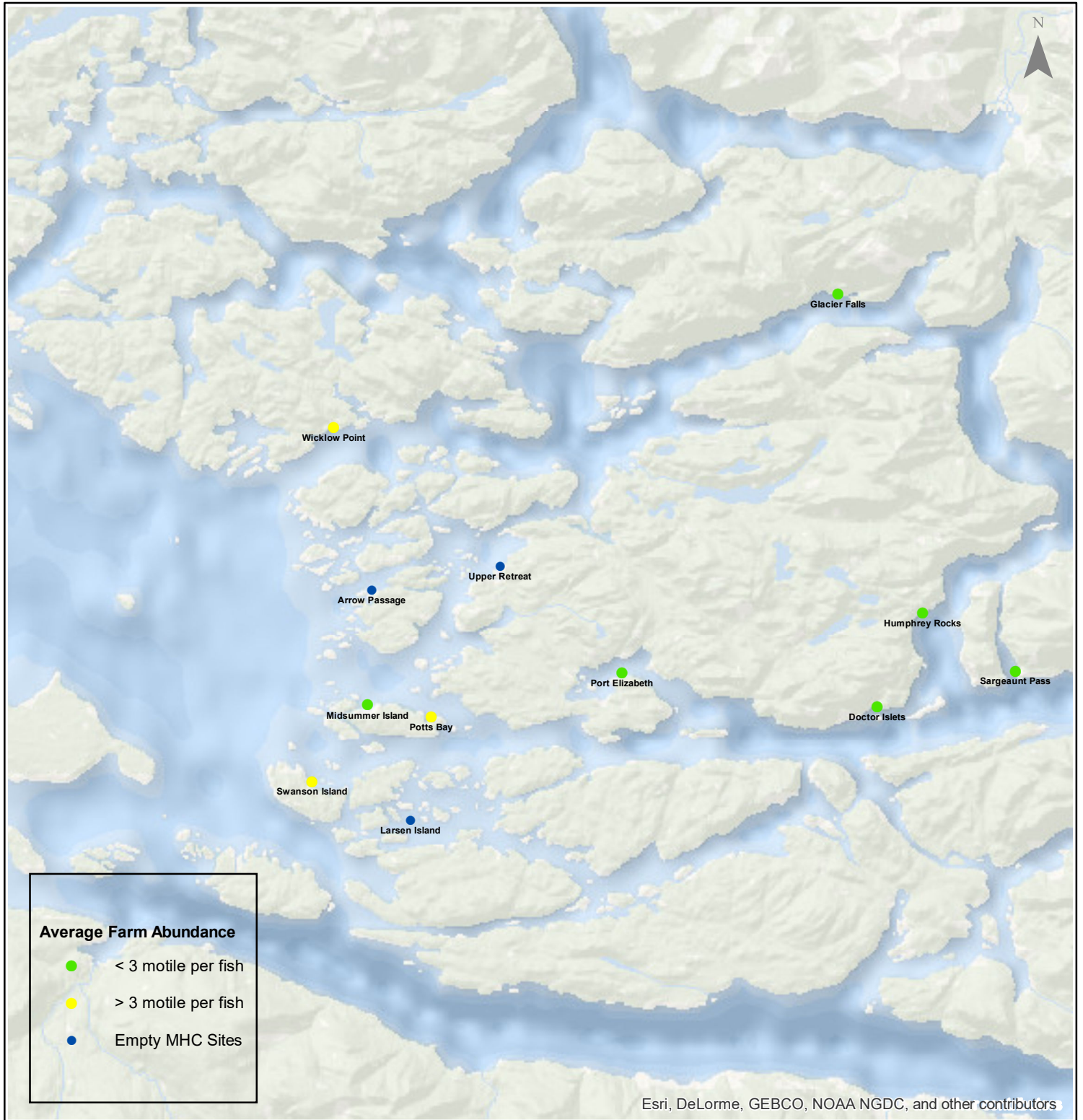
Date: 11/14/2017

# Sea Lice Monitoring - Average Farm Abundance

## *Broughton - October 2017*



1:450,000



### Average Farm Abundance

- < 3 motile per fish
- > 3 motile per fish
- Empty MHC Sites

Esri, DeLorme, GEBCO, NOAA NGDC, and other contributors

0 3.5 7 14 21 28 Kilometers

Coordinate System: WGS 1984 Web Mercator Auxiliary Sphere

Author: BC Centre for Aquatic Health Sciences Society

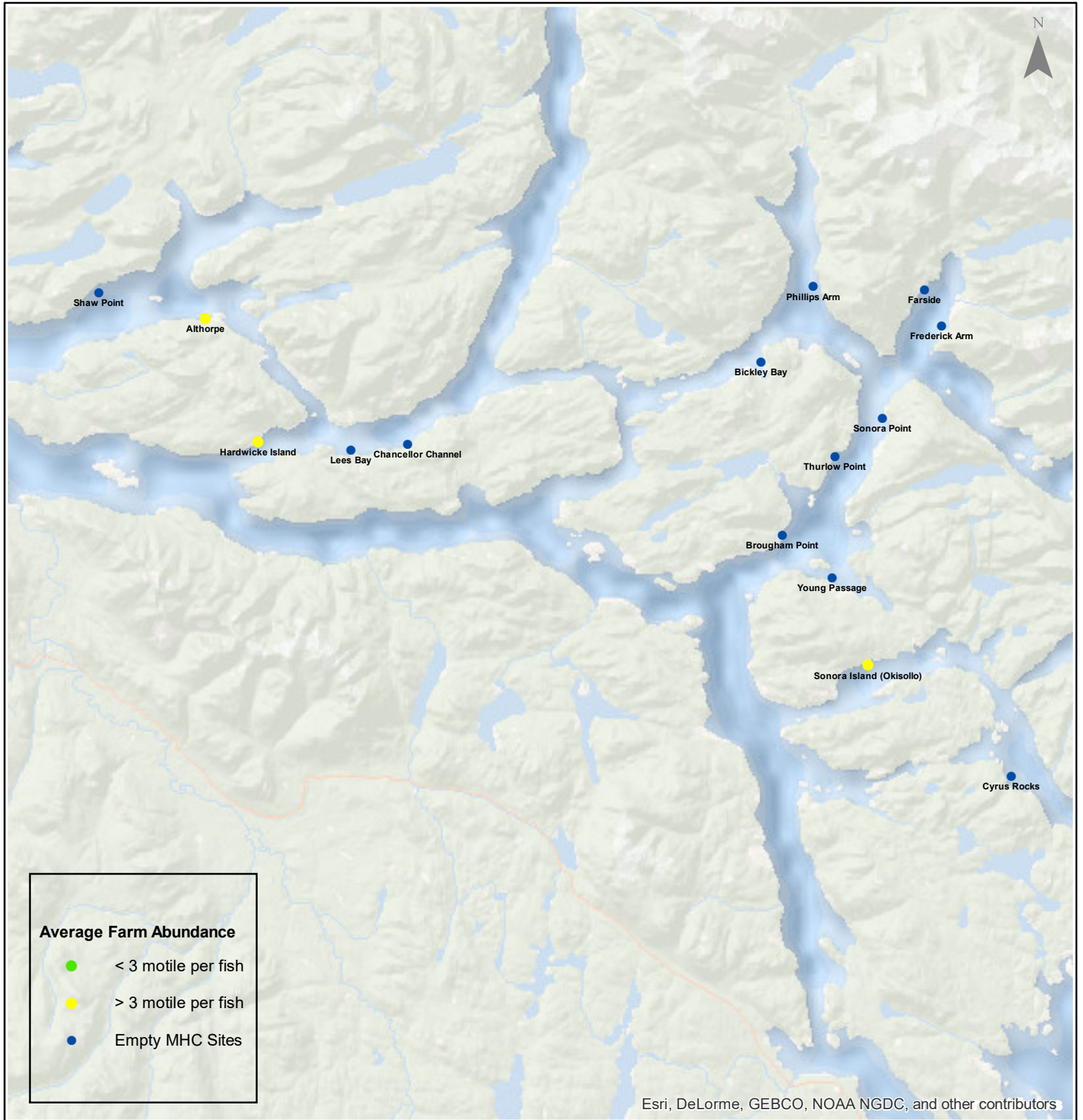
Date: 11/14/2017

# Sea Lice Monitoring - Average Farm Abundance

## Campbell River - October 2017



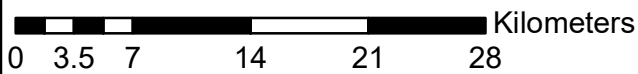
1:450,000



**Average Farm Abundance**

- < 3 motile per fish
- > 3 motile per fish
- Empty MHC Sites

Esri, DeLorme, GEBCO, NOAA NGDC, and other contributors



Coordinate System: WGS 1984 Web Mercator Auxiliary Sphere

Author: BC Centre for Aquatic Health Sciences Society

Date: 11/14/2017

Sea Lice Monitoring - Average Farm Abundance

SiteArea	Facility	Date Sampled	Motile L. salmonis	Memo	EMB* Rx Start Date	H2O2** Rx Start Date
Broughton	Arrow Passage	10 2017		Fallow		
Broughton	Doctor Islets	10 2017	0.48	Finished moving fish to Heath Bay, fallow as of Oct 17, 2017	11-Feb-17	
Broughton	Glacier Falls	10 2017	0.97			
Broughton	Humphrey Rocks	10 2017	0.30			
Broughton	Larsen Island	10 2017		Fallow		
Broughton	Midsummer Island	10 2017	0.83			
Broughton	Port Elizabeth	10 2017	0.00			
Broughton	Potts Bay	10 2017	3.73	Treatment in planning	1-Feb-17	
Broughton	Sargeaunt Pass	10 2017	0.08			
Broughton	Swanson Island	10 2017	3.57	Harvesting	17-Jan-17	
Broughton	Upper Retreat	10 2017		Fallow		
Broughton	Wicklow Point	10 2017	5.77	To begin harvesting soon	28-Sep-17	
Campbell River	Althorpe	10 2017	6.90	SLICE	30-Oct-17	
Campbell River	Bickley Bay	10 2017		Fallow		
Campbell River	Brougham Point	10 2017		Fallow		
Campbell River	Chancellor Channel	10 2017		Fallow		
Campbell River	Cyrus Rocks	10 2017		Fallow		
Campbell River	Dunsterville	10 2017		Fallow		
Campbell River	Egerton Creek	10 2017		Fallow		
Campbell River	Farside	10 2017		Fallow		
Campbell River	Frederick Arm	10 2017		Fallow		
Campbell River	Hardwicke Island	10 2017	5.08	Harvesting	21-Nov-16	
Campbell River	Lees Bay	10 2017		Fallow		
Campbell River	Phillips Arm	10 2017		Fallow		
Campbell River	Read Island	10 2017		Fallow		
Campbell River	Shaw Point	10 2017		Fallow		
Campbell River	Sonora Island (Okisollo)	10 2017	3.89	SLICE planned for early November		11-Aug-17
Campbell River	Sonora Point	10 2017		Fallow		
Campbell River	Thurlow Point	10 2017		Fallow		
Campbell River	Young Passage	10 2017		Fallow		
Klemtu	Alexander Inlet	10 2017	6.29	H2O2		31-Oct-17
Klemtu	Cougar Bay	10 2017	6.19	Fish transferred to Goat Cove, fallow as of Oct 27, 2017		12-Jul-17
Klemtu	Goat Cove	10 2017	0.21	H2O2		20-Oct-17
Klemtu	Kid Bay	10 2017		Fallow		
Klemtu	Lime Point	10 2017		Fallow		
Klemtu	Sheep Pass	10 2017	1.86	Harvesting	16-Jun-17	25-Jan-17
Port Hardy	Bell Island	10 2017	3.87			
Port Hardy	Doyle Island	10 2017		Harvest ongoing, fallow as of Oct 12, 2017	2-Mar-17	20-Nov-16
Port Hardy	Duncan Island	10 2017		Harvest ongoing, fallow as of Oct 29, 2017	25-Feb-17	27-Sep-16
Port Hardy	Ghi ya, Bull Harbour	10 2017	3.31	SLICE	25-Oct-17	25-Jul-17
Port Hardy	Hardy Bay	10 2017		Fallow		
Port Hardy	Marsh Bay	10 2017		Fallow		
Port Hardy	Raynor	10 2017		Fallow		
Port Hardy	Robertson Island	10 2017		Fallow		
Port Hardy	Shelter Bay	10 2017	1.05			
Port Hardy	Shelter Pass	10 2017		Fallow		
Port Hardy	Wanx Talis, Heath Bay	10 2017	0.98			20-Sep-17
Quatsino	Cleagh Creek	10 2017		Fallow		
Quatsino	Koskimo	10 2017	3.59	SLICE planned for mid November		21-May-17
Quatsino	Mahatta East	10 2017	1.98	SLICE planned for mid November		25-Apr-17
Quatsino	Mahatta West	10 2017		Fallow		
Quatsino	Monday Rocks	10 2017	3.45	SLICE planned for mid November		7-May-17
Quatsino	Thorpe Point	10 2017		Fallow		

\*Emamectin Benzoate (Brand Name SLICE)

\*\* Hydrogen Peroxide (Brand Name Interlox Paramove 50)

