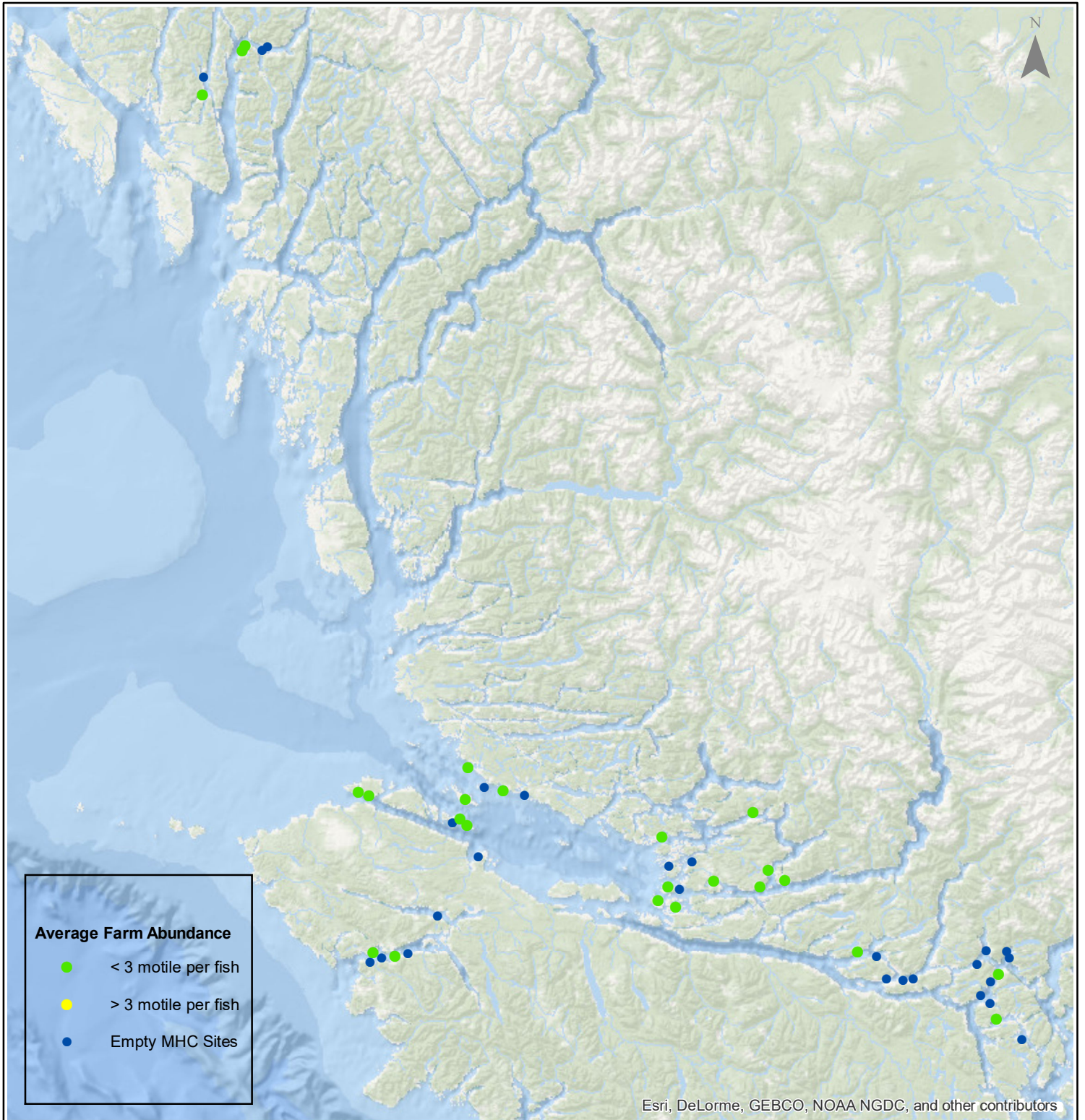


# Sea Lice Monitoring - Average Farm Abundance

## All Sites - May 2018



1:2,500,000



Esri, DeLorme, GEBCO, NOAA NGDC, and other contributors

0 15 30 60 90 120 Kilometers

Coordinate System: WGS 1984 Web Mercator Auxiliary Sphere

Author: BC Centre for Aquatic Health Sciences Society

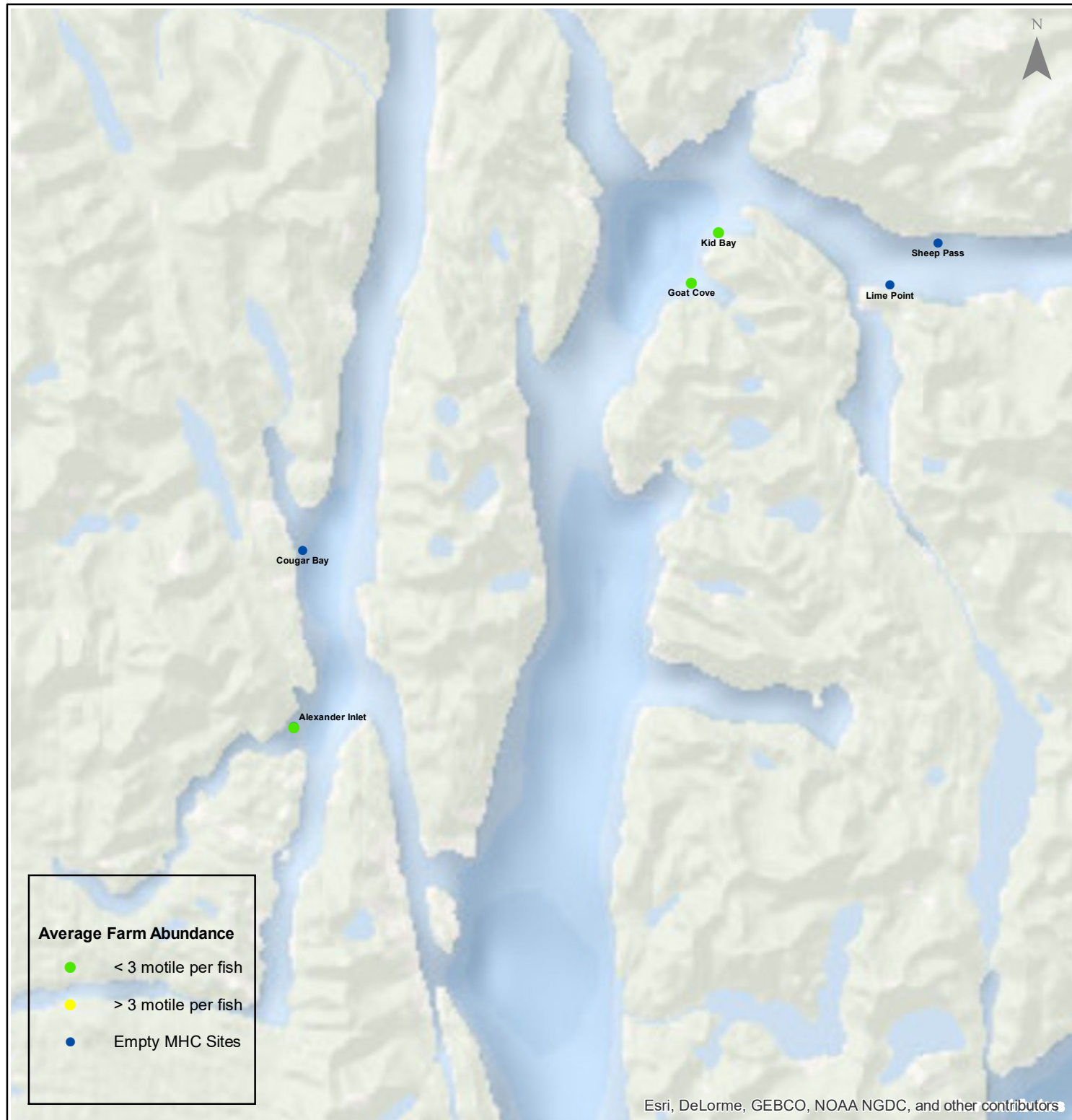
Date: 15 Jun 2018

# Sea Lice Monitoring - Average Farm Abundance

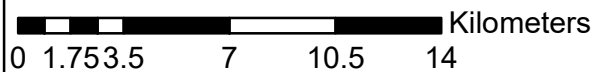
## *Klemtu - May 2018*



1:250,000



Esri, DeLorme, GEBCO, NOAA NGDC, and other contributors



Coordinate System: WGS 1984 Web Mercator Auxiliary Sphere

Author: BC Centre for Aquatic Health Sciences Society

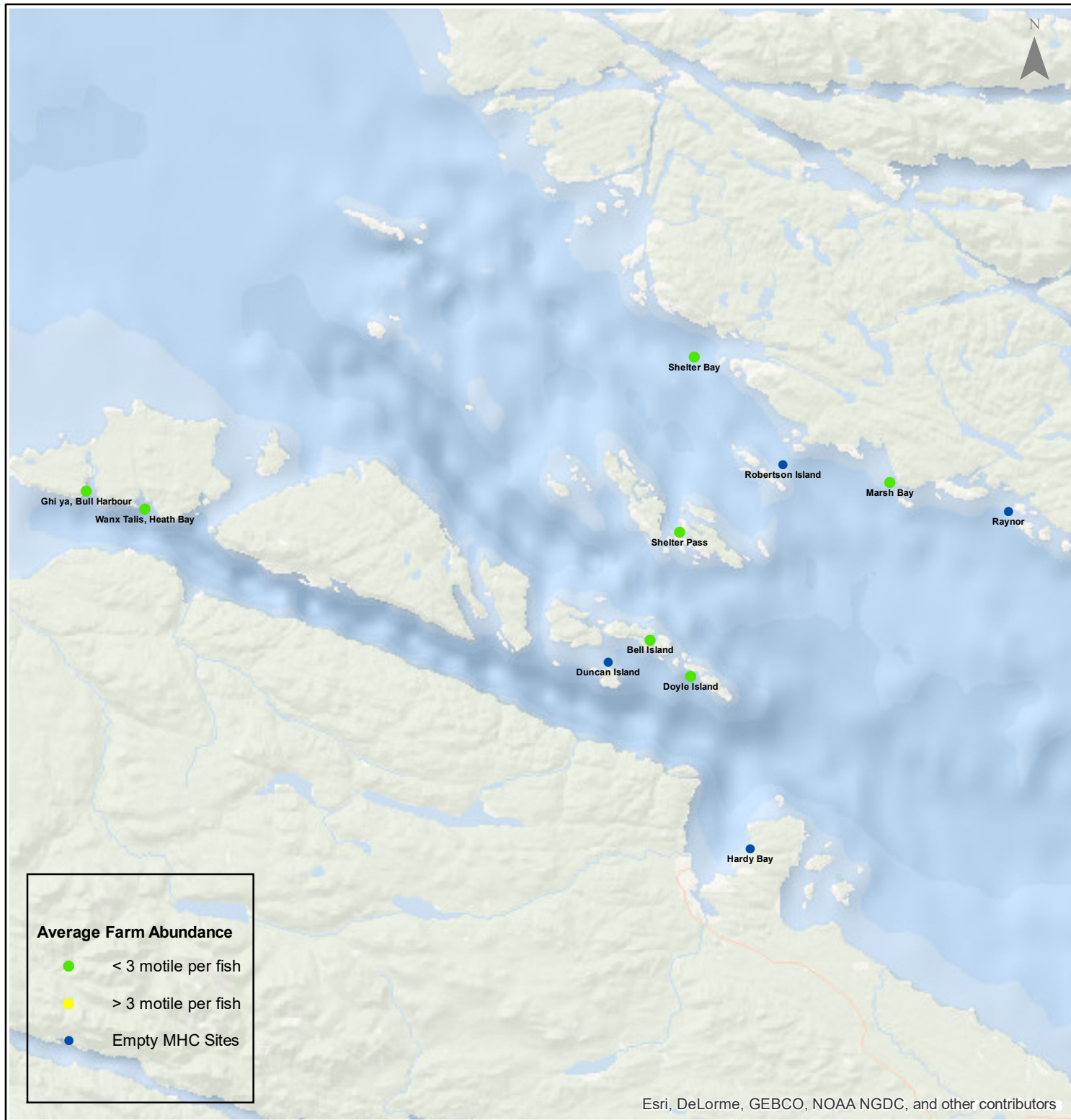
Date: 15 Jun 2018

# Sea Lice Monitoring - Average Farm Abundance

## Port Hardy - May 2018



1:450,000



Esri, DeLorme, GEBCO, NOAA NGDC, and other contributors

Coordinate System: WGS 1984 Web Mercator Auxiliary Sphere

Author: BC Centre for Aquatic Health Sciences Society

Date: 15 Jun 2018

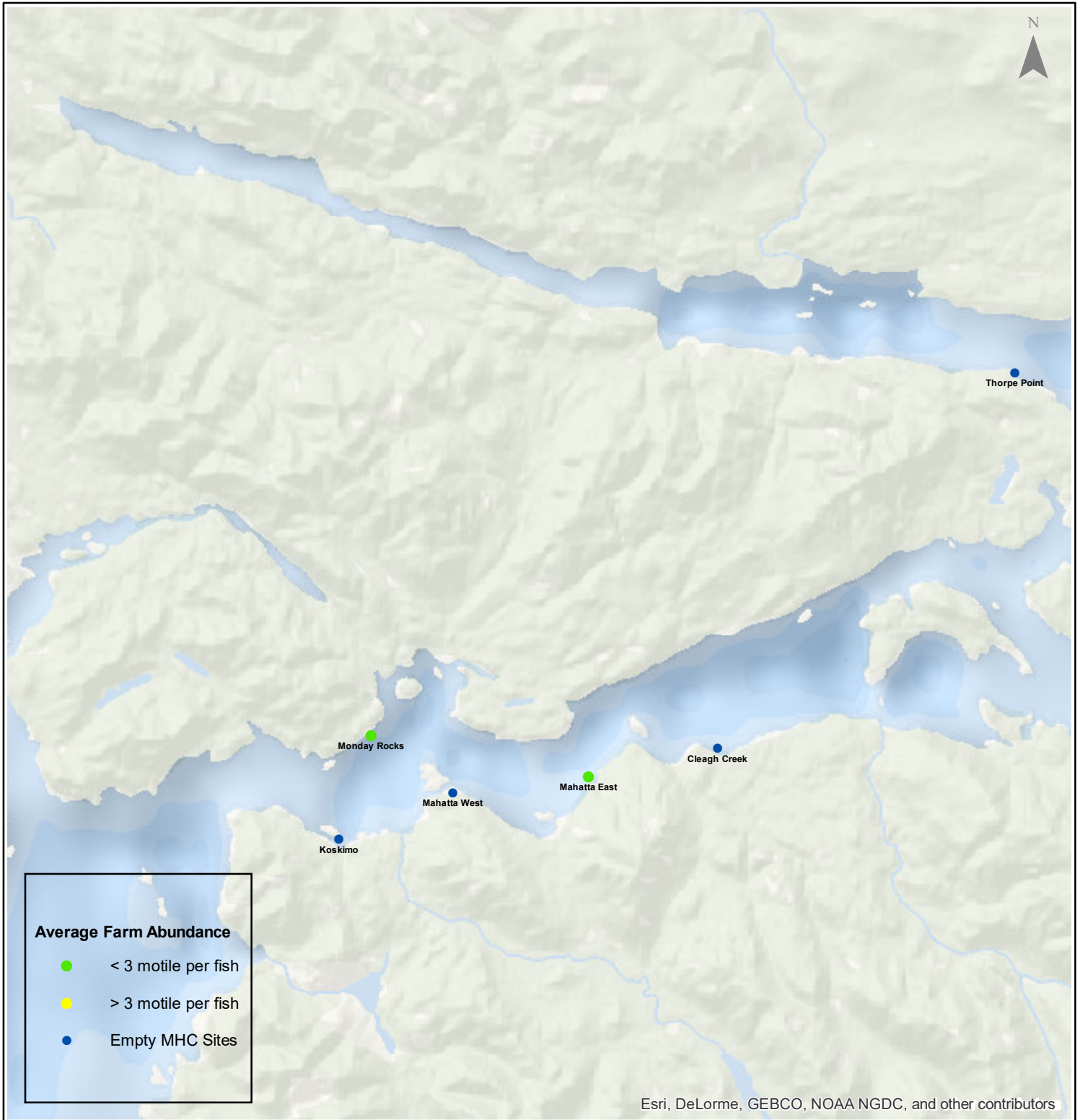
0 3.5 7 14 21 28 Kilometers

# Sea Lice Monitoring - Average Farm Abundance

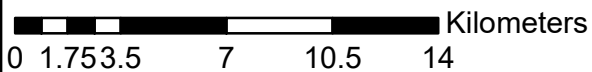
## Quatsino - May 2018



1:250,000



Esri, DeLorme, GEBCO, NOAA NGDC, and other contributors



Coordinate System: WGS 1984 Web Mercator Auxiliary Sphere

Author: BC Centre for Aquatic Health Sciences Society

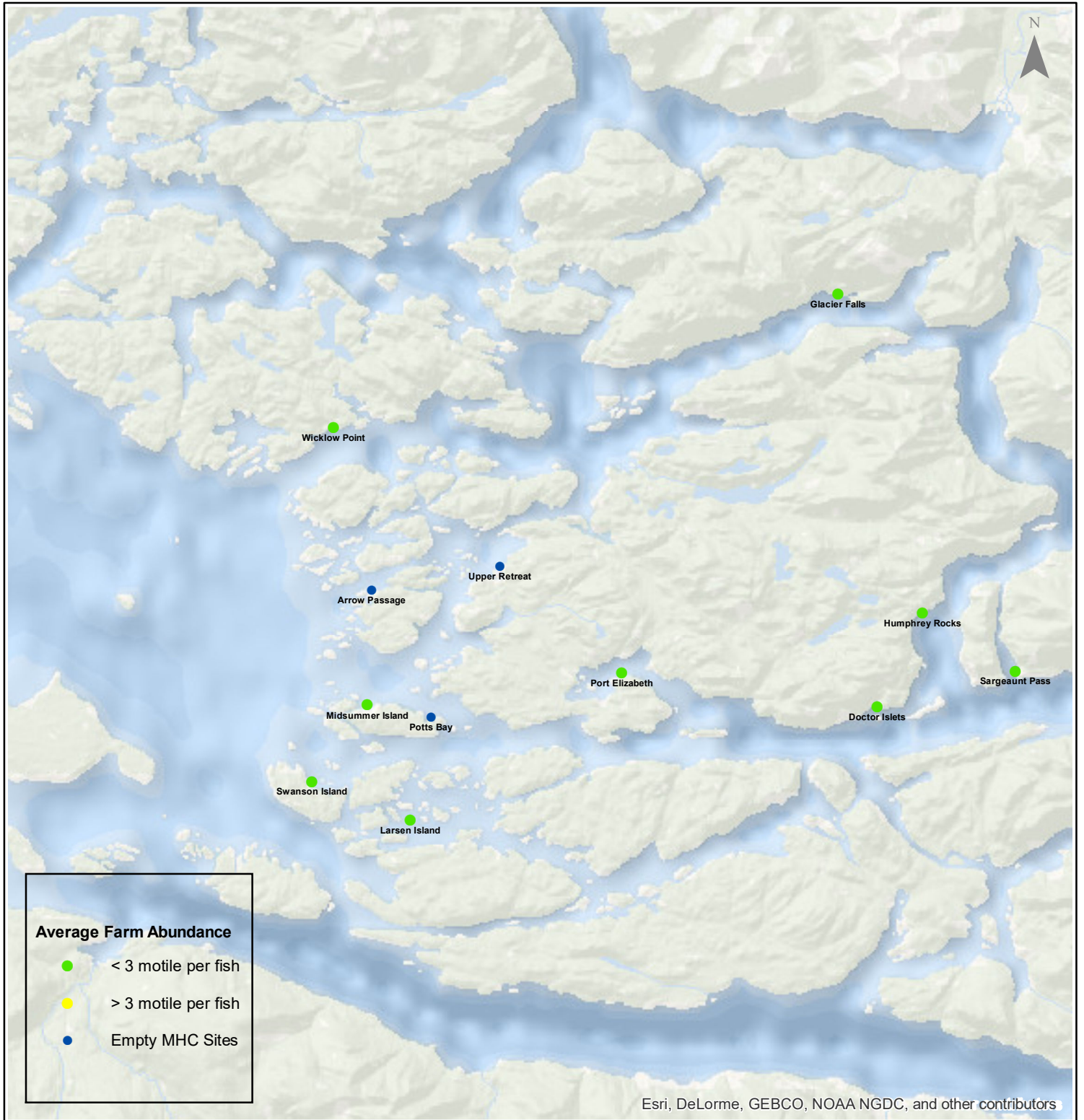
Date: 15 Jun 2018

# Sea Lice Monitoring - Average Farm Abundance

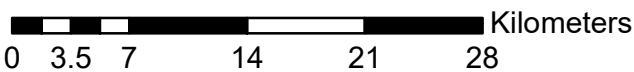
## Broughton - May 2018



1:450,000



Esri, DeLorme, GEBCO, NOAA NGDC, and other contributors



Coordinate System: WGS 1984 Web Mercator Auxiliary Sphere

Author: BC Centre for Aquatic Health Sciences Society

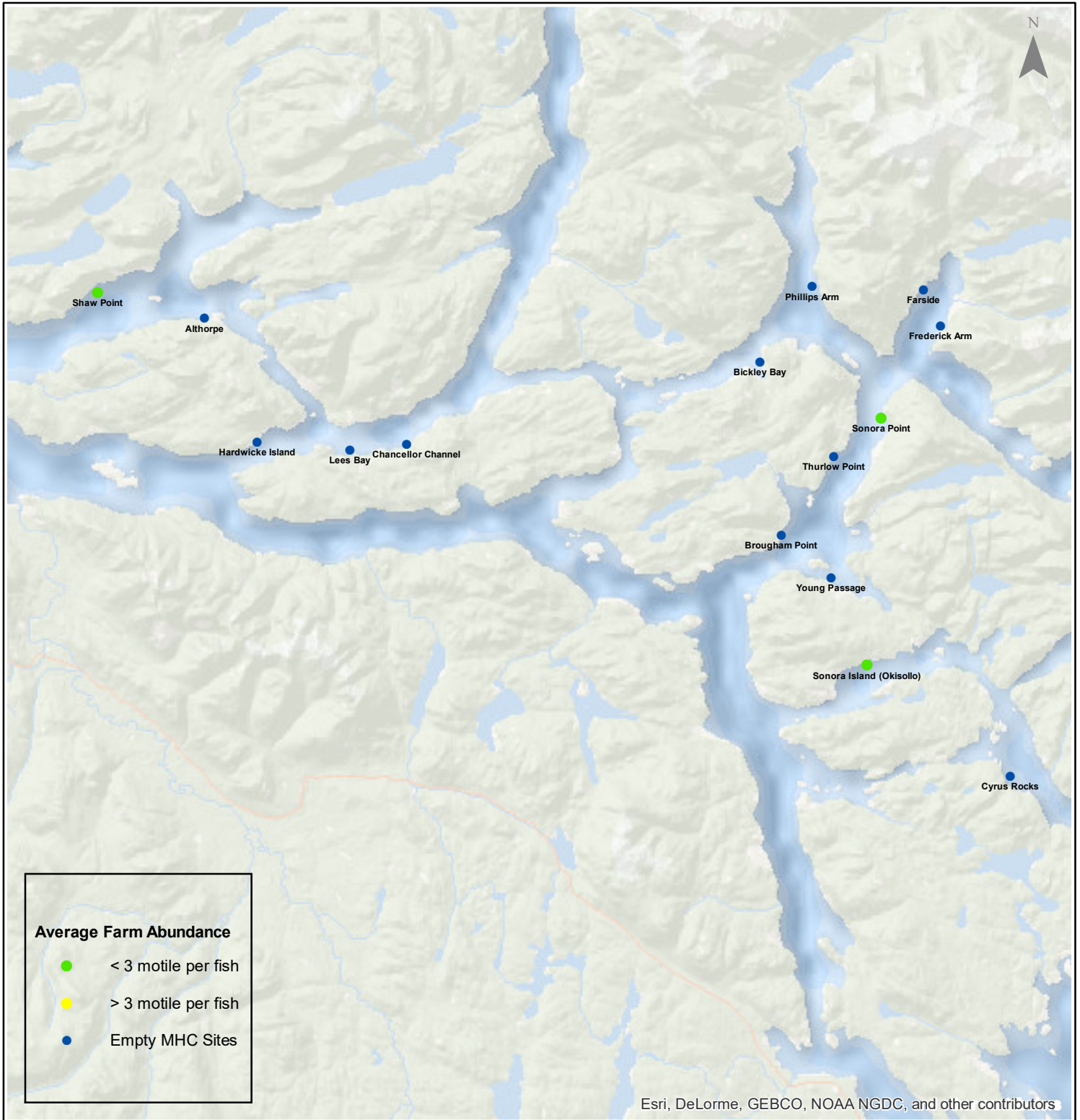
Date: 15 Jun 2018

# Sea Lice Monitoring - Average Farm Abundance

## Campbell River - May 2018



1:450,000



Esri, DeLorme, GEBCO, NOAA NGDC, and other contributors

Coordinate System: WGS 1984 Web Mercator Auxiliary Sphere

Author: BC Centre for Aquatic Health Sciences Society

Date: 15 Jun 2018

0 3.5 7 14 21 28 Kilometers

Sea Lice Monitoring - Average Farm Abundance

SiteArea	Facility	Date Sampled	Motile L. salmonis	Memo	EMB* Rx Start Date	H2O2** Rx Start Date
Broughton	Arrow Passage	5 2018		Fallow		
Broughton	Doctor Islets	5 2018	0.00			
Broughton	Glacier Falls	5 2018	0.17		26-Feb-18	
Broughton	Humphrey Rocks	5 2018	0.11		25-Feb-18	
Broughton	Larsen Island	5 2018	0.58			
Broughton	Midsummer Island	5 2018	0.09		25-Feb-18	
Broughton	Port Elizabeth	5 2018	1.18			
Broughton	Potts Bay	5 2018		Fallow		
Broughton	Sargeaunt Pass	5 2018	0.07		25-Feb-18	
Broughton	Swanson Island	5 2018	0.15			
Broughton	Upper Retreat	5 2018		Fallow		
Broughton	Wicklow Point	5 2018	0.01			
Campbell River	Aithorpe	5 2018		Fallow		
Campbell River	Bickley Bay	5 2018		Fallow		
Campbell River	Brougham Point	5 2018		Fallow		
Campbell River	Chancellor Channel	5 2018		Fallow		
Campbell River	Cyrus Rocks	5 2018		Fallow		
Campbell River	Dunsterville	5 2018		Fallow		
Campbell River	Egerton Creek	5 2018		Fallow		
Campbell River	Farside	5 2018		Fallow		
Campbell River	Frederick Arm	5 2018		Fallow		
Campbell River	Hardwicke Island	5 2018		Fallow		
Campbell River	Lees Bay	5 2018		Fallow		
Campbell River	Phillips Arm	5 2018		Fish transferred from Bell starting May 28, 2018		
Campbell River	Read Island	5 2018		Fallow		
Campbell River	Shaw Point	5 2018	0.45			
Campbell River	Sonora Island (Okisollo)	5 2018	0.46		19-Nov-17	11-Aug-17
Campbell River	Sonora Point	5 2018	0.19	Fish transferred from Port Elizabeth starting May 8. H2O2 treatment.		8-May-18
Campbell River	Thurlow Point	5 2018		Fallow		
Campbell River	Young Passage	5 2018		Fallow		
Klemtu	Alexander Inlet	5 2018	2.13			3-Mar-18
Klemtu	Cougar Bay	5 2018		Fallow		
Klemtu	Goat Cove	5 2018	1.20			16-Mar-18
Klemtu	Kid Bay	5 2018	0.13			29-Mar-18
Klemtu	Lime Point	5 2018		Fallow		
Klemtu	Sheep Pass	5 2018		Fallow		
Port Hardy	Bell Island	5 2018	0.14	H2O2 prior to transfer to Phillips Arm		28-May-18
Port Hardy	Doyle Island	5 2018	0.68			
Port Hardy	Duncan Island	5 2018		Fallow		
Port Hardy	Ghi ya. Bull Harbour	5 2018	0.54		25-Oct-17	25-Jul-17
Port Hardy	Hardy Bay	5 2018		Fallow		
Port Hardy	Marsh Bay	5 2018	0.18			14-Apr-18
Port Hardy	Raynor	5 2018		Fallow		
Port Hardy	Robertson Island	5 2018		Fallow		
Port Hardy	Shelter Bay	5 2018	1.06			
Port Hardy	Shelter Pass	5 2018	0.38			
Port Hardy	Wanx Talis, Heath Bay	5 2018	0.15		19-Dec-17	20-Sep-17
Quatsino	Cleagh Creek	5 2018		Fallow		
Quatsino	Koskimo	5 2018		Fallow		
Quatsino	Mahatta East	5 2018	0.56		12-Nov-17	25-Apr-17
Quatsino	Mahatta West	5 2018		Fallow		
Quatsino	Monday Rocks	5 2018	0.96		18-Nov-17	7-May-17
Quatsino	Thorpe Point	5 2018		Fallow		

\*Emamectin Benzoate (Brand Name SLICE)

\*\* Hydrogen Peroxide (Brand Name Interlox Paramove 50)

