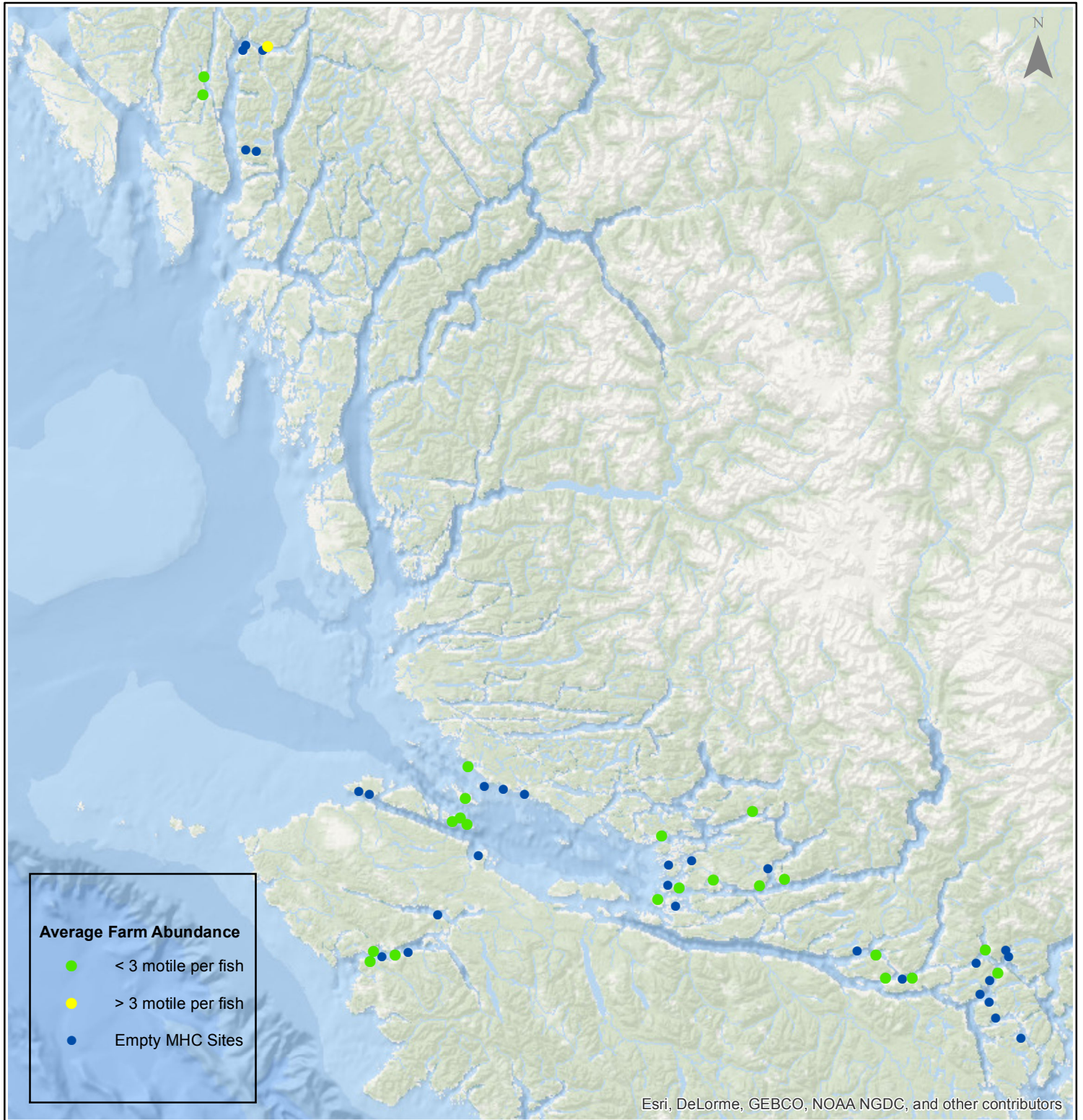


Sea Lice Monitoring - Average Farm Abundance

All Sites - May 2017



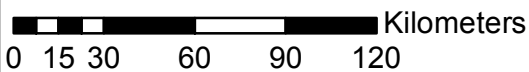
1:2,500,000



Average Farm Abundance

- < 3 motile per fish
- > 3 motile per fish
- Empty MHC Sites

Esri, DeLorme, GEBCO, NOAA NGDC, and other contributors



Coordinate System: WGS 1984 Web Mercator Auxiliary Sphere

Author: BC Centre for Aquatic Health Sciences Society

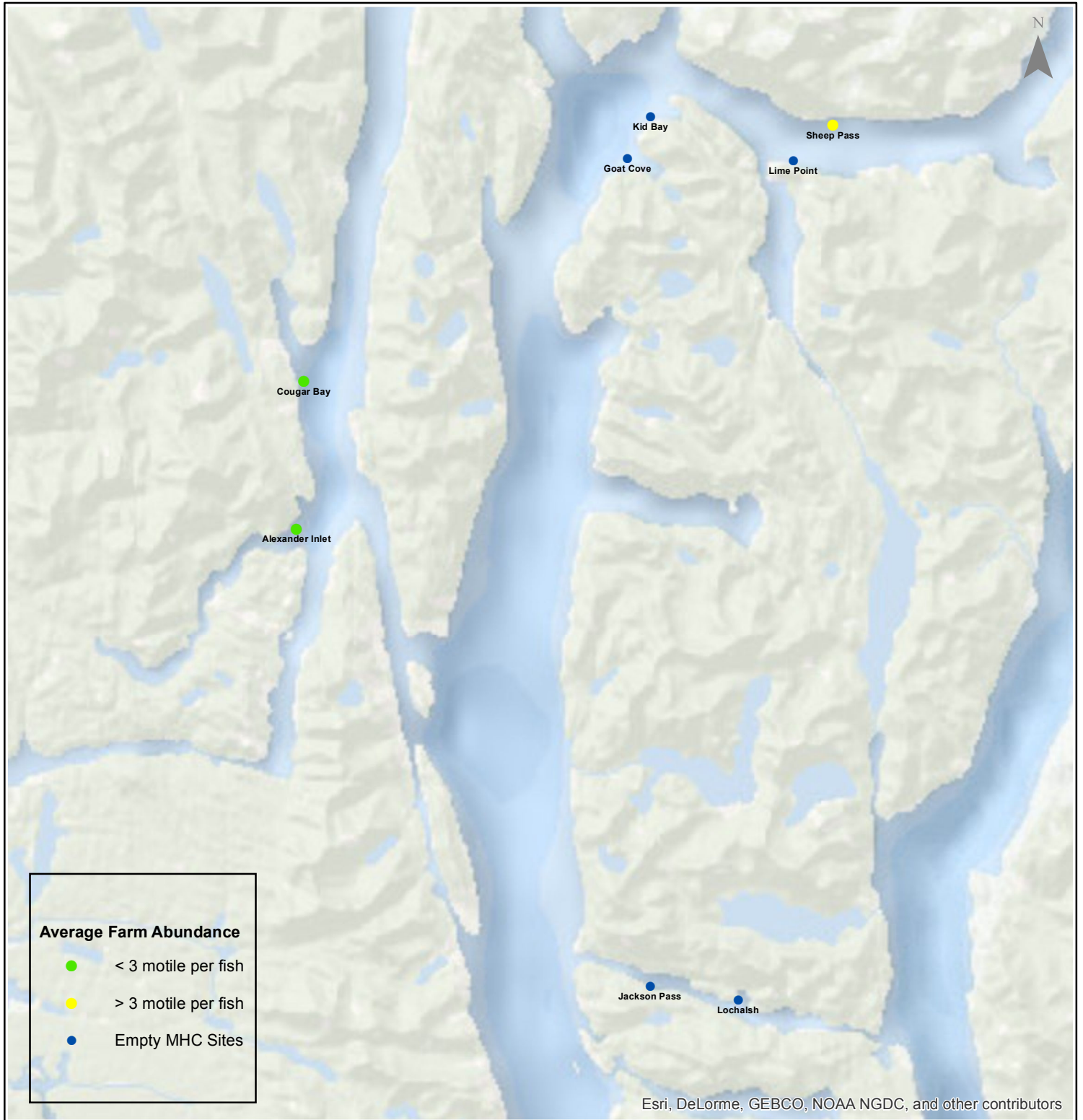
Date: 06/15/2017

Sea Lice Monitoring - Average Farm Abundance

Klemtu - May 2017



1:300,000



0 2.25 4.5 9 13.5 18 Kilometers

Coordinate System: WGS 1984 Web Mercator Auxiliary Sphere

Author: BC Centre for Aquatic Health Sciences Society

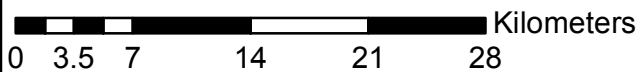
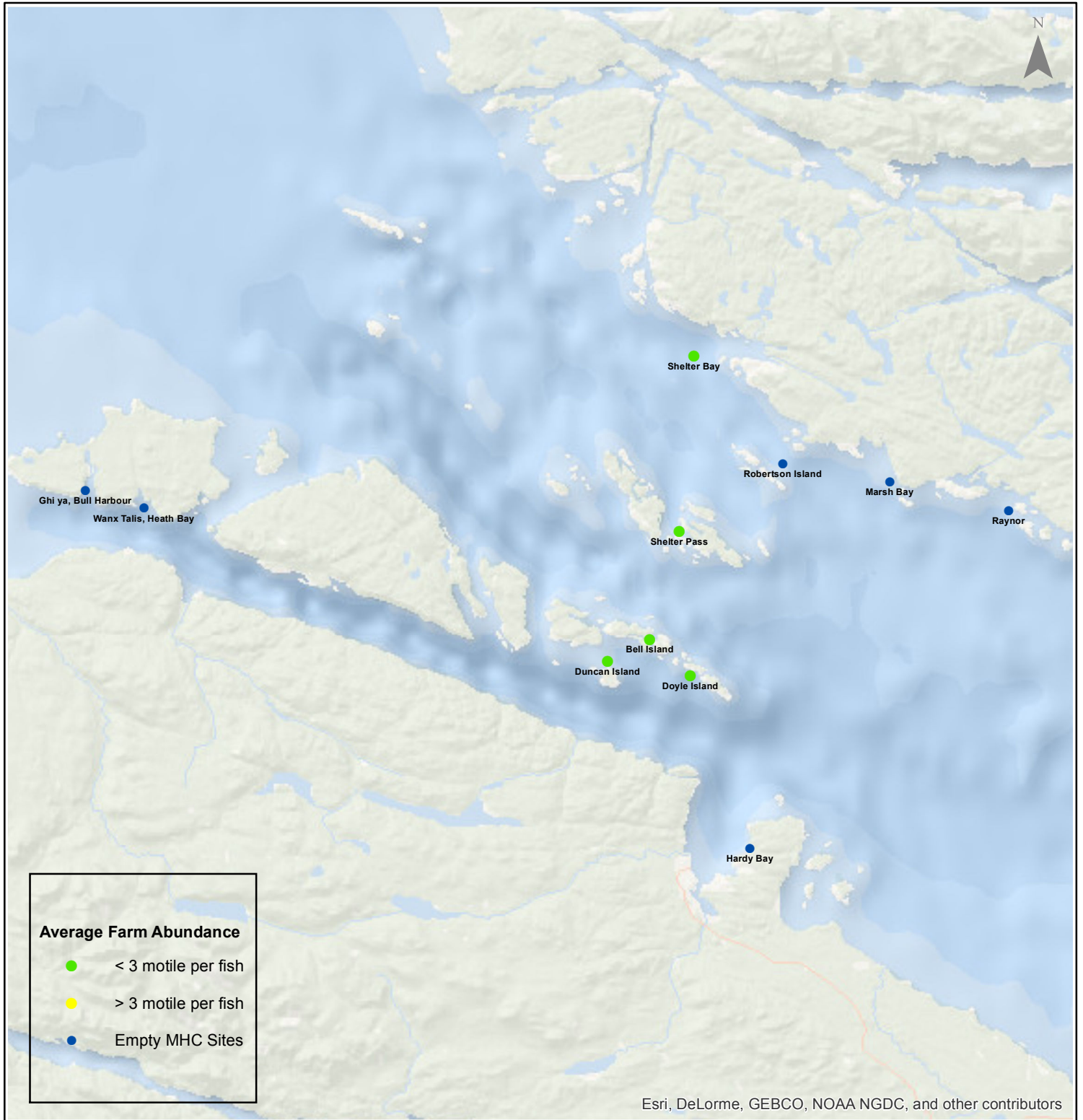
Date: 06/15/2017

Sea Lice Monitoring - Average Farm Abundance

Port Hardy - May 2017



1:450,000



Coordinate System: WGS 1984 Web Mercator Auxiliary Sphere

Author: BC Centre for Aquatic Health Sciences Society

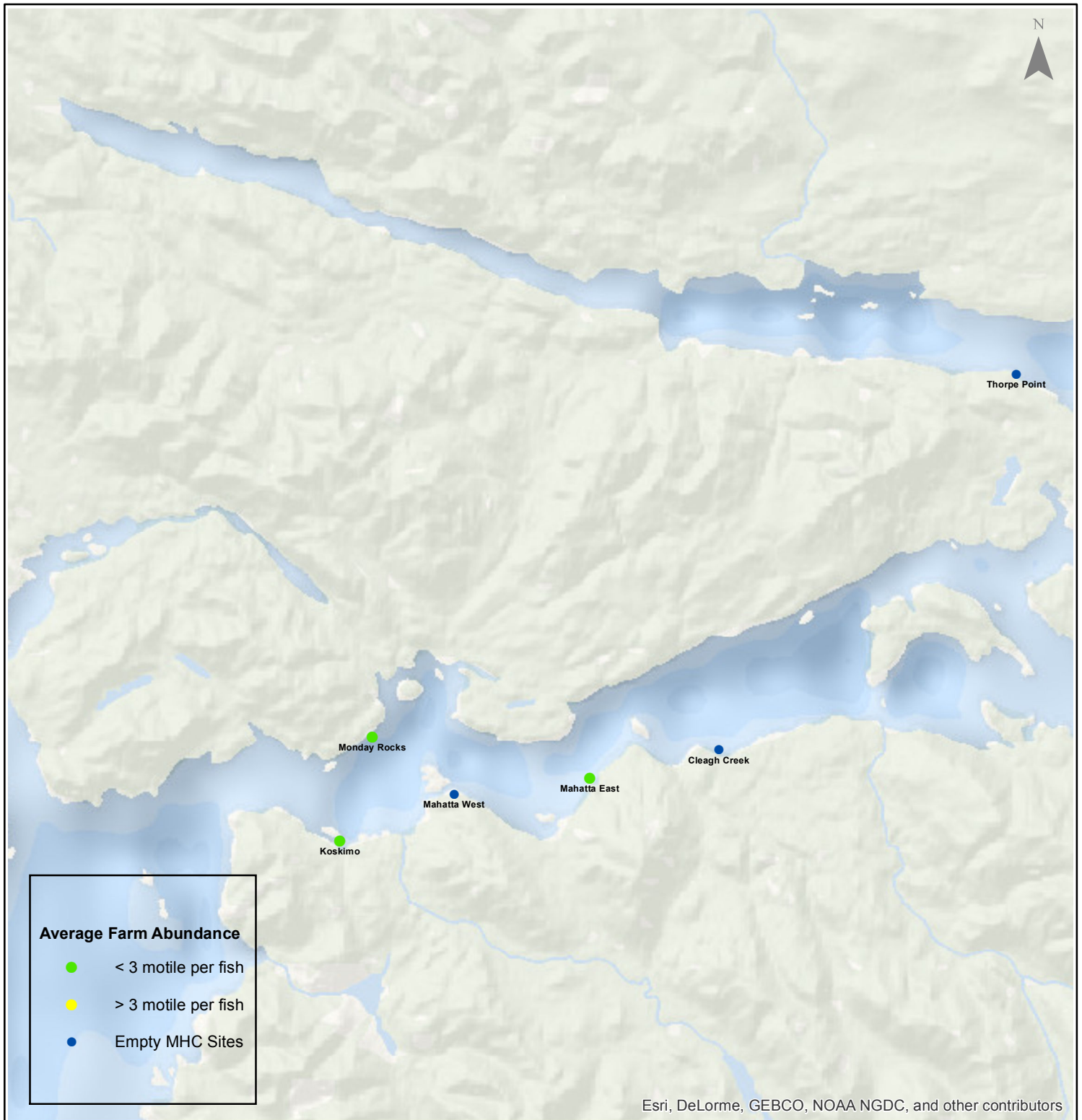
Date: 06/15/2017

Sea Lice Monitoring - Average Farm Abundance

Quatsino - May 2017



1:250,000



Esri, DeLorme, GEBCO, NOAA NGDC, and other contributors

Kilometers

Coordinate System: WGS 1984 Web Mercator Auxiliary Sphere

Author: BC Centre for Aquatic Health Sciences Society

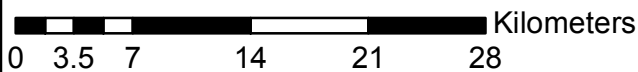
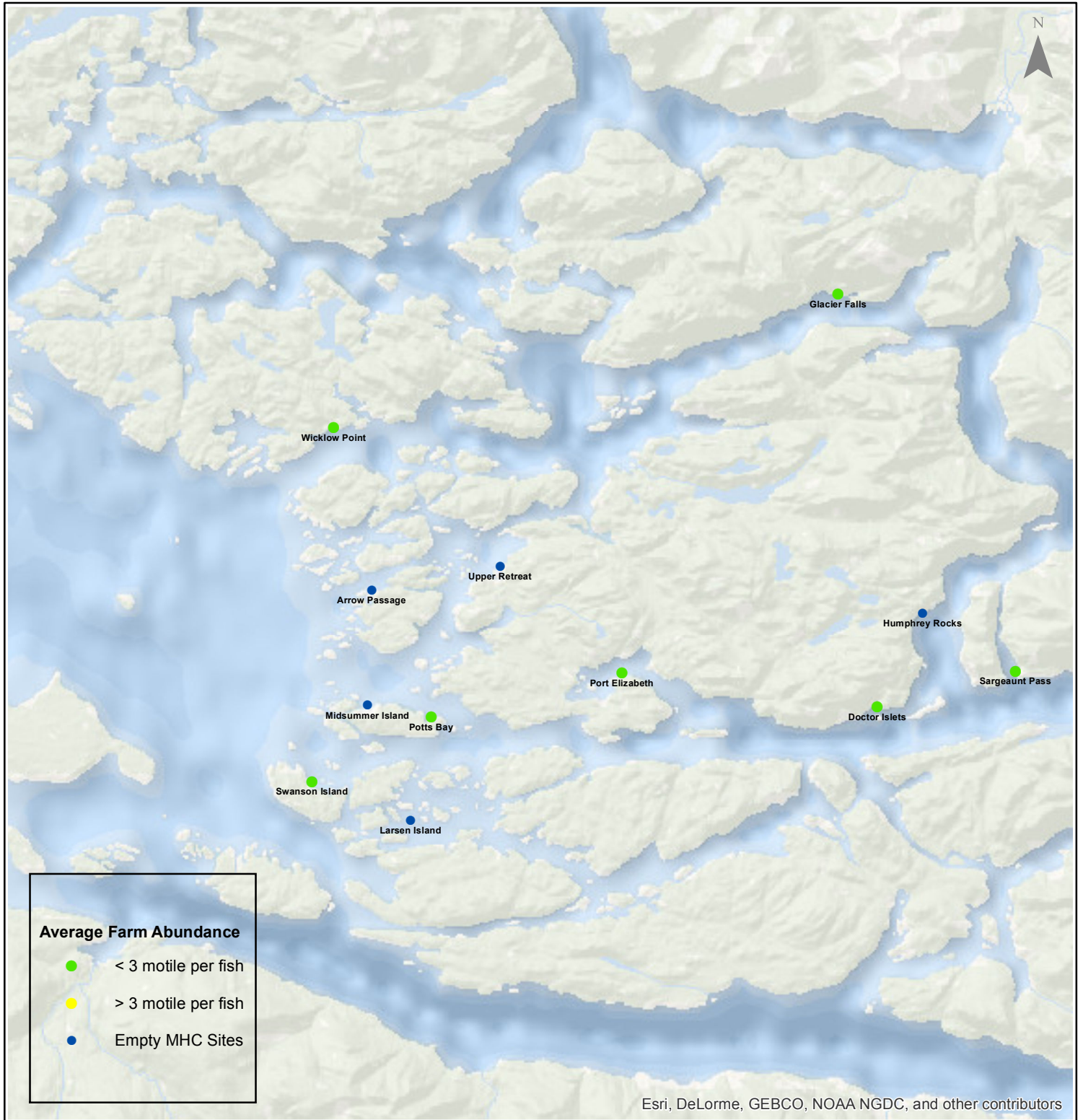
Date: 06/15/2017

Sea Lice Monitoring - Average Farm Abundance

Broughton - May 2017



1:450,000



Coordinate System: WGS 1984 Web Mercator Auxiliary Sphere

Author: BC Centre for Aquatic Health Sciences Society

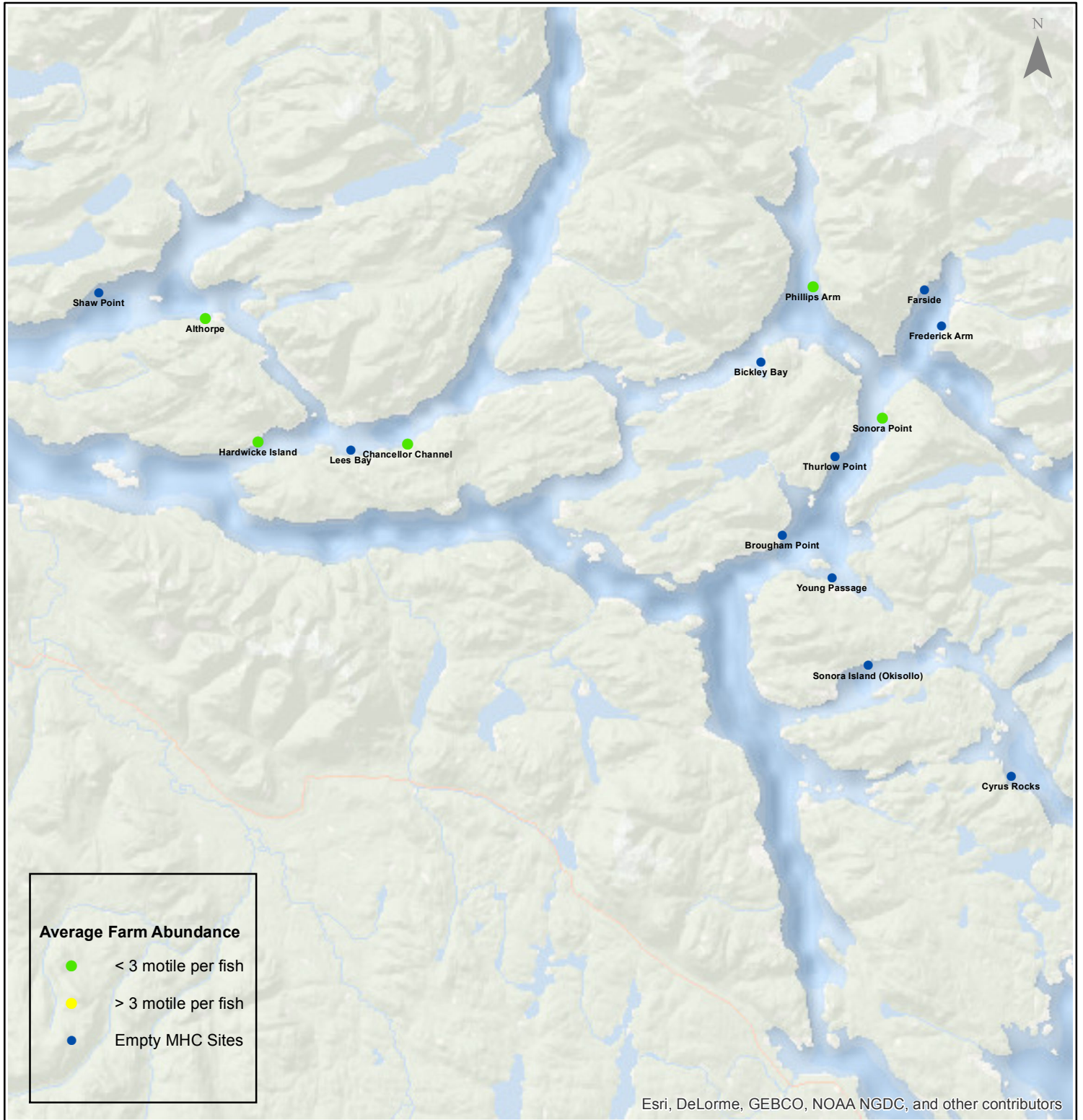
Date: 06/15/2017

Sea Lice Monitoring - Average Farm Abundance

Campbell River - May 2017



1:450,000



Esri, DeLorme, GEBCO, NOAA NGDC, and other contributors

0 3.5 7 14 21 28 Kilometers

Coordinate System: WGS 1984 Web Mercator Auxiliary Sphere

Author: BC Centre for Aquatic Health Sciences Society

Date: 06/15/2017

Sea Lice Monitoring - Average Farm Abundance

SiteArea	Facility	Date Sampled	Motile L. salmonis	Memo	EMB* Rx Start Date	H2O2** Rx Start Date
Broughton	Arrow Passage	5 2017		Fallow		
Broughton	Doctor Islets	5 2017	0.16		11-Feb-17	
Broughton	Glacier Falls	5 2017	0.26			
Broughton	Humphrey Rocks	5 2017		Smolt entry starting May 16, 2017		
Broughton	Larsen Island	5 2017		Fallow		
Broughton	Midsummer Island	5 2017		Fallow as of May 24, 2017	25-Jan-17	
Broughton	Port Elizabeth	5 2017	0.40			
Broughton	Potts Bay	5 2017	0.06		1-Feb-17	
Broughton	Sargeaunt Pass	5 2017	0.20			
Broughton	Swanson Island	5 2017	0.08		17-Jan-17	
Broughton	Upper Retreat	5 2017		Fallow		
Broughton	Wicklow Point	5 2017	0.28		3-Jan-17	
Campbell River	Althorpe	5 2017	0.19		19-Jan-17	
Campbell River	Bickley Bay	5 2017		Fallow		
Campbell River	Brougham Point	5 2017		Fallow		
Campbell River	Chancellor Channel	5 2017	1.03	Fallow as of May 24, 2017	21-Nov-16	
Campbell River	Cyrus Rocks	5 2017		Fallow		
Campbell River	Dunsterville	5 2017		Fallow		
Campbell River	Egerton Creek	5 2017		Fallow		
Campbell River	Farside	5 2017		Fallow		
Campbell River	Frederick Arm	5 2017		Fallow		
Campbell River	Hardwicke Island	5 2017	1.61		21-Nov-16	
Campbell River	Lees Bay	5 2017		Fallow		
Campbell River	Phillips Arm	5 2017	0.43		5-Dec-16	
Campbell River	Read Island	5 2017		Fallow		
Campbell River	Shaw Point	5 2017		Fallow		
Campbell River	Sonora Island (Okisollo)	5 2017		Fallow		
Campbell River	Sonora Point	5 2017	0.28		24-Dec-16	5-Aug-16
Campbell River	Thurlow Point	5 2017		Fallow		
Campbell River	Young Passage	5 2017		Fallow		
Klemtu	Alexander Inlet	5 2017	0.89			7-Mar-17
Klemtu	Cougar Bay	5 2017	0.13			
Klemtu	Goat Cove	5 2017		Fallow		
Klemtu	Jackson Pass	5 2017		Fallow		
Klemtu	Kid Bay	5 2017		Fallow		
Klemtu	Lime Point	5 2017		Fallow		
Klemtu	Lochalsh	5 2017		Fallow		
Klemtu	Sheep Pass	5 2017	3.27	SLICE Treatment planned for the middle of June.	22-Jun-16	25-Jan-17
Port Hardy	Bell Island	5 2017	0.44			
Port Hardy	Doyle Island	5 2017	0.34		2-Mar-17	20-Nov-16
Port Hardy	Duncan Island	5 2017	0.58		25-Feb-17	27-Sep-16
Port Hardy	Ghi ya, Bull Harbour	5 2017		Fallow		
Port Hardy	Hardy Bay	5 2017		Fallow		
Port Hardy	Marsh Bay	5 2017		Fallow		
Port Hardy	Raynor	5 2017		Fallow		
Port Hardy	Robertson Island	5 2017		Fallow		
Port Hardy	Shelter Bay	5 2017	0.01			
Port Hardy	Shelter Pass	5 2017	0.04		2-Mar-17	
Port Hardy	Wanx Talis, Heath Bay	5 2017		Fallow		
Quatsino	Cleagh Creek	5 2017		Fallow		
Quatsino	Koskimo	5 2017	0.09	H2O2		21-May-17
Quatsino	Mahatta East	5 2017	0.00			25-Apr-17
Quatsino	Mahatta West	5 2017		Fallow		
Quatsino	Monday Rocks	5 2017	0.11	H2O2		7-May-17
Quatsino	Thorpe Point	5 2017		Fallow		

*Emamectin Benzoate (Brand Name SLICE)

** Hydrogen Peroxide (Brand Name Interlox Paramove 50)