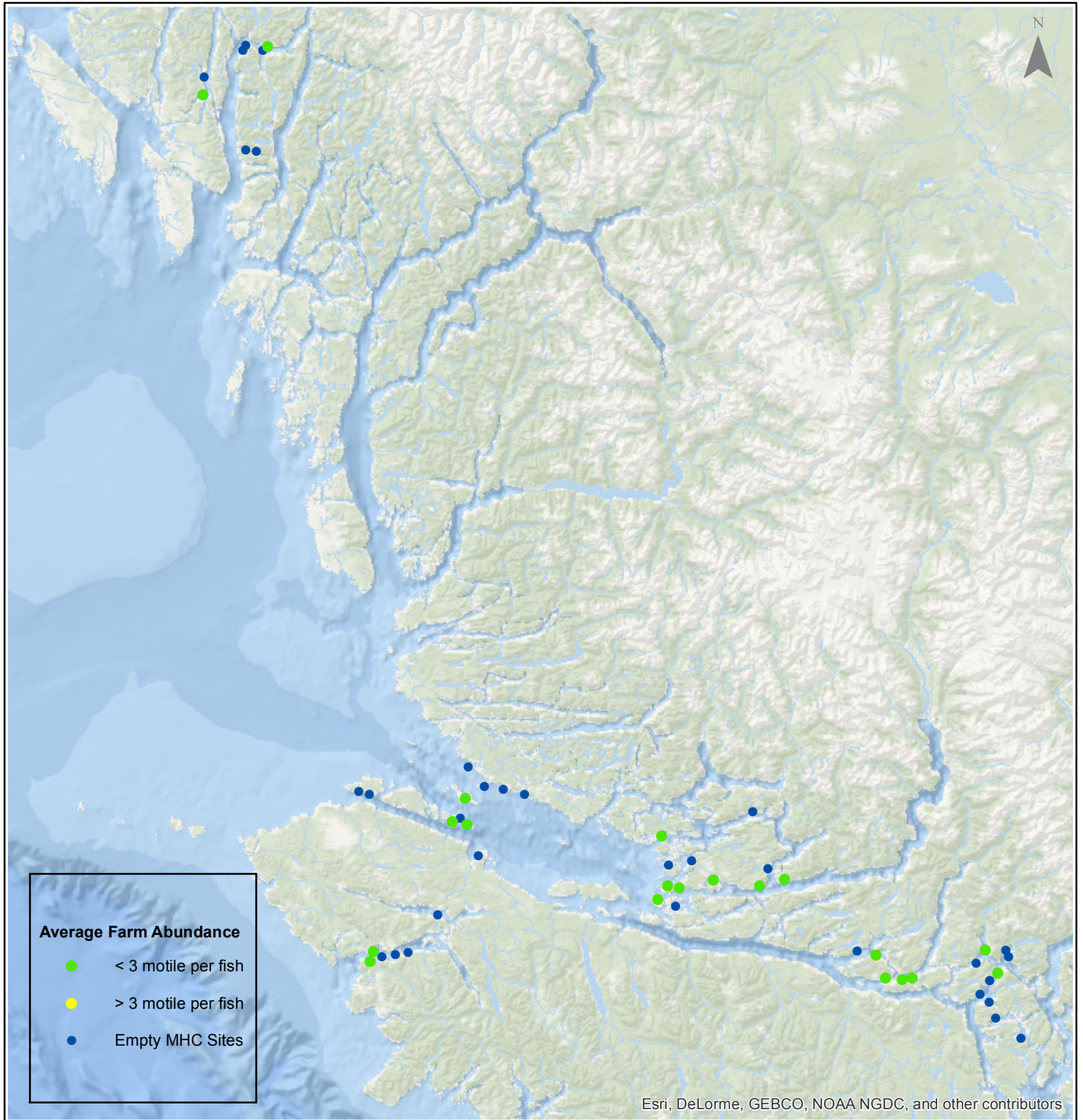


# Sea Lice Monitoring - Average Farm Abundance

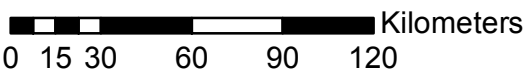
## All Sites - March 2017



1:2,500,000



Esri, DeLorme, GEBCO, NOAA NGDC, and other contributors



Coordinate System: WGS 1984 Web Mercator Auxiliary Sphere

Author: BC Centre for Aquatic Health Sciences Society

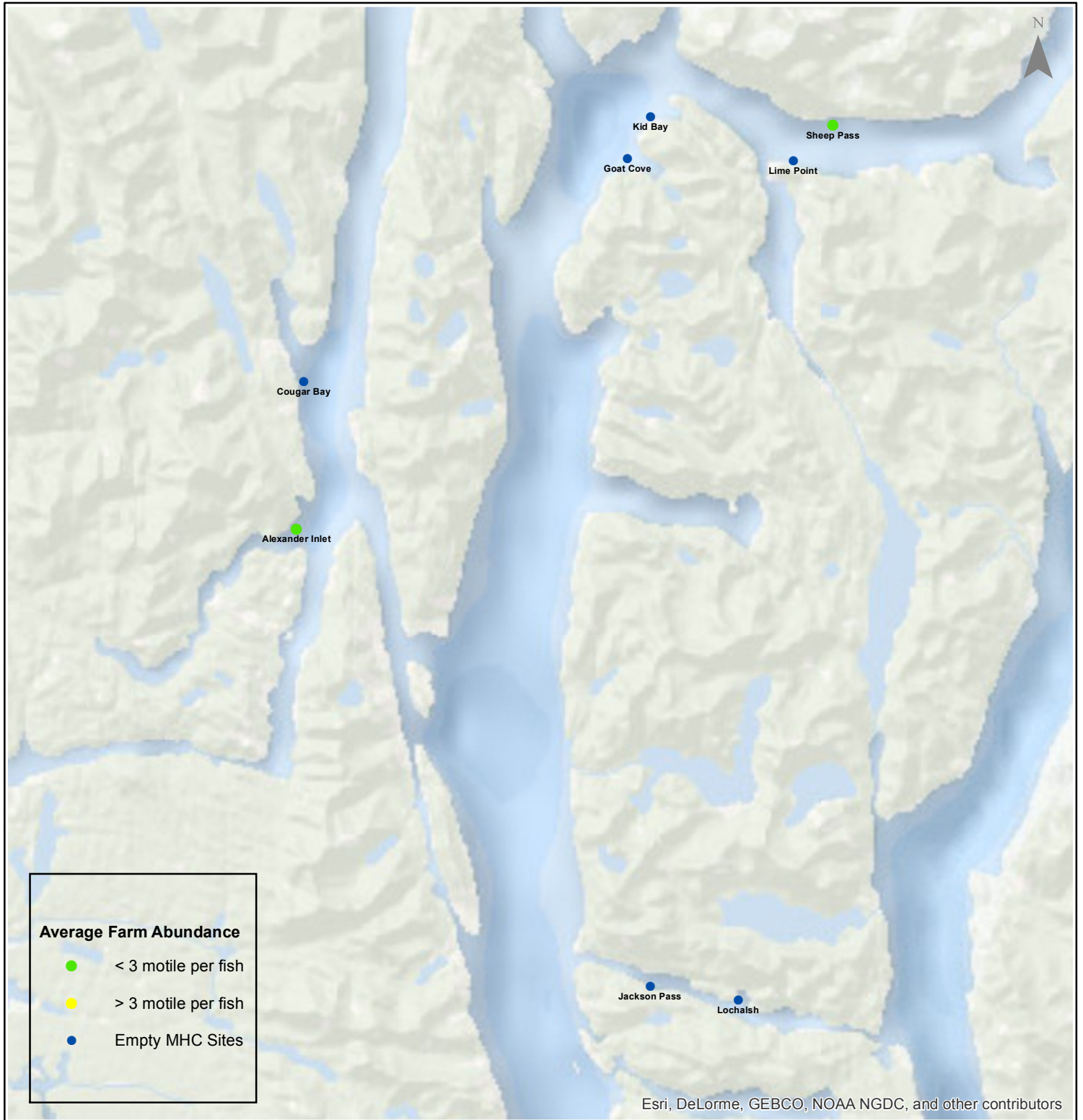
Date: 04/13/2017

# Sea Lice Monitoring - Average Farm Abundance

## *Klemtu - March 2017*



1:300,000



Esri, DeLorme, GEBCO, NOAA NGDC, and other contributors

0 2.25 4.5 9 13.5 18 Kilometers

Coordinate System: WGS 1984 Web Mercator Auxiliary Sphere

Author: BC Centre for Aquatic Health Sciences Society

Date: 04/13/2017

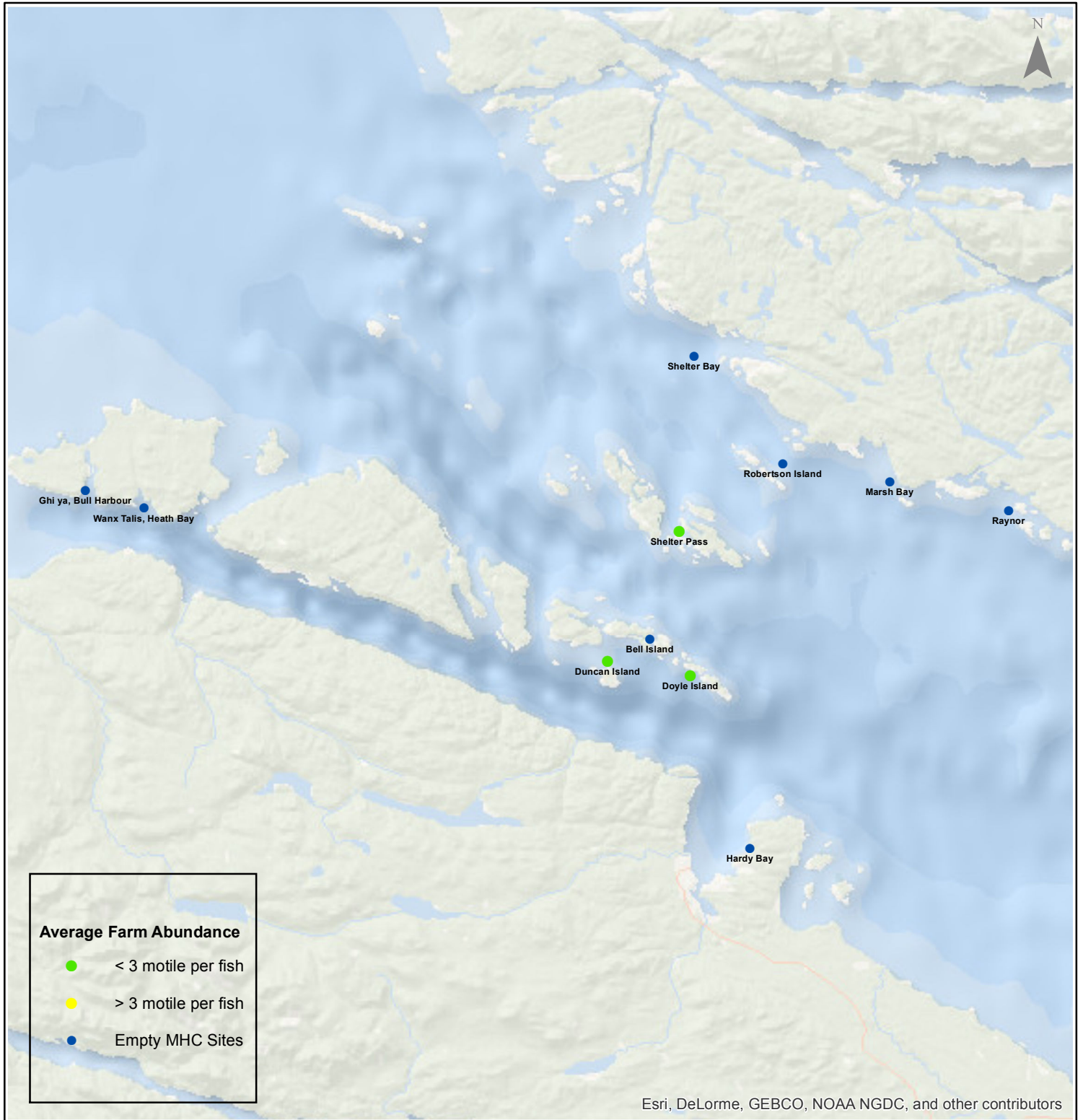


# Sea Lice Monitoring - Average Farm Abundance

## Port Hardy - March 2017



1:450,000



Esri, DeLorme, GEBCO, NOAA NGDC, and other contributors

0 3.5 7 14 21 28 Kilometers

Coordinate System: WGS 1984 Web Mercator Auxiliary Sphere

Author: BC Centre for Aquatic Health Sciences Society

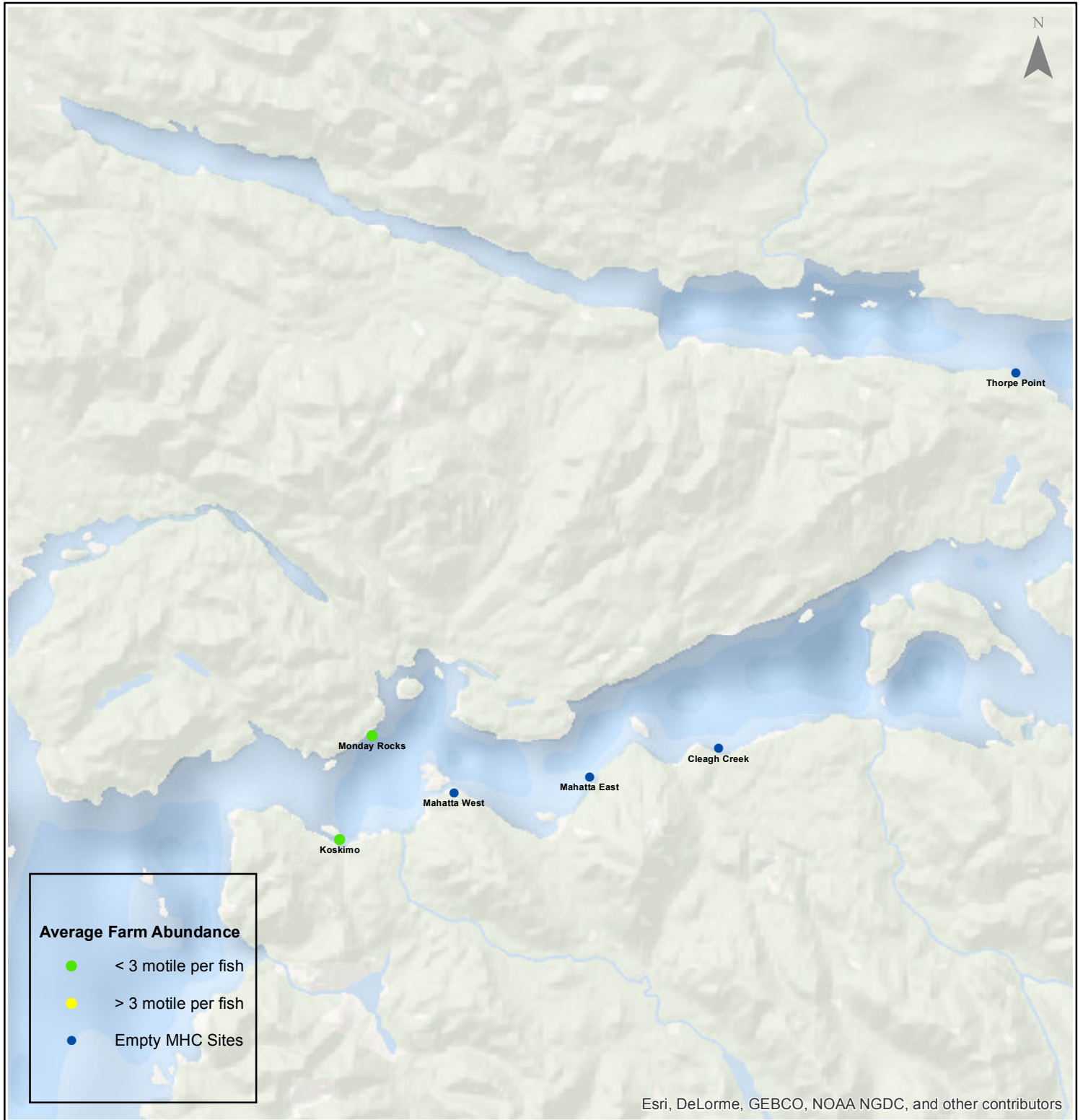
Date: 04/13/2017

# Sea Lice Monitoring - Average Farm Abundance

## Quatsino - March 2017



1:250,000



Esri, DeLorme, GEBCO, NOAA NGDC, and other contributors

Kilometers

Coordinate System: WGS 1984 Web Mercator Auxiliary Sphere

Author: BC Centre for Aquatic Health Sciences Society

Date: 04/13/2017

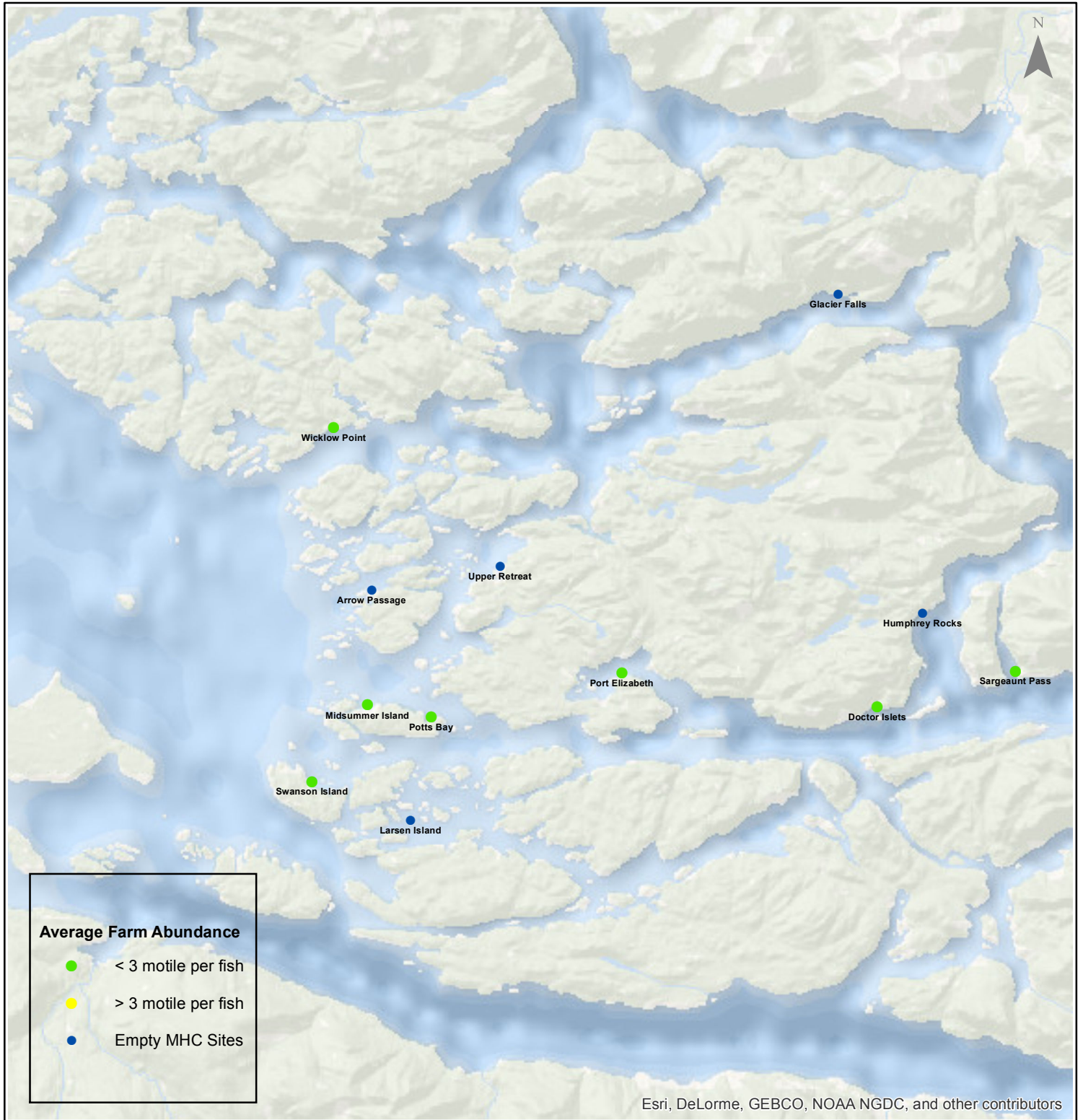


# Sea Lice Monitoring - Average Farm Abundance

## Broughton - March 2017



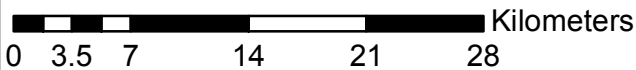
1:450,000



### Average Farm Abundance

- < 3 motile per fish
- > 3 motile per fish
- Empty MHC Sites

Esri, DeLorme, GEBCO, NOAA NGDC, and other contributors



Coordinate System: WGS 1984 Web Mercator Auxiliary Sphere

Author: BC Centre for Aquatic Health Sciences Society

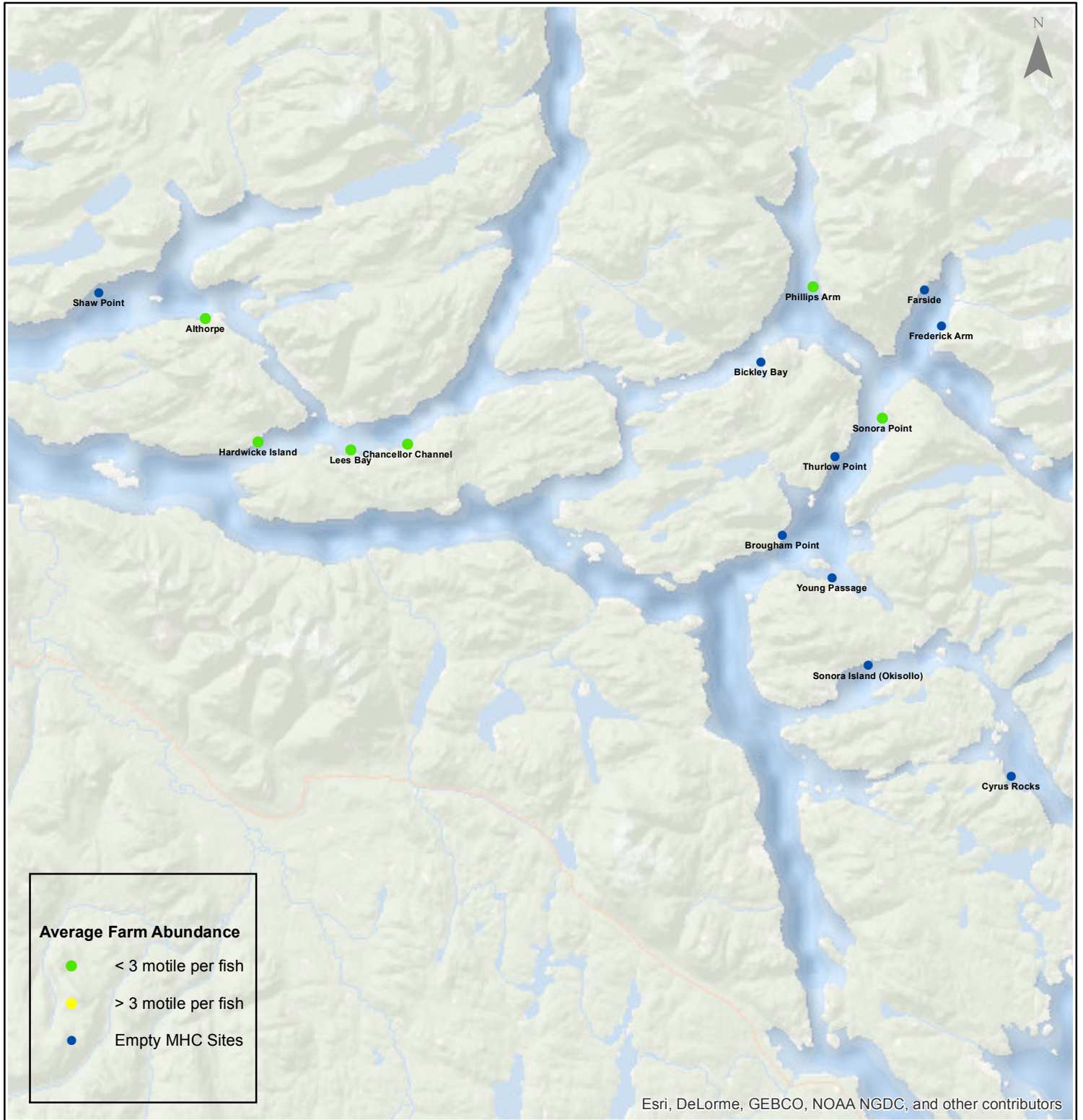
Date: 04/13/2017

# Sea Lice Monitoring - Average Farm Abundance

## Campbell River - March 2017



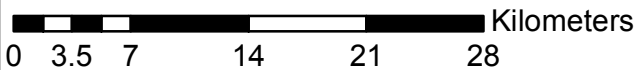
1:450,000



**Average Farm Abundance**

- < 3 motile per fish
- > 3 motile per fish
- Empty MHC Sites

Esri, DeLorme, GEBCO, NOAA NGDC, and other contributors



Coordinate System: WGS 1984 Web Mercator Auxiliary Sphere

Author: BC Centre for Aquatic Health Sciences Society

Date: 04/13/2017



Sea Lice Monitoring - Average Farm Abundance

SiteArea	Facility	Date Sampled	Motile L. salmonis	Memo	EMB* Rx Start Date	H202** Rx Start Date
Broughton	Arrow Passage	3 2017		Fallow		
Broughton	Doctor Islets	3 2017	0.46		11-Feb-17	
Broughton	Glacier Falls	3 2017		smolt entry starting March 23, 2017		
Broughton	Humphrey Rocks	3 2017		Fallow		
Broughton	Larsen Island	3 2017		Fallow		
Broughton	Midsummer Island	3 2017	1.18		25-Jan-17	
Broughton	Port Elizabeth	3 2017	0.17			
Broughton	Potts Bay	3 2017	0.63		1-Feb-17	
Broughton	Sargeaunt Pass	3 2017	0.08			
Broughton	Swanson Island	3 2017	0.14		17-Jan-17	
Broughton	Upper Retreat	3 2017		Fallow		
Broughton	Wicklow Point	3 2017	0.29		3-Jan-17	
Campbell River	Althorpe	3 2017	0.15		19-Jan-17	
Campbell River	Bickley Bay	3 2017		Fallow		
Campbell River	Brougham Point	3 2017		Fallow		
Campbell River	Chancellor Channel	3 2017	0.39		21-Nov-16	
Campbell River	Cyrus Rocks	3 2017		Fallow		
Campbell River	Dunsterville	3 2017		Fallow		
Campbell River	Egerton Creek	3 2017		Fallow		
Campbell River	Farside	3 2017		Fallow		
Campbell River	Frederick Arm	3 2017		Fallow		
Campbell River	Hardwicke Island	3 2017	0.24		21-Nov-16	
Campbell River	Lees Bay	3 2017	0.28		20-Nov-16	10-May-16
Campbell River	Phillips Arm	3 2017	0.25		5-Dec-16	
Campbell River	Read Island	3 2017		Fallow		
Campbell River	Shaw Point	3 2017		Fallow		
Campbell River	Sonora Island (Okisollo)	3 2017		Fallow		
Campbell River	Sonora Point	3 2017	0.35		24-Dec-16	5-Aug-16
Campbell River	Thurlow Point	3 2017		Fallow		
Campbell River	Young Passage	3 2017		Fallow		
Klemtu	Alexander Inlet	3 2017	0.36	H202		7-Mar-17
Klemtu	Cougar Bay	3 2017		Fallow		
Klemtu	Goat Cove	3 2017		Fallow		
Klemtu	Jackson Pass	3 2017		Fallow		
Klemtu	Kid Bay	3 2017		Fallow		
Klemtu	Lime Point	3 2017		Fallow		
Klemtu	Lochalsh	3 2017		Fallow		
Klemtu	Sheep Pass	3 2017	0.67		22-Jun-16	25-Jan-17
Port Hardy	Bell Island	3 2017		smolt entry starting March 10, 2017		
Port Hardy	Doyle Island	3 2017	2.69	SLICE	2-Mar-17	20-Nov-16
Port Hardy	Duncan Island	3 2017	1.89		25-Feb-17	27-Sep-16
Port Hardy	Ghi ya, Bull Harbour	3 2017		site fallow as of March 27, 2017	16-Jul-16	21-Mar-16
Port Hardy	Hardy Bay	3 2017		Fallow		
Port Hardy	Marsh Bay	3 2017		Fallow		
Port Hardy	Raynor	3 2017		Fallow		
Port Hardy	Robertson Island	3 2017		Fallow		
Port Hardy	Shelter Bay	3 2017		Fallow		
Port Hardy	Shelter Pass	3 2017	1.32	SLICE	2-Mar-17	
Port Hardy	Wanx Talis, Heath Bay	3 2017		Fallow		
Quatsino	Cleagh Creek	3 2017		Fallow		
Quatsino	Koskimo	3 2017	0.21			
Quatsino	Mahatta East	3 2017		Fallow		
Quatsino	Mahatta West	3 2017		Fallow		
Quatsino	Monday Rocks	3 2017	0.23			
Quatsino	Thorpe Point	3 2017		Fallow		

\*Emamectin Benzoate (Brand Name *SLICE*)

\*\* Hydrogen Peroxide (Brand Name *Interox Paramove 50*)

