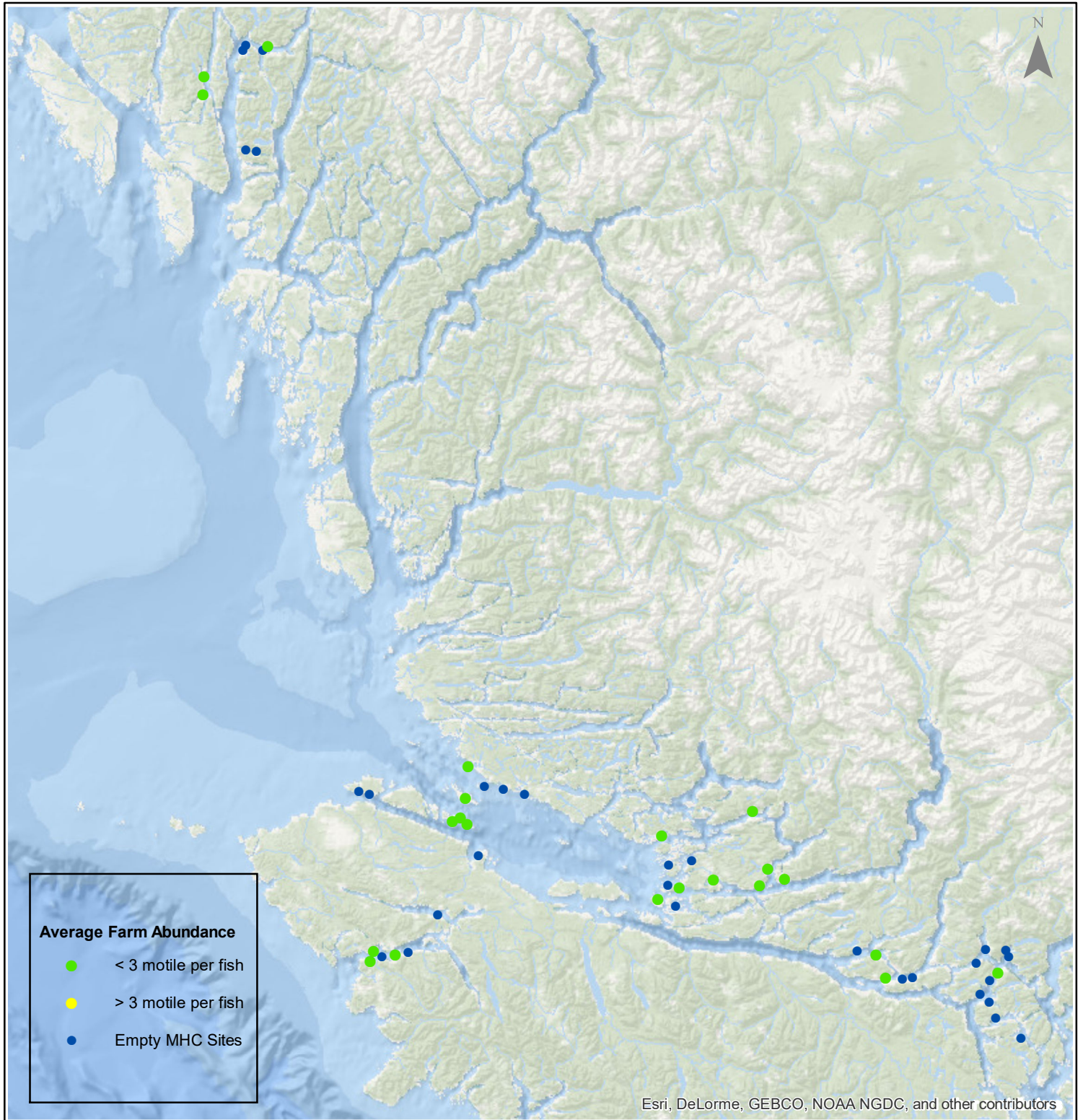


# Sea Lice Monitoring - Average Farm Abundance

## All Sites - July 2017



1:2,500,000



Esri, DeLorme, GEBCO, NOAA NGDC, and other contributors

Coordinate System: WGS 1984 Web Mercator Auxiliary Sphere

Author: BC Centre for Aquatic Health Sciences Society

Date: 08/14/2017

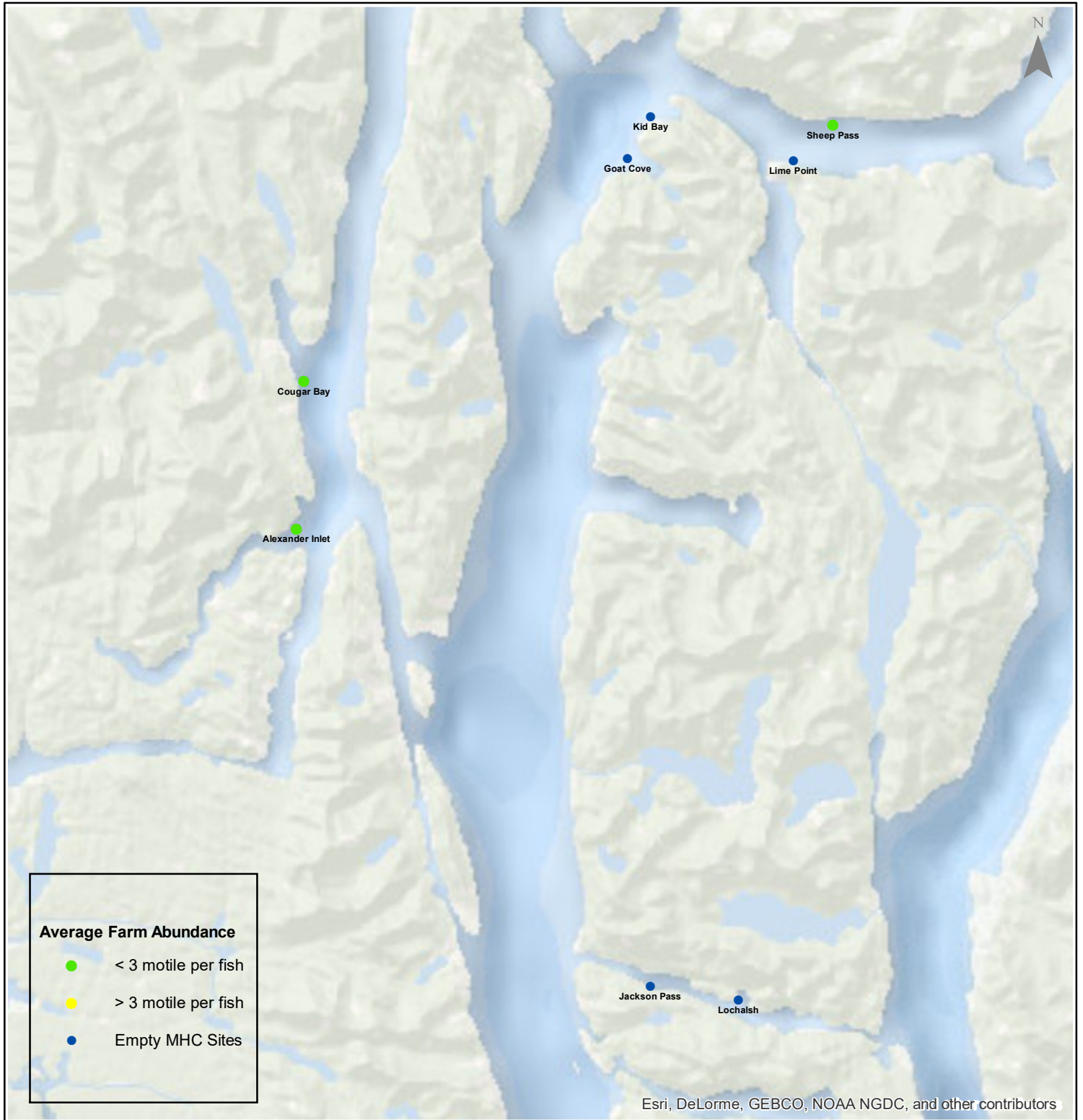
0 15 30 60 90 120 Kilometers

# Sea Lice Monitoring - Average Farm Abundance

## *Klemtu - July 2017*



1:300,000



Esri, DeLorme, GEBCO, NOAA NGDC, and other contributors

0 2.25 4.5 9 13.5 18 Kilometers

Coordinate System: WGS 1984 Web Mercator Auxiliary Sphere

Author: BC Centre for Aquatic Health Sciences Society

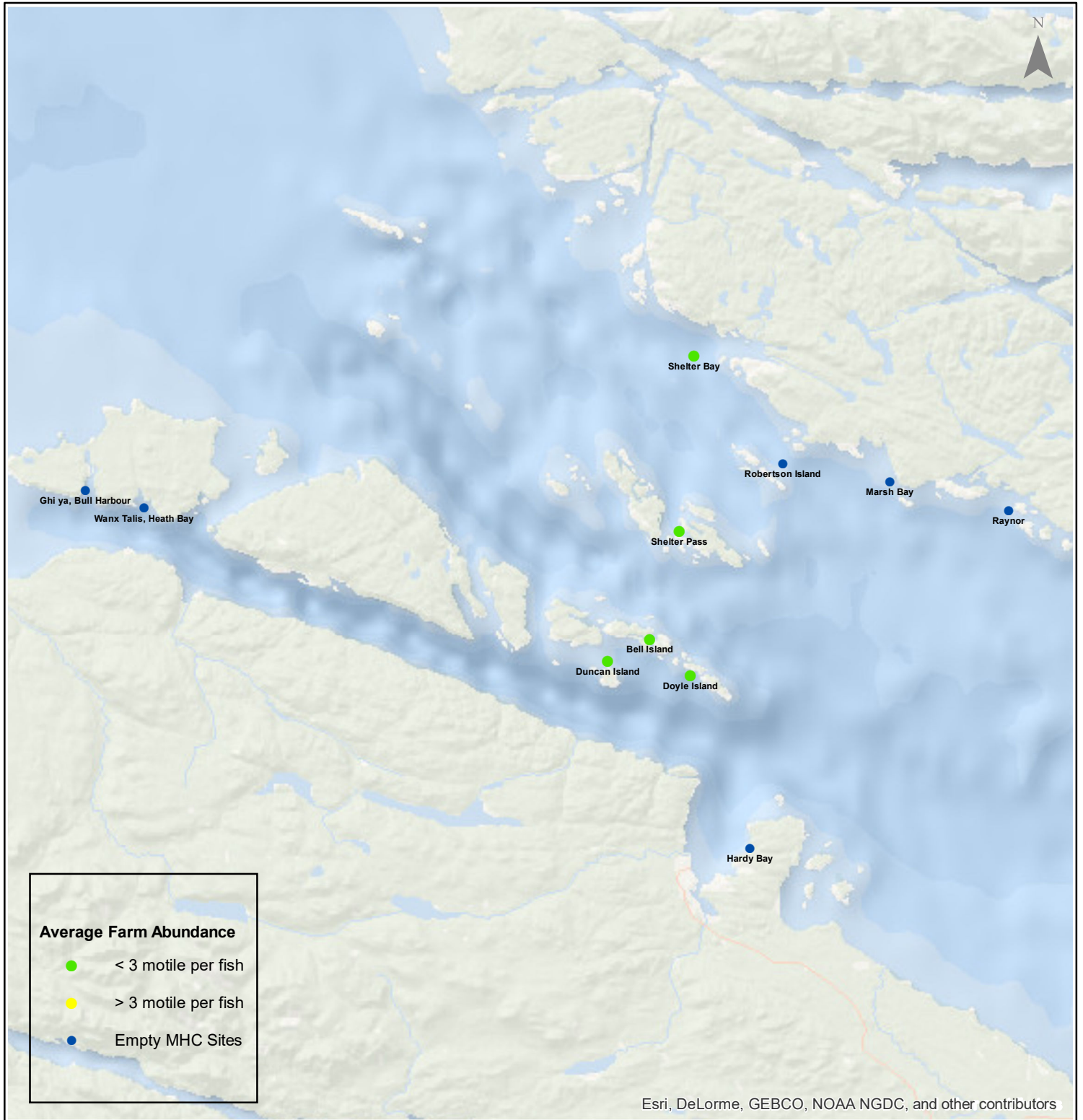
Date: 08/14/2017

# Sea Lice Monitoring - Average Farm Abundance

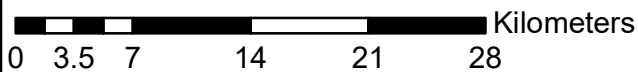
## Port Hardy - July 2017



1:450,000



Esri, DeLorme, GEBCO, NOAA NGDC, and other contributors



Coordinate System: WGS 1984 Web Mercator Auxiliary Sphere

Author: BC Centre for Aquatic Health Sciences Society

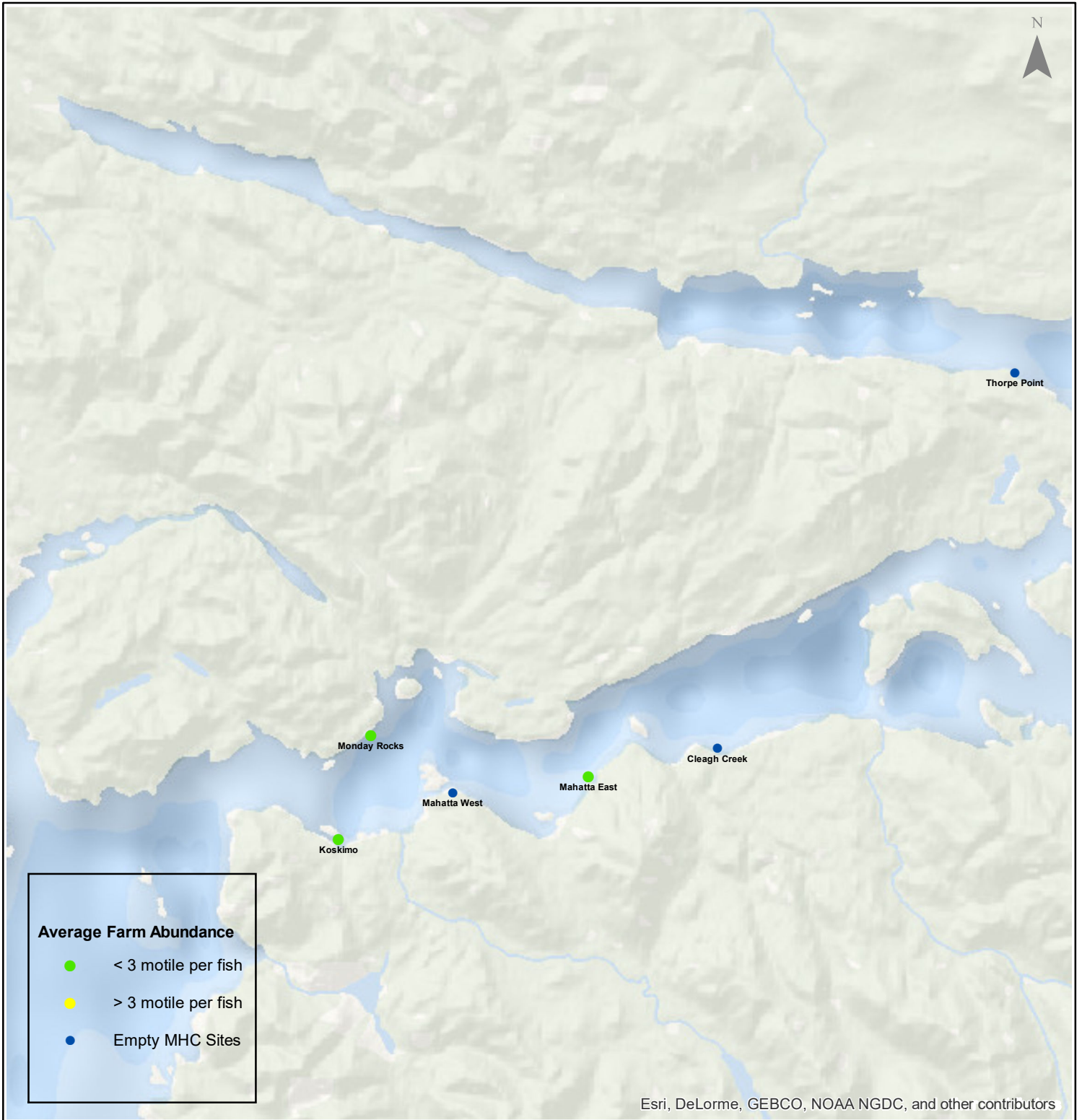
Date: 08/14/2017

# Sea Lice Monitoring - Average Farm Abundance

## Quatsino - July 2017



1:250,000



Esri, DeLorme, GEBCO, NOAA NGDC, and other contributors

Kilometers

Coordinate System: WGS 1984 Web Mercator Auxiliary Sphere

Author: BC Centre for Aquatic Health Sciences Society

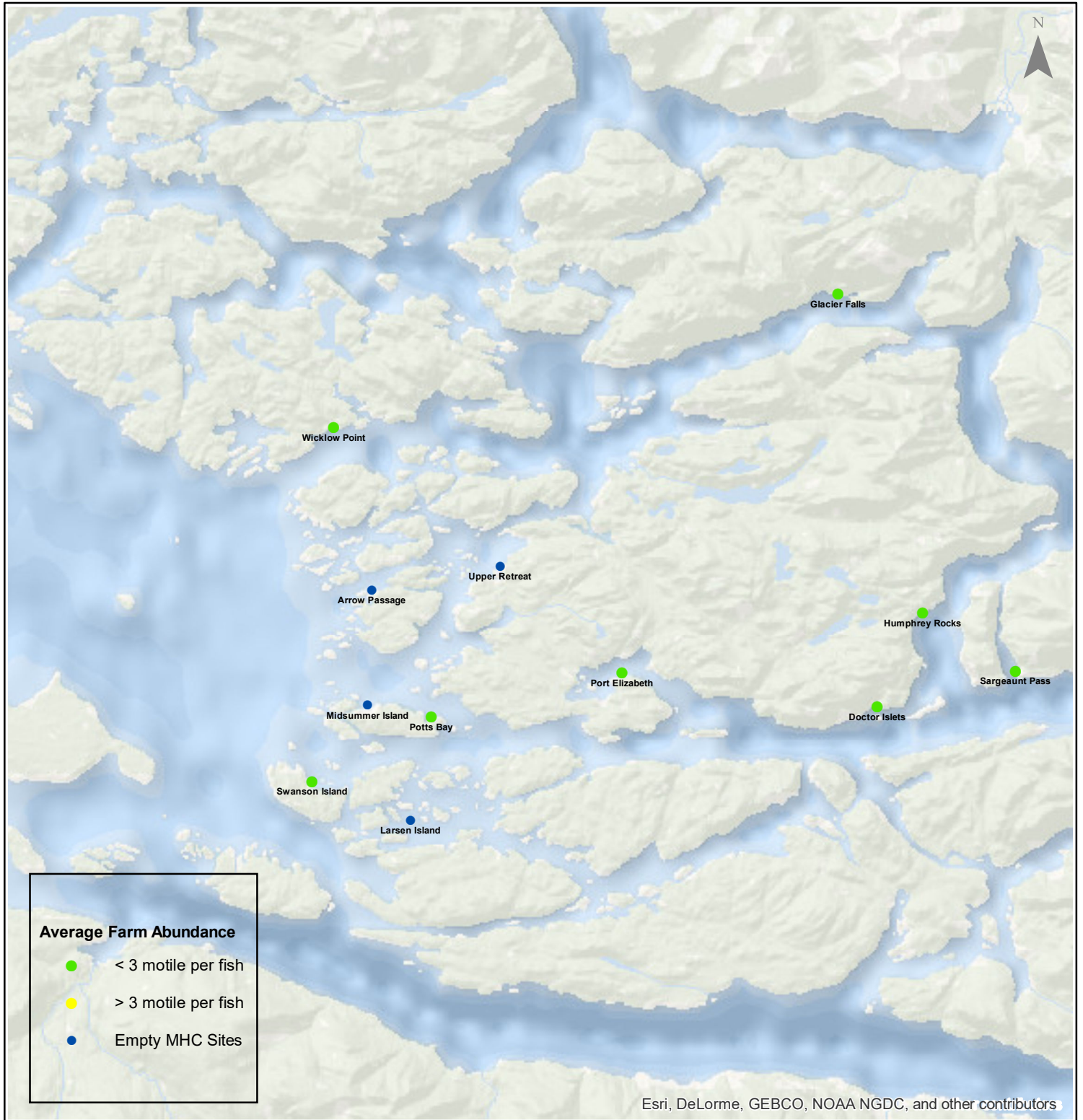
Date: 08/14/2017

# Sea Lice Monitoring - Average Farm Abundance

## Broughton - July 2017



1:450,000



### Average Farm Abundance

- < 3 motile per fish
- > 3 motile per fish
- Empty MHC Sites

Esri, DeLorme, GEBCO, NOAA NGDC, and other contributors

0 3.5 7 14 21 28 Kilometers

Coordinate System: WGS 1984 Web Mercator Auxiliary Sphere

Author: BC Centre for Aquatic Health Sciences Society

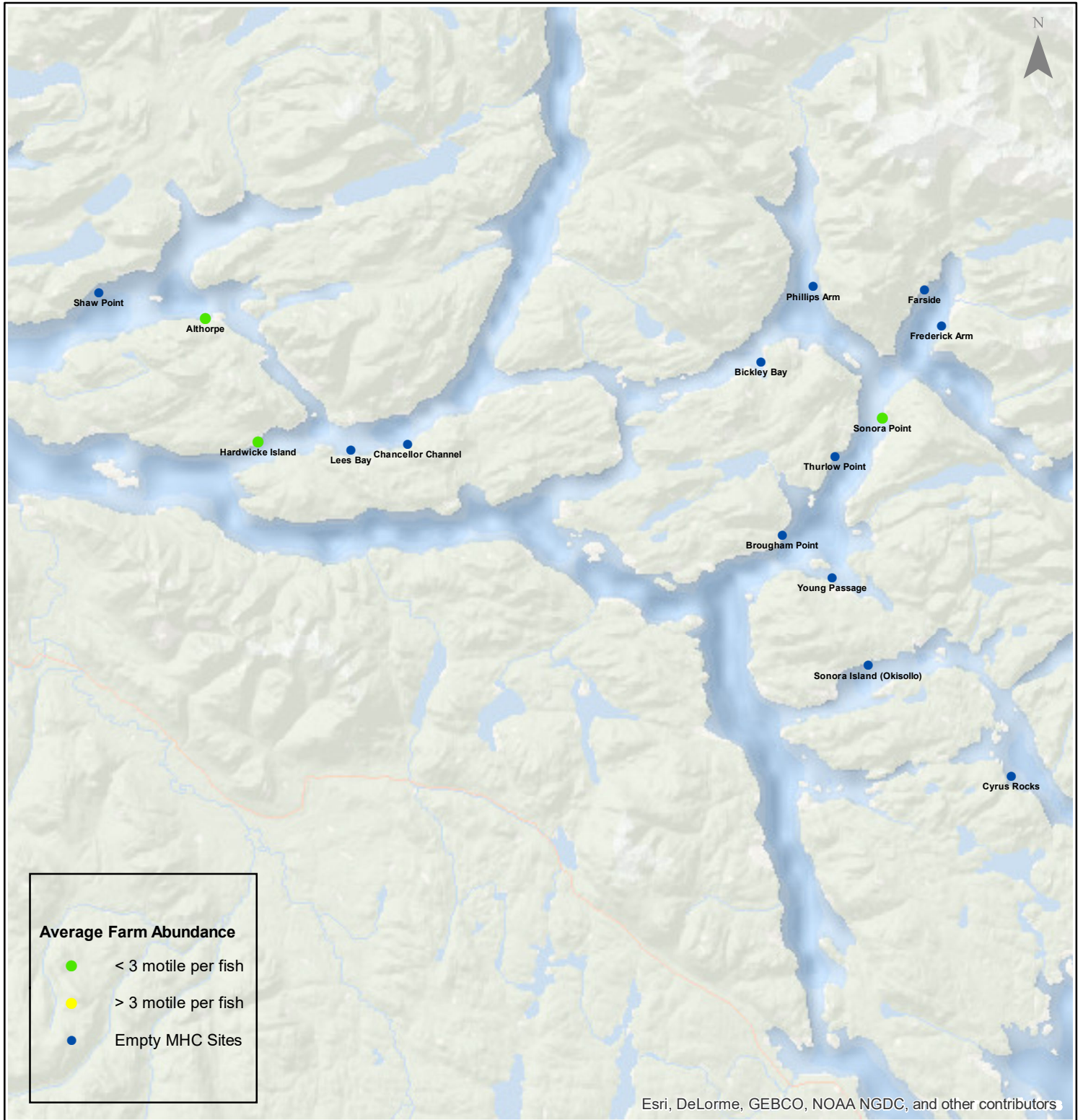
Date: 08/14/2017

# Sea Lice Monitoring - Average Farm Abundance

## Campbell River - July 2017



1:450,000



Esri, DeLorme, GEBCO, NOAA NGDC, and other contributors

0 3.5 7 14 21 28 Kilometers

Coordinate System: WGS 1984 Web Mercator Auxiliary Sphere

Author: BC Centre for Aquatic Health Sciences Society

Date: 08/14/2017

**Sea Lice Monitoring - Average Farm Abundance**

SiteArea	Facility	Date Sampled	Motile L. salmonis	Memo	EMB* Rx Start Date	H2O2** Rx Start Date
Broughton	Arrow Passage	7 2017		Fallow		
Broughton	Doctor Islets	7 2017	0.20		11-Feb-17	
Broughton	Glacier Falls	7 2017	0.29			
Broughton	Humphrey Rocks	7 2017	0.13			
Broughton	Larsen Island	7 2017		Fallow		
Broughton	Midsummer Island	7 2017		Fallow		
Broughton	Port Elizabeth	7 2017	0.46	Started transferring fish to Bull Harbour on July 25, 2017		
Broughton	Potts Bay	7 2017	0.20		1-Feb-17	
Broughton	Sargeaunt Pass	7 2017	0.07			
Broughton	Swanson Island	7 2017	0.63		17-Jan-17	
Broughton	Upper Retreat	7 2017		Fallow		
Broughton	Wicklow Point	7 2017	1.85		3-Jan-17	
Campbell River	Althorpe	7 2017	0.75		19-Jan-17	
Campbell River	Bickley Bay	7 2017		Fallow		
Campbell River	Brougham Point	7 2017		Fallow		
Campbell River	Chancellor Channel	7 2017		Fallow		
Campbell River	Cyrus Rocks	7 2017		Fallow		
Campbell River	Dunsterville	7 2017		Fallow		
Campbell River	Egerton Creek	7 2017		Fallow		
Campbell River	Farside	7 2017		Fallow		
Campbell River	Frederick Arm	7 2017		Fallow		
Campbell River	Hardwicke Island	7 2017	1.96		21-Nov-16	
Campbell River	Lees Bay	7 2017		Fallow		
Campbell River	Phillips Arm	7 2017		Fallow		
Campbell River	Read Island	7 2017		Fallow		
Campbell River	Shaw Point	7 2017		Fallow		
Campbell River	Sonora Island (Okisollo)	7 2017		Fallow		
Campbell River	Sonora Point	7 2017	1.05		24-Dec-16	5-Aug-16
Campbell River	Thurlow Point	7 2017		Fallow		
Campbell River	Young Passage	7 2017		Fallow		
Klemtu	Alexander Inlet	7 2017	0.48	H2O2		8-Jul-17
Klemtu	Cougar Bay	7 2017	1.71	H2O2		12-Jul-17
Klemtu	Goat Cove	7 2017		Fallow		
Klemtu	Jackson Pass	7 2017		Fallow		
Klemtu	Kid Bay	7 2017		Fallow		
Klemtu	Lime Point	7 2017		Fallow		
Klemtu	Lochalsh	7 2017		Fallow		
Klemtu	Sheep Pass	7 2017	1.43		16-Jun-17	25-Jan-17
Port Hardy	Bell Island	7 2017	0.63			
Port Hardy	Doyle Island	7 2017	1.13		2-Mar-17	20-Nov-16
Port Hardy	Duncan Island	7 2017	0.80		25-Feb-17	27-Sep-16
Port Hardy	Ghi ya, Bull Harbour	7 2017		H2O2 during fish transfers from Port Elizabeth		25-Jul-17
Port Hardy	Hardy Bay	7 2017		Fallow		
Port Hardy	Marsh Bay	7 2017		Fallow		
Port Hardy	Raynor	7 2017		Fallow		
Port Hardy	Robertson Island	7 2017		Fallow		
Port Hardy	Shelter Bay	7 2017	0.46			
Port Hardy	Shelter Pass	7 2017	0.14		2-Mar-17	
Port Hardy	Wanx Talis, Heath Bay	7 2017		Fallow		
Quatsino	Cleagh Creek	7 2017		Fallow		
Quatsino	Koskimo	7 2017	0.26			21-May-17
Quatsino	Mahatta East	7 2017	0.35			25-Apr-17
Quatsino	Mahatta West	7 2017		Fallow		
Quatsino	Monday Rocks	7 2017	0.38			7-May-17
Quatsino	Thorpe Point	7 2017		Fallow		

\*Enamectin Benzoate (Brand Name SLICE)

\*\* Hydrogen Peroxide (Brand Name Interlox Paramove 50)

