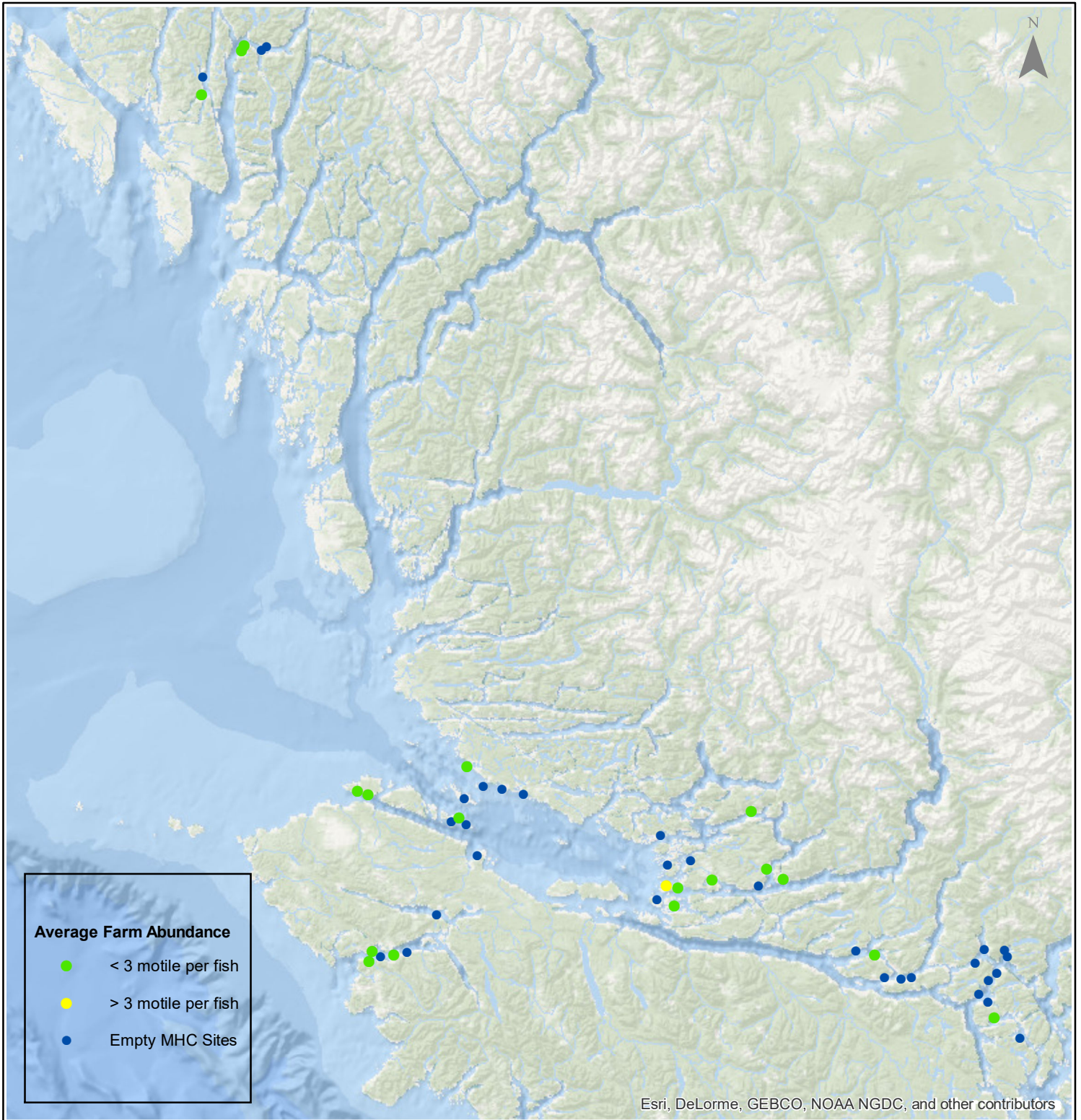


Sea Lice Monitoring - Average Farm Abundance

All Sites - January 2018



1:2,500,000



Esri, DeLorme, GEBCO, NOAA NGDC, and other contributors

0 15 30 60 90 120 Kilometers

Coordinate System: WGS 1984 Web Mercator Auxiliary Sphere

Author: BC Centre for Aquatic Health Sciences Society

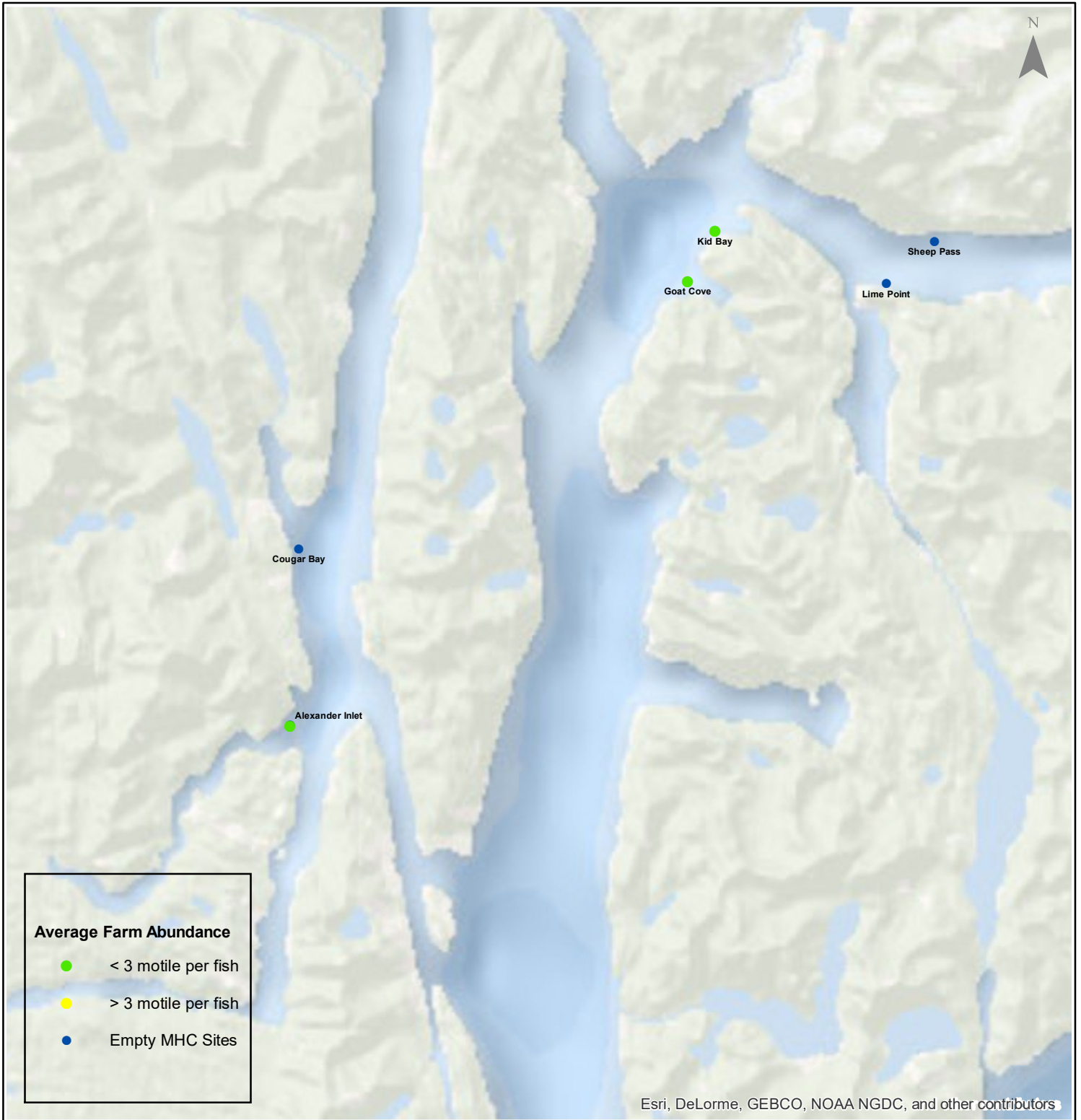
Date: 02/14/2018

Sea Lice Monitoring - Average Farm Abundance

Klemtu - January 2018



1:250,000



Esri, DeLorme, GEBCO, NOAA NGDC, and other contributors

0 1.75 3.5 7 10.5 14 Kilometers

Coordinate System: WGS 1984 Web Mercator Auxiliary Sphere

Author: BC Centre for Aquatic Health Sciences Society

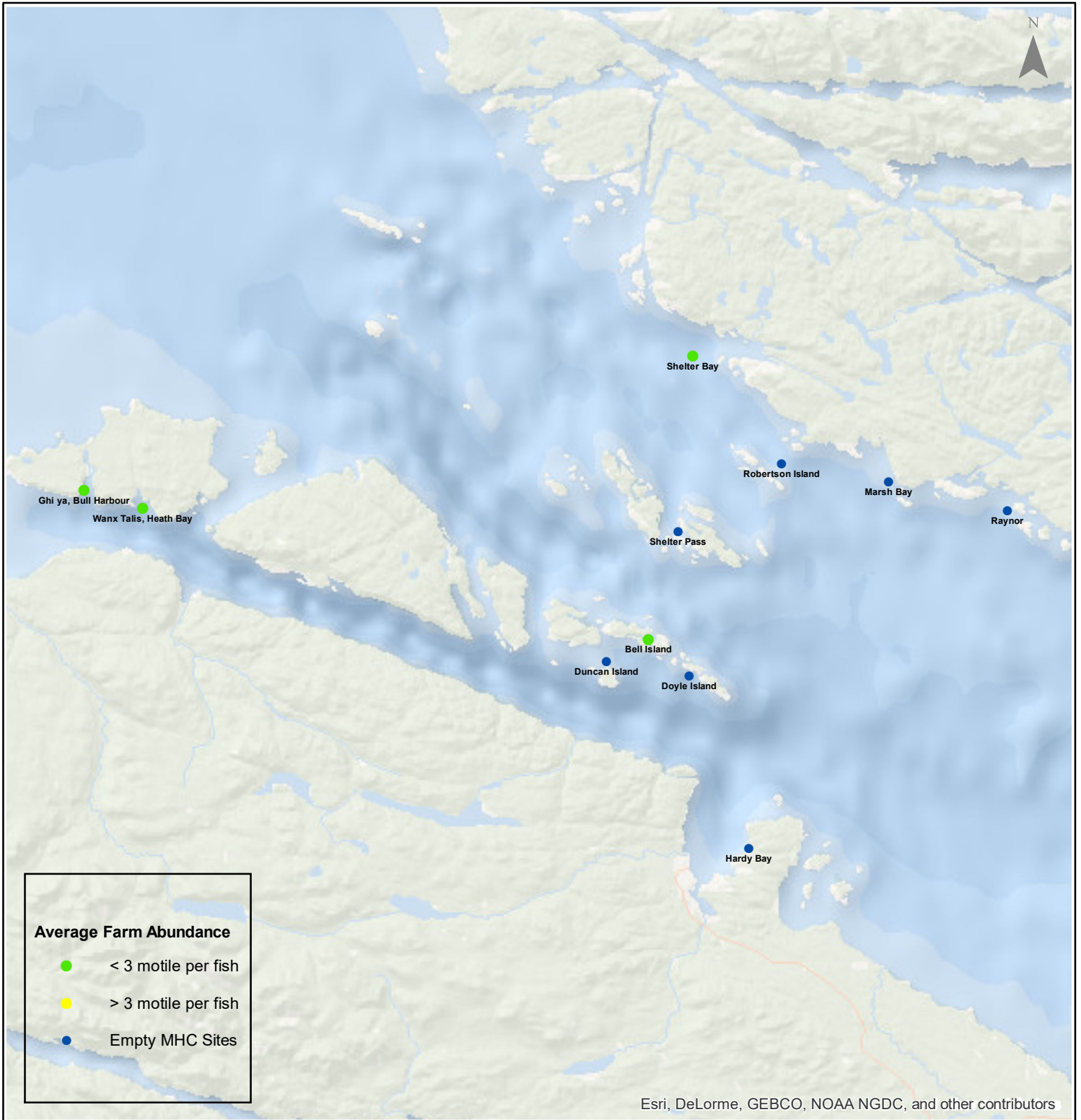
Date: 02/14/2018

Sea Lice Monitoring - Average Farm Abundance

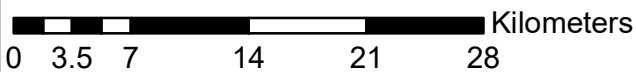
Port Hardy - January 2018



1:450,000



Esri, DeLorme, GEBCO, NOAA NGDC, and other contributors



Coordinate System: WGS 1984 Web Mercator Auxiliary Sphere

Author: BC Centre for Aquatic Health Sciences Society

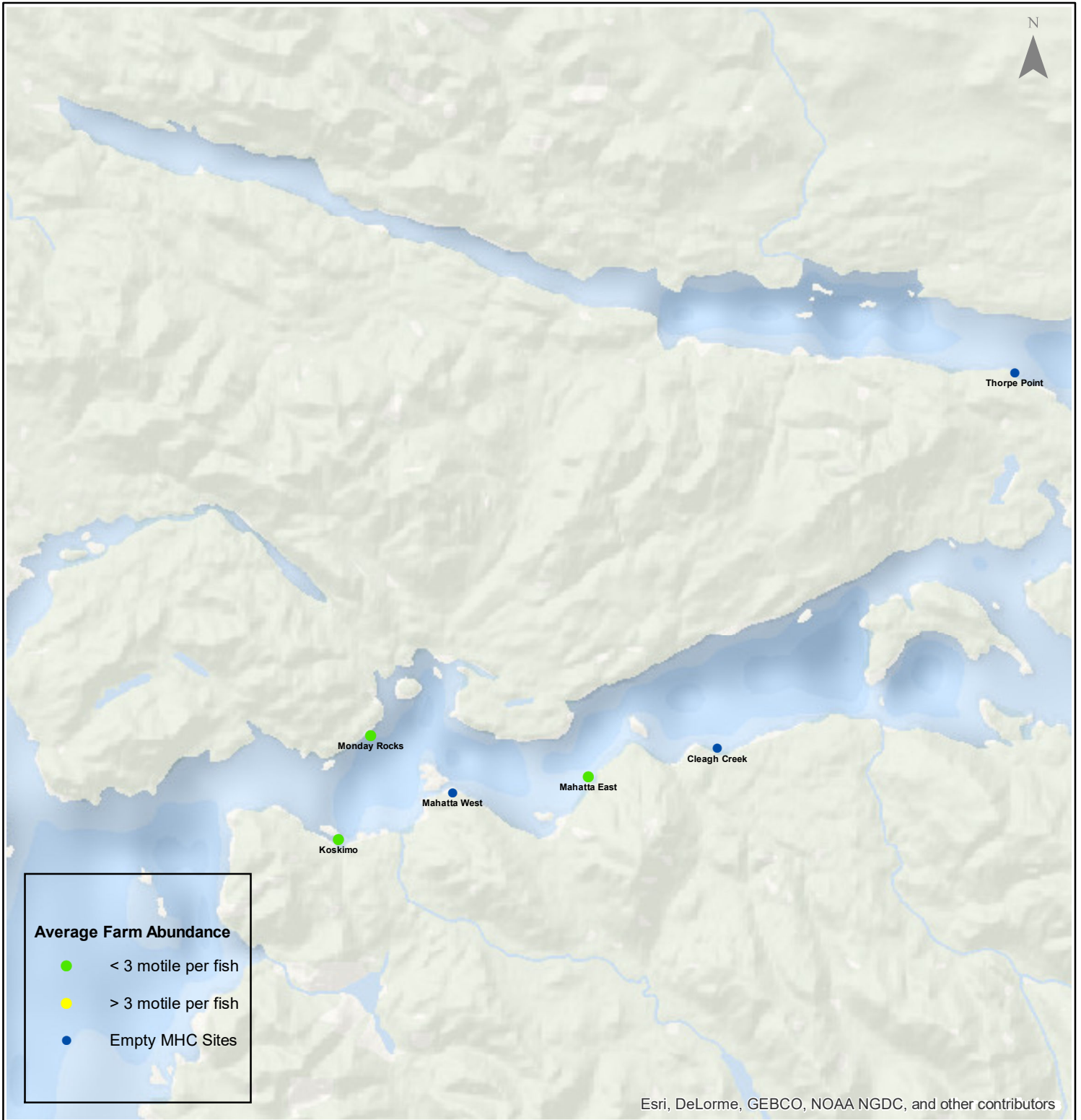
Date: 02/14/2018

Sea Lice Monitoring - Average Farm Abundance

Quatsino - January 2018



1:250,000



Esri, DeLorme, GEBCO, NOAA NGDC, and other contributors

Kilometers

Coordinate System: WGS 1984 Web Mercator Auxiliary Sphere

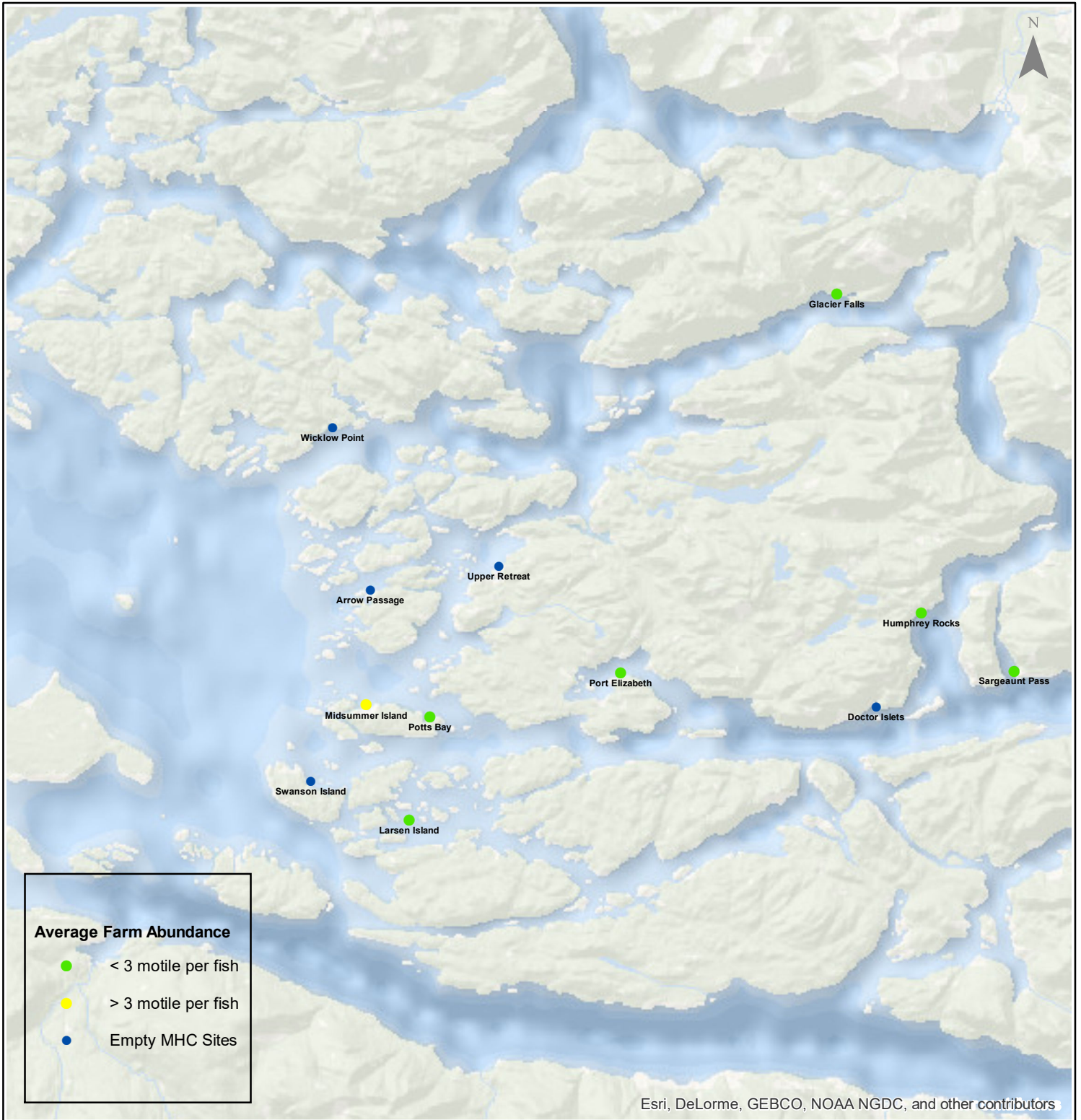
Author: BC Centre for Aquatic Health Sciences Society

Date: 02/14/2018

Sea Lice Monitoring - Average Farm Abundance Broughton - January 2018



1:450,000



Esri, DeLorme, GEBCO, NOAA NGDC, and other contributors

0 3.5 7 14 21 28 Kilometers

Coordinate System: WGS 1984 Web Mercator Auxiliary Sphere

Author: BC Centre for Aquatic Health Sciences Society

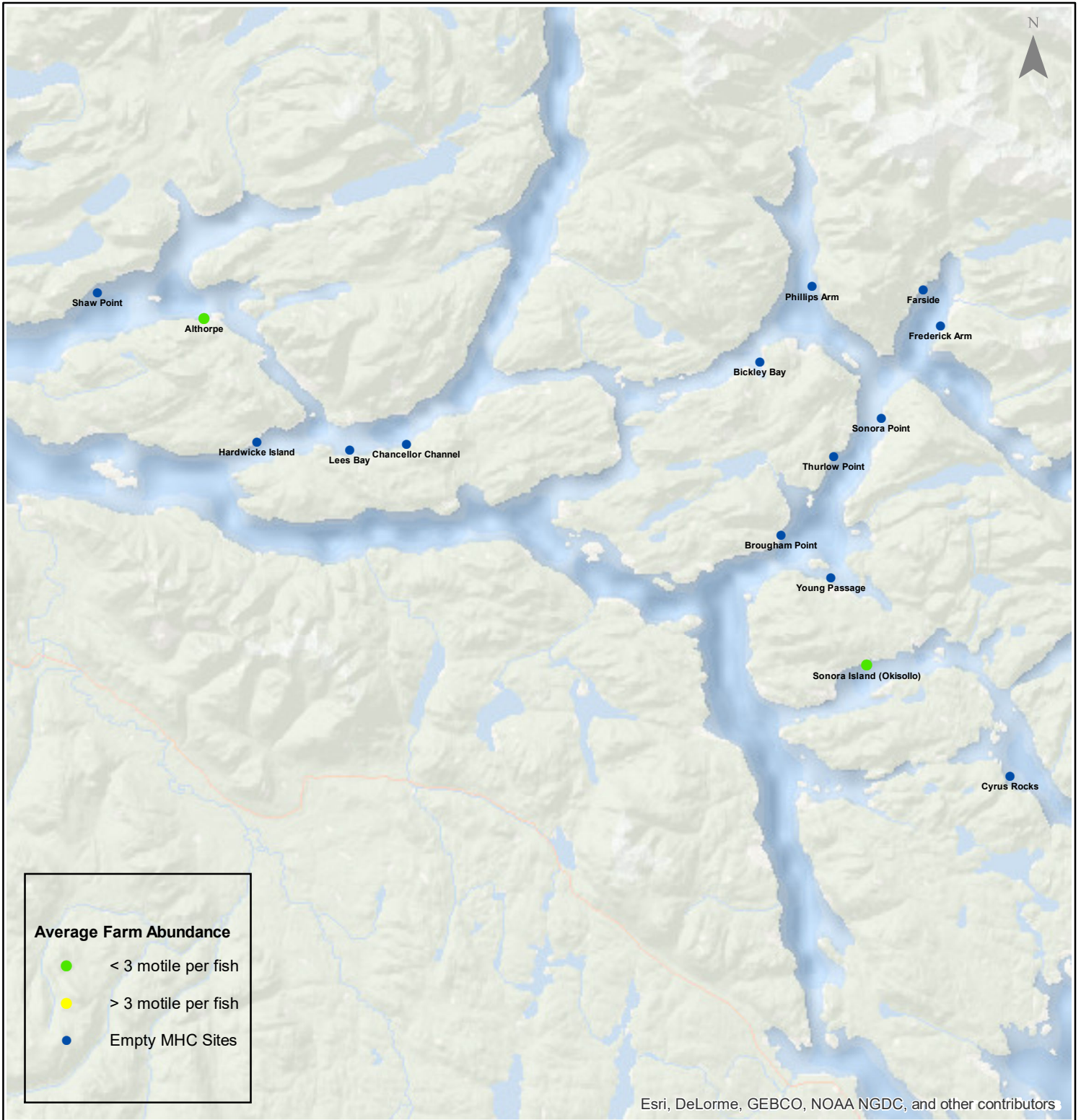
Date: 02/14/2018

Sea Lice Monitoring - Average Farm Abundance

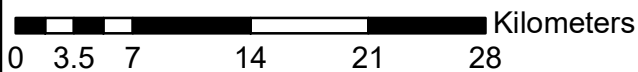
Campbell River - January 2018



1:450,000



Esri, DeLorme, GEBCO, NOAA NGDC, and other contributors



Coordinate System: WGS 1984 Web Mercator Auxiliary Sphere

Author: BC Centre for Aquatic Health Sciences Society

Date: 02/14/2018

Sea Lice Monitoring - Average Farm Abundance

SiteArea	Facility	Date Sampled	Motile L. salmonis	Memo	EMB* Rx Start Date	H2O2** Rx Start Date
Broughton	Arrow Passage	1 2018		Fallow		
Broughton	Doctor Islets	1 2018		Fallow as of Jan 15, 2018	11-Feb-17	
Broughton	Glacier Falls	1 2018	2.04	Treatment planned for February		
Broughton	Humphrey Rocks	1 2018	0.94	Treatment planned for February		
Broughton	Larsen Island	1 2018	0.04			
Broughton	Midsummer Island	1 2018	3.43	Treatment planned for February		
Broughton	Port Elizabeth	1 2018	0.06			
Broughton	Potts Bay	1 2018	0.18		4-Dec-17	
Broughton	Sargeaunt Pass	1 2018	0.34	Treatment planned for February		
Broughton	Swanson Island	1 2018		Fallow		
Broughton	Upper Retreat	1 2018		Fallow		
Broughton	Wicklow Point	1 2018		Site will be empty first week of February	28-Sep-17	
Campbell River	Althorpe	1 2018	0.96		30-Oct-17	
Campbell River	Bickley Bay	1 2018		Fallow		
Campbell River	Brougham Point	1 2018		Fallow		
Campbell River	Chancellor Channel	1 2018		Fallow		
Campbell River	Cyrus Rocks	1 2018		Fallow		
Campbell River	Dunsterville	1 2018		Fallow		
Campbell River	Egerton Creek	1 2018		Fallow		
Campbell River	Farside	1 2018		Fallow		
Campbell River	Frederick Arm	1 2018		Fallow		
Campbell River	Hardwicke Island	1 2018		Fallow		
Campbell River	Lees Bay	1 2018		Fallow		
Campbell River	Phillips Arm	1 2018		Fallow		
Campbell River	Read Island	1 2018		Fallow		
Campbell River	Shaw Point	1 2018		Fish <4 pens		
Campbell River	Sonora Island (Okisollo)	1 2018	0.16		19-Nov-17	11-Aug-17
Campbell River	Sonora Point	1 2018		Fallow		
Campbell River	Thurlow Point	1 2018		Fallow		
Campbell River	Young Passage	1 2018		Fallow		
Klemtu	Alexander Inlet	1 2018	1.89			31-Oct-17
Klemtu	Cougar Bay	1 2018		Fallow		
Klemtu	Goat Cove	1 2018	1.35			20-Oct-17
Klemtu	Kid Bay	1 2018	0.22			
Klemtu	Lime Point	1 2018		Fallow		
Klemtu	Sheep Pass	1 2018		Fallow		
Port Hardy	Bell Island	1 2018	0.14			
Port Hardy	Doyle Island	1 2018		Smolt entry starting Jan 8, 2018		
Port Hardy	Duncan Island	1 2018		Fallow		
Port Hardy	Ghi ya, Bull Harbour	1 2018	0.16		25-Oct-17	25-Jul-17
Port Hardy	Hardy Bay	1 2018		Fallow		
Port Hardy	Marsh Bay	1 2018		Fallow		
Port Hardy	Raynor	1 2018		Fallow		
Port Hardy	Robertson Island	1 2018		Fallow		
Port Hardy	Shelter Bay	1 2018	0.89			
Port Hardy	Shelter Pass	1 2018		Smolt entry starting Jan 22, 2018		
Port Hardy	Wanx Talis, Heath Bay	1 2018	0.65		19-Dec-17	20-Sep-17
Quatsino	Cleagh Creek	1 2018		Fallow		
Quatsino	Koskimo	1 2018	0.30		18-Nov-17	21-May-17
Quatsino	Mahatta East	1 2018	0.07		12-Nov-17	25-Apr-17
Quatsino	Mahatta West	1 2018		Fallow		
Quatsino	Monday Rocks	1 2018	0.10		18-Nov-17	7-May-17
Quatsino	Thorpe Point	1 2018		Fallow		

*Emamectin Benzoate (Brand Name SLICE)

** Hydrogen Peroxide (Brand Name Interax Paramove 50)

