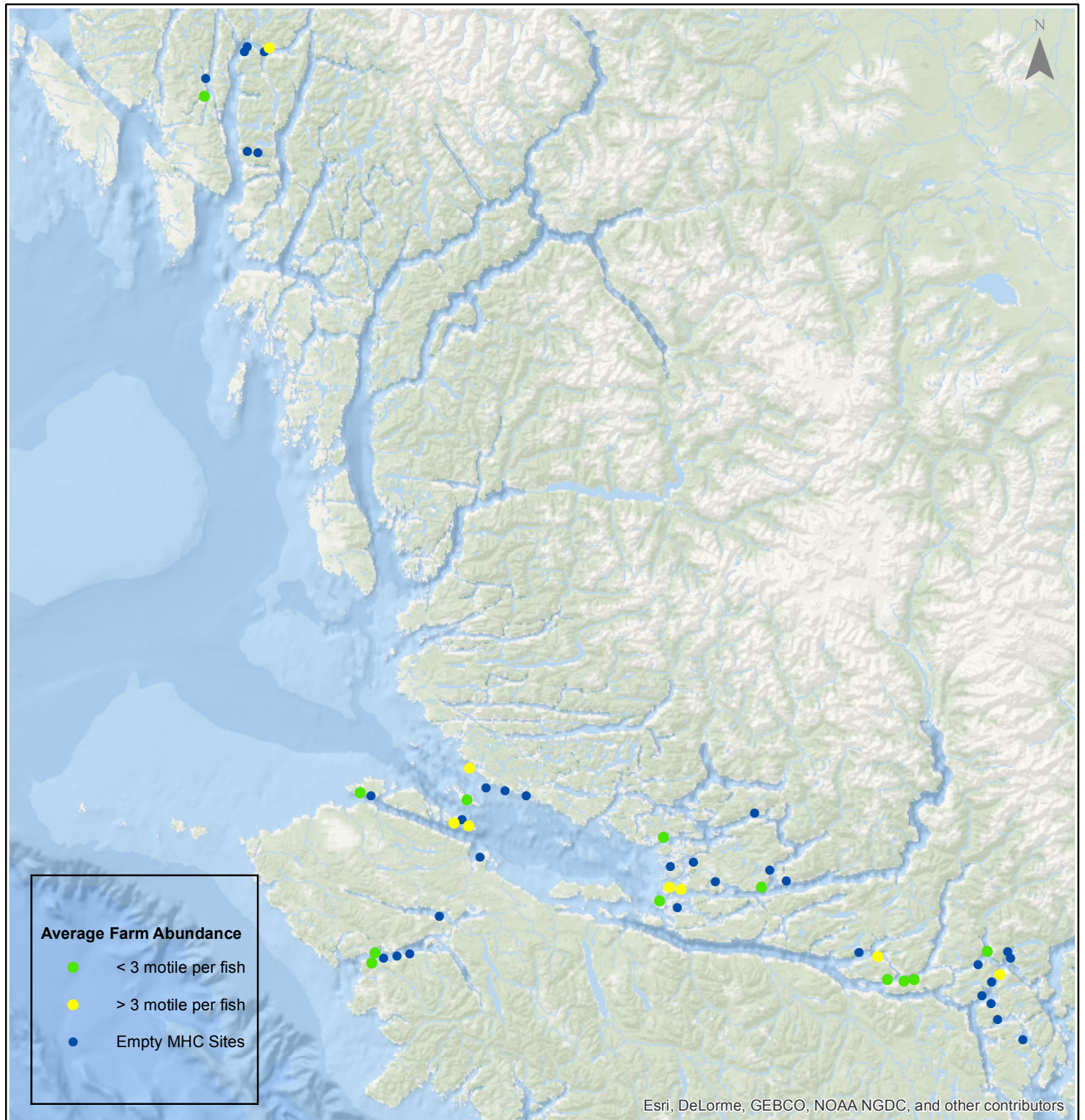


Sea Lice Monitoring - Average Farm Abundance

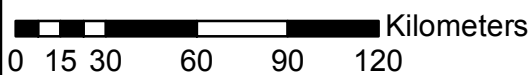
All Sites - January 2017



1:2,500,000



Esri, DeLorme, GEBCO, NOAA NGDC, and other contributors



Coordinate System: WGS 1984 Web Mercator Auxiliary Sphere

Author: BC Centre for Aquatic Health Sciences Society

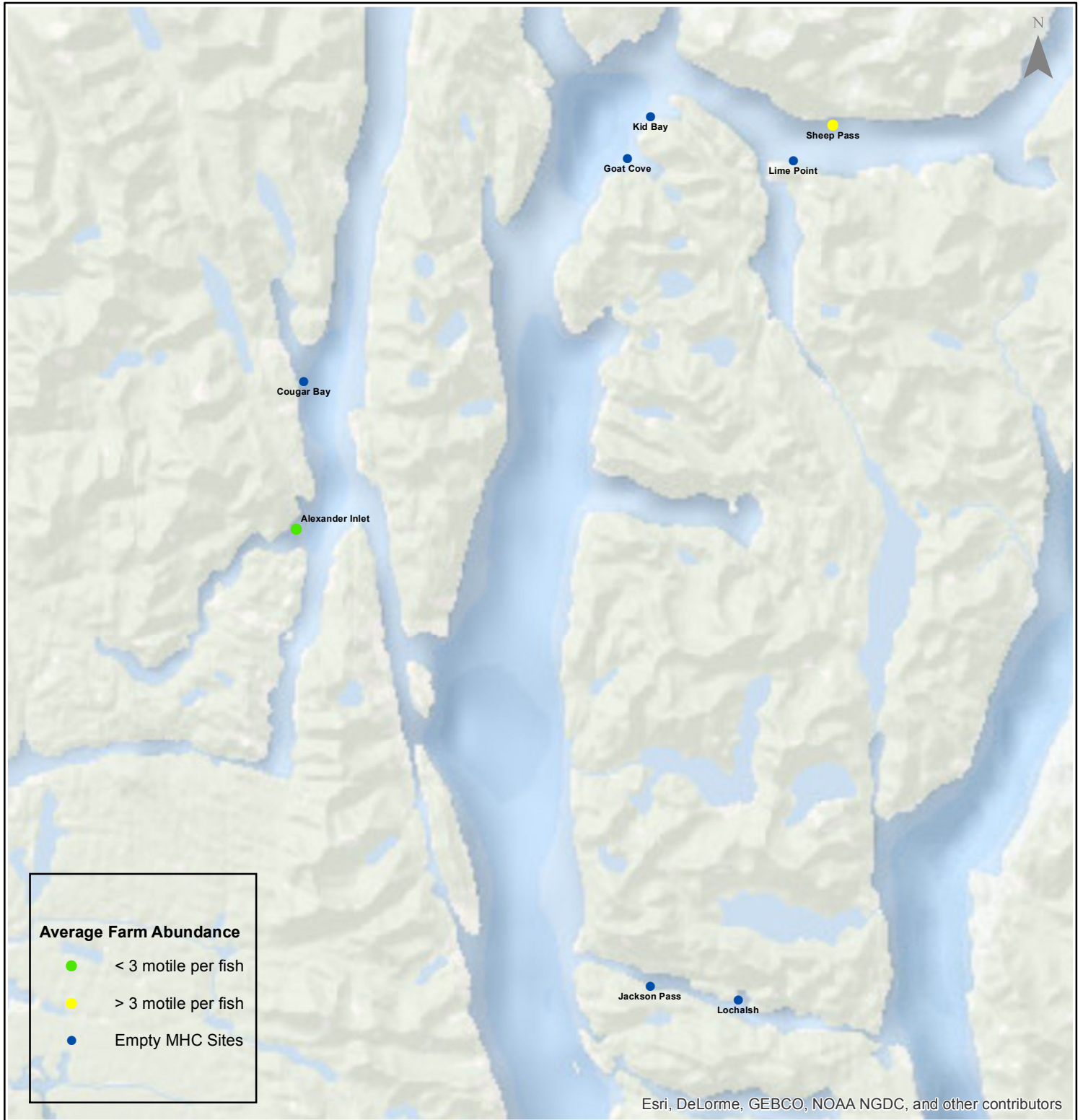
Date: 02/14/2017

Sea Lice Monitoring - Average Farm Abundance

Klemtu - January 2017



1:300,000



0 2.25 4.5 9 13.5 18 Kilometers

Coordinate System: WGS 1984 Web Mercator Auxiliary Sphere

Author: BC Centre for Aquatic Health Sciences Society

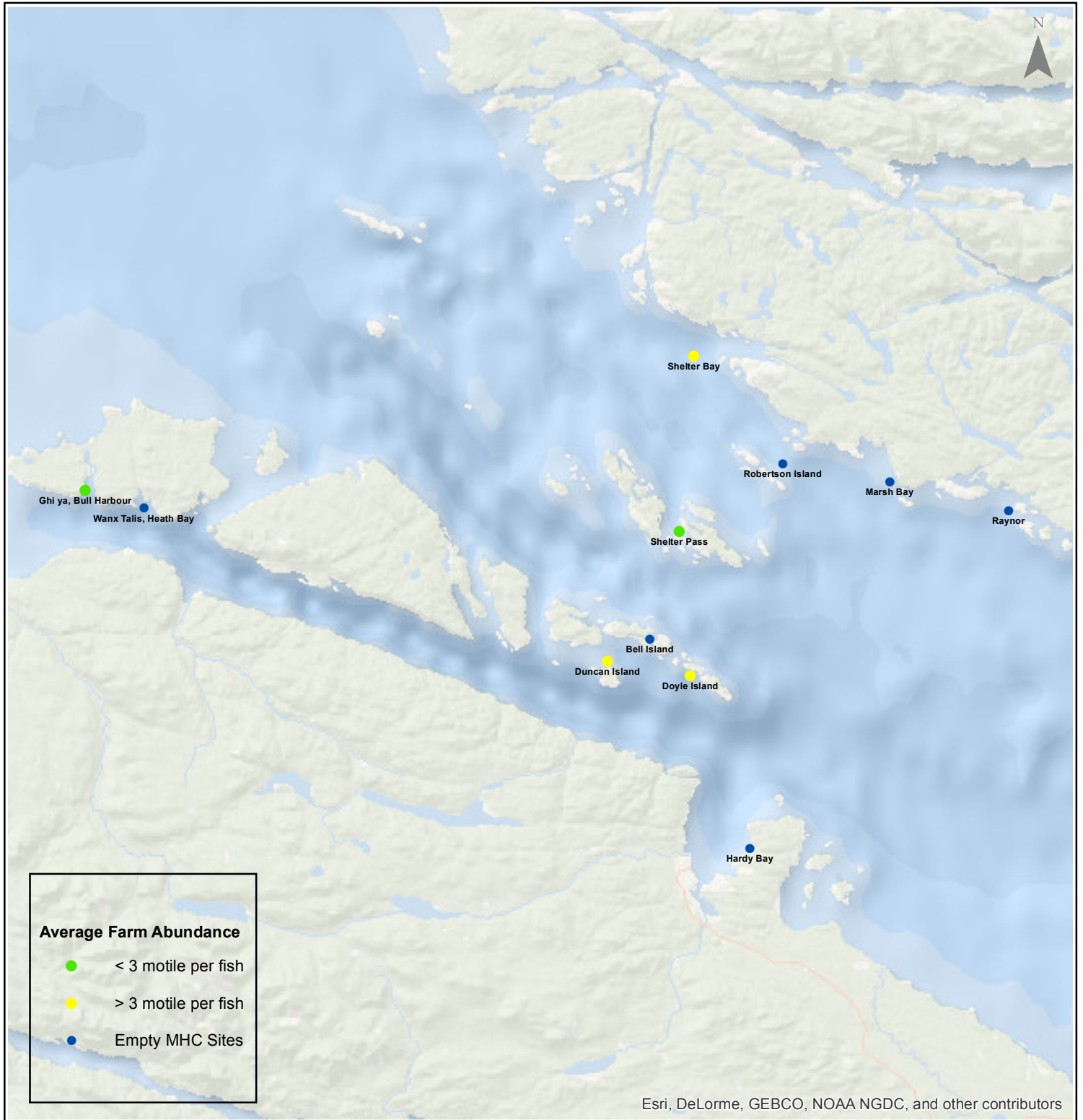
Date: 02/14/2017

Sea Lice Monitoring - Average Farm Abundance

Port Hardy - January 2017



1:450,000



Esri, DeLorme, GEBCO, NOAA NGDC, and other contributors

0 3.5 7 14 21 28 Kilometers

Coordinate System: WGS 1984 Web Mercator Auxiliary Sphere

Author: BC Centre for Aquatic Health Sciences Society

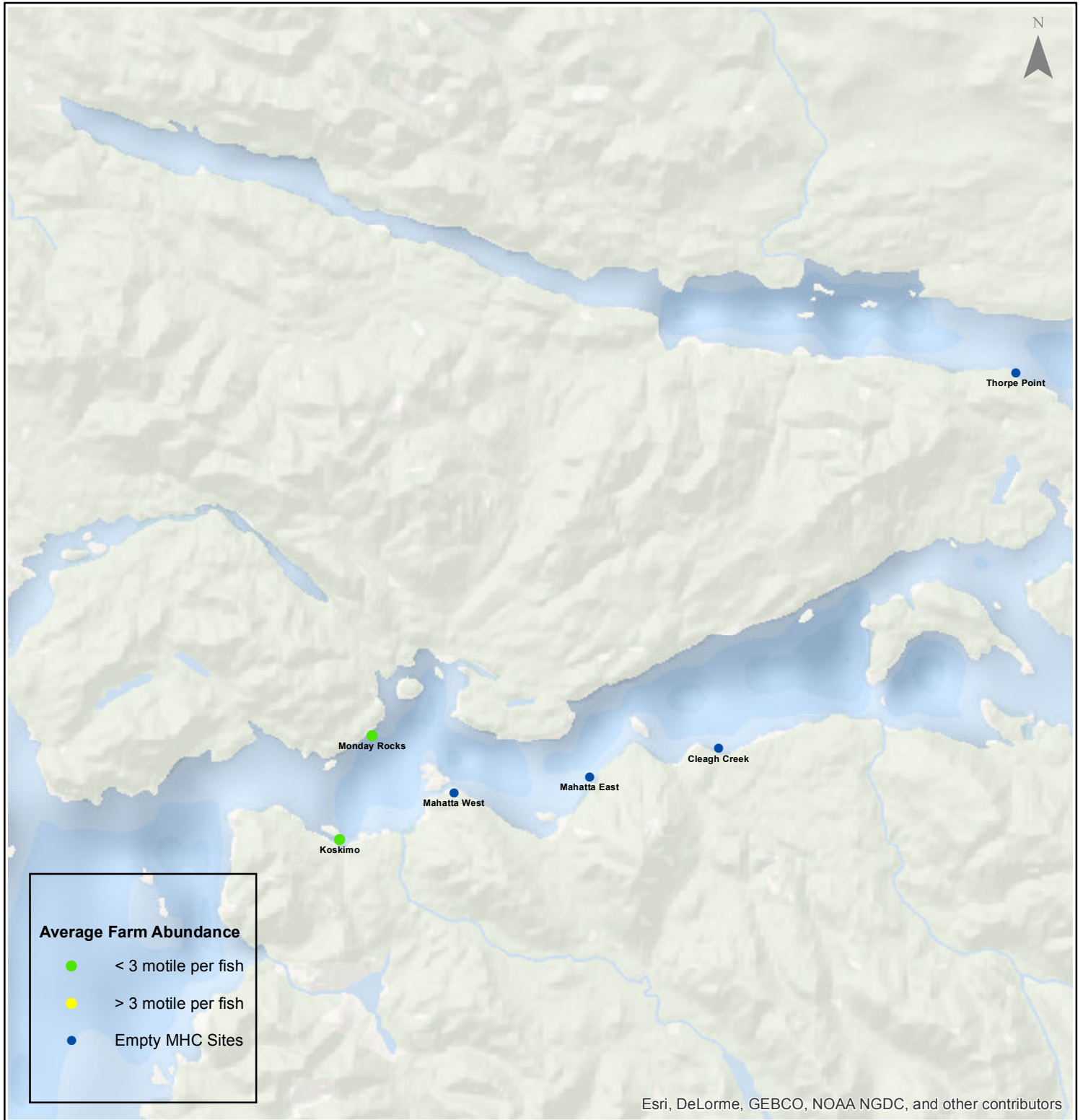
Date: 02/14/2017

Sea Lice Monitoring - Average Farm Abundance

Quatsino - January 2017



1:250,000



Esri, DeLorme, GEBCO, NOAA NGDC, and other contributors

0 1.753.5 7 10.5 14 Kilometers

Coordinate System: WGS 1984 Web Mercator Auxiliary Sphere

Author: BC Centre for Aquatic Health Sciences Society

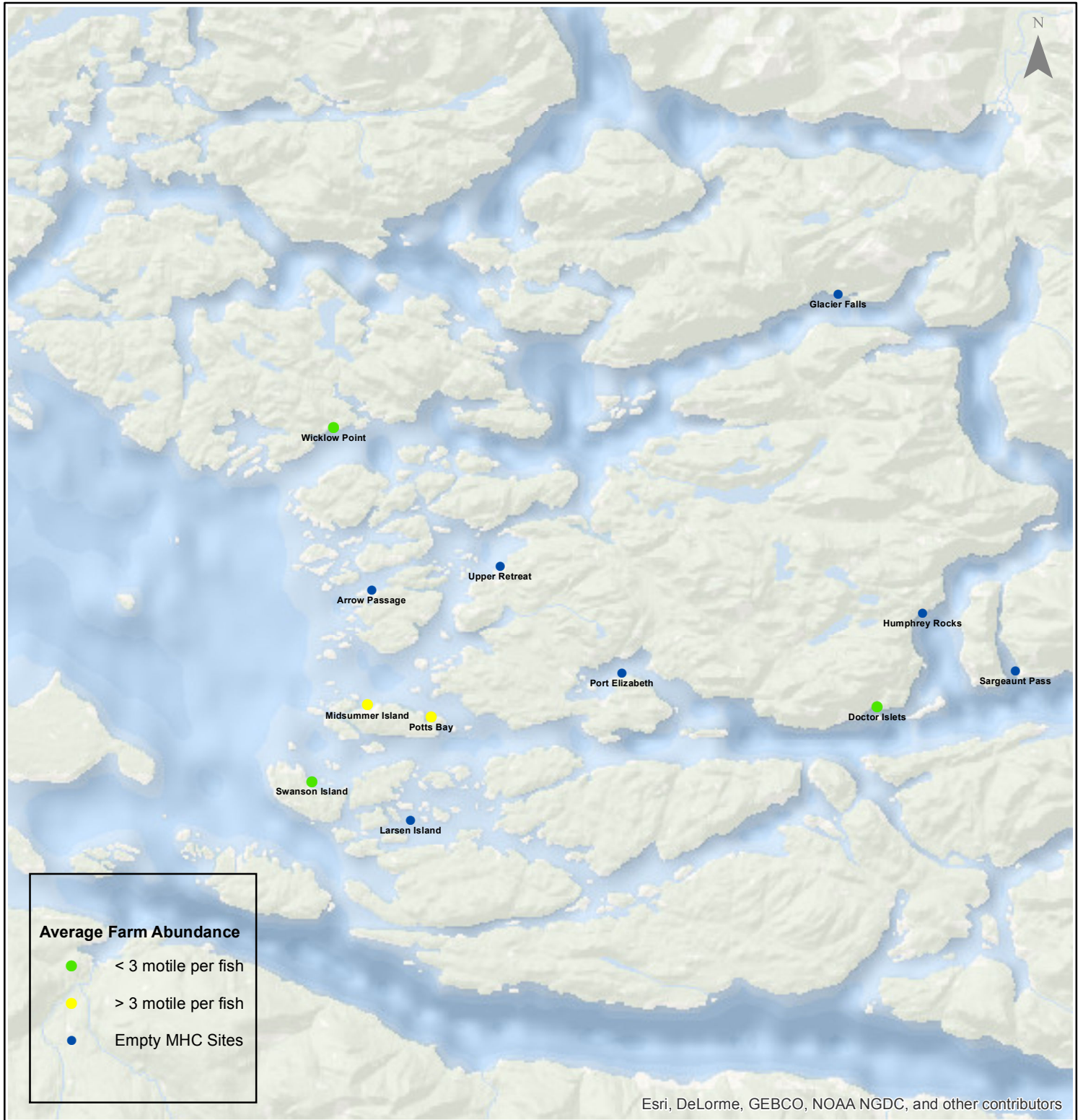
Date: 02/14/2017

Sea Lice Monitoring - Average Farm Abundance

Broughton - January 2017



1:450,000



0 3.5 7 14 21 28 Kilometers

Esri, DeLorme, GEBCO, NOAA NGDC, and other contributors

Coordinate System: WGS 1984 Web Mercator Auxiliary Sphere

Author: BC Centre for Aquatic Health Sciences Society

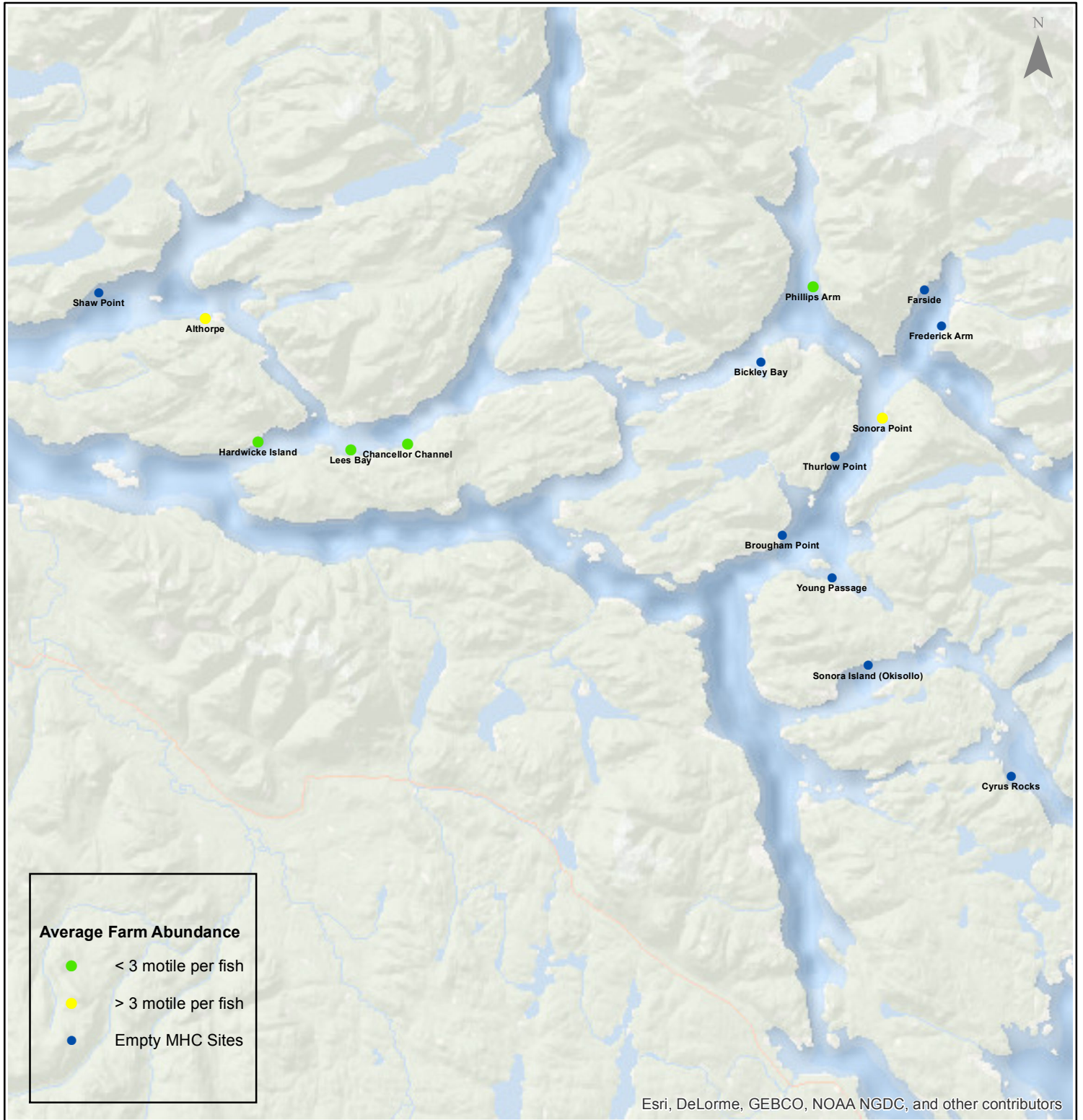
Date: 02/14/2017

Sea Lice Monitoring - Average Farm Abundance

Campbell River - January 2017



1:450,000



Esri, DeLorme, GEBCO, NOAA NGDC, and other contributors

0 3.5 7 14 21 28 Kilometers

Coordinate System: WGS 1984 Web Mercator Auxiliary Sphere

Author: BC Centre for Aquatic Health Sciences Society

Date: 02/14/2017

Sea Lice Monitoring - Average Farm Abundance

SiteArea	Facility	Date Sampled	Motile L. salmonis	Memo	EMB* Rx Start Date	H2O2** Rx Start Date
Broughton	Arrow Passage	1 2017		Fallow		
Broughton	Doctor Islets	1 2017	2.14	SLICE planned for early February	22-May-16	
Broughton	Glacier Falls	1 2017		Fallow		
Broughton	Humphrey Rocks	1 2017		Fallow		
Broughton	Larsen Island	1 2017		Fallow		
Broughton	Midsummer Island	1 2017	9.70	SLICE planned for early February	14-Feb-16	
Broughton	Port Elizabeth	1 2017		Smolt entry Jan 10, 2017		
Broughton	Potts Bay	1 2017	6.29	SLICE planned for early February	23-Jan-16	
Broughton	Sargeaunt Pass	1 2017		Smolt entry Jan 16, 2017		
Broughton	Swanson Island	1 2017	2.87	SLICE	17-Jan-17	
Broughton	Upper Retreat	1 2017		Fallow		
Broughton	Wicklow Point	1 2017	0.50	SLICE	3-Jan-17	
Campbell River	Althorpe	1 2017	4.02	SLICE	19-Jan-17	
Campbell River	Bickley Bay	1 2017		Fallow		
Campbell River	Brougham Point	1 2017		Fallow		
Campbell River	Chancellor Channel	1 2017	0.32		21-Nov-16	
Campbell River	Cyrus Rocks	1 2017		Fallow		
Campbell River	Dunsterville	1 2017		Fallow		
Campbell River	Egerton Creek	1 2017		Fallow		
Campbell River	Farside	1 2017		Fallow		
Campbell River	Frederick Arm	1 2017		Fallow		
Campbell River	Hardwicke Island	1 2017	0.40		21-Nov-16	
Campbell River	Lees Bay	1 2017	0.20		20-Nov-16	10-May-16
Campbell River	Phillips Arm	1 2017	0.27		5-Dec-16	
Campbell River	Read Island	1 2017		Fallow		
Campbell River	Shaw Point	1 2017		Fallow		
Campbell River	Sonora Island (Okisollo)	1 2017		Fallow		
Campbell River	Sonora Point	1 2017	8.77		24-Dec-16	5-Aug-16
Campbell River	Thurlow Point	1 2017		Fallow		
Campbell River	Young Passage	1 2017		Fallow		
Klemtu	Alexander Inlet	1 2017	1.08			
Klemtu	Cougar Bay	1 2017		Fallow		
Klemtu	Goat Cove	1 2017		Fallow		
Klemtu	Jackson Pass	1 2017		Fallow		
Klemtu	Kid Bay	1 2017		Fallow		
Klemtu	Lime Point	1 2017		Fallow		
Klemtu	Lochalsh	1 2017		Fallow		
Klemtu	Sheep Pass	1 2017	4.63	H2O2 and Harvesting	22-Jun-16	25-Jan-17
Port Hardy	Bell Island	1 2017		Fallow		
Port Hardy	Doyle Island	1 2017	3.10	SLICE planned for late February		20-Nov-16
Port Hardy	Duncan Island	1 2017	3.78	SLICE Planned for mid February		27-Sep-16
Port Hardy	Ghi ya, Bull Harbour	1 2017	0.78		16-Jul-16	21-Mar-16
Port Hardy	Hardy Bay	1 2017		Fallow		
Port Hardy	Marsh Bay	1 2017		Fallow		
Port Hardy	Raynor	1 2017		Fallow		
Port Hardy	Robertson Island	1 2017		Fallow		
Port Hardy	Shelter Bay	1 2017	3.62	Site will be empty early February	1-Mar-16	
Port Hardy	Shelter Pass	1 2017	2.44	SLICE planned for late February		
Port Hardy	Wanx Talis, Heath Bay	1 2017		Fallow		
Quatsino	Cleagh Creek	1 2017		Fallow		
Quatsino	Koskimo	1 2017	0.05			
Quatsino	Mahatta East	1 2017		Fallow		
Quatsino	Mahatta West	1 2017		Fallow		
Quatsino	Monday Rocks	1 2017	0.08			
Quatsino	Thorpe Point	1 2017		Fallow		

*Emamectin Benzoate (Brand Name SLICE)

** Hydrogen Peroxide (Brand Name Interox Paramove 50)

