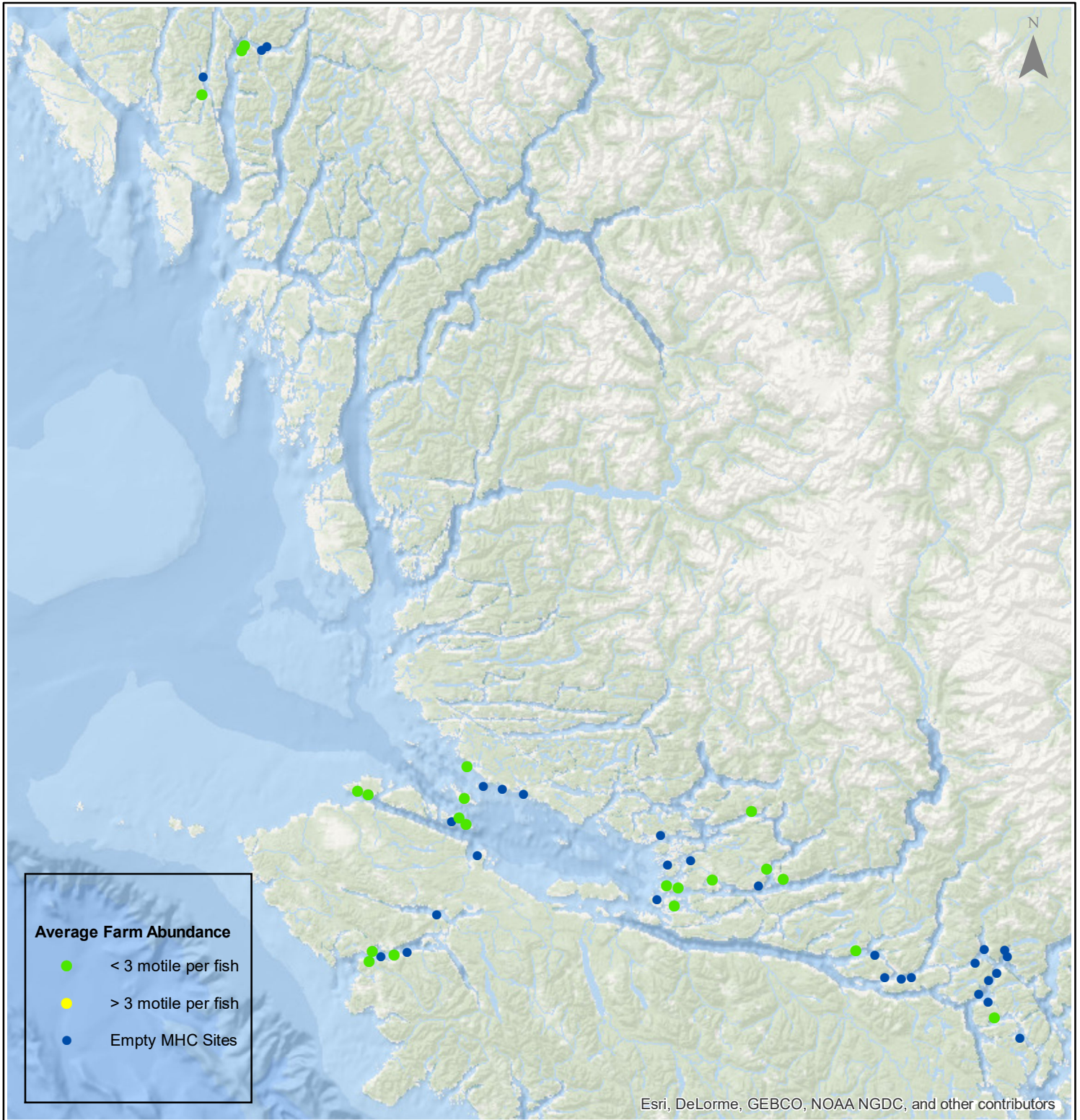


# Sea Lice Monitoring - Average Farm Abundance

## All Sites - February 2018



1:2,500,000



Esri, DeLorme, GEBCO, NOAA NGDC, and other contributors

0 15 30 60 90 120 Kilometers

Coordinate System: WGS 1984 Web Mercator Auxiliary Sphere

Author: BC Centre for Aquatic Health Sciences Society

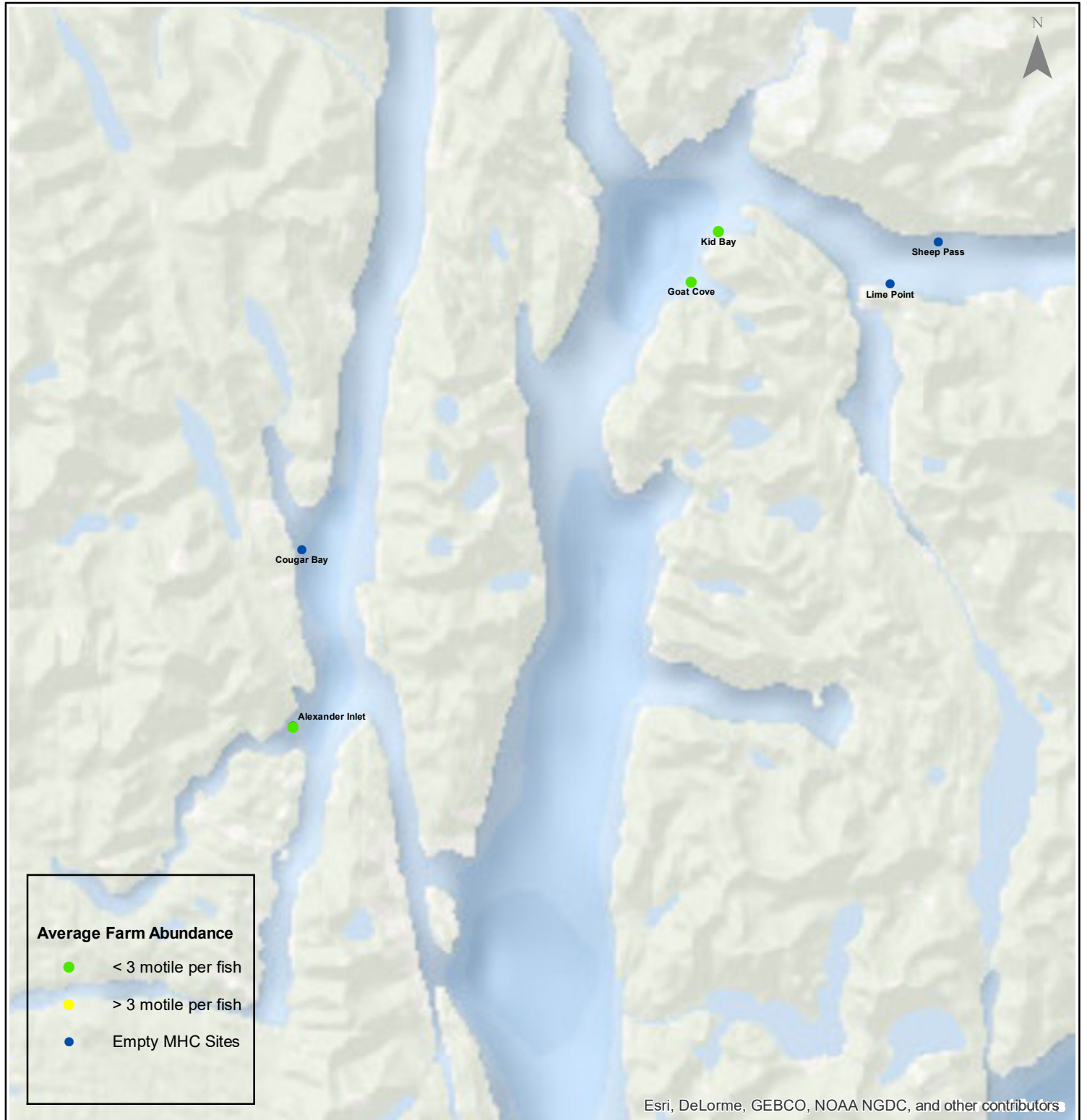
Date: 13 Mar 2018

# Sea Lice Monitoring - Average Farm Abundance

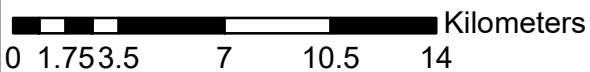
## *Klemtu - February 2018*



1:250,000



Esri, DeLorme, GEBCO, NOAA NGDC, and other contributors



Coordinate System: WGS 1984 Web Mercator Auxiliary Sphere

Author: BC Centre for Aquatic Health Sciences Society

Date: 13 Mar 2018

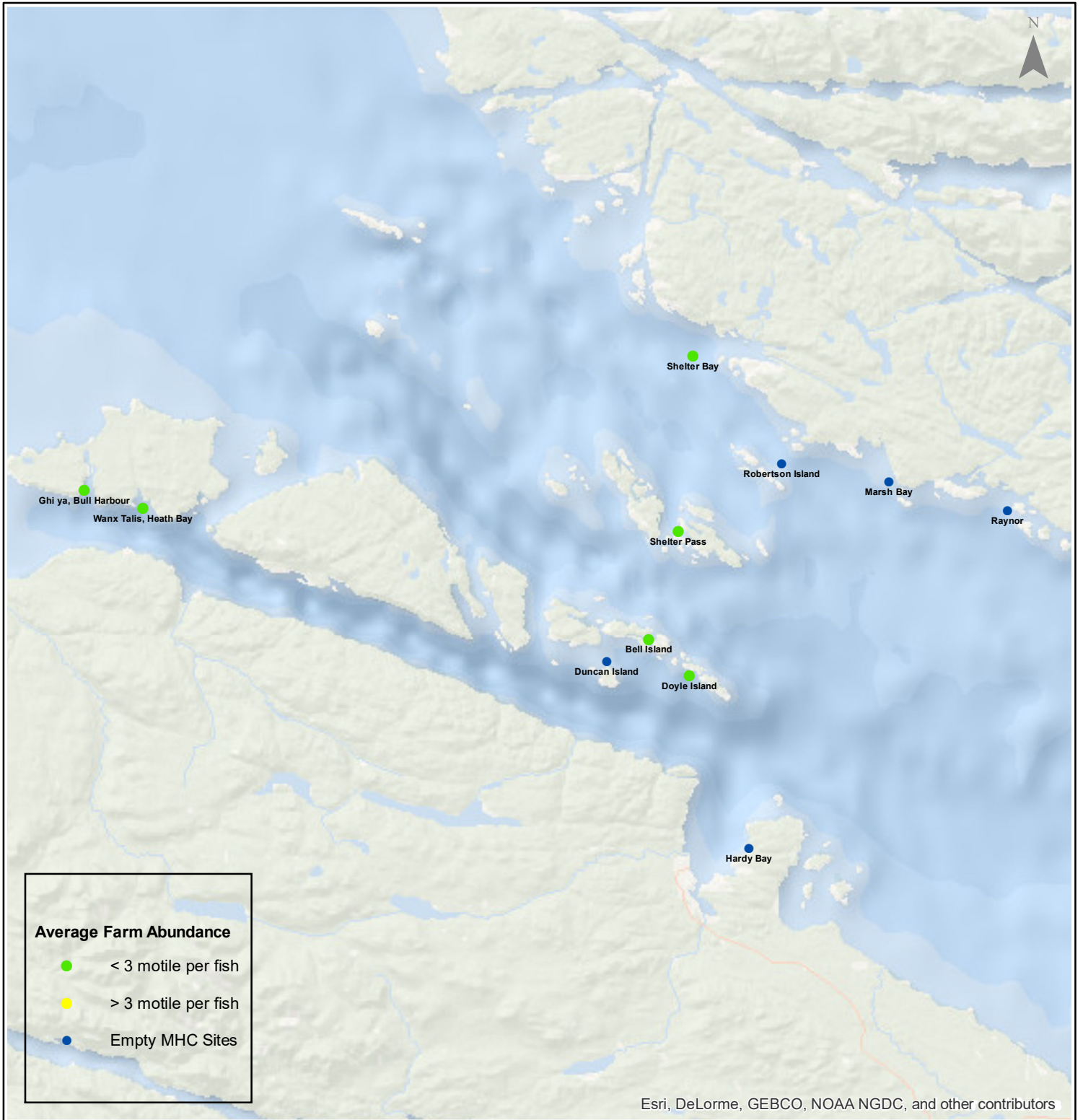


# Sea Lice Monitoring - Average Farm Abundance

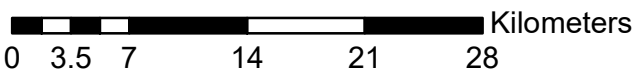
## Port Hardy - February 2018



1:450,000



Esri, DeLorme, GEBCO, NOAA NGDC, and other contributors



Coordinate System: WGS 1984 Web Mercator Auxiliary Sphere

Author: BC Centre for Aquatic Health Sciences Society

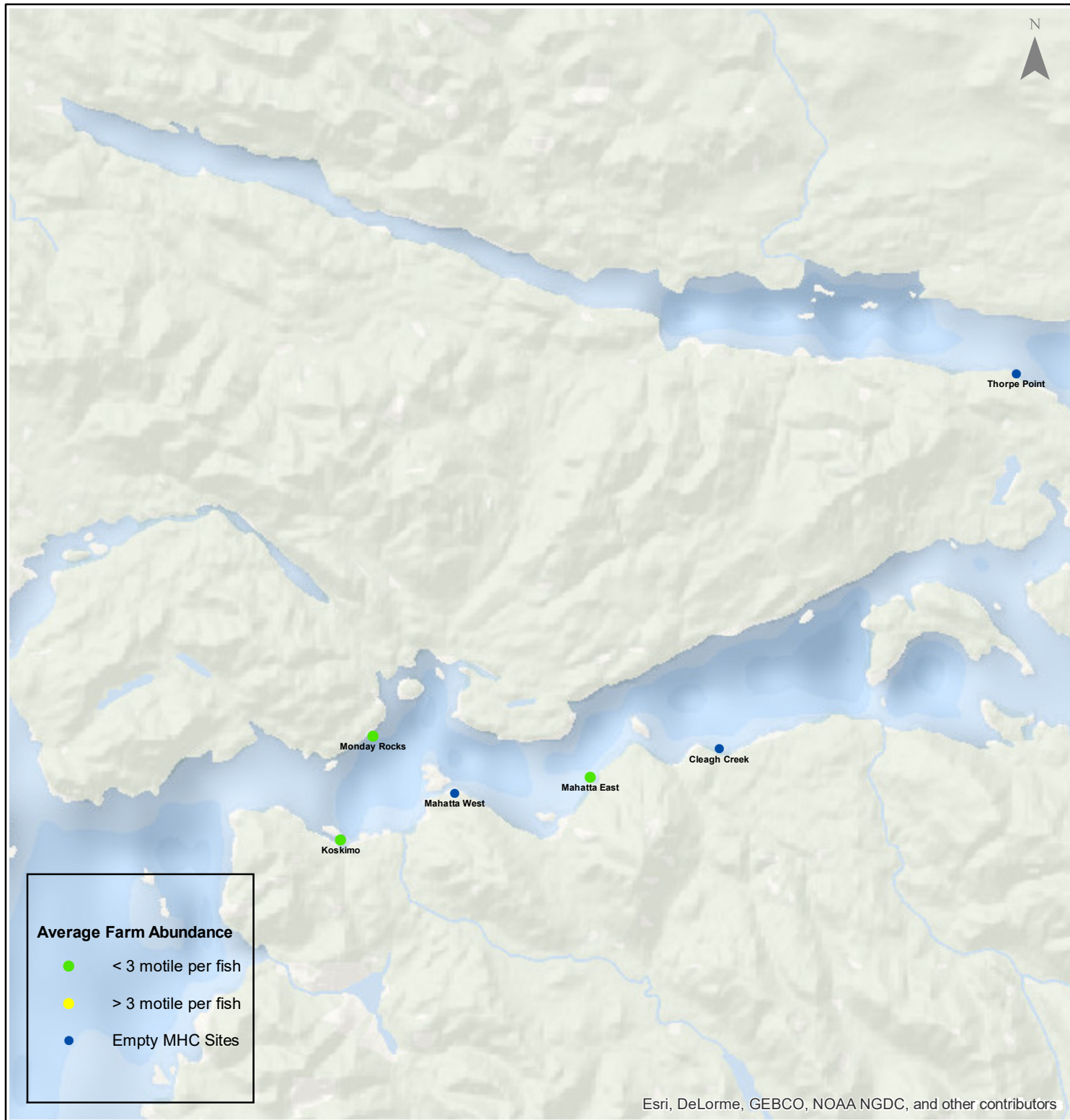
Date: 13 Mar 2018

# Sea Lice Monitoring - Average Farm Abundance

## Quatsino - February 2018



1:250,000



0 1.753.5 7 10.5 14 Kilometers

Coordinate System: WGS 1984 Web Mercator Auxiliary Sphere

Author: BC Centre for Aquatic Health Sciences Society

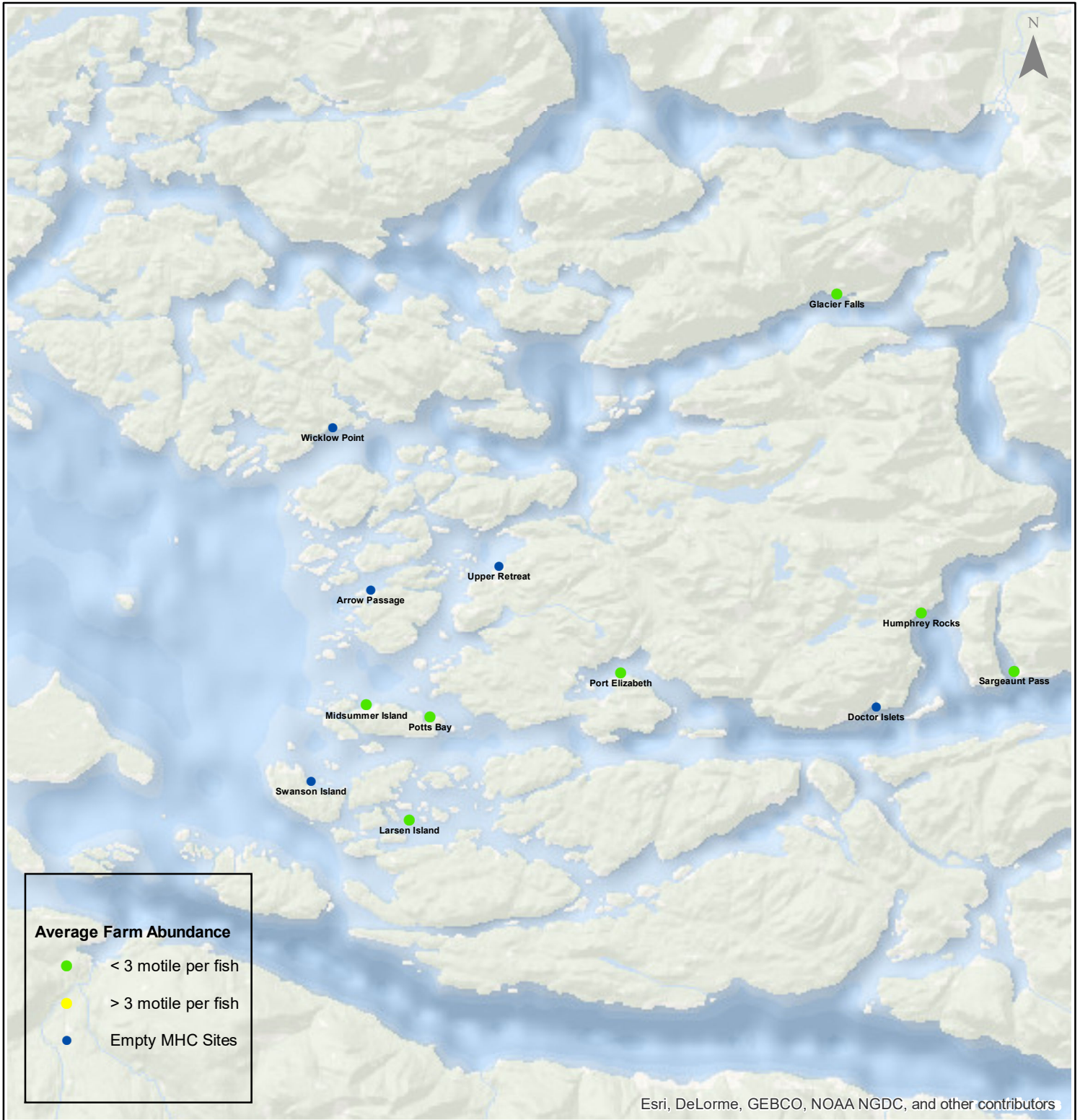
Date: 13 Mar 2018



# Sea Lice Monitoring - Average Farm Abundance *Broughton - February 2018*



1:450,000



Esri, DeLorme, GEBCO, NOAA NGDC, and other contributors

Coordinate System: WGS 1984 Web Mercator Auxiliary Sphere

Author: BC Centre for Aquatic Health Sciences Society

Date: 13 Mar 2018

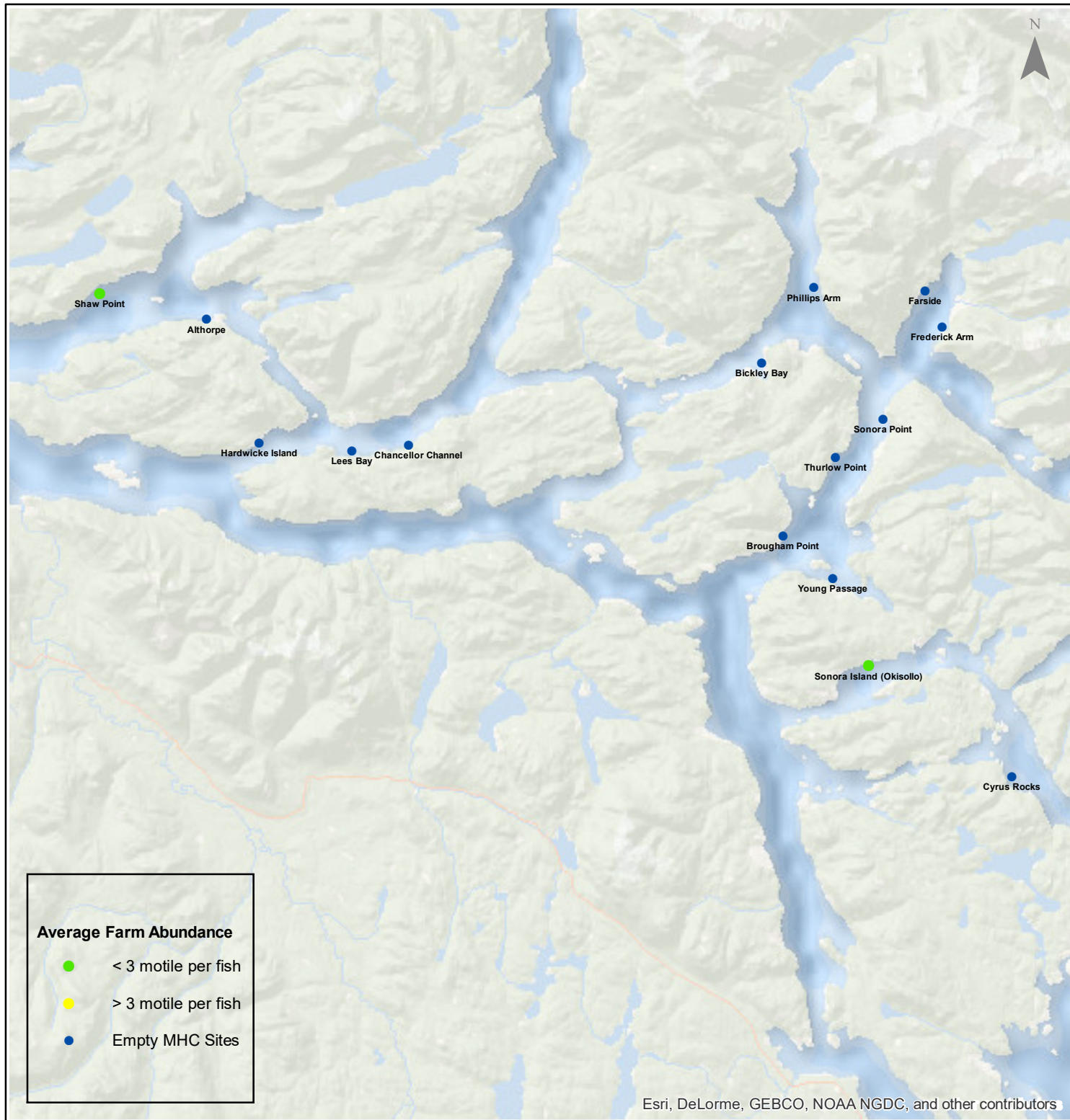
0 3.5 7 14 21 28 Kilometers

# Sea Lice Monitoring - Average Farm Abundance

## *Campbell River - February 2018*



1:450,000



Esri, DeLorme, GEBCO, NOAA NGDC, and other contributors

0 3.5 7 14 21 28 Kilometers

Coordinate System: WGS 1984 Web Mercator Auxiliary Sphere

Author: BC Centre for Aquatic Health Sciences Society

Date: 13 Mar 2018



Sea Lice Monitoring - Average Farm Abundance

SiteArea	Facility	Date Sampled	Motile L. salmonis	Memo	EMB* Rx Start Date	H2O2** Rx Start Date
Broughton	Arrow Passage	2 2018		Fallow		
Broughton	Doctor Islets	2 2018		Fallow		
Broughton	Glacier Falls	2 2018	2.01	SLICE	26-Feb-18	
Broughton	Humphrey Rocks	2 2018	1.14	SLICE	25-Feb-18	
Broughton	Larsen Island	2 2018	0.12			
Broughton	Midsummer Island	2 2018	2.43	SLICE	25-Feb-18	
Broughton	Port Elizabeth	2 2018	0.07			
Broughton	Potts Bay	2 2018	0.24	Fallow as of Feb 19, 2018	4-Dec-17	
Broughton	Sargeaunt Pass	2 2018	0.52	SLICE	25-Feb-18	
Broughton	Swanson Island	2 2018		Fallow		
Broughton	Upper Retreat	2 2018		Fallow		
Broughton	Wicklow Point	2 2018		Fallow as of Feb 4, 2018	28-Sep-17	
Campbell River	Althorpe	2 2018		Fallow as of Feb 18, 2018	30-Oct-17	
Campbell River	Bickley Bay	2 2018		Fallow		
Campbell River	Brougham Point	2 2018		Fallow		
Campbell River	Chancellor Channel	2 2018		Fallow		
Campbell River	Cyrus Rocks	2 2018		Fallow		
Campbell River	Dunsterville	2 2018		Fallow		
Campbell River	Egerton Creek	2 2018		Fallow		
Campbell River	Farside	2 2018		Fallow		
Campbell River	Frederick Arm	2 2018		Fallow		
Campbell River	Hardwicke Island	2 2018		Fallow		
Campbell River	Lees Bay	2 2018		Fallow		
Campbell River	Phillips Arm	2 2018		Fallow		
Campbell River	Read Island	2 2018		Fallow		
Campbell River	Shaw Point	2 2018	0.15			
Campbell River	Sonora Island (Okisollo)	2 2018	0.04		19-Nov-17	11-Aug-17
Campbell River	Sonora Point	2 2018		Fallow		
Campbell River	Thurlow Point	2 2018		Fallow		
Campbell River	Young Passage	2 2018		Fallow		
Klemtu	Alexander Inlet	2 2018	2.36	H202 planned for early March		31-Oct-17
Klemtu	Cougar Bay	2 2018		Fallow		
Klemtu	Goat Cove	2 2018	1.34			20-Oct-17
Klemtu	Kid Bay	2 2018	0.23			
Klemtu	Lime Point	2 2018		Fallow		
Klemtu	Sheep Pass	2 2018		Fallow		
Port Hardy	Bell Island	2 2018	0.10			
Port Hardy	Doyle Island	2 2018	0.00			
Port Hardy	Duncan Island	2 2018		Fallow		
Port Hardy	Ghi ya, Bull Harbour	2 2018	0.13		25-Oct-17	25-Jul-17
Port Hardy	Hardy Bay	2 2018		Fallow		
Port Hardy	Marsh Bay	2 2018		Fallow		
Port Hardy	Raynor	2 2018		Fallow		
Port Hardy	Robertson Island	2 2018		Fallow		
Port Hardy	Shelter Bay	2 2018	1.03			
Port Hardy	Shelter Pass	2 2018	0.01			
Port Hardy	Wanx Talis, Heath Bay	2 2018	0.02		19-Dec-17	20-Sep-17
Quatsino	Cleagh Creek	2 2018		Fallow		
Quatsino	Koskimo	2 2018	0.23		18-Nov-17	21-May-17
Quatsino	Mahatta East	2 2018	0.10		12-Nov-17	25-Apr-17
Quatsino	Mahatta West	2 2018		Fallow		
Quatsino	Monday Rocks	2 2018	0.05		18-Nov-17	7-May-17
Quatsino	Thorpe Point	2 2018		Fallow		

\*Emamectin Benzoate (Brand Name SLICE )

\*\* Hydrogen Peroxide (Brand Name Interlox Paramove 50 )

