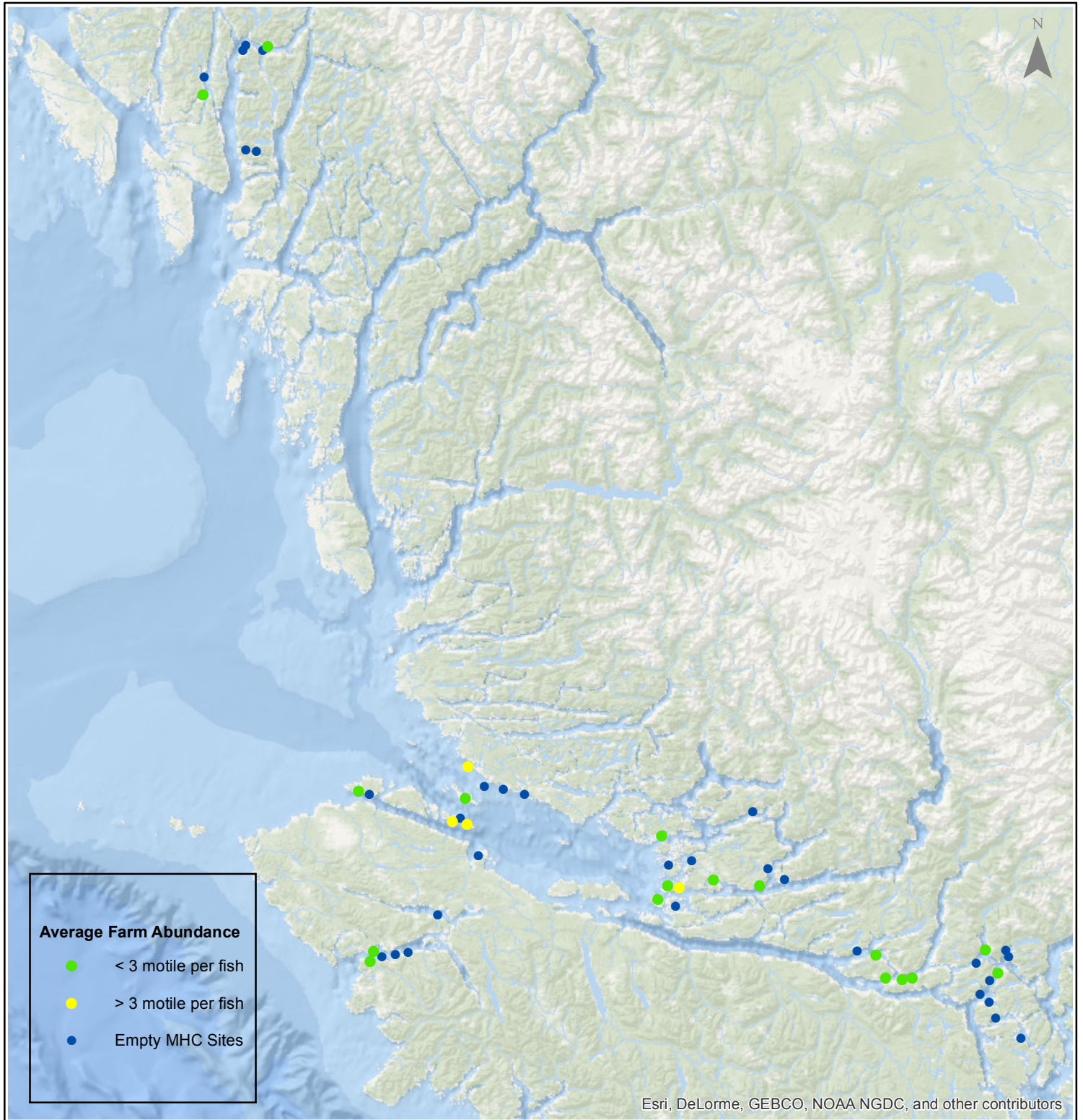


Sea Lice Monitoring - Average Farm Abundance

All Sites - February 2017



1:2,500,000



Esri, DeLorme, GEBCO, NOAA NGDC, and other contributors

0 15 30 60 90 120 Kilometers

Coordinate System: WGS 1984 Web Mercator Auxiliary Sphere

Author: BC Centre for Aquatic Health Sciences Society

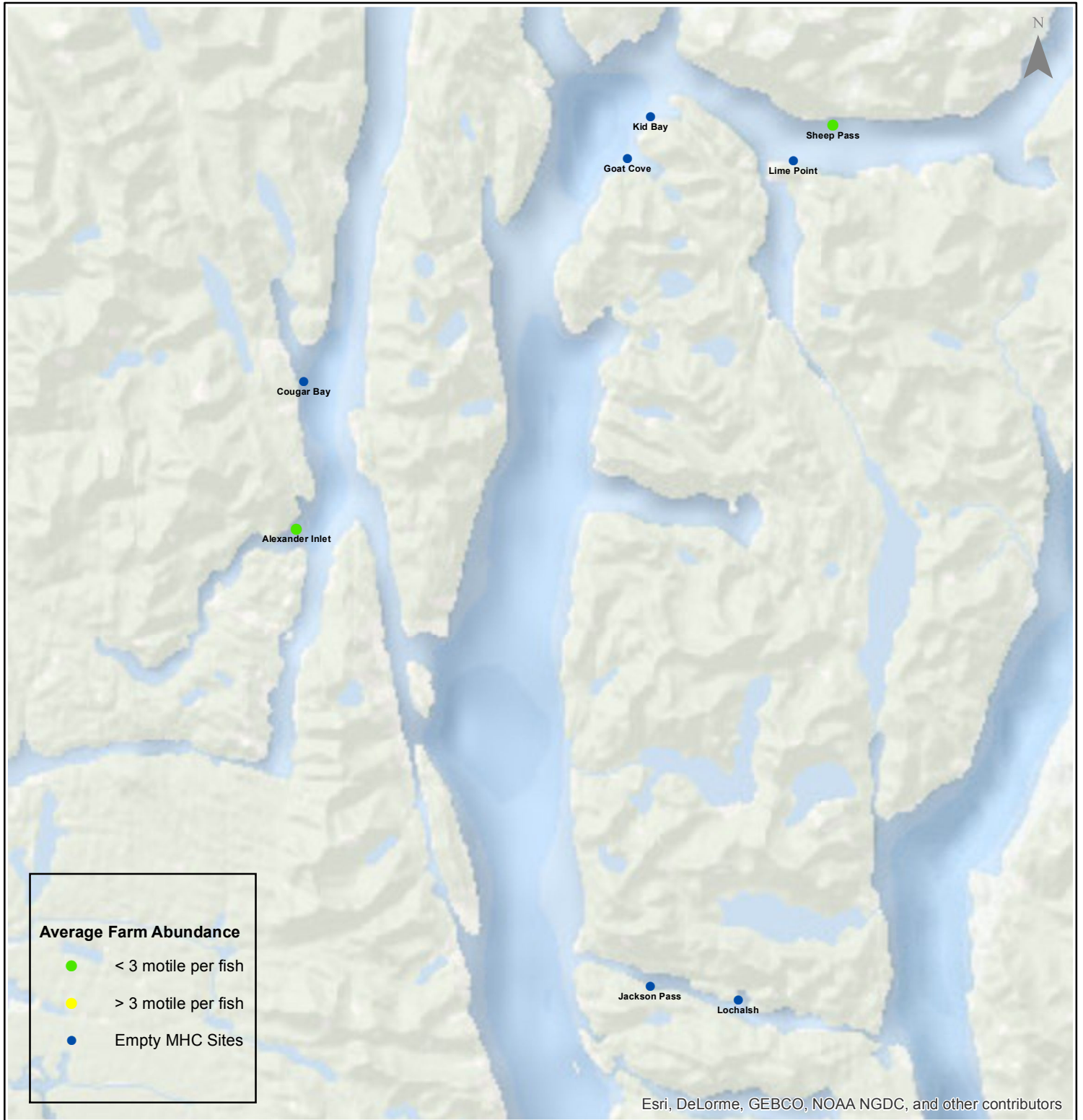
Date: 03/14/2017

Sea Lice Monitoring - Average Farm Abundance

Klemtu - February 2017



1:300,000



Esri, DeLorme, GEBCO, NOAA NGDC, and other contributors

0 2.25 4.5 9 13.5 18 Kilometers

Coordinate System: WGS 1984 Web Mercator Auxiliary Sphere

Author: BC Centre for Aquatic Health Sciences Society

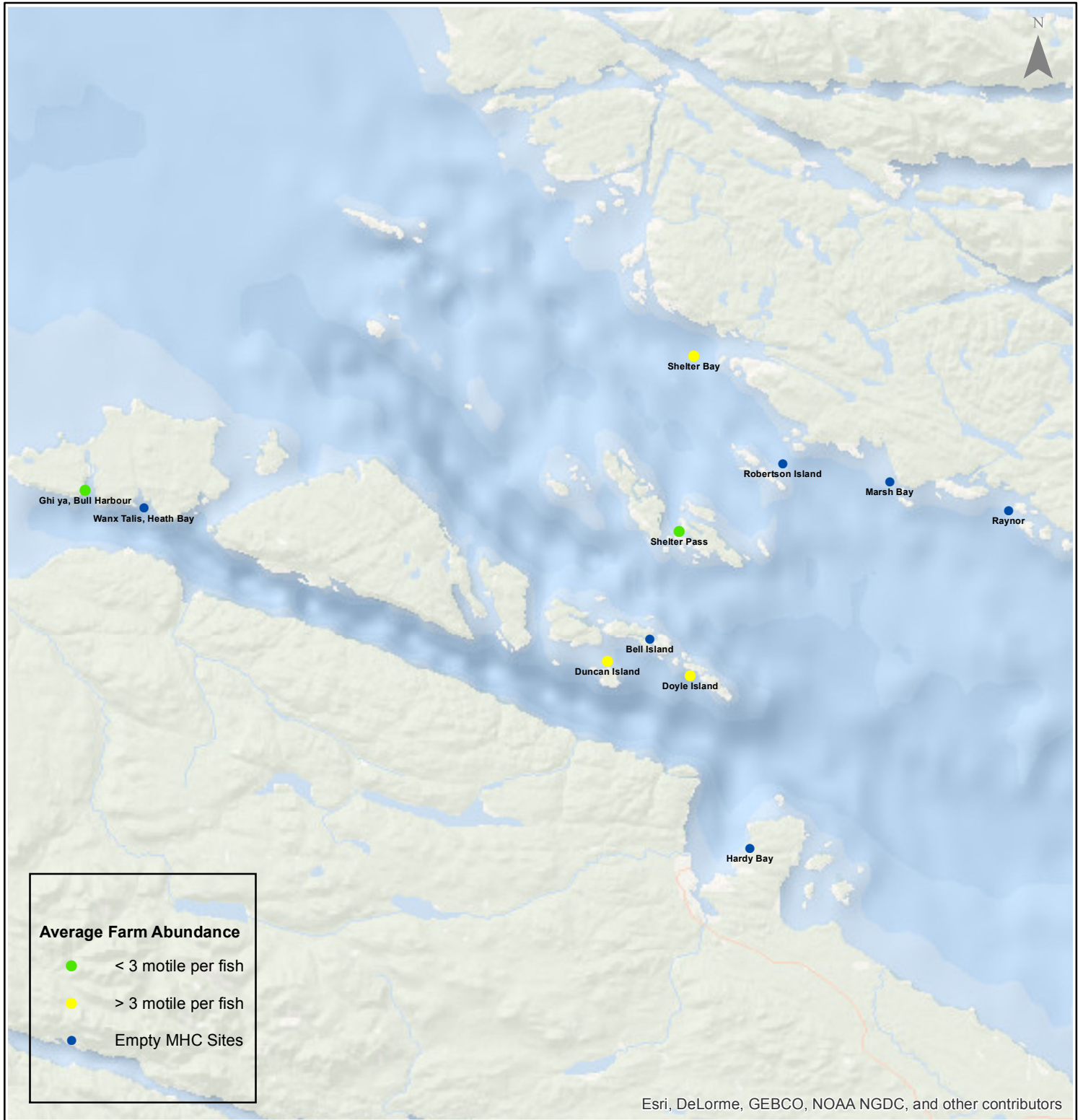
Date: 03/14/2017

Sea Lice Monitoring - Average Farm Abundance

Port Hardy - February 2017



1:450,000



Average Farm Abundance

- < 3 motile per fish
- > 3 motile per fish
- Empty MHC Sites

Esri, DeLorme, GEBCO, NOAA NGDC, and other contributors

0 3.5 7 14 21 28 Kilometers

Coordinate System: WGS 1984 Web Mercator Auxiliary Sphere

Author: BC Centre for Aquatic Health Sciences Society

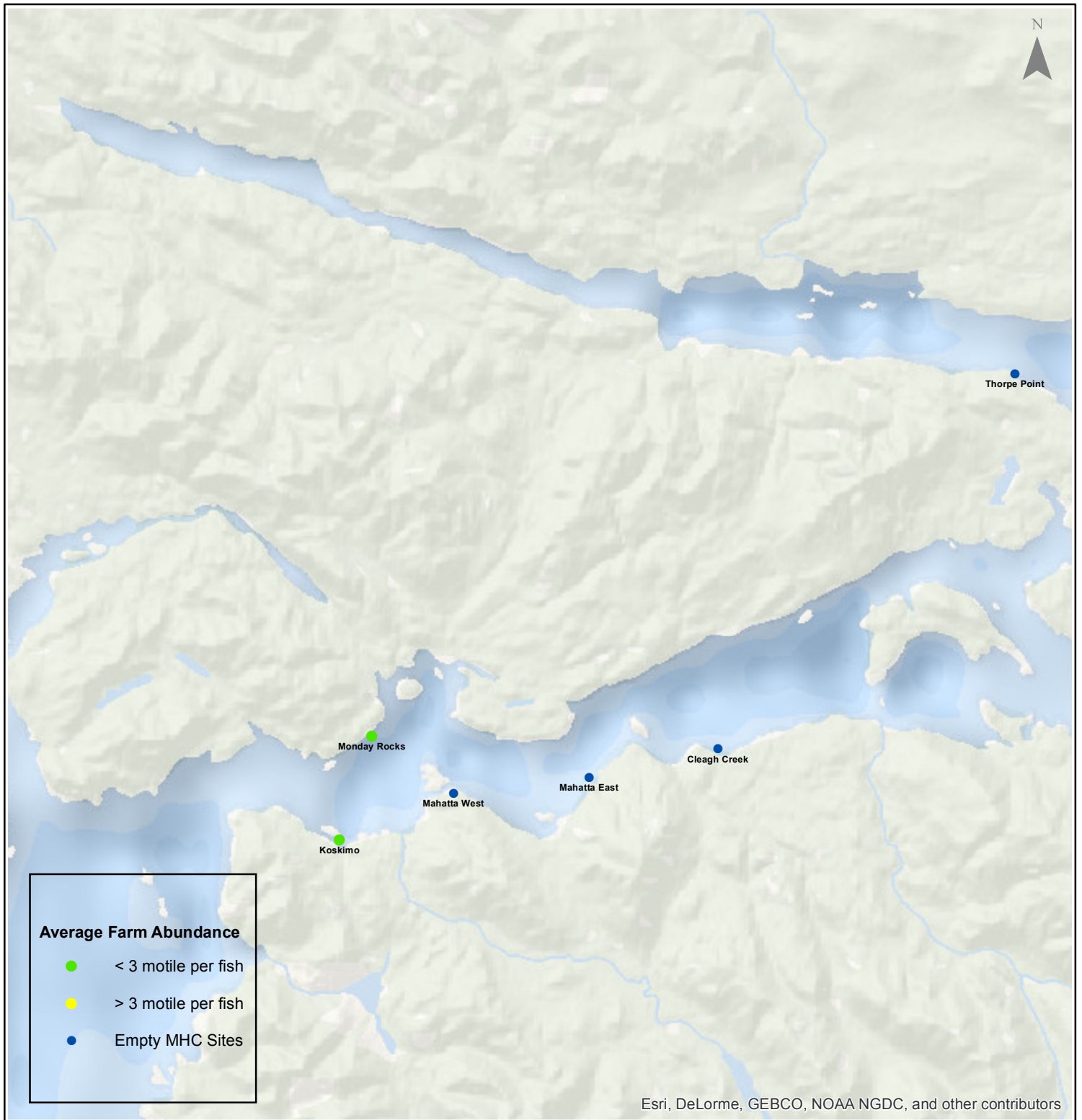
Date: 03/14/2017

Sea Lice Monitoring - Average Farm Abundance

Quatsino - February 2017



1:250,000



Esri, DeLorme, GEBCO, NOAA NGDC, and other contributors

0 1.753.5 7 10.5 14 Kilometers

Coordinate System: WGS 1984 Web Mercator Auxiliary Sphere

Author: BC Centre for Aquatic Health Sciences Society

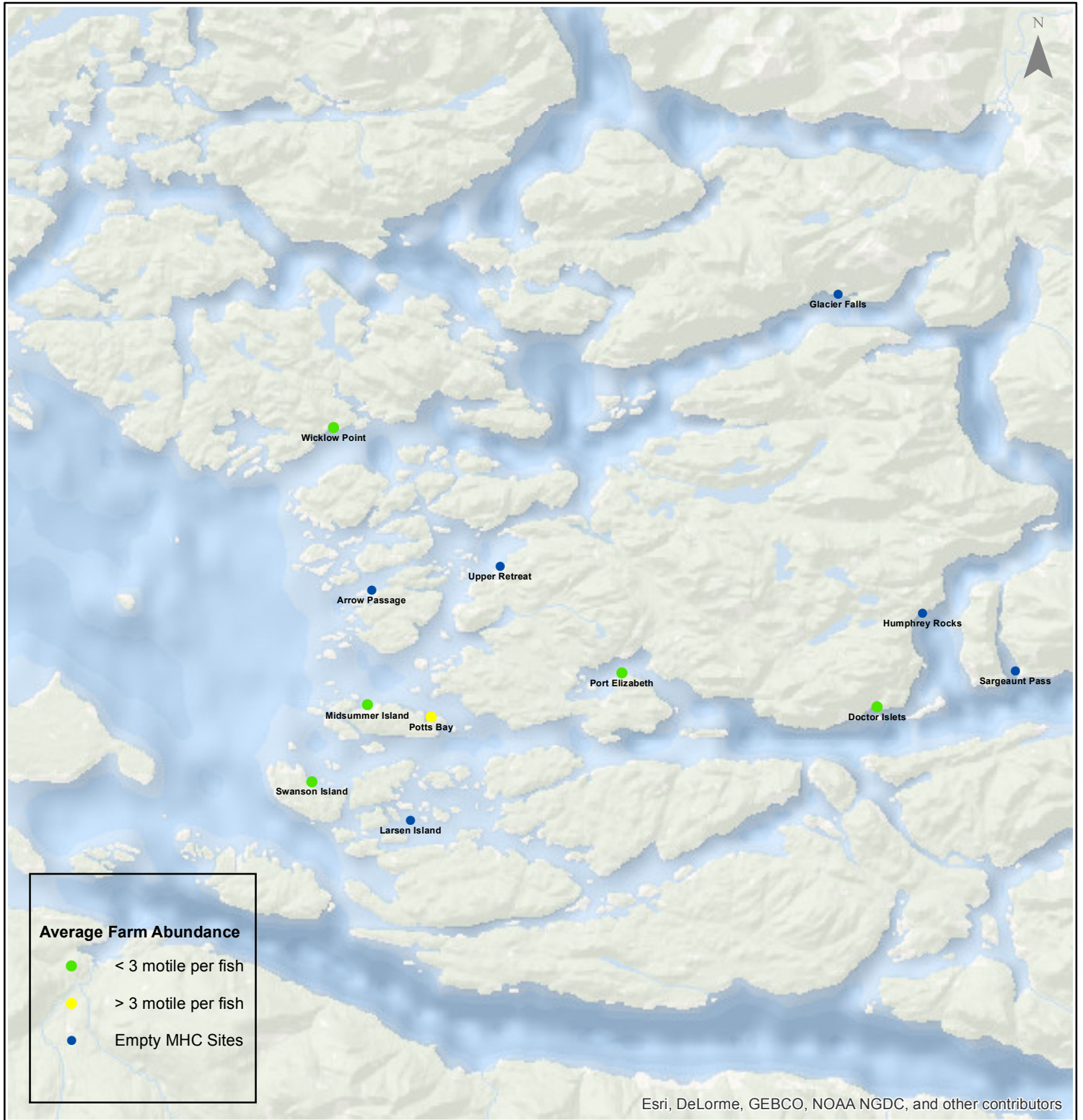
Date: 03/14/2017

Sea Lice Monitoring - Average Farm Abundance

Broughton - February 2017



1:450,000



Average Farm Abundance

- < 3 motile per fish
- > 3 motile per fish
- Empty MHC Sites

Esri, DeLorme, GEBCO, NOAA NGDC, and other contributors

0 3.5 7 14 21 28 Kilometers

Coordinate System: WGS 1984 Web Mercator Auxiliary Sphere

Author: BC Centre for Aquatic Health Sciences Society

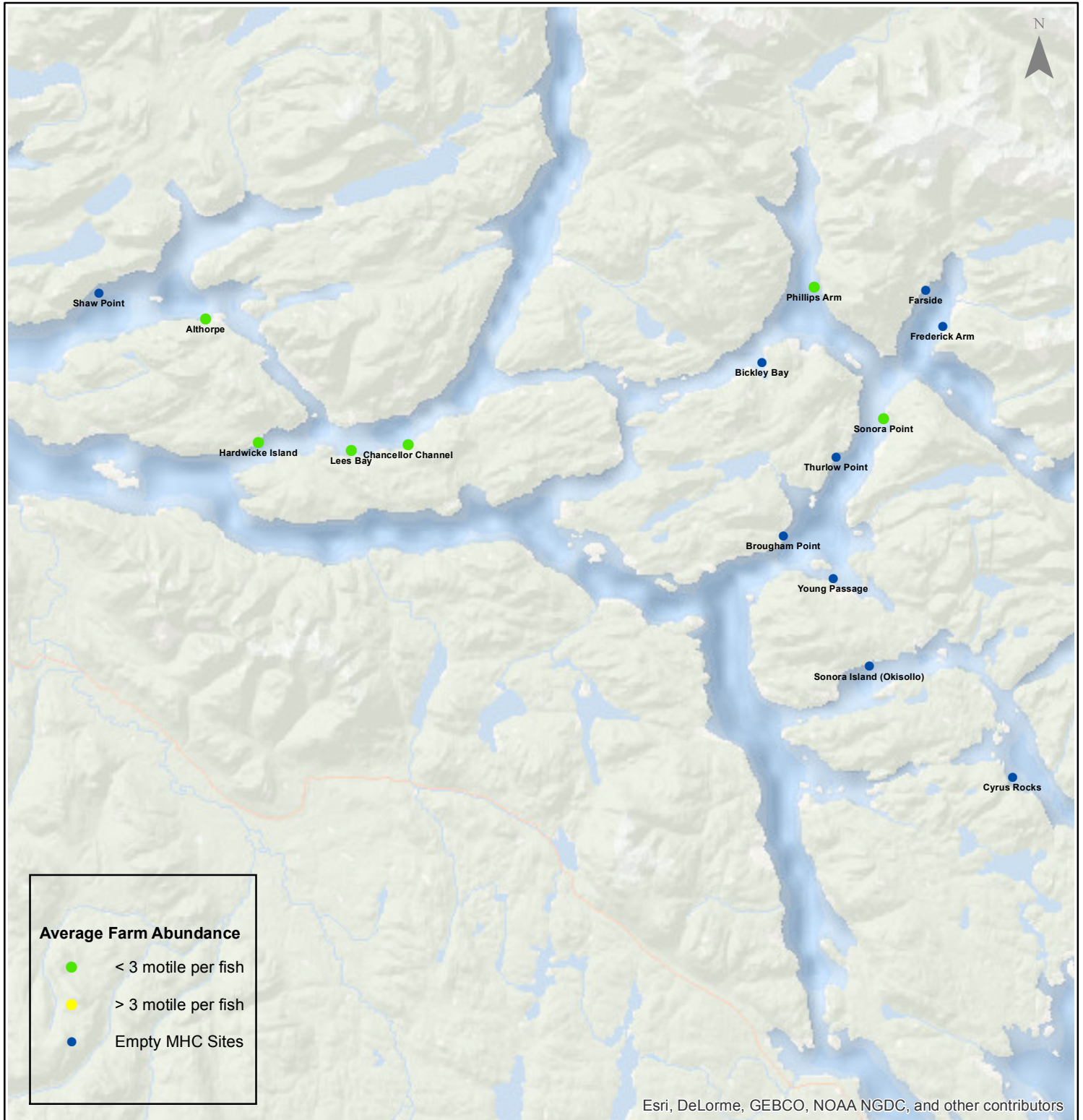
Date: 03/14/2017

Sea Lice Monitoring - Average Farm Abundance

Campbell River - February 2017



1:450,000



Average Farm Abundance

- < 3 motile per fish
- > 3 motile per fish
- Empty MHC Sites

Esri, DeLorme, GEBCO, NOAA NGDC, and other contributors

0 3.5 7 14 21 28 Kilometers

Coordinate System: WGS 1984 Web Mercator Auxiliary Sphere

Author: BC Centre for Aquatic Health Sciences Society

Date: 03/14/2017

Sea Lice Monitoring - Average Farm Abundance

SiteArea	Facility	Date Sampled	Motile <i>L. salmonis</i>	Memo	EMB* Rx Start Date	H2O2** Rx Start Date
Broughton	Arrow Passage	2 2017		Fallow		
Broughton	Doctor Islets	2 2017	1.38	SLICE	11-Feb-17	
Broughton	Glacier Falls	2 2017		Fallow		
Broughton	Humphrey Rocks	2 2017		Fallow		
Broughton	Larsen Island	2 2017		Fallow		
Broughton	Midsummer Island	2 2017	2.57		25-Jan-17	
Broughton	Port Elizabeth	2 2017	0.00			
Broughton	Potts Bay	2 2017	3.97	SLICE	1-Feb-17	
Broughton	Sargeant Pass	2 2017		no counts as undergoing treatment for mouth rot		
Broughton	Swanson Island	2 2017	0.50		17-Jan-17	
Broughton	Upper Retreat	2 2017		Fallow		
Broughton	Wicklow Point	2 2017	0.28		3-Jan-17	
Campbell River	Althorpe	2 2017	0.75		19-Jan-17	
Campbell River	Bickley Bay	2 2017		Fallow		
Campbell River	Brougham Point	2 2017		Fallow		
Campbell River	Chancellor Channel	2 2017	0.36		21-Nov-16	
Campbell River	Cyrus Rocks	2 2017		Fallow		
Campbell River	Dunsterville	2 2017		Fallow		
Campbell River	Egerton Creek	2 2017		Fallow		
Campbell River	Farside	2 2017		Fallow		
Campbell River	Frederick Arm	2 2017		Fallow		
Campbell River	Hardwicke Island	2 2017	0.17		21-Nov-16	
Campbell River	Lees Bay	2 2017	0.38		20-Nov-16	10-May-16
Campbell River	Phillips Arm	2 2017	0.67		5-Dec-16	
Campbell River	Read Island	2 2017		Fallow		
Campbell River	Shaw Point	2 2017		Fallow		
Campbell River	Sonora Island (Okisollo)	2 2017		Fallow		
Campbell River	Sonora Point	2 2017	0.65		24-Dec-16	5-Aug-16
Campbell River	Thurlow Point	2 2017		Fallow		
Campbell River	Young Passage	2 2017		Fallow		
Klemtu	Alexander Inlet	2 2017	0.94			
Klemtu	Cougar Bay	2 2017		Fallow		
Klemtu	Goat Cove	2 2017		Fallow		
Klemtu	Jackson Pass	2 2017		Fallow		
Klemtu	Kid Bay	2 2017		Fallow		
Klemtu	Lime Point	2 2017		Fallow		
Klemtu	Lochalsh	2 2017		Fallow		
Klemtu	Sheep Pass	2 2017	2.25	H2O2 treatments and harvesting ongoing	22-Jun-16	25-Jan-17
Port Hardy	Bell Island	2 2017		Fallow		
Port Hardy	Doyle Island	2 2017	4.05	SLICE to start first week of March		20-Nov-16
Port Hardy	Duncan Island	2 2017	4.17	SLICE	25-Feb-17	27-Sep-16
Port Hardy	Ghi ya, Bull Harbour	2 2017	1.89	harvesting and expected to be empty by mid March.	16-Jul-16	21-Mar-16
Port Hardy	Hardy Bay	2 2017		Fallow		
Port Hardy	Marsh Bay	2 2017		Fallow		
Port Hardy	Raynor	2 2017		Fallow		
Port Hardy	Robertson Island	2 2017		Fallow		
Port Hardy	Shelter Bay	1 2017	3.62	Fallow as of Feb 13, 2017	1-Mar-16	
Port Hardy	Shelter Pass	2 2017	2.68	SLICE to start first week of March		
Port Hardy	Wanx Talis, Heath Bay	2 2017		Fallow		
Quatsino	Cleagh Creek	2 2017		Fallow		
Quatsino	Koskimo	2 2017	0.26			
Quatsino	Mahatta East	2 2017		Fallow		
Quatsino	Mahatta West	2 2017		Fallow		
Quatsino	Monday Rocks	2 2017	0.10			
Quatsino	Thorpe Point	2 2017		Fallow		

*Enamectin Benzoate (Brand Name *SLICE*)

** Hydrogen Peroxide (Brand Name *Interox Paramove 50*)

