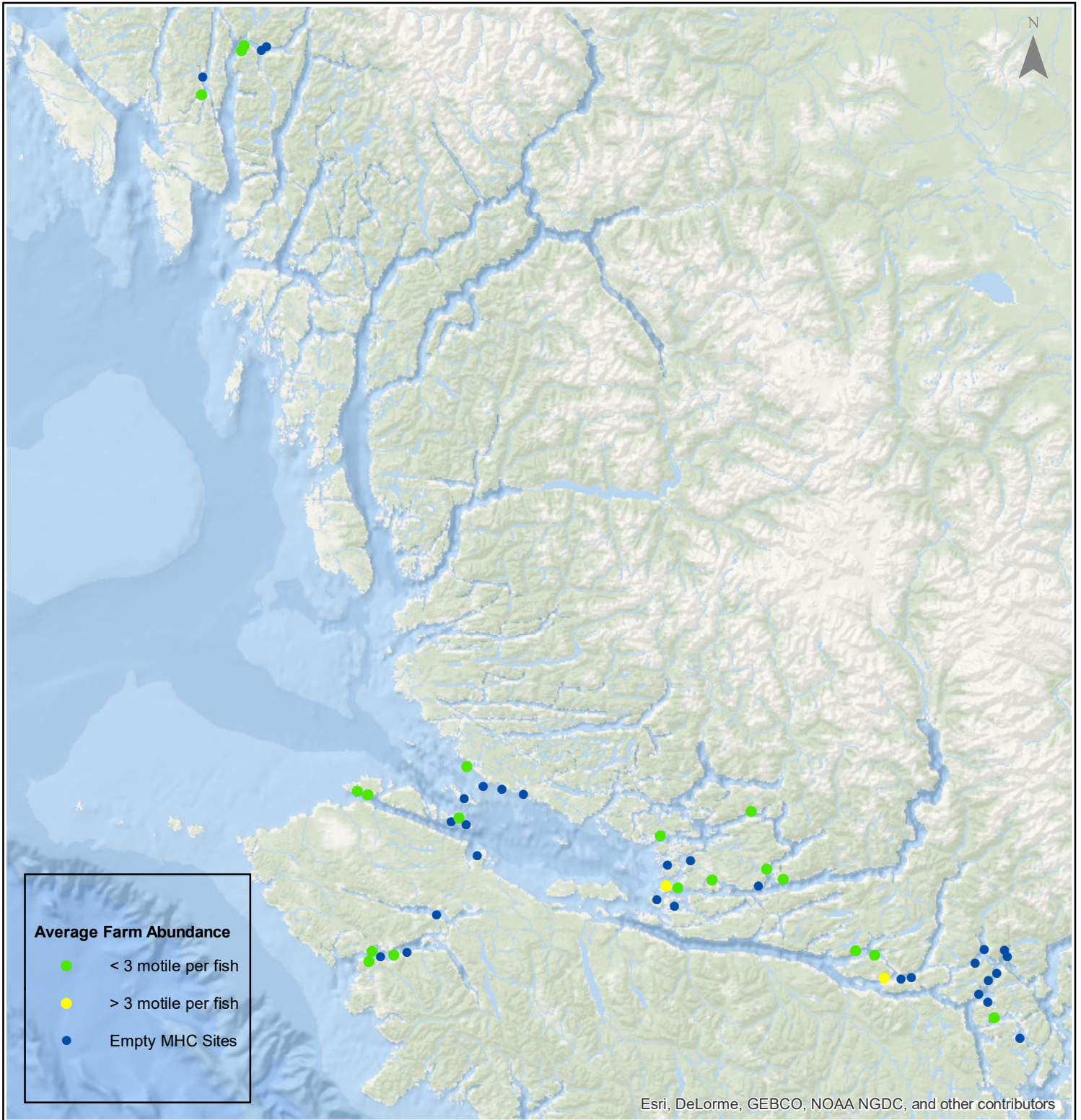


# Sea Lice Monitoring - Average Farm Abundance

## All Sites - December 2017



1:2,500,000



Esri, DeLorme, GEBCO, NOAA NGDC, and other contributors

0 15 30 60 90 120 Kilometers

Coordinate System: WGS 1984 Web Mercator Auxiliary Sphere

Author: BC Centre for Aquatic Health Sciences Society

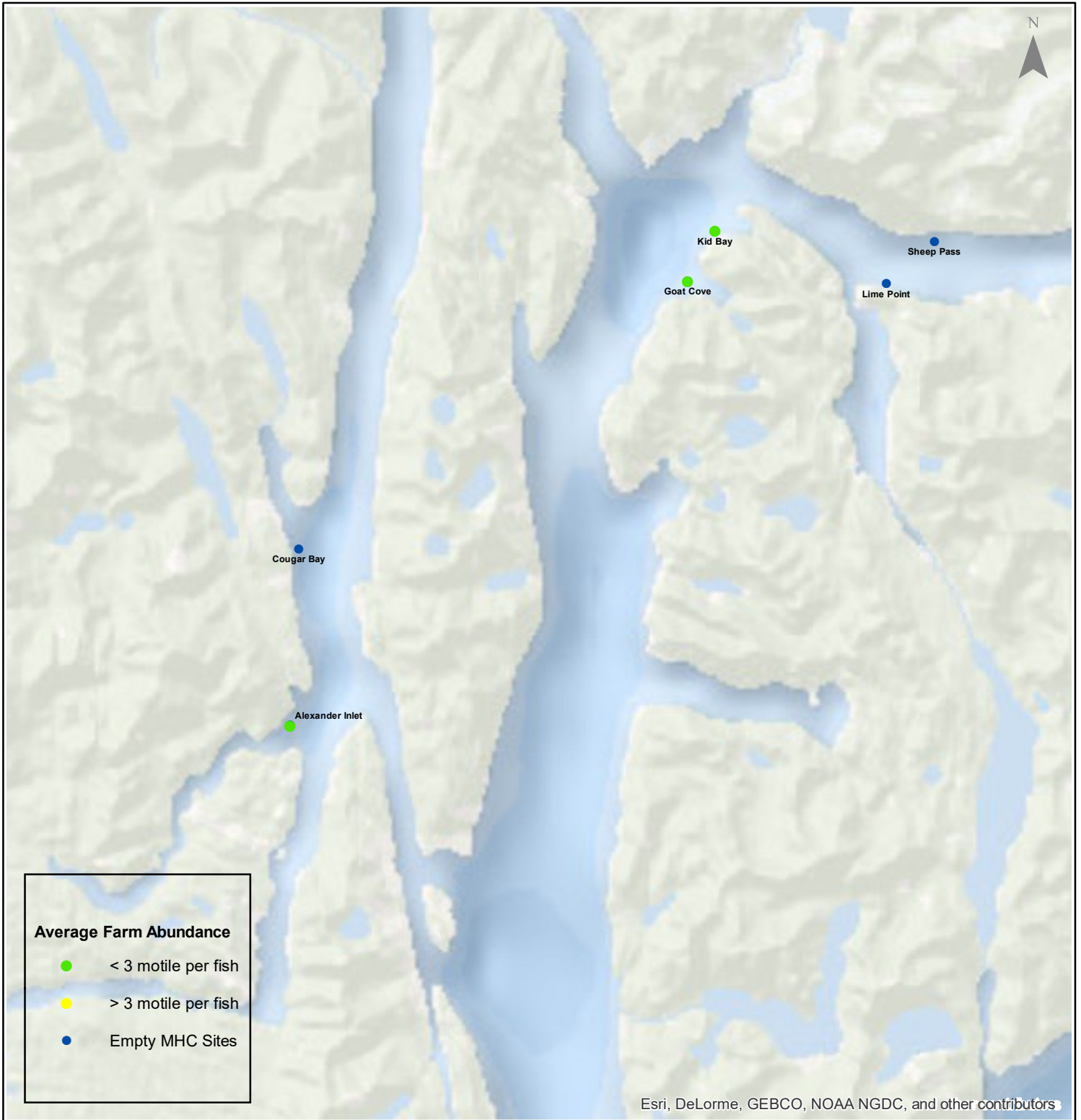
Date: 01/14/2018

# Sea Lice Monitoring - Average Farm Abundance

## *Klemtu - December 2017*



1:250,000



Esri, DeLorme, GEBCO, NOAA NGDC, and other contributors

0 1.75 3.5 7 10.5 14 Kilometers

Coordinate System: WGS 1984 Web Mercator Auxiliary Sphere

Author: BC Centre for Aquatic Health Sciences Society

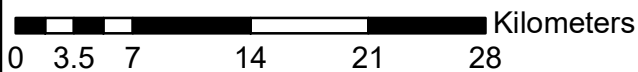
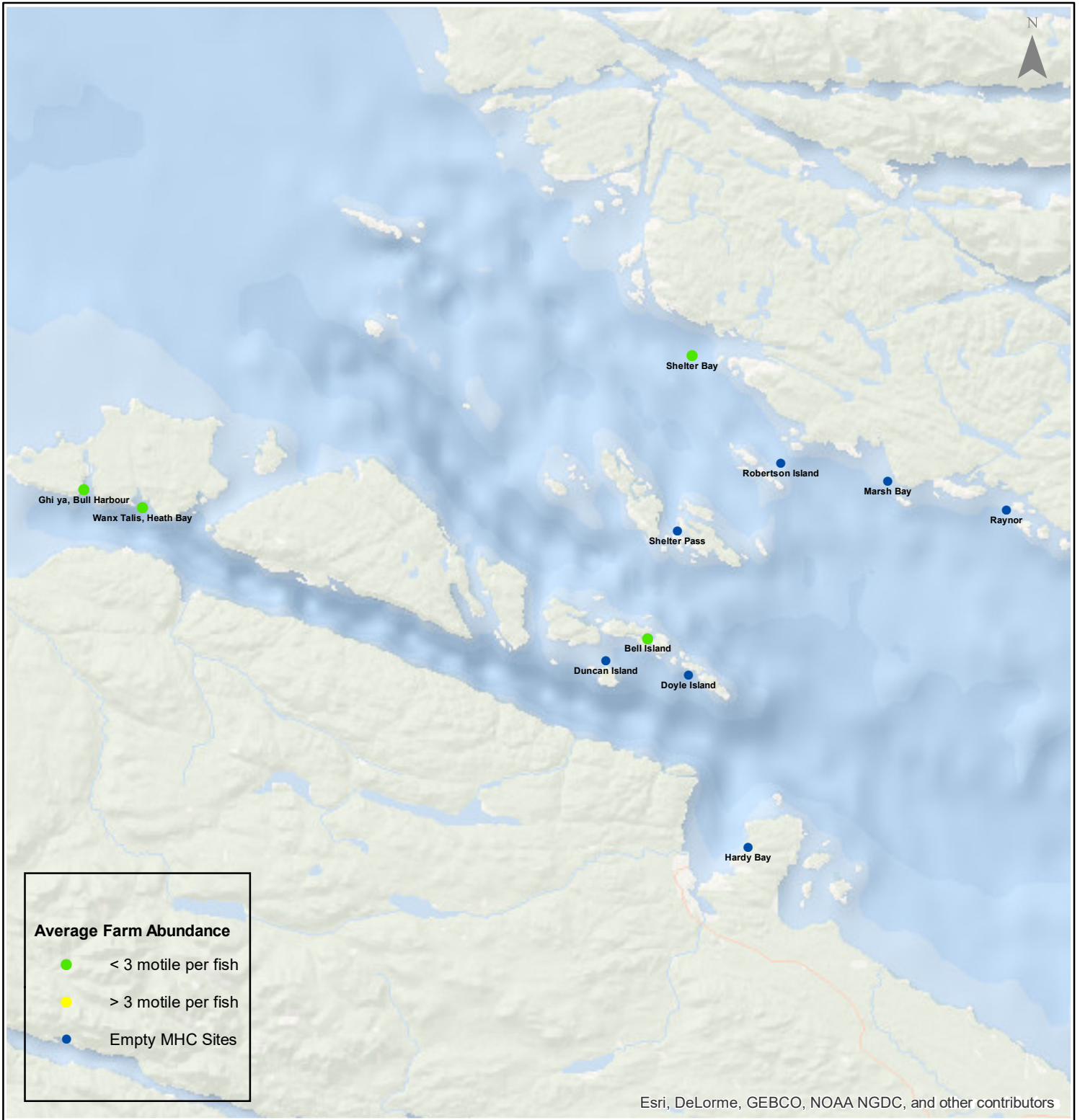
Date: 01/14/2018

# Sea Lice Monitoring - Average Farm Abundance

## Port Hardy - December 2017



1:450,000



Coordinate System: WGS 1984 Web Mercator Auxiliary Sphere

Author: BC Centre for Aquatic Health Sciences Society

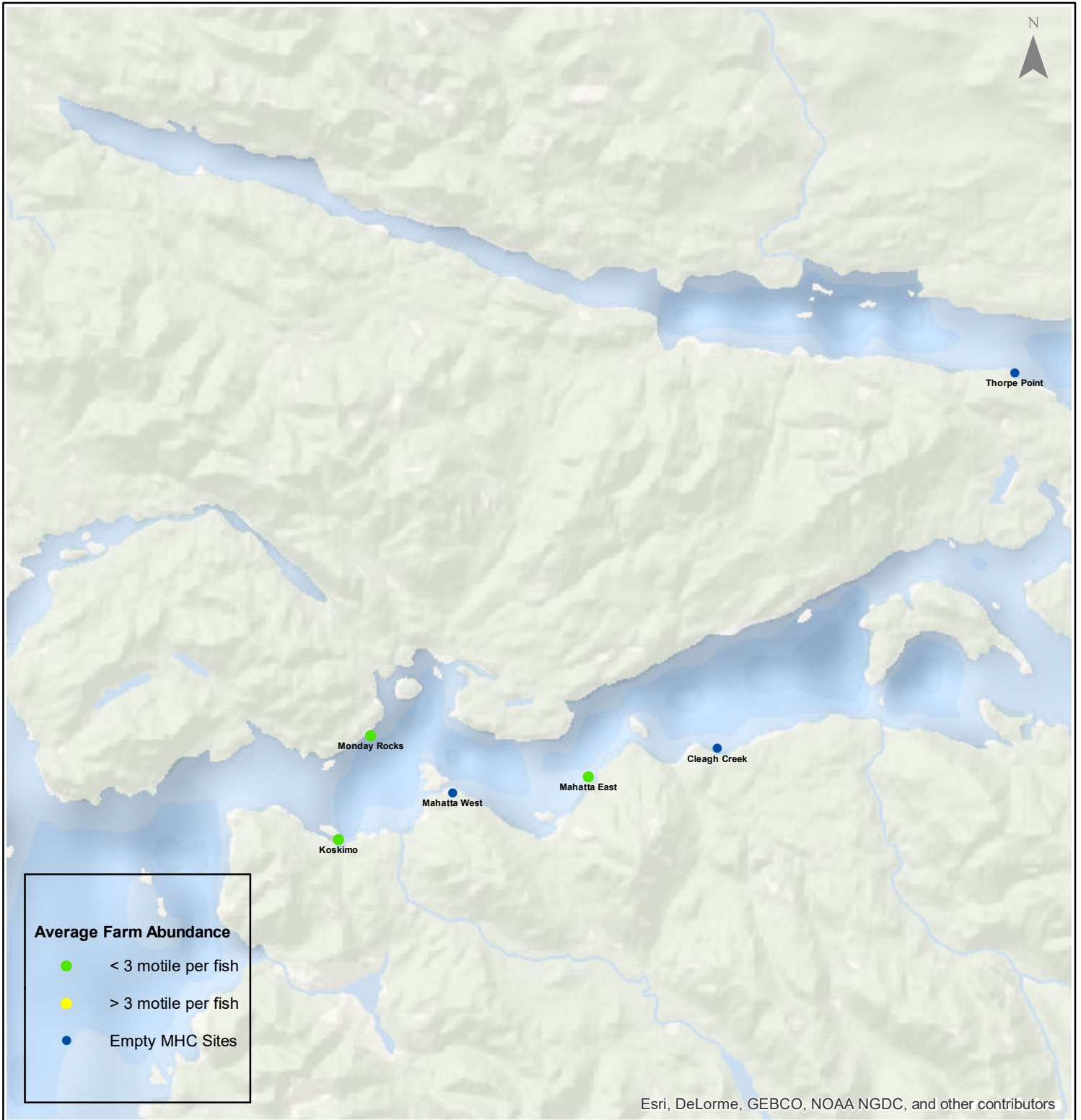
Date: 01/14/2018

# Sea Lice Monitoring - Average Farm Abundance

## Quatsino - December 2017



1:250,000



Esri, DeLorme, GEBCO, NOAA NGDC, and other contributors

0 1.753.5 7 10.5 14 Kilometers

Coordinate System: WGS 1984 Web Mercator Auxiliary Sphere

Author: BC Centre for Aquatic Health Sciences Society

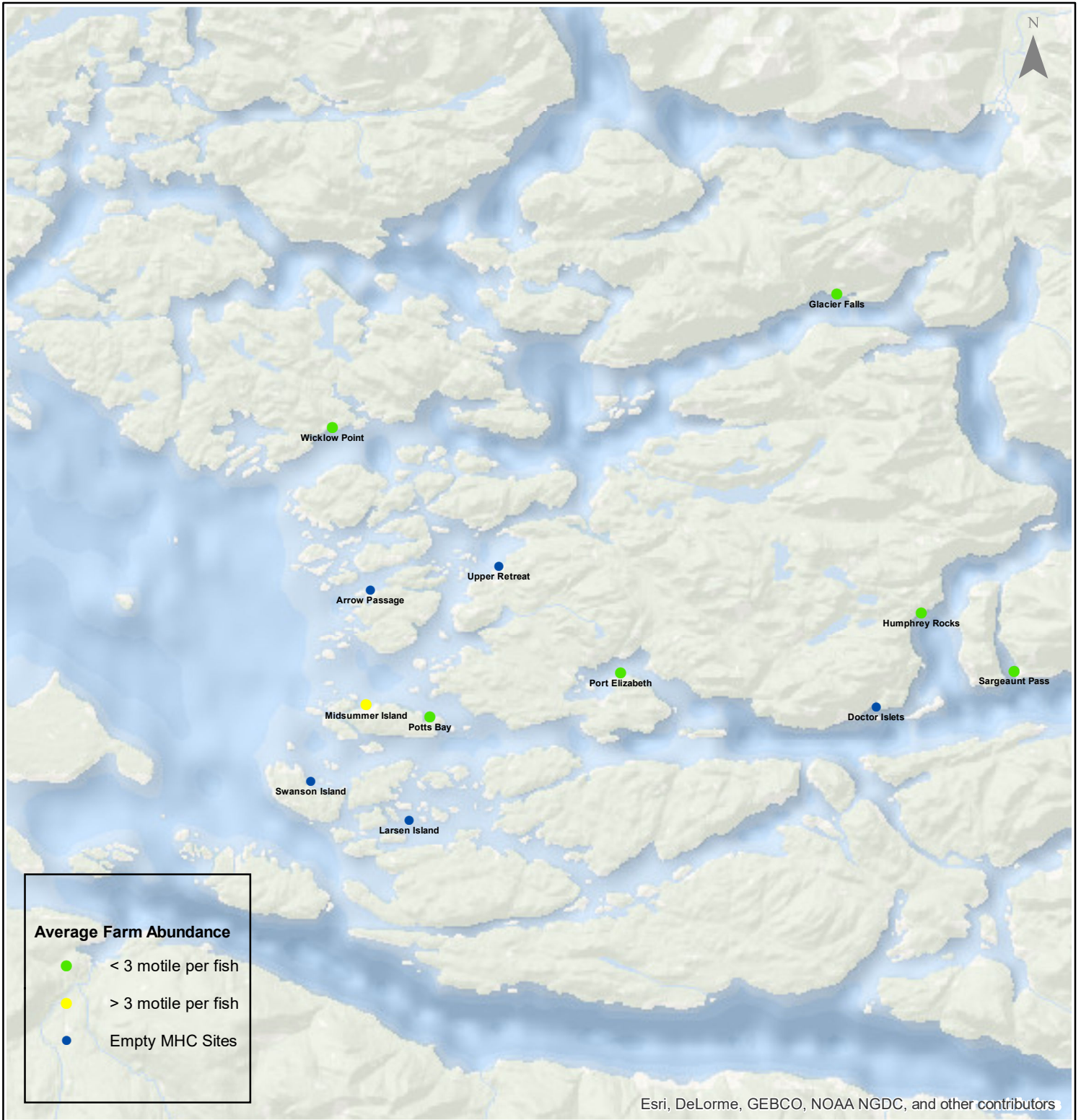
Date: 01/14/2018

# Sea Lice Monitoring - Average Farm Abundance

## *Broughton - December 2017*



1:450,000



Esri, DeLorme, GEBCO, NOAA NGDC, and other contributors

0 3.5 7 14 21 28 Kilometers

Coordinate System: WGS 1984 Web Mercator Auxiliary Sphere

Author: BC Centre for Aquatic Health Sciences Society

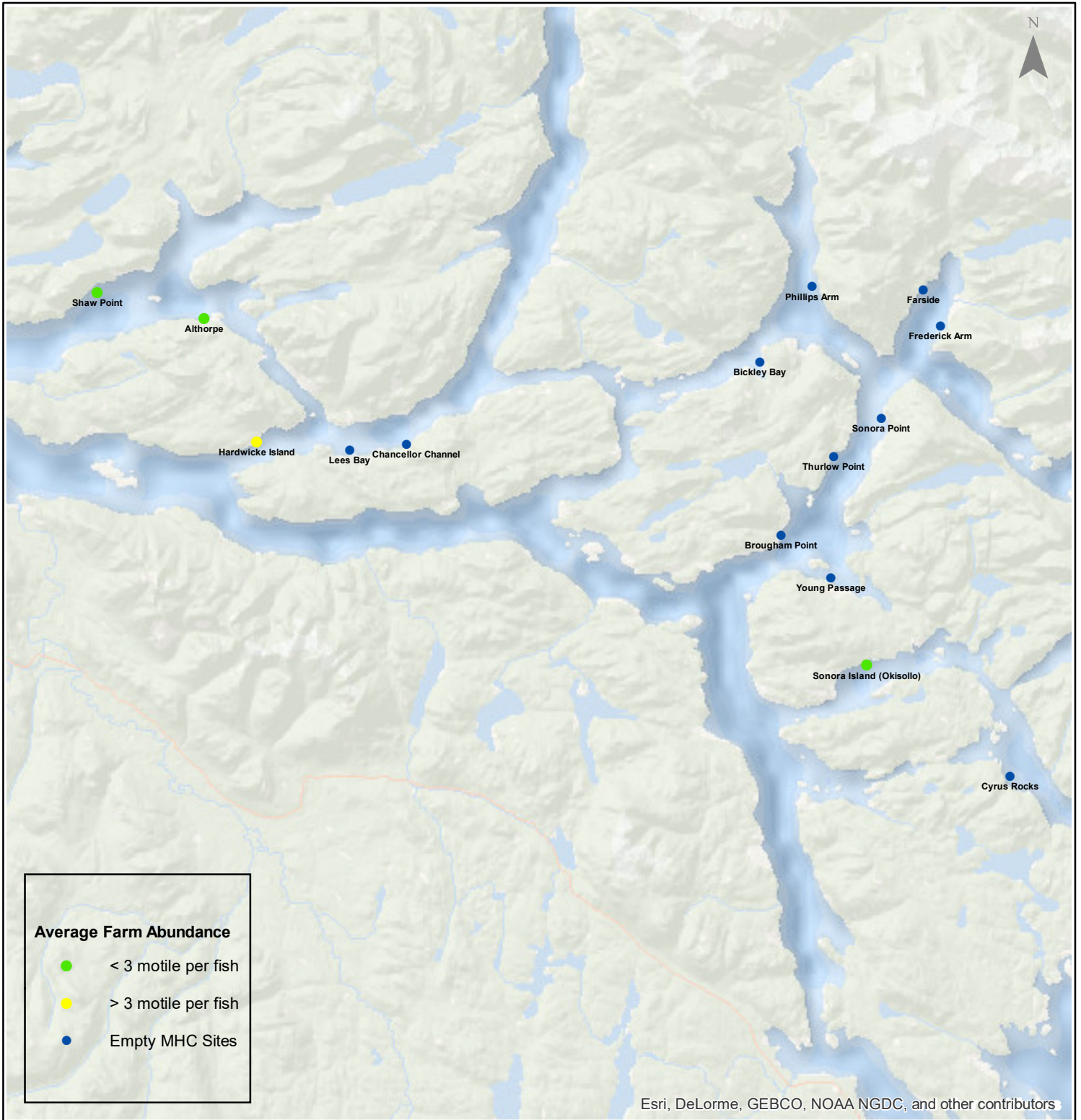
Date: 01/14/2018

# Sea Lice Monitoring - Average Farm Abundance

## *Campbell River - December 2017*



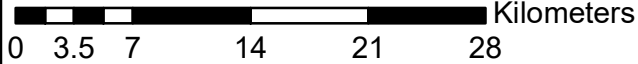
1:450,000



**Average Farm Abundance**

- < 3 motile per fish
- > 3 motile per fish
- Empty MHC Sites

Esri, DeLorme, GEBCO, NOAA NGDC, and other contributors



Coordinate System: WGS 1984 Web Mercator Auxiliary Sphere

Author: BC Centre for Aquatic Health Sciences Society

Date: 01/14/2018

Sea Lice Monitoring - Average Farm Abundance

SiteArea	Facility	Date Sampled	Motile L. salmonis	Memo	EMB* Rx Start Date	H2O2** Rx Start Date
Broughton	Arrow Passage	12 2017		Fallow		
Broughton	Doctor Islets	12 2017		no counts due to harvesting	11-Feb-17	
Broughton	Glacier Falls	12 2017	1.83			
Broughton	Humphrey Rocks	12 2017	0.88			
Broughton	Larsen Island	12 2017		Smolt entry starting Dec 12, 2017		
Broughton	Midsummer Island	12 2017	3.02	Treatment pending		
Broughton	Port Elizabeth	12 2017	0.07			
Broughton	Potts Bay	12 2017	2.69	SLICE	4-Dec-17	
Broughton	Sargeaunt Pass	12 2017	0.30			
Broughton	Swanson Island	12 2017		Fallow as of Dec 28, 2017	17-Jan-17	
Broughton	Upper Retreat	12 2017		Fallow		
Broughton	Wicklow Point	12 2017	0.40		28-Sep-17	
Campbell River	Althorpe	12 2017	0.40		30-Oct-17	
Campbell River	Bickley Bay	12 2017		Fallow		
Campbell River	Brougham Point	12 2017		Fallow		
Campbell River	Chancellor Channel	12 2017		Fallow		
Campbell River	Cyrus Rocks	12 2017		Fallow		
Campbell River	Dunsterville	12 2017		Fallow		
Campbell River	Egerton Creek	12 2017		Fallow		
Campbell River	Farside	12 2017		Fallow		
Campbell River	Frederick Arm	12 2017		Fallow		
Campbell River	Hardwicke Island	12 2017	12.38	Fallow as of Dec 28, 2017	21-Nov-16	
Campbell River	Lees Bay	12 2017		Fallow		
Campbell River	Phillips Arm	12 2017		Fallow		
Campbell River	Read Island	12 2017		Fallow		
Campbell River	Shaw Point	12 2017	0.3			
Campbell River	Sonora Island (Okisollo)	12 2017	1.49		19-Nov-17	11-Aug-17
Campbell River	Sonora Point	12 2017		Fallow		
Campbell River	Thurlow Point	12 2017		Fallow		
Campbell River	Young Passage	12 2017		Fallow		
Klemtu	Alexander Inlet	12 2017	1.55			31-Oct-17
Klemtu	Cougar Bay	12 2017		Fallow		12-Jul-17
Klemtu	Goat Cove	12 2017	1.11			20-Oct-17
Klemtu	Kid Bay	12 2017	0			
Klemtu	Lime Point	12 2017		Fallow		
Klemtu	Sheep Pass	12 2017		Fallow as of Dec 13, 2017	16-Jun-17	25-Jan-17
Port Hardy	Bell Island	12 2017	0.09			
Port Hardy	Doyle Island	12 2017		Fallow		
Port Hardy	Duncan Island	12 2017		Fallow		
Port Hardy	Ghi ya, Bull Harbour	12 2017	0.46		25-Oct-17	25-Jul-17
Port Hardy	Hardy Bay	12 2017		Fallow		
Port Hardy	Marsh Bay	12 2017		Fallow		
Port Hardy	Raynor	12 2017		Fallow		
Port Hardy	Robertson Island	12 2017		Fallow		
Port Hardy	Shelter Bay	12 2017	0.96			
Port Hardy	Shelter Pass	12 2017		Fallow		
Port Hardy	Wanx Talis, Heath Bay	12 2017	1.66	SLICE	19-Dec-17	20-Sep-17
Quatsino	Cleagh Creek	12 2017		Fallow		
Quatsino	Koskimo	12 2017	1.21		18-Nov-17	21-May-17
Quatsino	Mahatta East	12 2017	0.32		12-Nov-17	25-Apr-17
Quatsino	Mahatta West	12 2017		Fallow		
Quatsino	Monday Rocks	12 2017	0.58		18-Nov-17	7-May-17
Quatsino	Thorpe Point	12 2017		Fallow		

\*Emamectin Benzoate (Brand Name SLICE )

\*\* Hydrogen Peroxide (Brand Name Interlox Paramove 50 )

