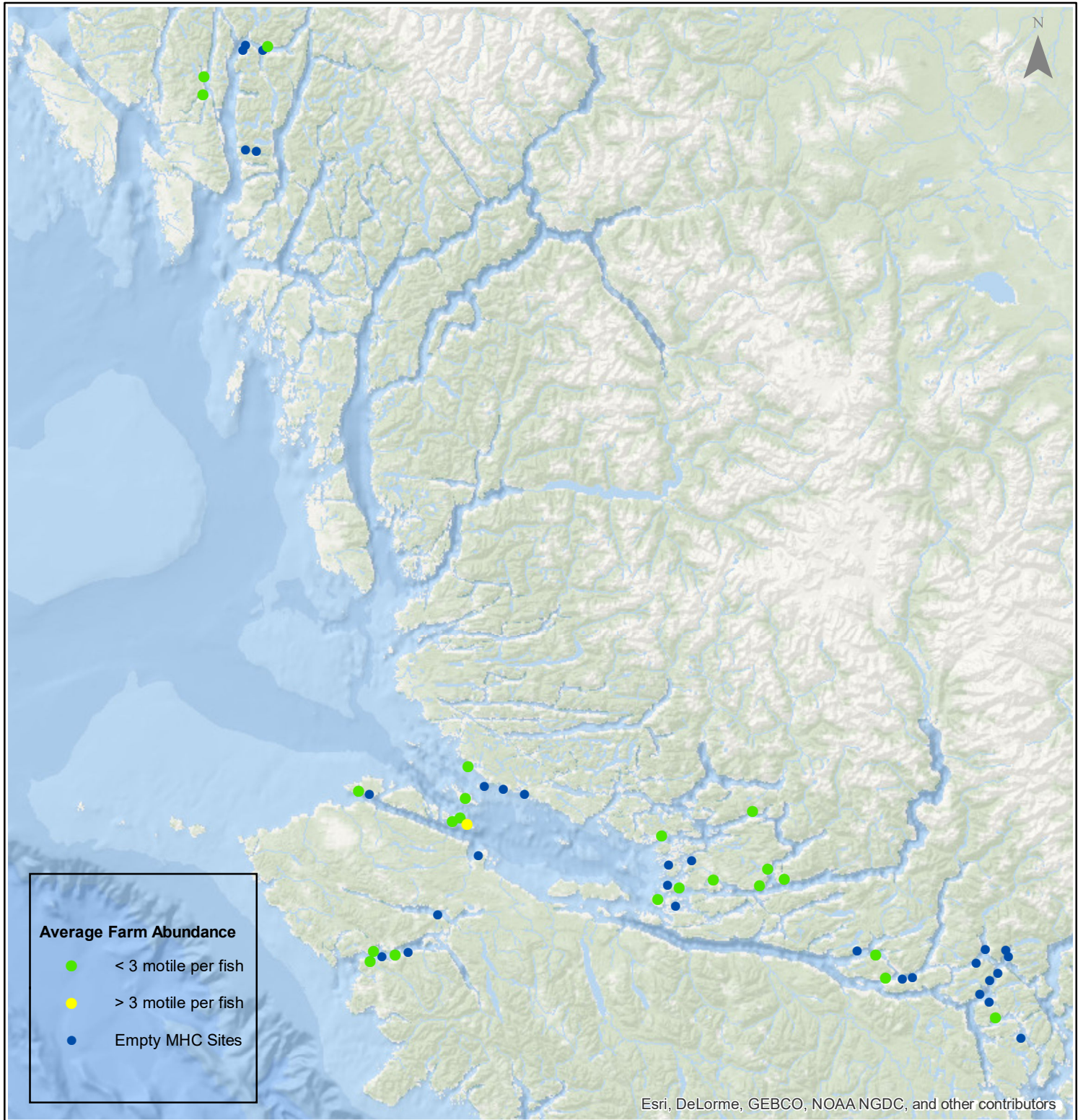


Sea Lice Monitoring - Average Farm Abundance

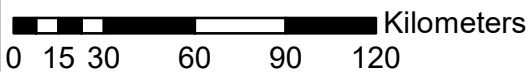
All Sites - August 2017



1:2,500,000



Esri, DeLorme, GEBCO, NOAA/NGDC, and other contributors



Coordinate System: WGS 1984 Web Mercator Auxiliary Sphere

Author: BC Centre for Aquatic Health Sciences Society

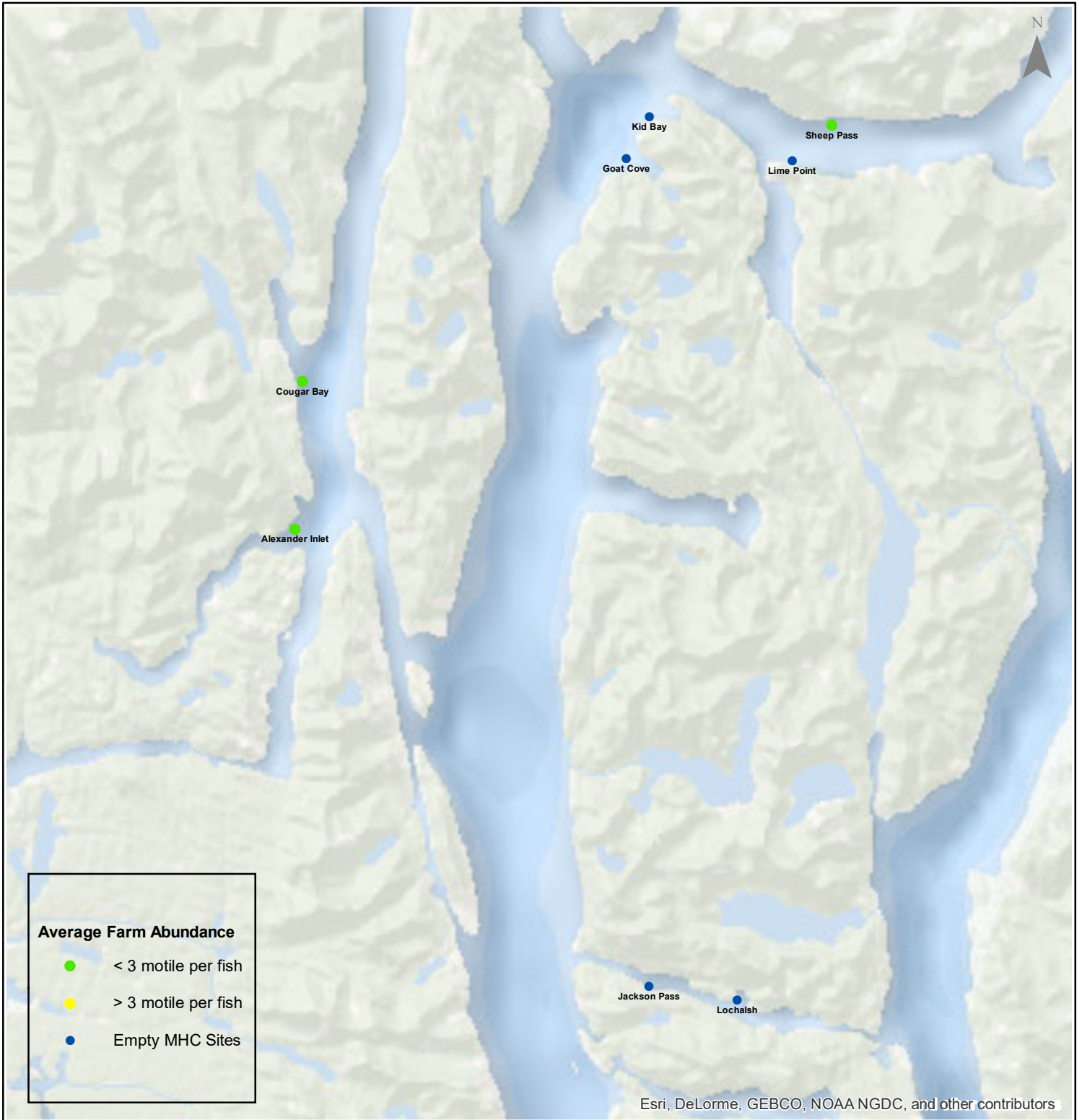
Date: 09/07/2017

Sea Lice Monitoring - Average Farm Abundance

Klemtu - August 2017



1:300,000



Esri, DeLorme, GEBCO, NOAA NGDC, and other contributors

0 2.25 4.5 9 13.5 18 Kilometers

Coordinate System: WGS 1984 Web Mercator Auxiliary Sphere

Author: BC Centre for Aquatic Health Sciences Society

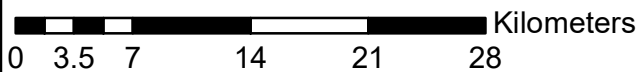
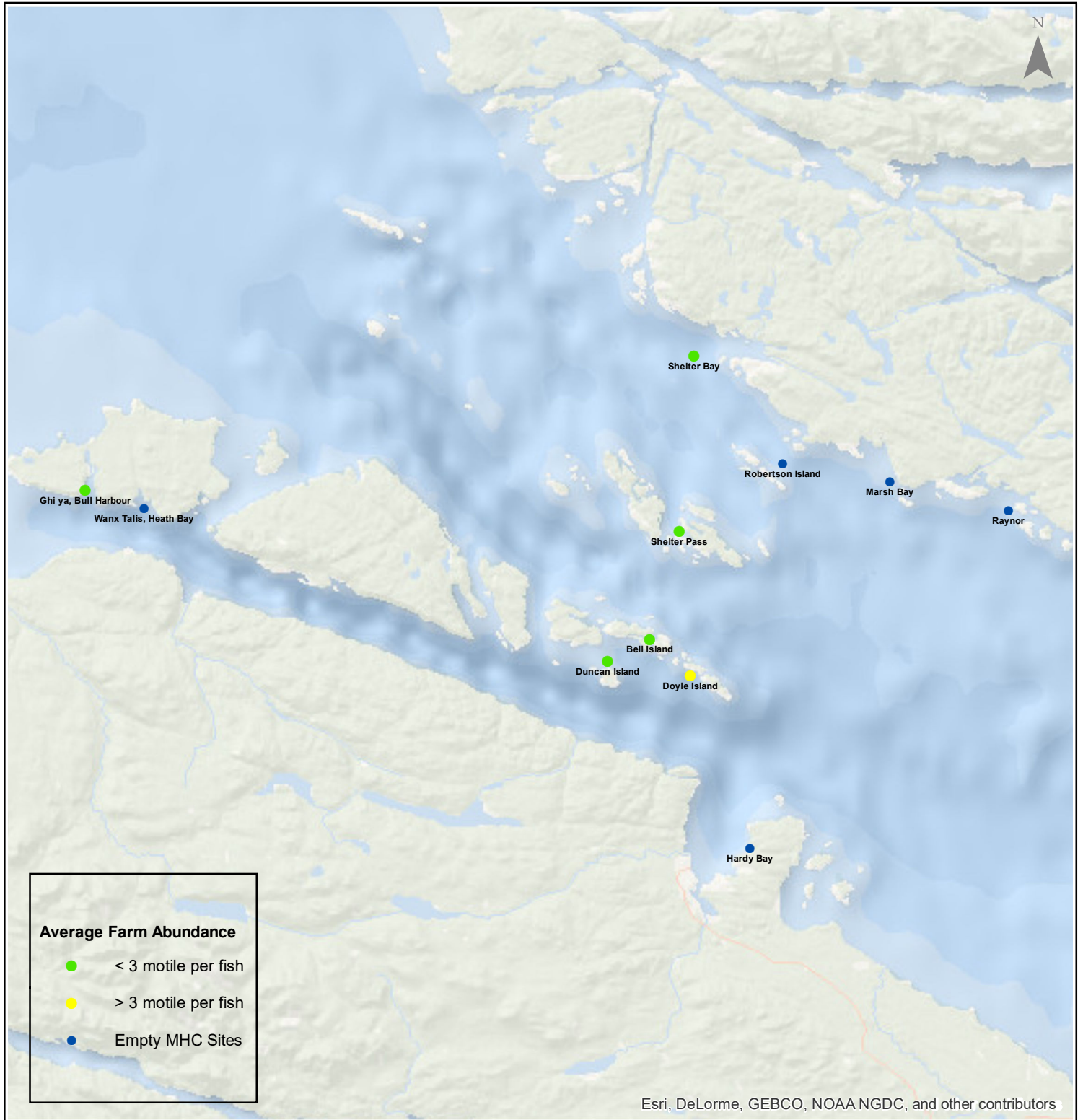
Date: 09/07/2017

Sea Lice Monitoring - Average Farm Abundance

Port Hardy - August 2017



1:450,000



Coordinate System: WGS 1984 Web Mercator Auxiliary Sphere

Author: BC Centre for Aquatic Health Sciences Society

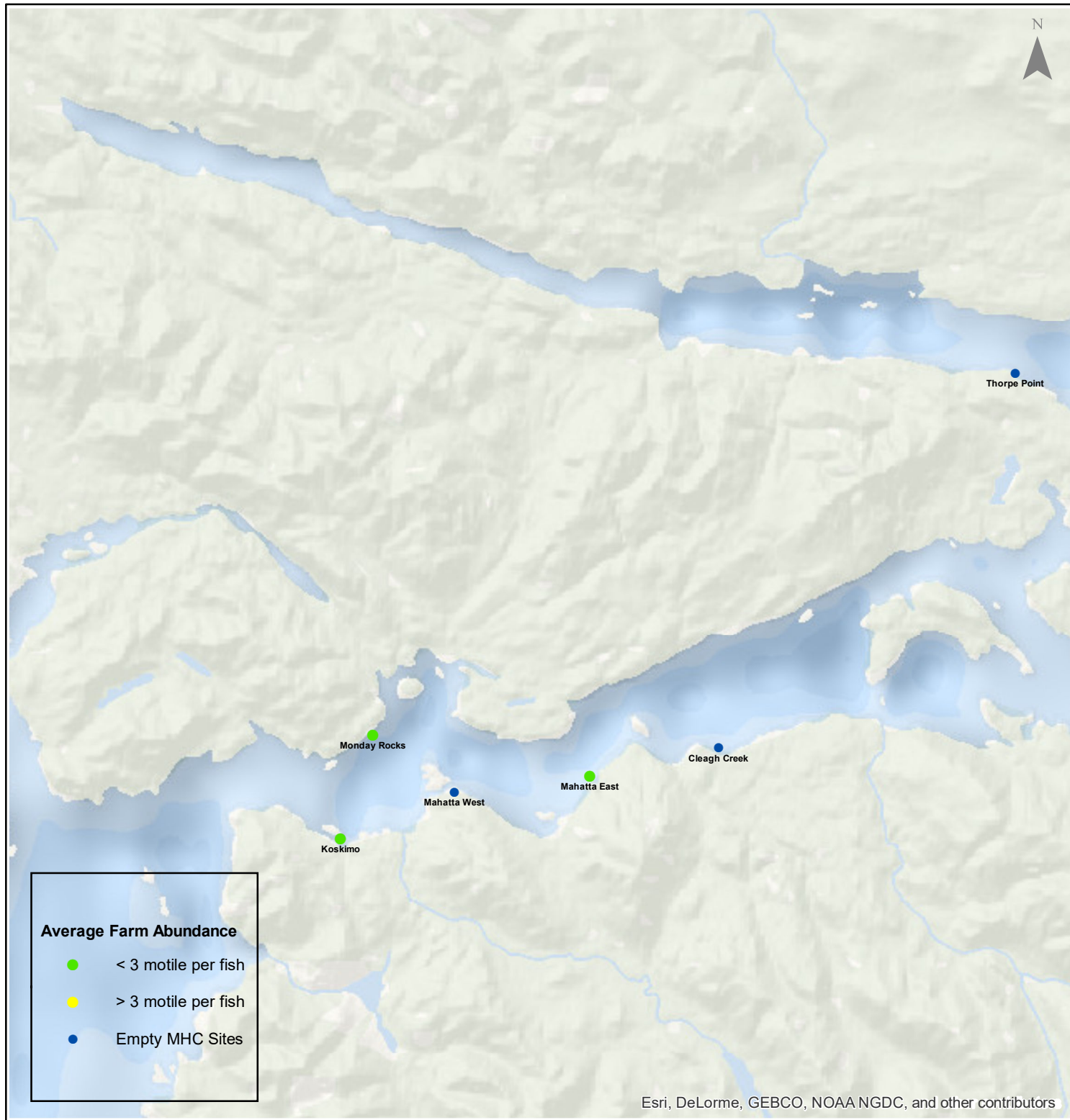
Date: 09/07/2017

Sea Lice Monitoring - Average Farm Abundance

Quatsino - August 2017



1:250,000



Average Farm Abundance

- < 3 motile per fish
- > 3 motile per fish
- Empty MHC Sites

Esri, DeLorme, GEBCO, NOAA NGDC, and other contributors

0 1.753.5 7 10.5 14 Kilometers

Coordinate System: WGS 1984 Web Mercator Auxiliary Sphere

Author: BC Centre for Aquatic Health Sciences Society

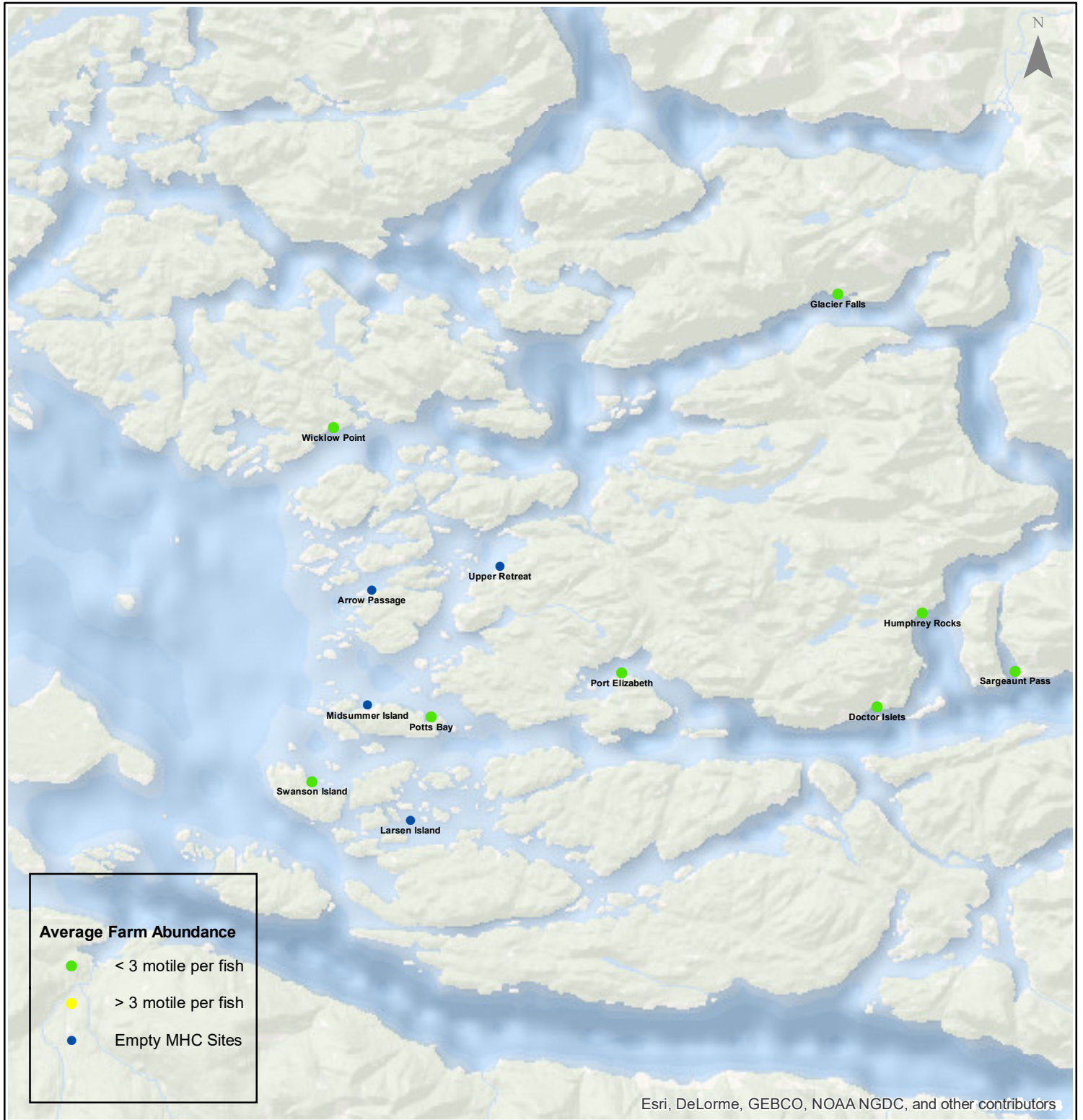
Date: 09/07/2017

Sea Lice Monitoring - Average Farm Abundance

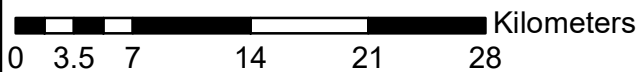
Broughton - August 2017



1:450,000



Esri, DeLorme, GEBCO, NOAA NGDC, and other contributors



Coordinate System: WGS 1984 Web Mercator Auxiliary Sphere

Author: BC Centre for Aquatic Health Sciences Society

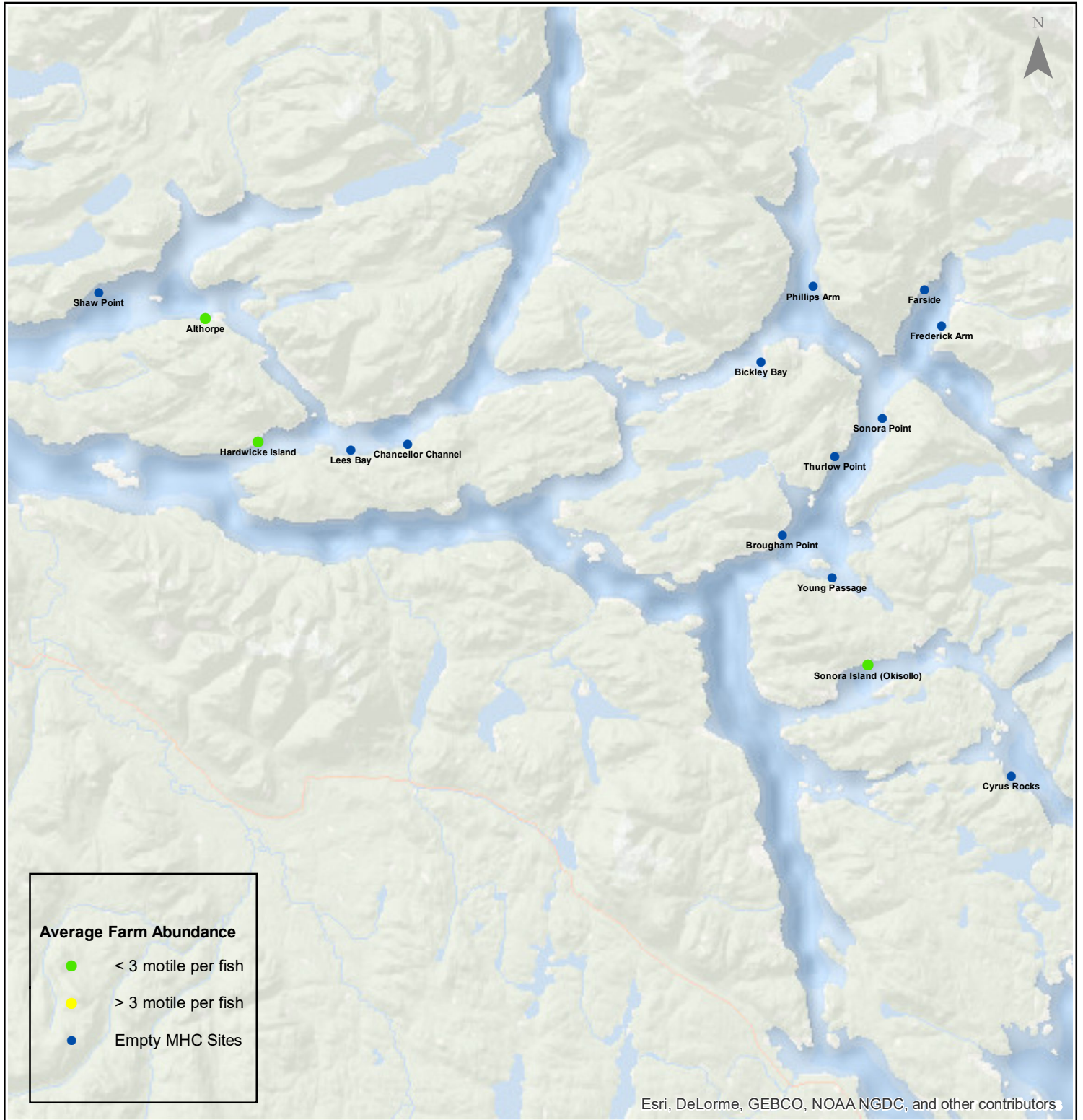
Date: 09/07/2017

Sea Lice Monitoring - Average Farm Abundance

Campbell River - August 2017



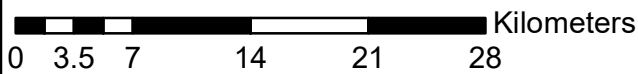
1:450,000



Average Farm Abundance

- < 3 motile per fish
- > 3 motile per fish
- Empty MHC Sites

Esri, DeLorme, GEBCO, NOAA NGDC, and other contributors



Coordinate System: WGS 1984 Web Mercator Auxiliary Sphere

Author: BC Centre for Aquatic Health Sciences Society

Date: 09/07/2017

Sea Lice Monitoring - Average Farm Abundance

SiteArea	Facility	Date Sampled	Motile L. salmonis	Memo	EMB* Rx Start Date	H2O2** Rx Start Date
Broughton	Arrow Passage	8 2017		Fallow		
Broughton	Doctor Islets	8 2017	0.14		11-Feb-17	
Broughton	Glacier Falls	8 2017	0.37			
Broughton	Humphrey Rocks	8 2017	0.16			
Broughton	Larsen Island	8 2017		Fallow		
Broughton	Midsummer Island	8 2017		Fallow		
Broughton	Port Elizabeth	8 2017	0.35	Fallow as of Aug 13, 2017		
Broughton	Potts Bay	8 2017	0.65		1-Feb-17	
Broughton	Sargeaunt Pass	8 2017	0.03			
Broughton	Swanson Island	8 2017	1.31		17-Jan-17	
Broughton	Upper Retreat	8 2017		Fallow		
Broughton	Wicklow Point	8 2017	2.21		3-Jan-17	
Campbell River	Althorpe	8 2017	1.81		19-Jan-17	
Campbell River	Bickley Bay	8 2017		Fallow		
Campbell River	Brougham Point	8 2017		Fallow		
Campbell River	Chancellor Channel	8 2017		Fallow		
Campbell River	Cyrus Rocks	8 2017		Fallow		
Campbell River	Dunsterville	8 2017		Fallow		
Campbell River	Egerton Creek	8 2017		Fallow		
Campbell River	Farside	8 2017		Fallow		
Campbell River	Frederick Arm	8 2017		Fallow		
Campbell River	Hardwicke Island	8 2017	2.01		21-Nov-16	
Campbell River	Lees Bay	8 2017		Fallow		
Campbell River	Phillips Arm	8 2017		Fallow		
Campbell River	Read Island	8 2017		Fallow		
Campbell River	Shaw Point	8 2017		Fallow		
Campbell River	Sonora Island (Okisollo)	8 2017	0.27	H2O2		11-Aug-17
Campbell River	Sonora Point	8 2017		Fallow as of Aug 16, 2017	24-Dec-16	5-Aug-16
Campbell River	Thurlow Point	8 2017		Fallow		
Campbell River	Young Passage	8 2017		Fallow		
Klemtu	Alexander Inlet	8 2017	2.79	H2O2 in planning		8-Jul-17
Klemtu	Cougar Bay	8 2017	2.80	H2O2 in planning		12-Jul-17
Klemtu	Goat Cove	8 2017		Fallow		
Klemtu	Jackson Pass	8 2017		Fallow		
Klemtu	Kid Bay	8 2017		Fallow		
Klemtu	Lime Point	8 2017		Fallow		
Klemtu	Lochalsh	8 2017		Fallow		
Klemtu	Sheep Pass	8 2017	0.72		16-Jun-17	25-Jan-17
Port Hardy	Bell Island	8 2017	0.92			
Port Hardy	Doyle Island	8 2017	4.08	To be harvested	2-Mar-17	20-Nov-16
Port Hardy	Duncan Island	8 2017	2.01	Harvesting	25-Feb-17	27-Sep-16
Port Hardy	Ghi ya, Bull Harbour	8 2017	0.41			25-Jul-17
Port Hardy	Hardy Bay	8 2017		Fallow		
Port Hardy	Marsh Bay	8 2017		Fallow		
Port Hardy	Raynor	8 2017		Fallow		
Port Hardy	Robertson Island	8 2017		Fallow		
Port Hardy	Shelter Bay	8 2017	2.13			
Port Hardy	Shelter Pass	8 2017	0.76		2-Mar-17	
Port Hardy	Wanx Talis, Heath Bay	8 2017		Fallow		
Quatsino	Cleagh Creek	8 2017		Fallow		
Quatsino	Koskimo	8 2017	0.83			21-May-17
Quatsino	Mahatta East	8 2017	0.96			25-Apr-17
Quatsino	Mahatta West	8 2017		Fallow		
Quatsino	Monday Rocks	8 2017	0.50			7-May-17
Quatsino	Thorpe Point	8 2017		Fallow		

*Emamectin Benzoate (Brand Name *SLICE*)

** Hydrogen Peroxide (Brand Name *Interox Paramove 50*)

