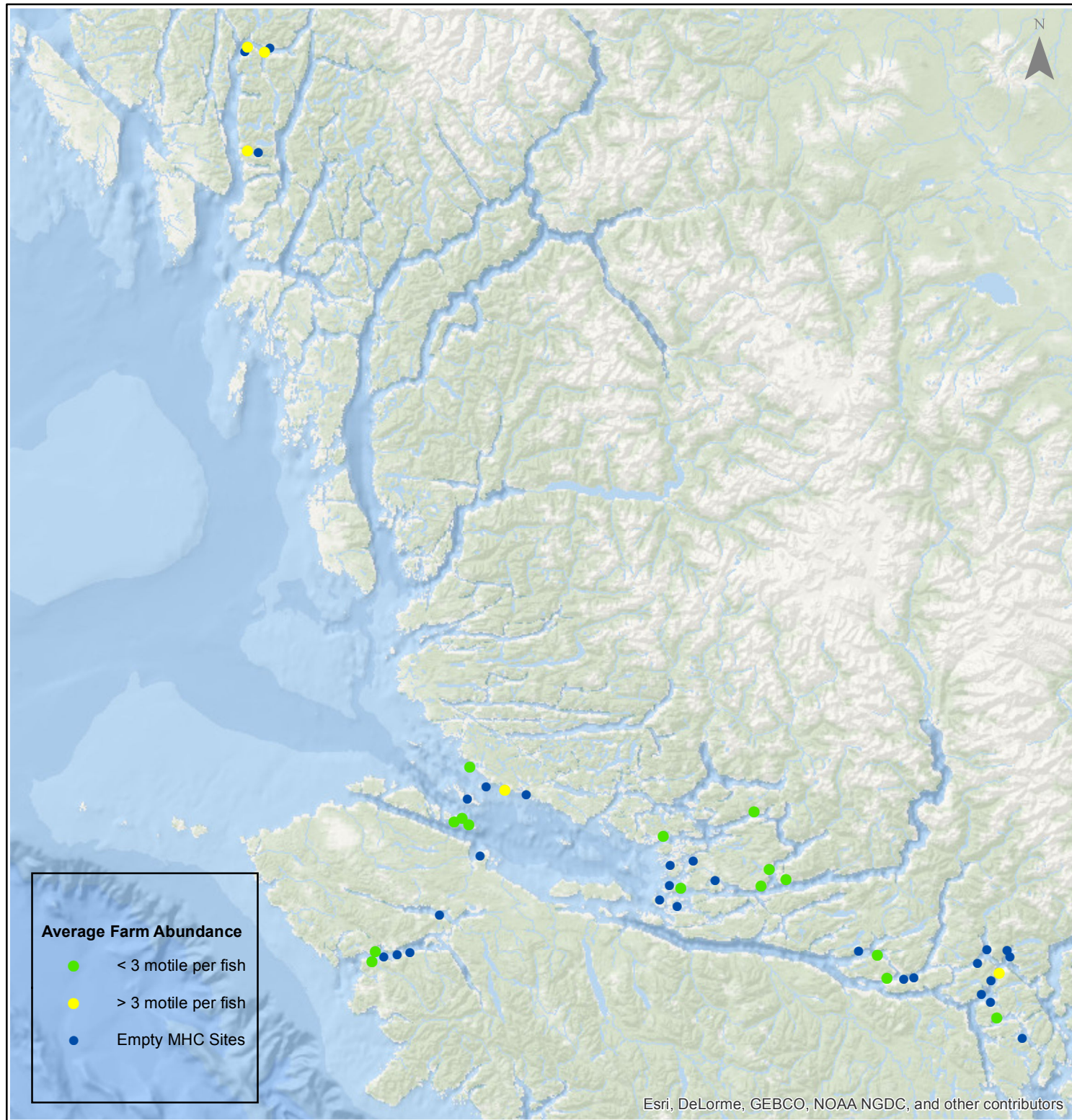


# Sea Lice Monitoring - Average Farm Abundance (AFA)

*All Sites - September 2015*



1:2,500,000



Esri, DeLorme, GEBCO, NOAA NGDC, and other contributors

Coordinate System: WGS 1984 Web Mercator Auxiliary Sphere

Author: BC Centre for Aquatic Health Sciences Society

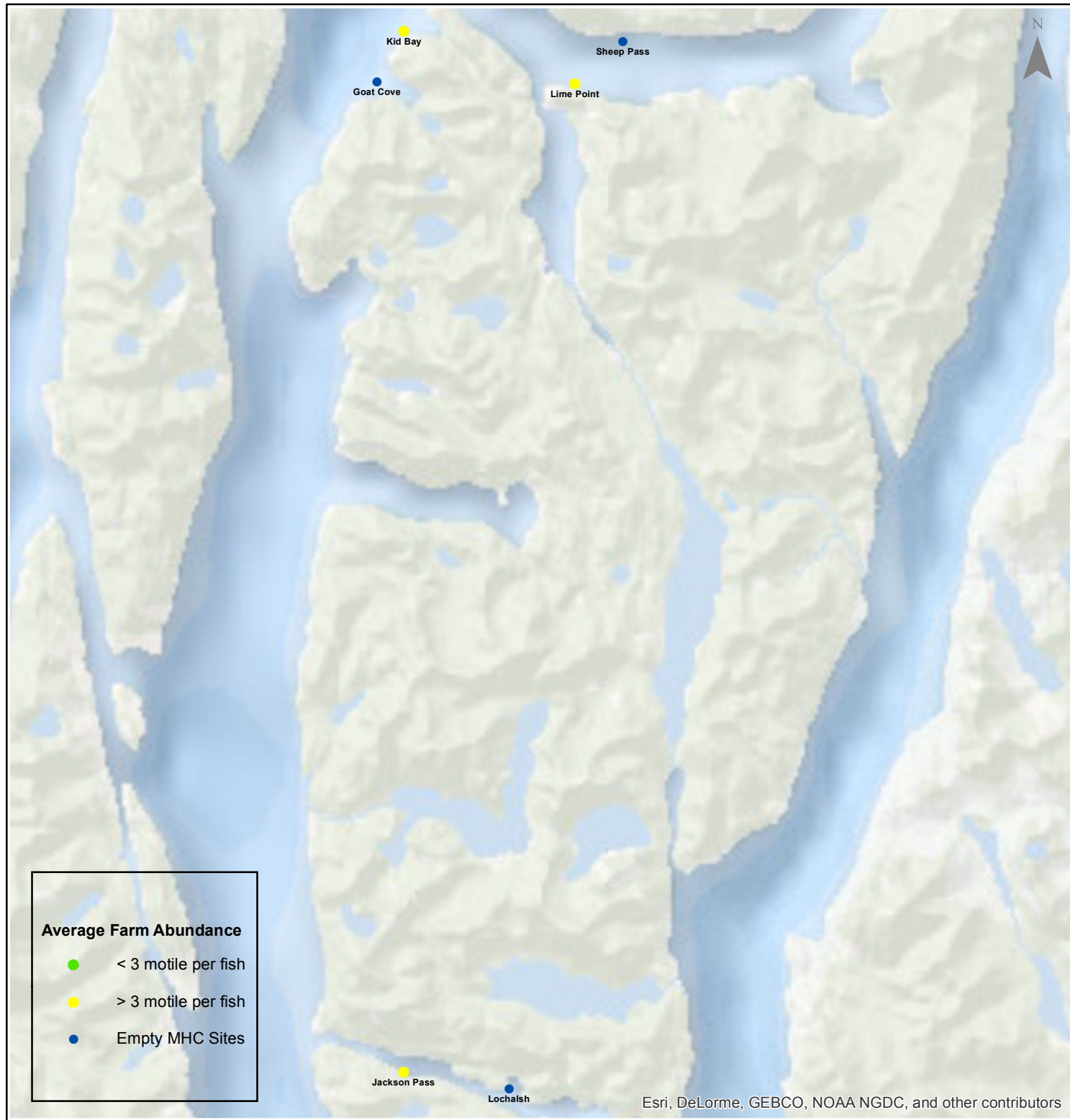
Date: 10/20/2015

# Sea Lice Monitoring - Average Farm Abundance (AFA)

## *Klemtu - September 2015*



1:250,000



0 1.753.5 7 10.5 14 Kilometers

Coordinate System: WGS 1984 Web Mercator Auxiliary Sphere

Author: BC Centre for Aquatic Health Sciences Society

Date: 10/20/2015

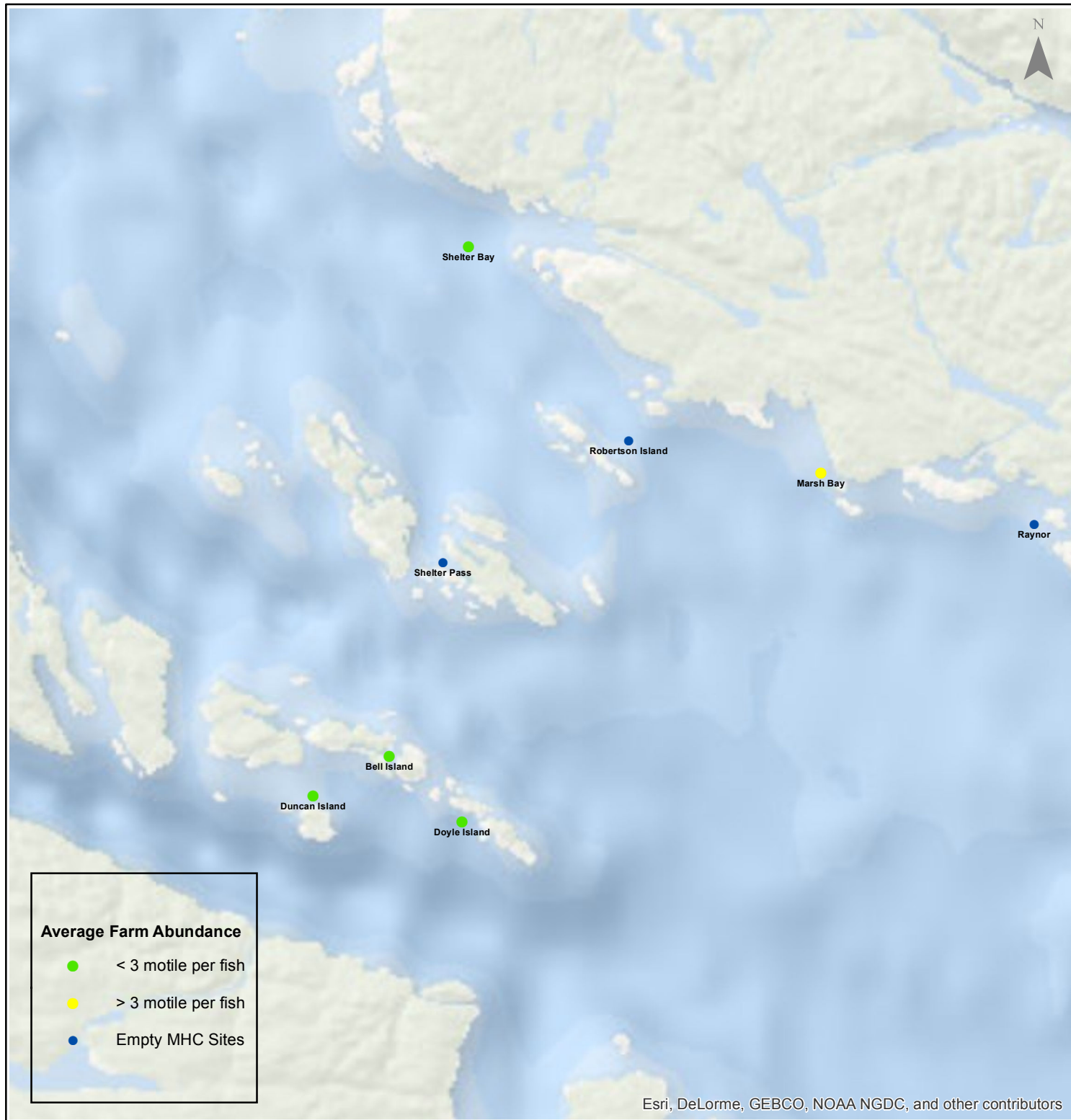


# Sea Lice Monitoring - Average Farm Abundance (AFA)

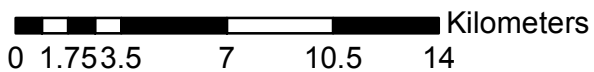
## Port Hardy - September 2015



1:250,000



Esri, DeLorme, GEBCO, NOAA NGDC, and other contributors



Coordinate System: WGS 1984 Web Mercator Auxiliary Sphere

Author: BC Centre for Aquatic Health Sciences Society

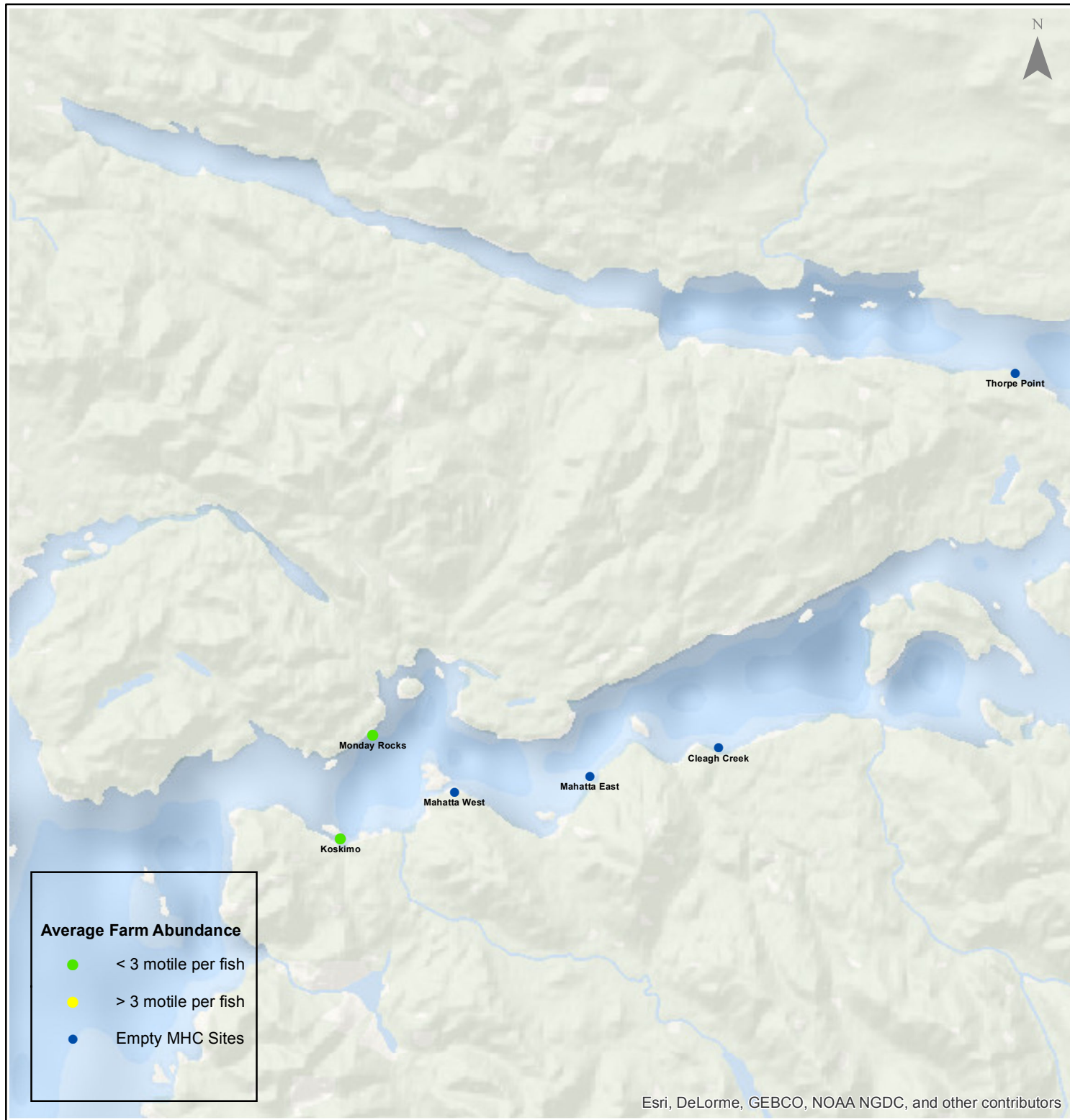
Date: 10/20/2015

# Sea Lice Monitoring - Average Farm Abundance (AFA)

## Quatsino - September 2015



1:250,000



Esri, DeLorme, GEBCO, NOAA NGDC, and other contributors

0 1.753.5 7 10.5 14 Kilometers

Coordinate System: WGS 1984 Web Mercator Auxiliary Sphere

Author: BC Centre for Aquatic Health Sciences Society

Date: 10/20/2015

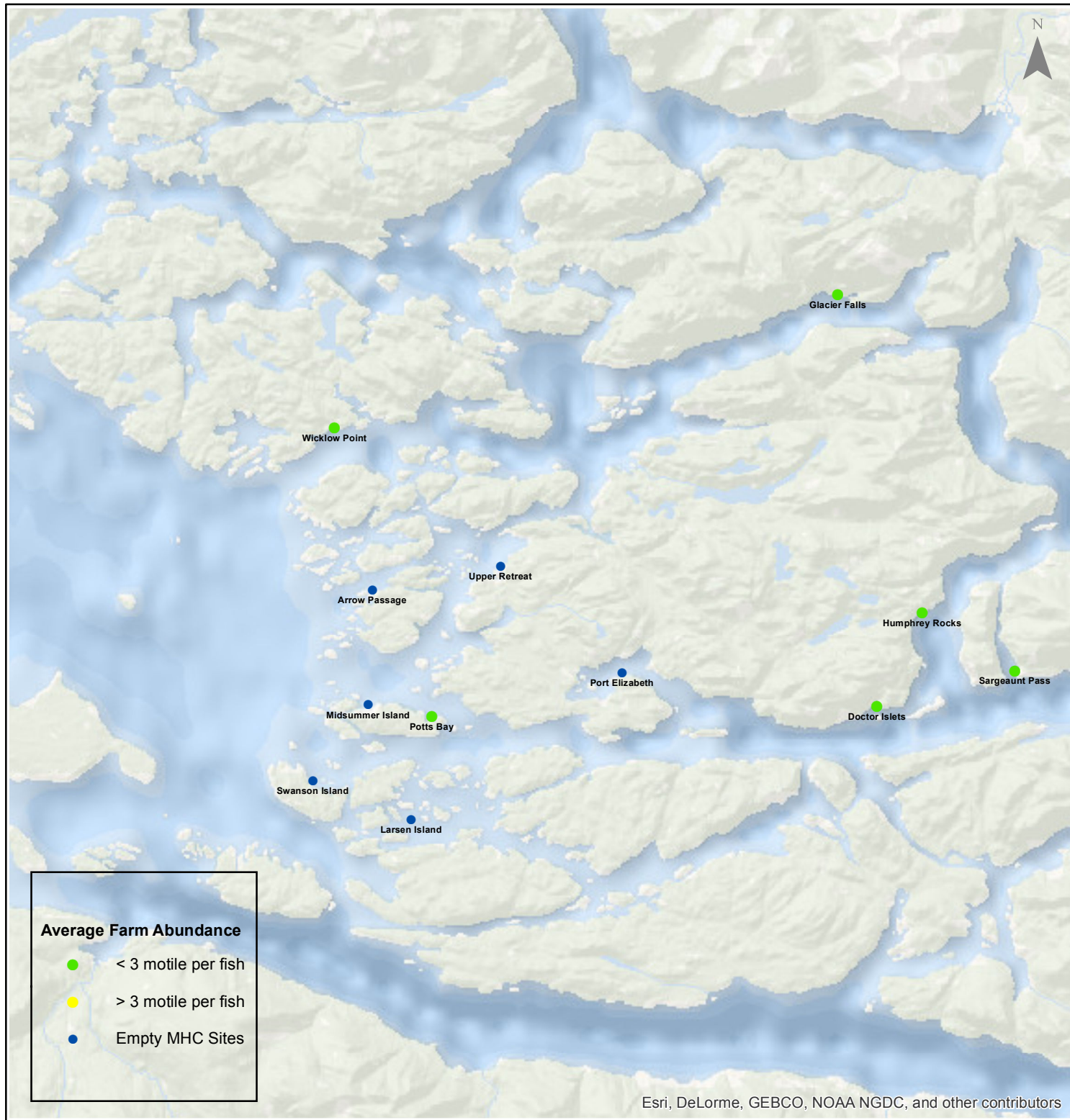


# Sea Lice Monitoring - Average Farm Abundance (AFA)

## *Broughton - September 2015*



1:450,000



Esri, DeLorme, GEBCO, NOAA NGDC, and other contributors

0 3.5 7 14 21 28 Kilometers

Coordinate System: WGS 1984 Web Mercator Auxiliary Sphere

Author: BC Centre for Aquatic Health Sciences Society

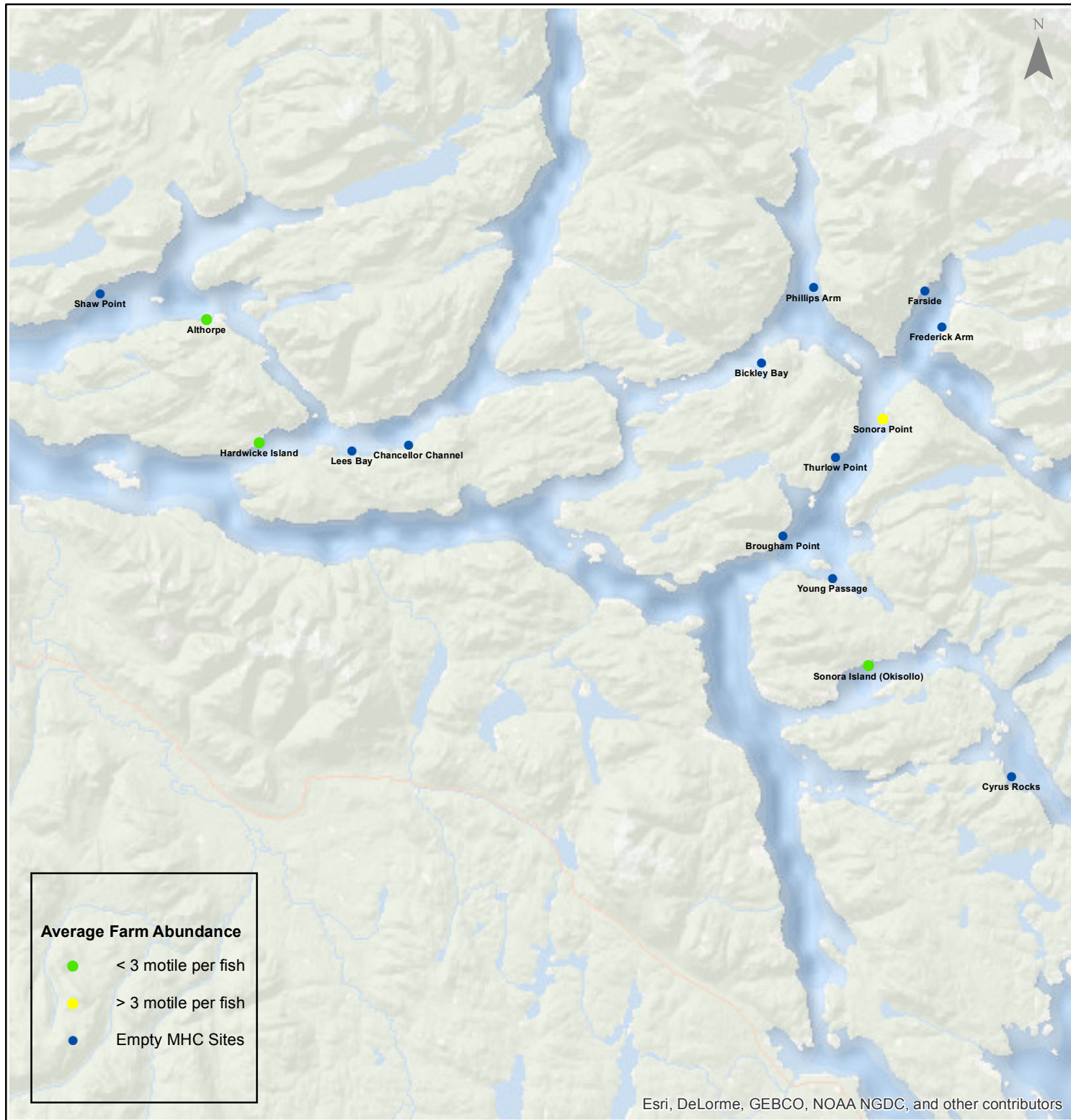
Date: 10/20/2015

# Sea Lice Monitoring - Average Farm Abundance (AFA)

## Campbell River - September 2015



1:450,000



Esri, DeLorme, GEBCO, NOAA NGDC, and other contributors

0 3.5 7 14 21 28 Kilometers

Coordinate System: WGS 1984 Web Mercator Auxiliary Sphere

Author: BC Centre for Aquatic Health Sciences Society

Date: 10/20/2015



Sea Lice Monitoring - Average Farm Abundance (AFA)

SiteArea	Facility	Date Sampled	Motile <i>L. salmonis</i> AFA	Memo	EMB* Rx Start Date	H2O2** Rx Start Date
Broughton	Arrow Passage	9 2015		Fallow		
Broughton	Doctor Islets	9 2015	0.20		15-Feb-15	
Broughton	Glacier Falls	9 2015	0.20		6-Jun-15	
Broughton	Humphrey Rocks	9 2015	0.25			
Broughton	Larsen Island	9 2015		Fallow		
Broughton	Midsummer Island	9 2015		Fallow		
Broughton	Port Elizabeth	9 2015		Fallow		
Broughton	Potts Bay	9 2015	2.23		13-Apr-15	
Broughton	Sargeant Pass	9 2015	0.02			
Broughton	Swanson Island	9 2015		low dissolved oxygen	15-Feb-15	
Broughton	Upper Retreat	9 2015		shipped fish to Okisollo, empty Sept 13, 2015		
Broughton	Wicklow Point	9 2015	0.38		29-Jun-15	
Campbell River	Althorpe	9 2015	1.50		13-Apr-15	
Campbell River	Bickley Bay	9 2015		Fallow		
Campbell River	Brougham Point	9 2015		Fallow		
Campbell River	Chancellor Channel	9 2015		Fallow		
Campbell River	Cyrus Rocks	9 2015		Fallow		
Campbell River	Dunsterville	9 2015		Fallow		
Campbell River	Egerton Creek	9 2015		Fallow		
Campbell River	Farside	9 2015		Fallow		
Campbell River	Frederick Arm	9 2015		Fallow		
Campbell River	Hardwicke Island	9 2015	0.45		12-Apr-15	
Campbell River	Lees Bay	9 2015		Fallow		
Campbell River	Phillips Arm	9 2015		Fallow		
Campbell River	Read Island	9 2015		Fallow		
Campbell River	Shaw Point	9 2015		Fallow		
Campbell River	Sonora Island (Okisollo)	9 2015	0.83			
Campbell River	Sonora Point	9 2015	3.70	Bi-weekly counts		
Campbell River	Thurlow Point	9 2015		Fallow		
Campbell River	Young Passage	9 2015		Fallow		
Freshwater	Glacial Creek	9 2015		broodstock in their spawning year		
Klemtu	Goat Cove	9 2015		Fallow		
Klemtu	Jackson Pass	9 2015	11.85	Treatment pending		
Klemtu	Kid Bay	9 2015	9.41	Hydrogen Peroxide treatment commenced	10-Jul-15	29-Sep-15
Klemtu	Lime Point	9 2015	16.75	Harvesting	3-May-15	15-Apr-15
Klemtu	Lochalsh	9 2015		Fallow		
Klemtu	Sheep Pass	9 2015		Fallow		
Kyuquot	Hohoae	9 2015		Fallow		
Port Hardy	Bell Island	9 2015	1.67		27-Oct-14	
Port Hardy	Doyle Island	9 2015	0.19		17-Jul-15	
Port Hardy	Duncan Island	9 2015	0.05		19-Jul-15	
Port Hardy	Hardy Bay	9 2015		Fallow		
Port Hardy	Marsh Bay	9 2015	12.65	Bi-weekly counts		
Port Hardy	Raynor	9 2015		Fallow		
Port Hardy	Robertson Island	9 2015		Fallow		
Port Hardy	Shelter Bay	9 2015	2.36	Bi-weekly counts		
Port Hardy	Shelter Pass	9 2015		Fallow		
Quatsino	Cleagh Creek	9 2015		Fallow		
Quatsino	Koskimo	9 2015	1.12		20-Apr-15	8-Jul-15
Quatsino	Mahatta East	9 2015		Fallow		
Quatsino	Mahatta West	9 2015		Fallow		
Quatsino	Monday Rocks	9 2015	0.62		20-Apr-15	12-Jul-15
Quatsino	Thorpe Point	9 2015		Fallow		

\*Emamectin Benzoate (Brand Name *SLICE*)

\*\* Hydrogen Peroxide (Brand Name *Interox Paramove 50*)

