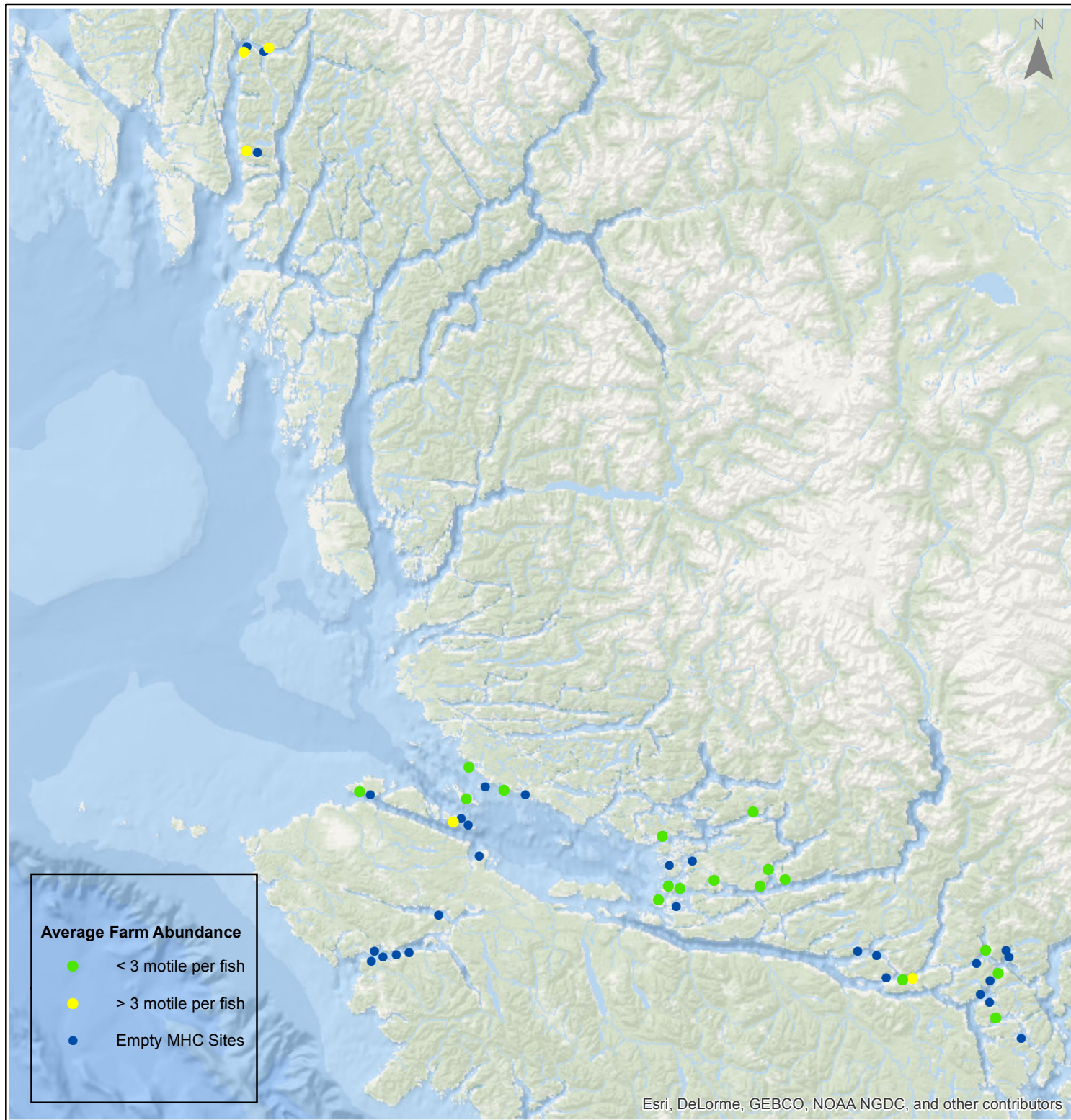


Sea Lice Monitoring - Average Farm Abundance (AFA)

All Sites - September 2016



1:2,500,000



Esri, DeLorme, GEBCO, NOAA NGDC, and other contributors

0 15 30 60 90 120 Kilometers

Coordinate System: WGS 1984 Web Mercator Auxiliary Sphere

Author: BC Centre for Aquatic Health Sciences Society

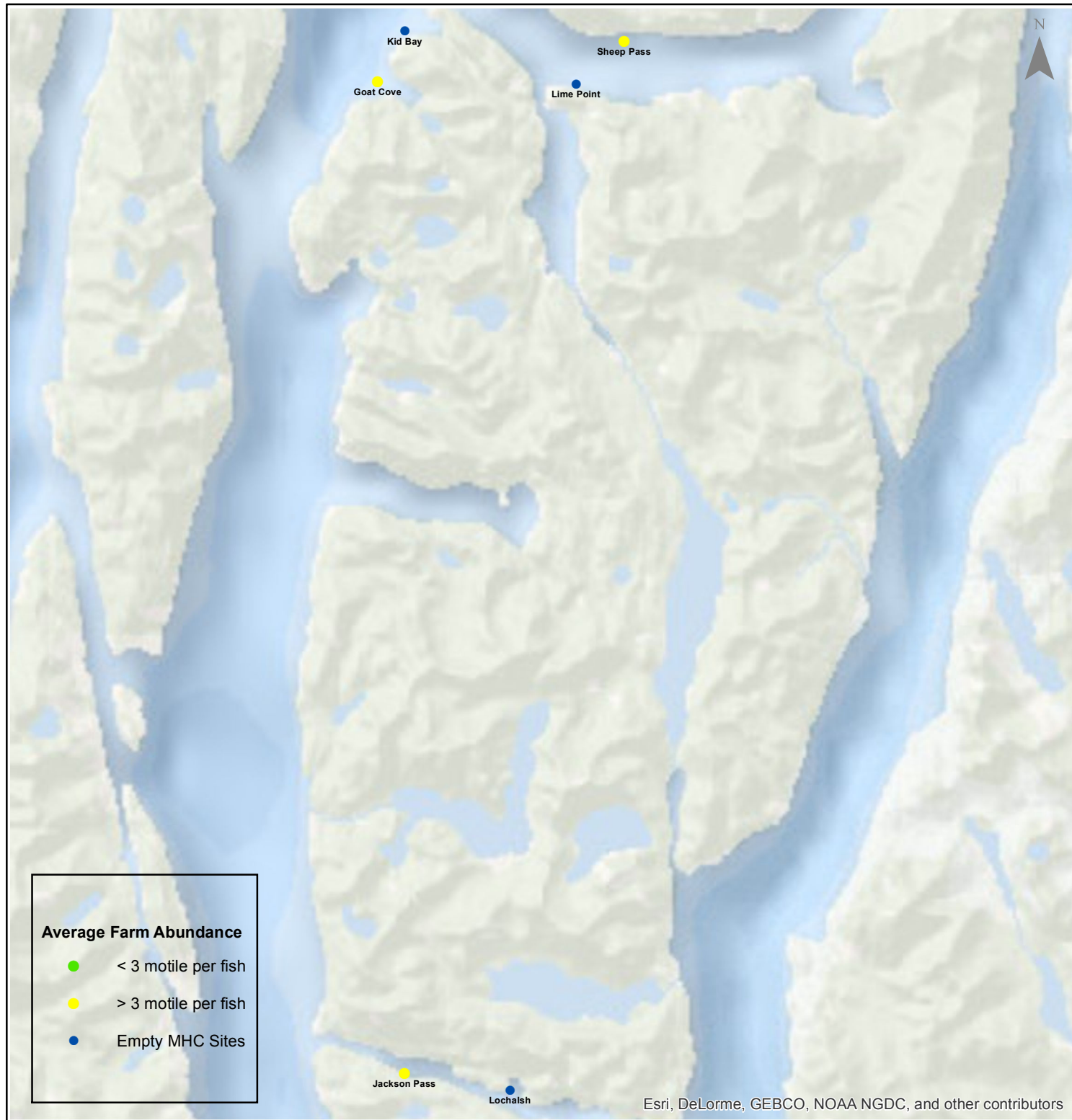
Date: 10/14/2016

Sea Lice Monitoring - Average Farm Abundance (AFA)

Klemtu - September 2016



1:250,000



0 1.753.5 7 10.5 14 Kilometers

Coordinate System: WGS 1984 Web Mercator Auxiliary Sphere

Author: BC Centre for Aquatic Health Sciences Society

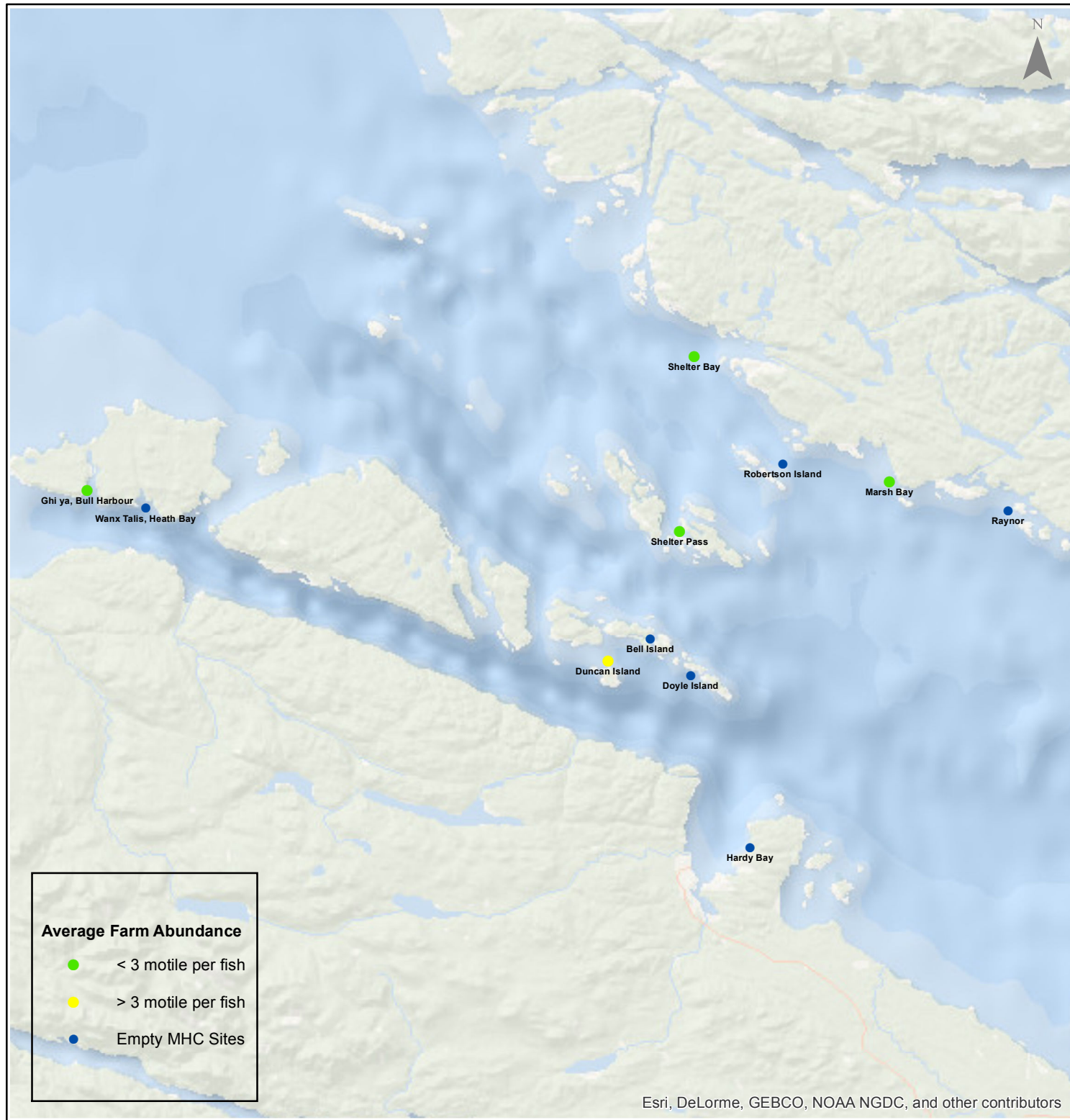
Date: 10/14/2016

Sea Lice Monitoring - Average Farm Abundance (AFA)

Port Hardy - September 2016



1:450,000



0 3.5 7 14 21 28 Kilometers

Coordinate System: WGS 1984 Web Mercator Auxiliary Sphere

Author: BC Centre for Aquatic Health Sciences Society

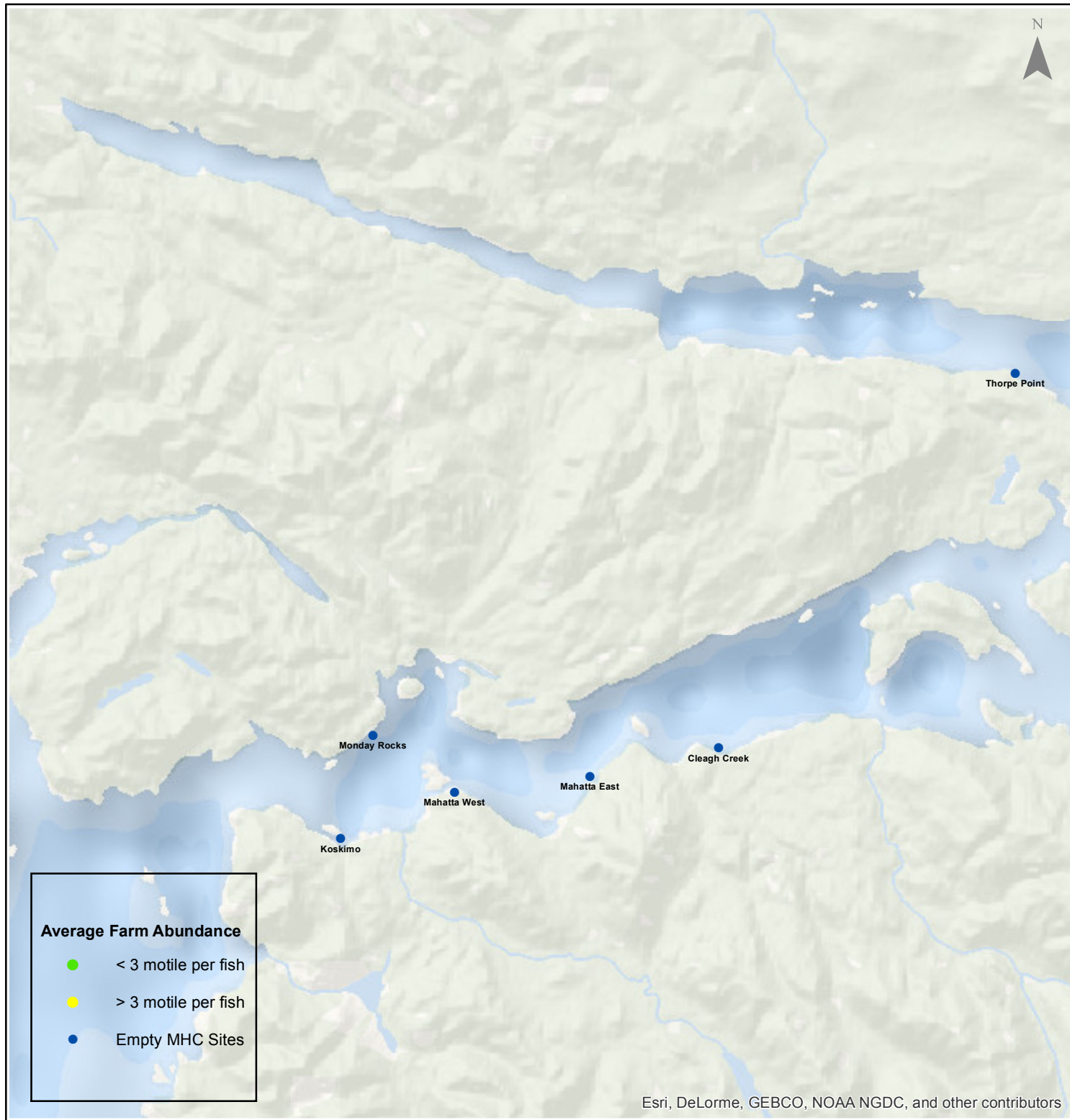
Date: 10/14/2016

Sea Lice Monitoring - Average Farm Abundance (AFA)

Quatsino - September 2016



1:250,000



Esri, DeLorme, GEBCO, NOAA NGDC, and other contributors

0 1.753.5 7 10.5 14 Kilometers

Coordinate System: WGS 1984 Web Mercator Auxiliary Sphere

Author: BC Centre for Aquatic Health Sciences Society

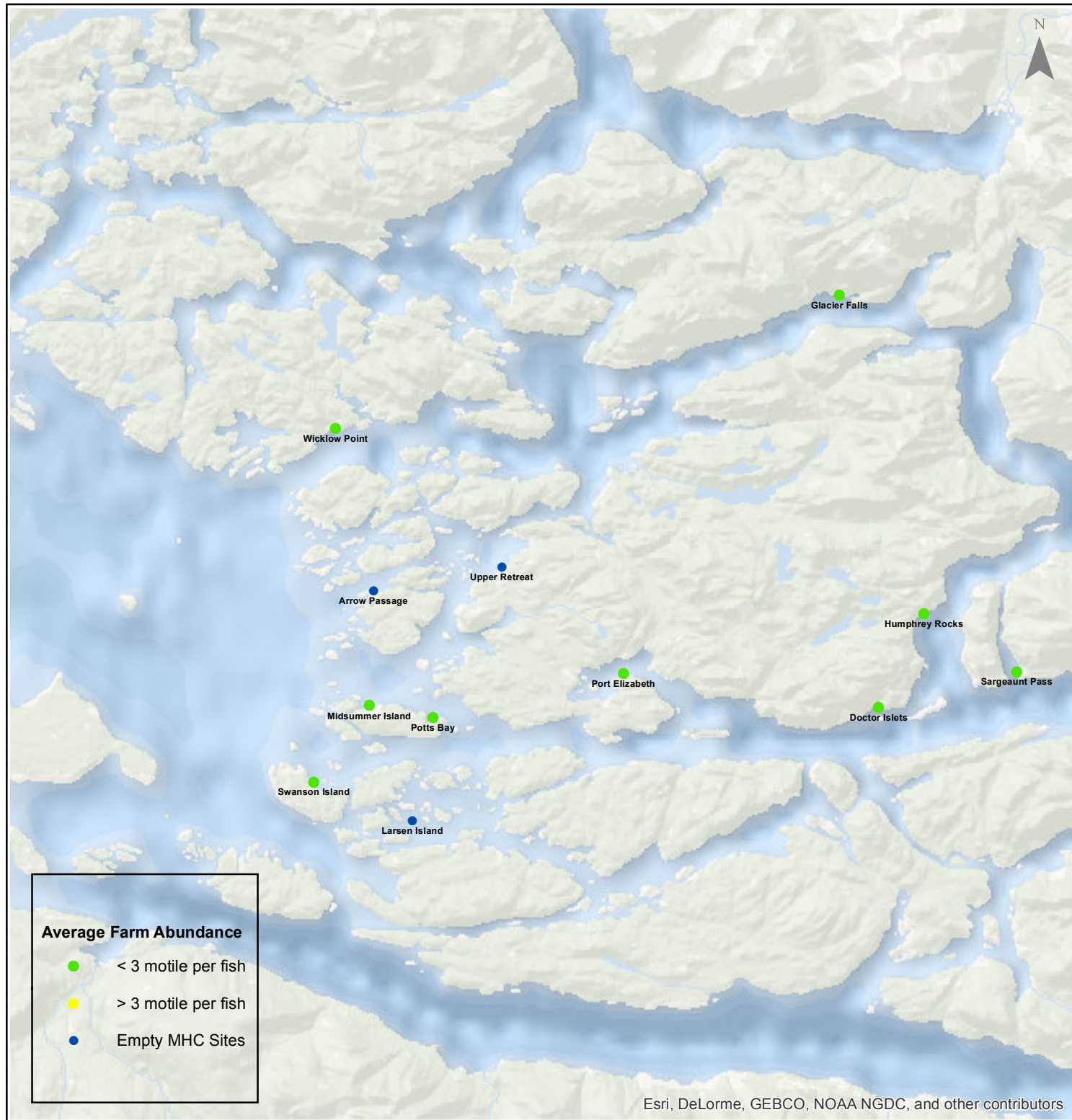
Date: 10/14/2016

Sea Lice Monitoring - Average Farm Abundance (AFA)

Broughton - September 2016



1:450,000



Esri, DeLorme, GEBCO, NOAA NGDC, and other contributors

0 3.5 7 14 21 28 Kilometers

Coordinate System: WGS 1984 Web Mercator Auxiliary Sphere

Author: BC Centre for Aquatic Health Sciences Society

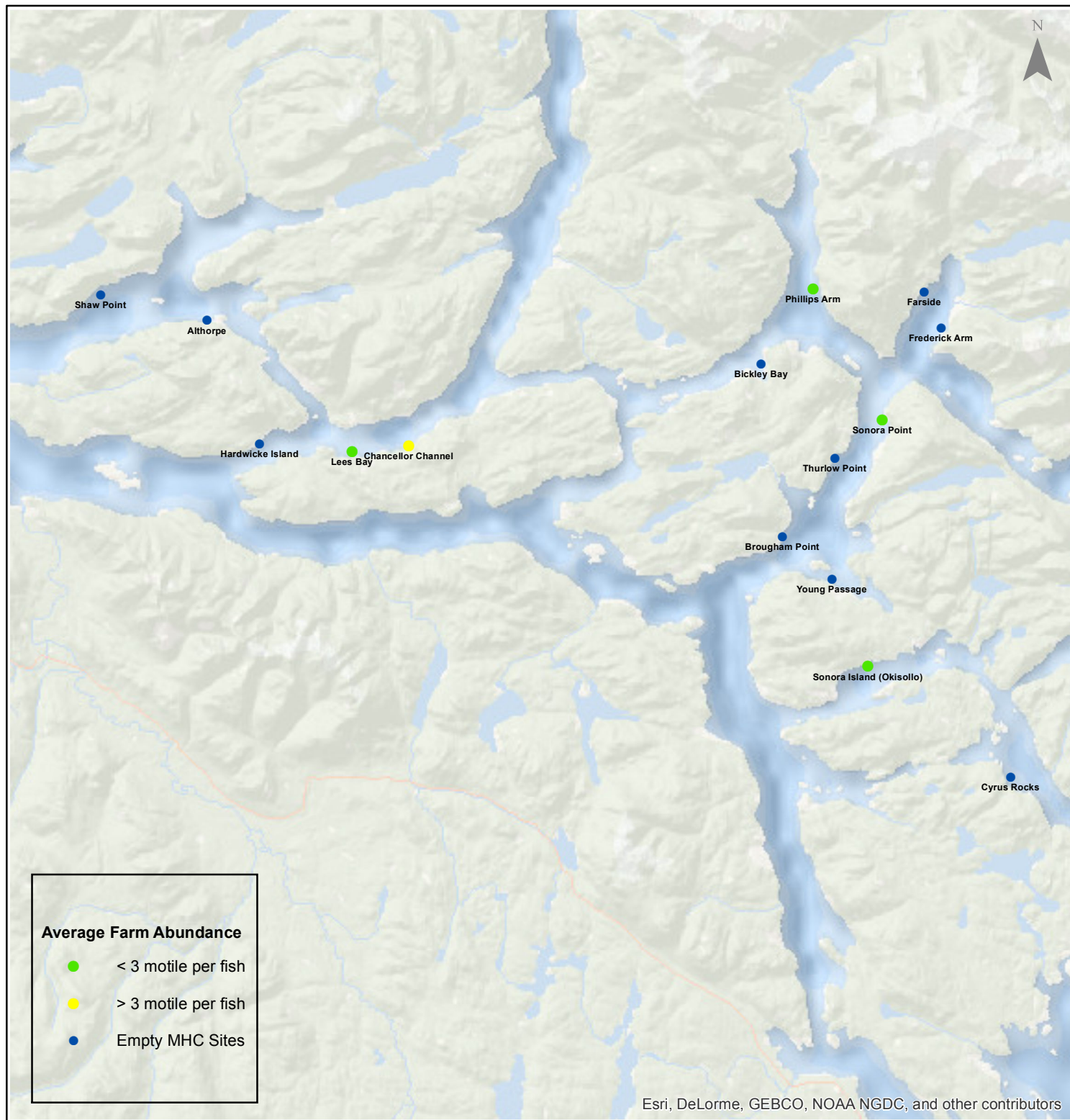
Date: 10/14/2016

Sea Lice Monitoring - Average Farm Abundance (AFA)

Campbell River - September 2016



1:450,000



Esri, DeLorme, GEBCO, NOAA NGDC, and other contributors

0 3.5 7 14 21 28 Kilometers

Coordinate System: WGS 1984 Web Mercator Auxiliary Sphere

Author: BC Centre for Aquatic Health Sciences Society

Date: 10/14/2016

Sea Lice Monitoring - Average Farm Abundance (AFA)

SiteArea	Facility	Date Sampled	Motile L. salmonis AFA	Memo	EMB* Rx Start Date	H2O2** Rx Start Date
Broughton	Arrow Passage	9 2016		Fallow		
Broughton	Doctor Islets	9 2016	0.49		22-May-16	
Broughton	Glacier Falls	9 2016	1.74		18-Feb-16	
Broughton	Humphrey Rocks	8 2016	0.13	Fallow as of Sept 14, 2016	29-Feb-16	
Broughton	Larsen Island	9 2016		Fallow		
Broughton	Midsummer Island	9 2016	2.16		14-Feb-16	
Broughton	Port Elizabeth	8 2016	0.33	Finished moving fish to Sonora Pt, Fallow as of Sept 20, 2016	20-Feb-16	
Broughton	Potts Bay	9 2016	2.30	FW bath on Sept 20, 2016	23-Jan-16	
Broughton	Sargeaunt Pass	8 2016	0.02	expected to be empty in early October	28-Feb-16	
Broughton	Swanson Island	9 2016	0.62			
Broughton	Upper Retreat	9 2016		Fallow		
Broughton	Wicklow Point	9 2016	2.73			
Campbell River	Althorpe	9 2016		Fallow		
Campbell River	Bickley Bay	9 2016		Fallow		
Campbell River	Brougham Point	9 2016		Fallow		
Campbell River	Chancellor Channel	9 2016	3.83			
Campbell River	Cyrus Rocks	9 2016		Fallow		
Campbell River	Dunsterville	9 2016		Fallow		
Campbell River	Egerton Creek	9 2016		Fallow		
Campbell River	Farside	9 2016		Fallow		
Campbell River	Frederick Arm	9 2016		Fallow		
Campbell River	Hardwicke Island	9 2016		started receiving fish from Swanson on Sept 27, 2016		
Campbell River	Lees Bay	9 2016	2.33			10-May-16
Campbell River	Phillips Arm	9 2016	0.58			
Campbell River	Read Island	9 2016		Fallow		
Campbell River	Shaw Point	9 2016		Fallow		
Campbell River	Sonora Island (Okisollo)	9 2016	0.40		24-Apr-16	
Campbell River	Sonora Point	9 2016	0.16			5-Aug-16
Campbell River	Thurlow Point	9 2016		Fallow		
Campbell River	Young Passage	9 2016		Fallow		
Klemtu	Goat Cove	9 2016	5.82	expected to be empty by end of October	19-May-16	25-Feb-16
Klemtu	Jackson Pass	9 2016	5.84			13-Jun-16
Klemtu	Kid Bay	9 2016		Fallow	1-Nov-15	28-Feb-16
Klemtu	Lime Point	9 2016		Fallow		
Klemtu	Lochalsh	9 2016		Fallow		
Klemtu	Sheep Pass	9 2016	3.42		22-Jun-16	25-Apr-16
Port Hardy	Bell Island	9 2016		Fallow		
Port Hardy	Doyle Island	9 2016		Fallow		
Port Hardy	Duncan Island	9 2016	3.28			27-Sep-16
Port Hardy	Ghi ya, Bull Harbour	9 2016	0.24		16-Jul-16	21-Mar-16
Port Hardy	Hardy Bay	9 2016		Fallow		
Port Hardy	Marsh Bay	9 2016	0.79		27-Apr-16	
Port Hardy	Raynor	9 2016		Fallow		
Port Hardy	Robertson Island	9 2016		Fallow		
Port Hardy	Shelter Bay	9 2016	0.76		1-Mar-16	
Port Hardy	Shelter Pass	9 2016	0.95			
Port Hardy	Wanx Talis, Heath Bay	9 2016		Fallow		
Quatsino	Cleagh Creek	9 2016		Fallow		
Quatsino	Koskimo	9 2016		Fallow		
Quatsino	Mahatta East	9 2016		Fallow		
Quatsino	Mahatta West	9 2016		Fallow		
Quatsino	Monday Rocks	9 2016		Fallow		
Quatsino	Thorpe Point	9 2016		Fallow		

*Eramectin Benzoate (Brand Name SLICE)

