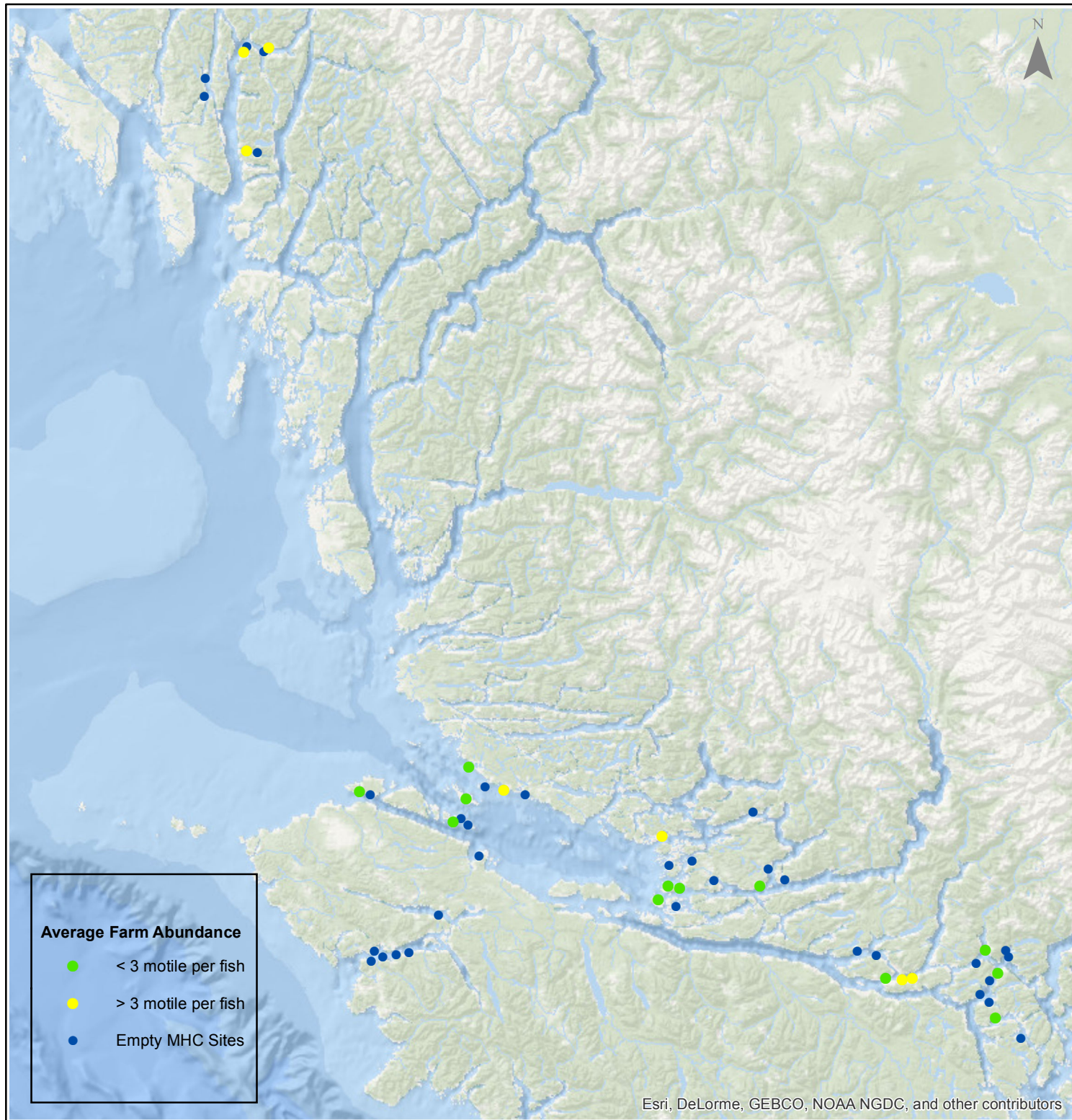


# Sea Lice Monitoring - Average Farm Abundance (AFA)

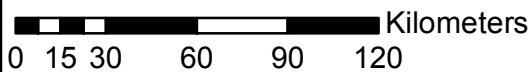
*All Sites - October 2016*



1:2,500,000



Esri, DeLorme, GEBCO, NOAA NGDC, and other contributors



Coordinate System: WGS 1984 Web Mercator Auxiliary Sphere

Author: BC Centre for Aquatic Health Sciences Society

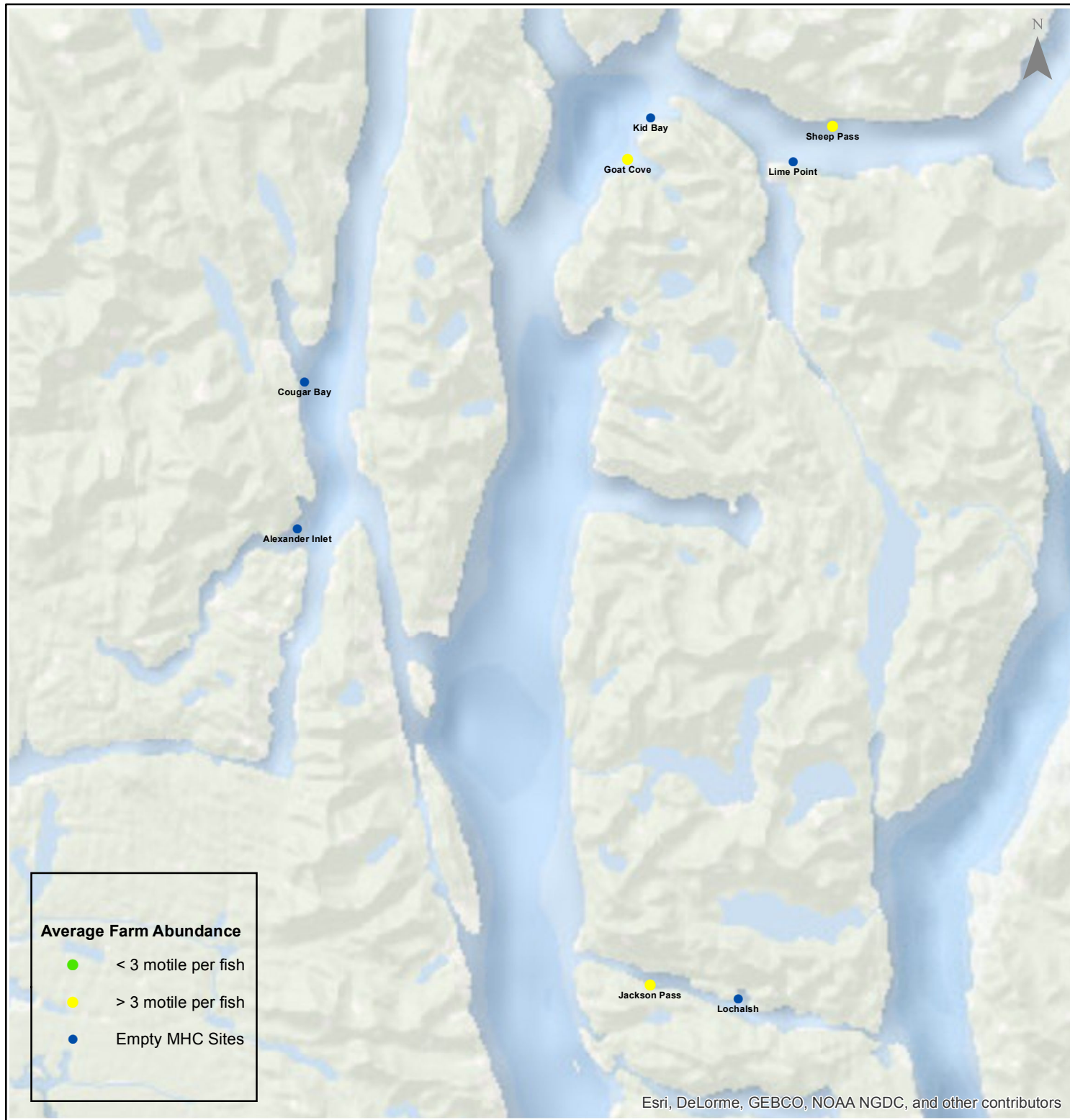
Date: 11/14/2016

# Sea Lice Monitoring - Average Farm Abundance (AFA)

## *Klemtu - October 2016*



1:300,000



0 2.25 4.5 9 13.5 18 Kilometers

Coordinate System: WGS 1984 Web Mercator Auxiliary Sphere

Author: BC Centre for Aquatic Health Sciences Society

Date: 11/14/2016

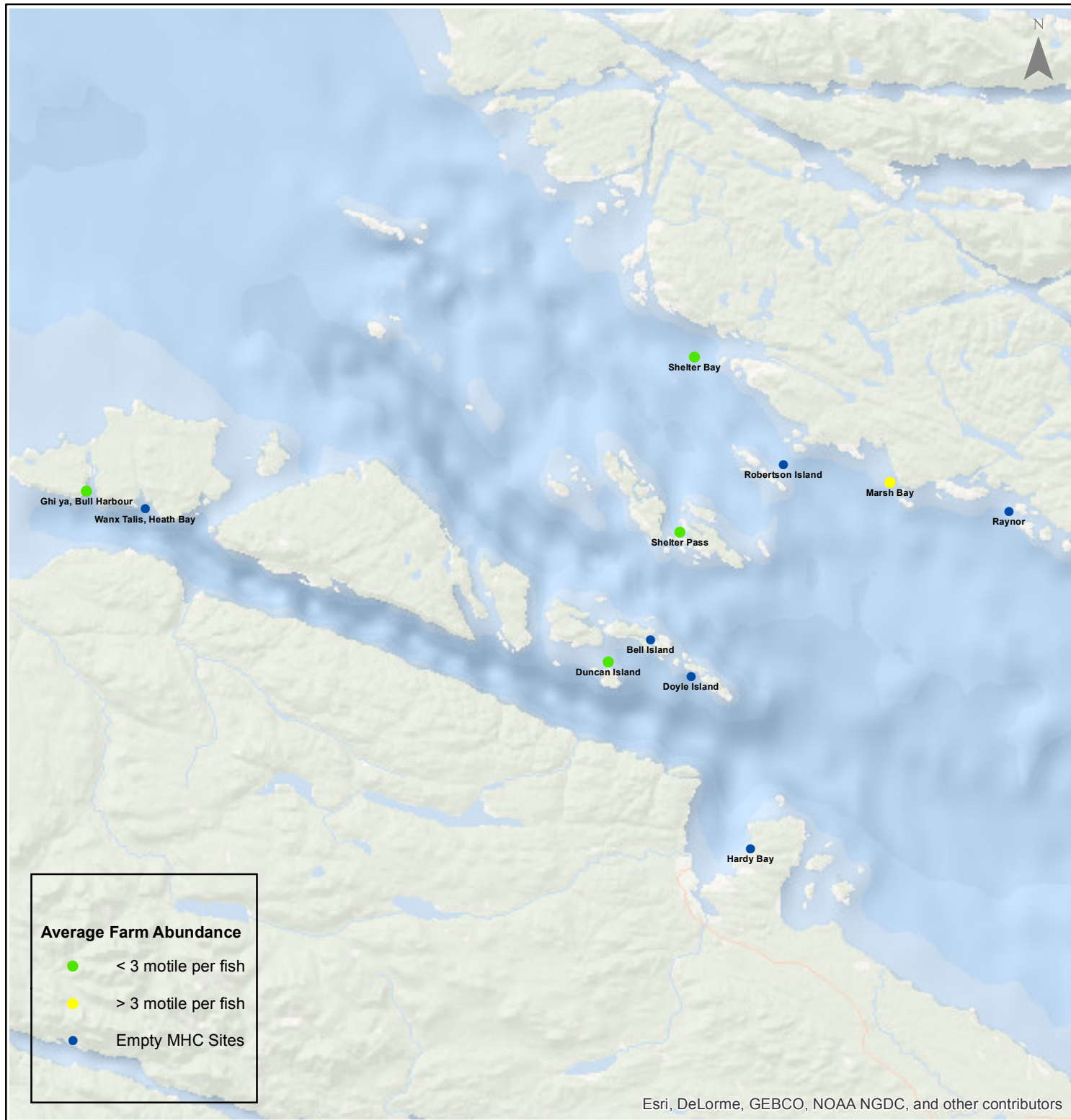


# Sea Lice Monitoring - Average Farm Abundance (AFA)

## Port Hardy - October 2016



1:450,000



Esri, DeLorme, GEBCO, NOAA NGDC, and other contributors

0 3.5 7 14 21 28 Kilometers

Coordinate System: WGS 1984 Web Mercator Auxiliary Sphere

Author: BC Centre for Aquatic Health Sciences Society

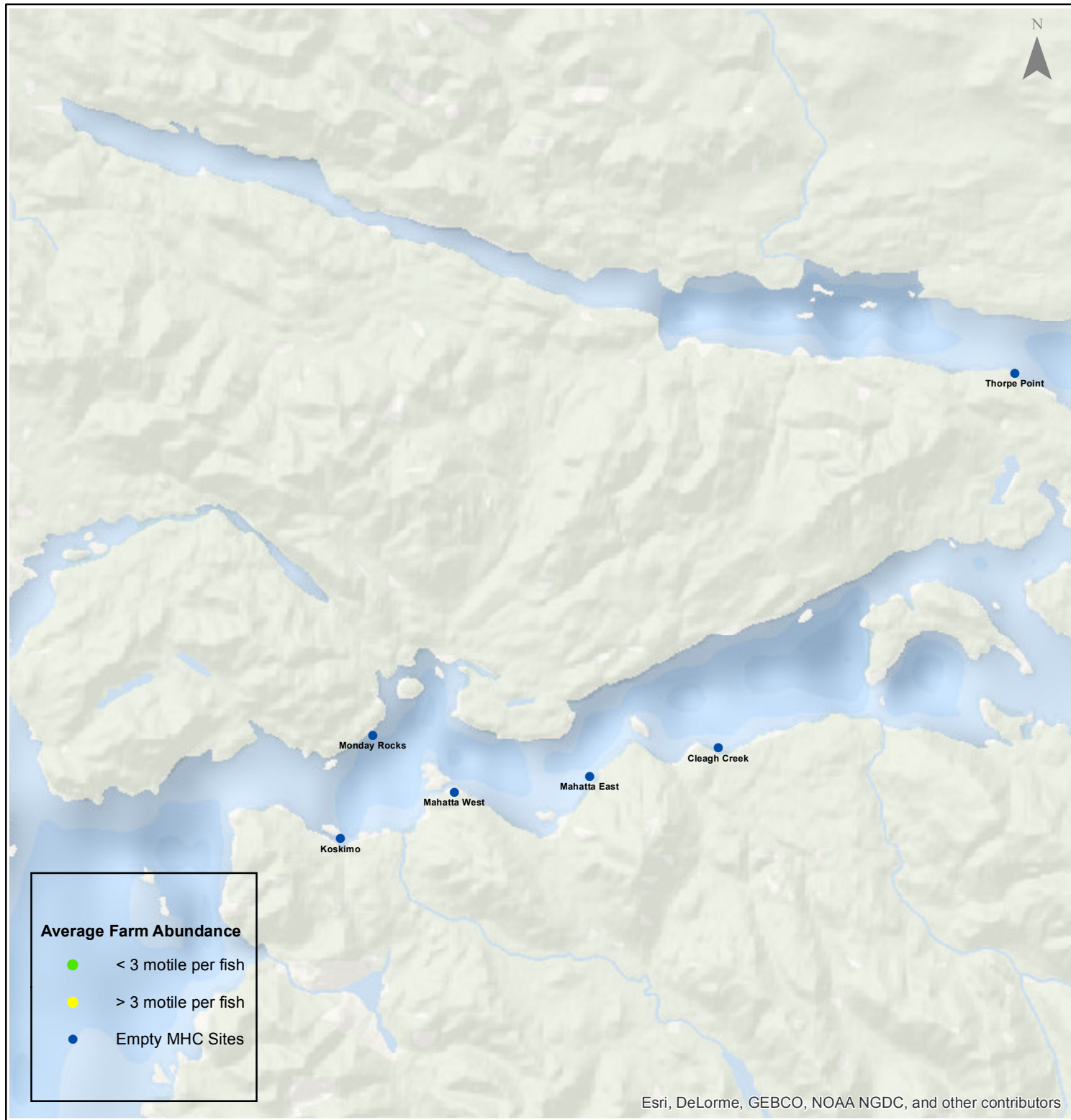
Date: 11/14/2016

# Sea Lice Monitoring - Average Farm Abundance (AFA)

## Quatsino - October 2016



1:250,000



Esri, DeLorme, GEBCO, NOAA NGDC, and other contributors

0 1.753.5 7 10.5 14 Kilometers

Coordinate System: WGS 1984 Web Mercator Auxiliary Sphere

Author: BC Centre for Aquatic Health Sciences Society

Date: 11/14/2016

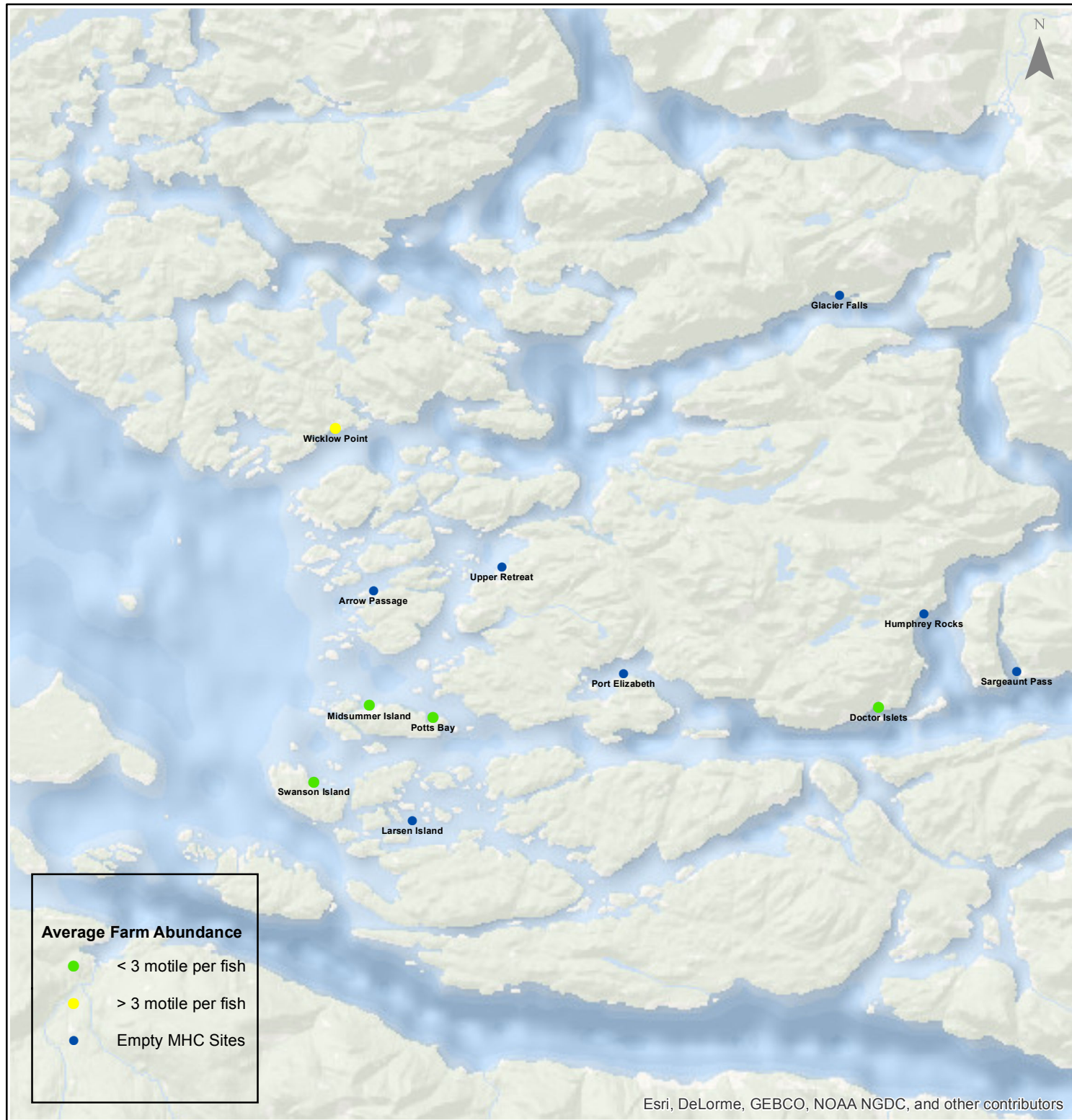


# Sea Lice Monitoring - Average Farm Abundance (AFA)

## Broughton - October 2016



1:450,000



Esri, DeLorme, GEBCO, NOAA NGDC, and other contributors

0 3.5 7 14 21 28 Kilometers

Coordinate System: WGS 1984 Web Mercator Auxiliary Sphere

Author: BC Centre for Aquatic Health Sciences Society

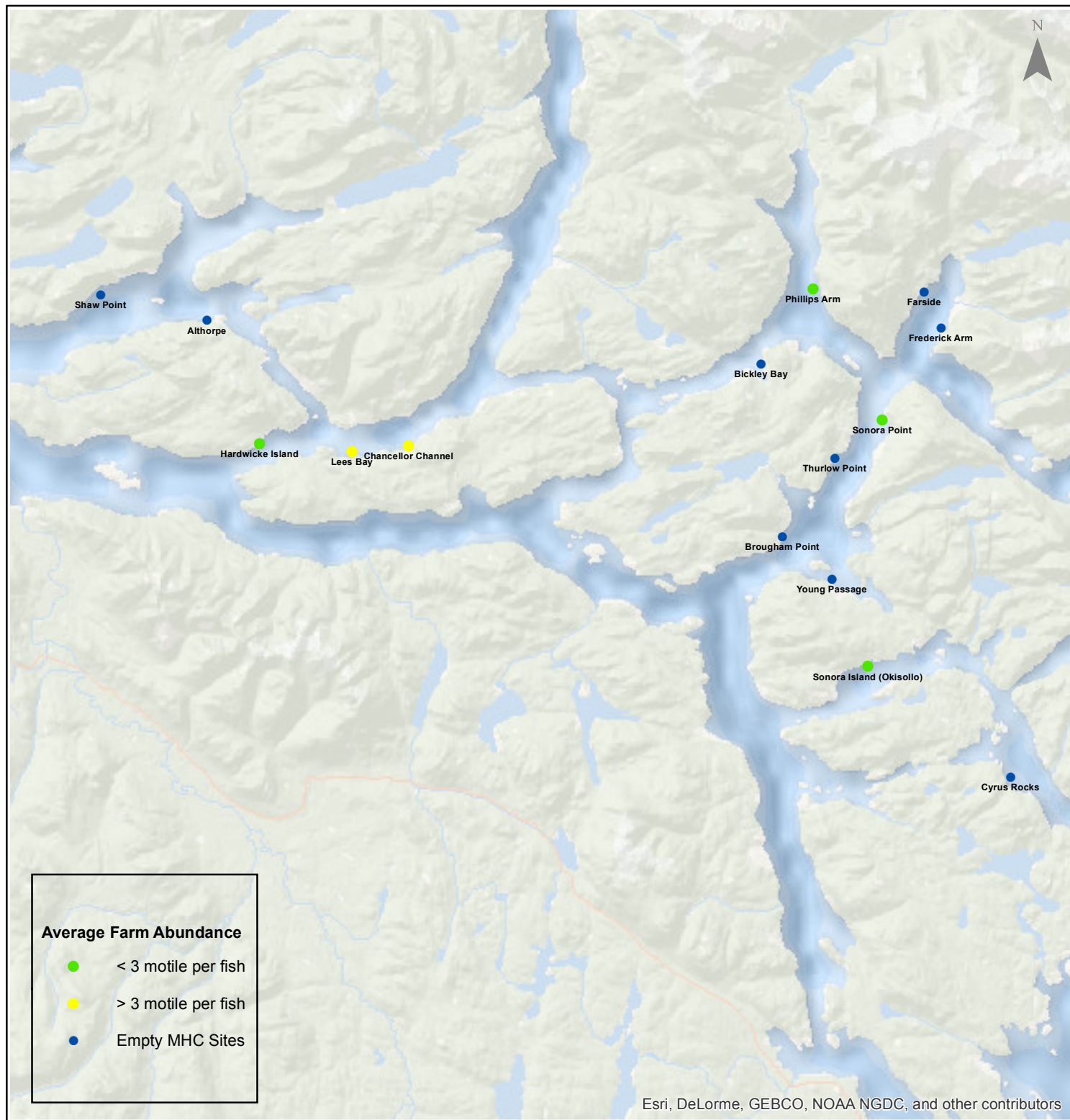
Date: 11/14/2016

# Sea Lice Monitoring - Average Farm Abundance (AFA)

## Campbell River - October 2016



1:450,000



Esri, DeLorme, GEBCO, NOAA NGDC, and other contributors

0 3.5 7 14 21 28 Kilometers

Coordinate System: WGS 1984 Web Mercator Auxiliary Sphere

Author: BC Centre for Aquatic Health Sciences Society

Date: 11/14/2016

Sea Lice Monitoring - Average Farm Abundance (AFA)

SiteArea	Facility	Date Sampled	Motile L. salmonis AFA	Memo	EMB* Rx Start Date	H2O2** Rx Start Date
Broughton	Arrow Passage	10 2016		Fallow		
Broughton	Doctor Islets	10 2016	0.46		22-May-16	
Broughton	Glacier Falls	10 2016		No counts due to low oxygen levels, Harvesting	18-Feb-16	
Broughton	Humphrey Rocks	10 2016		Fallow		
Broughton	Larsen Island	10 2016		Fallow		
Broughton	Midsummer Island	10 2016	2.38		14-Feb-16	
Broughton	Port Elizabeth	10 2016		Fallow		
Broughton	Potts Bay	10 2016	1.22		23-Jan-16	
Broughton	Sargeant Pass	10 2016		Fallow as Oct 27, 2016	28-Feb-16	
Broughton	Swanson Island	10 2016	0.63			
Broughton	Upper Retreat	10 2016		Fallow		
Broughton	Wicklow Point	10 2016	3.81	Treatment pending		
Campbell River	Althorpe	10 2016		Fallow		
Campbell River	Bickley Bay	10 2016		Fallow		
Campbell River	Brougham Point	10 2016		Fallow		
Campbell River	Chancellor Channel	10 2016	6.22	Treatment pending		
Campbell River	Cyrus Rocks	10 2016		Fallow		
Campbell River	Dunsterville	10 2016		Fallow		
Campbell River	Egerton Creek	10 2016		Fallow		
Campbell River	Farside	10 2016		Fallow		
Campbell River	Frederick Arm	10 2016		Fallow		
Campbell River	Hardwicke Island	10 2016	1.21	Treatment pending		
Campbell River	Lees Bay	10 2016	4.23	Treatment pending		10-May-16
Campbell River	Phillips Arm	10 2016	0.78			
Campbell River	Read Island	10 2016		Fallow		
Campbell River	Shaw Point	10 2016		Fallow		
Campbell River	Sonora Island (Okisollo)	10 2016	0.80		24-Apr-16	
Campbell River	Sonora Point	10 2016	1.10			5-Aug-16
Campbell River	Thurlow Point	10 2016		Fallow		
Campbell River	Young Passage	10 2016		Fallow		
Klemtu	Alexander Inlet	10 2016		Stocking during October		
Klemtu	Cougar Bay	10 2016		Fallow		
Klemtu	Goat Cove	10 2016	9.45	Harvesting - Site to be fallow first week of November	19-May-16	25-Feb-16
Klemtu	Jackson Pass	10 2016	17.73	H2O2		23-Oct-16
Klemtu	Kid Bay	10 2016		Fallow		
Klemtu	Lime Point	10 2016		Fallow		
Klemtu	Lochalsh	10 2016		Fallow		
Klemtu	Sheep Pass	10 2016	10.61	H2O2	22-Jun-16	30-Oct-16
Port Hardy	Bell Island	10 2016				
Port Hardy	Doyle Island	10 2016		Fallow		
Port Hardy	Duncan Island	10 2016	1.31			27-Sep-16
Port Hardy	Ghi ya, Bull Harbour	10 2016	0.22		16-Jul-16	21-Mar-16
Port Hardy	Hardy Bay	10 2016		Fallow		
Port Hardy	Marsh Bay	10 2016	6.19	Harvesting	27-Apr-16	
Port Hardy	Raynor	10 2016		Fallow		
Port Hardy	Robertson Island	10 2016		Fallow		
Port Hardy	Shelter Bay	10 2016	0.61		1-Mar-16	
Port Hardy	Shelter Pass	10 2016	1.17			
Port Hardy	Wanx Talis, Heath Bay	10 2016		Fallow		
Quatsino	Cleagh Creek	10 2016		Fallow		
Quatsino	Koskimo	10 2016		Stocking during October		
Quatsino	Mahatta East	10 2016		Fallow		
Quatsino	Mahatta West	10 2016		Fallow		
Quatsino	Monday Rocks	10 2016		Stocking during October		
Quatsino	Thorpe Point	10 2016		Fallow		

\*Enamectin Benzoate (Brand Name SLICE )

