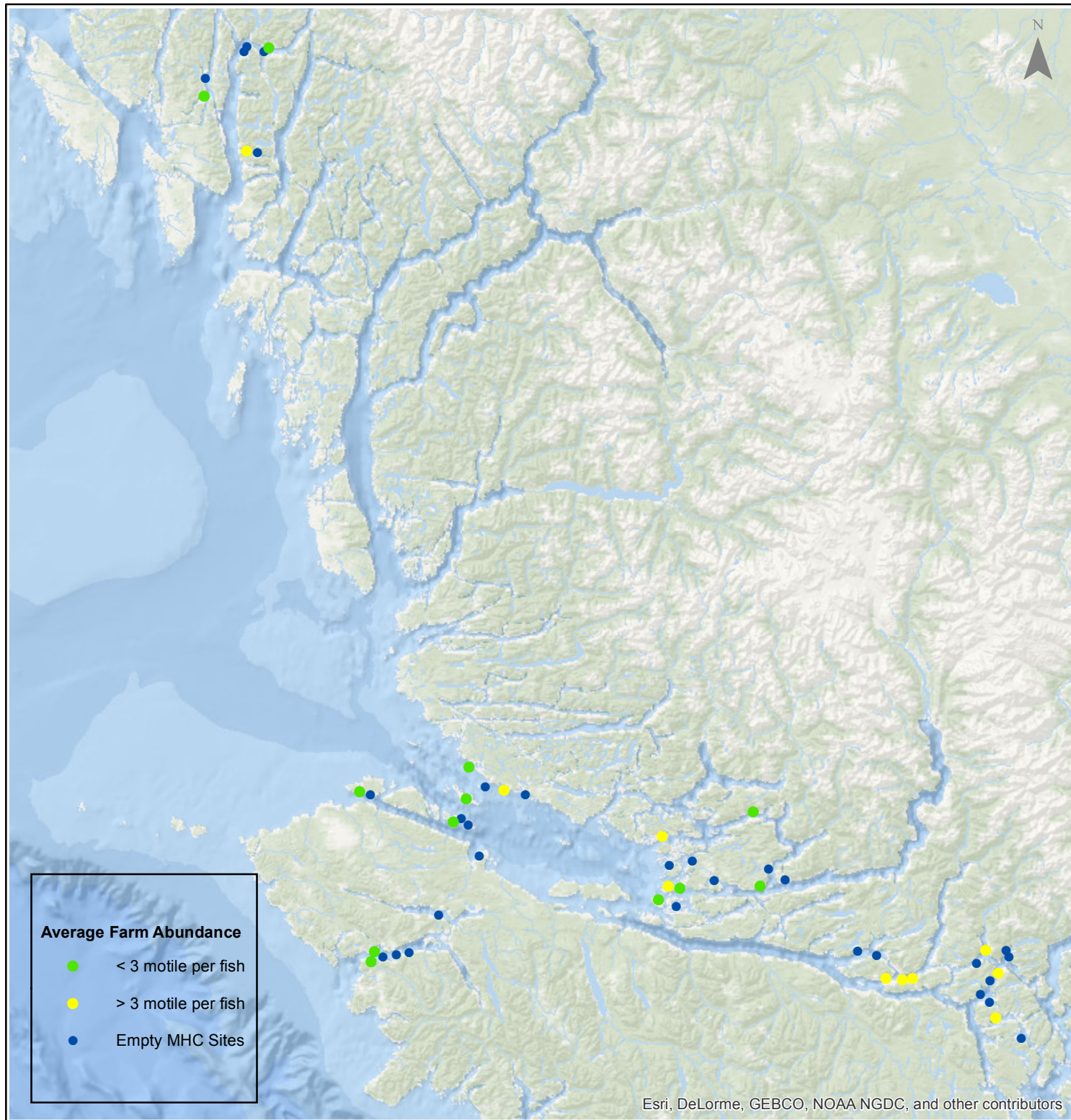


# Sea Lice Monitoring - Average Farm Abundance (AFA)

*All Sites - November 2016*



1:2,500,000



Esri, DeLorme, GEBCO, NOAA NGDC, and other contributors

Coordinate System: WGS 1984 Web Mercator Auxiliary Sphere

Author: BC Centre for Aquatic Health Sciences Society

Date: 12/14/2016

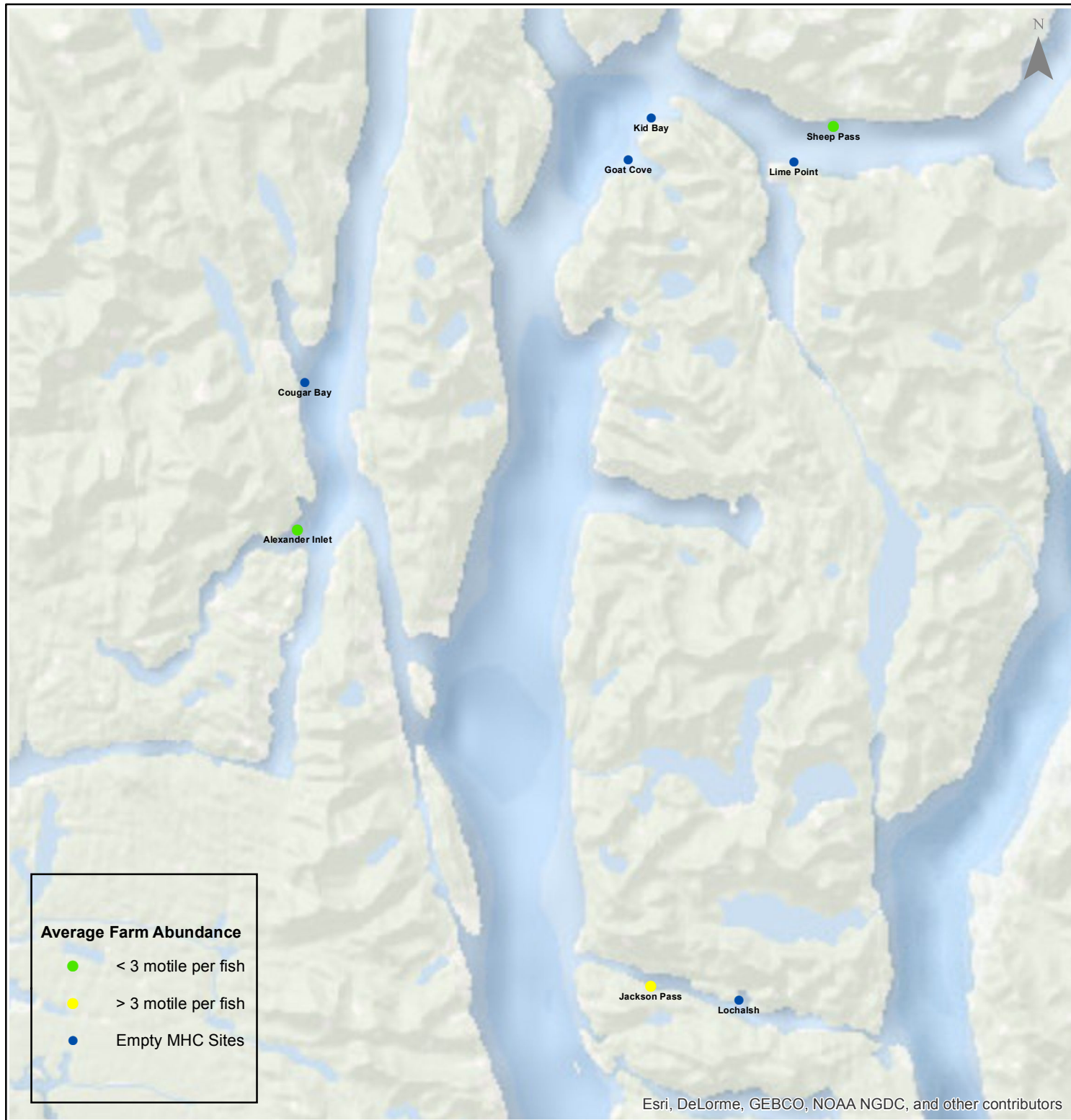
0 15 30 60 90 120 Kilometers

# Sea Lice Monitoring - Average Farm Abundance (AFA)

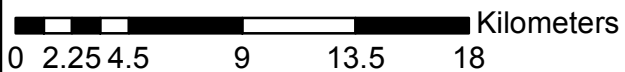
*Klemtu - November 2016*



1:300,000



Esri, DeLorme, GEBCO, NOAA NGDC, and other contributors



Coordinate System: WGS 1984 Web Mercator Auxiliary Sphere

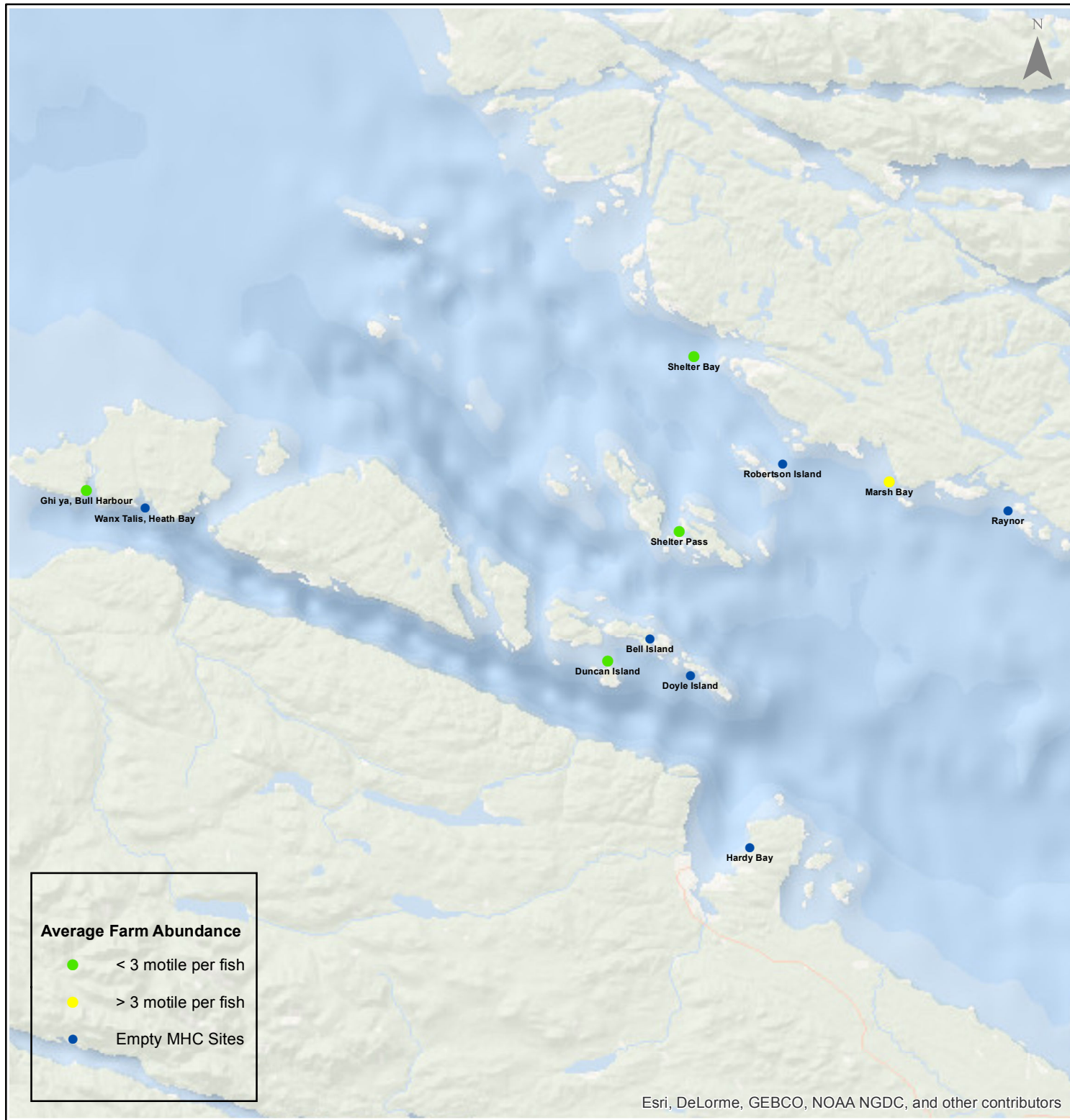
Author: BC Centre for Aquatic Health Sciences Society

Date: 12/14/2016

# Sea Lice Monitoring - Average Farm Abundance (AFA) Port Hardy - November 2016



1:450,000



0 3.5 7 14 21 28 Kilometers

Coordinate System: WGS 1984 Web Mercator Auxiliary Sphere

Author: BC Centre for Aquatic Health Sciences Society

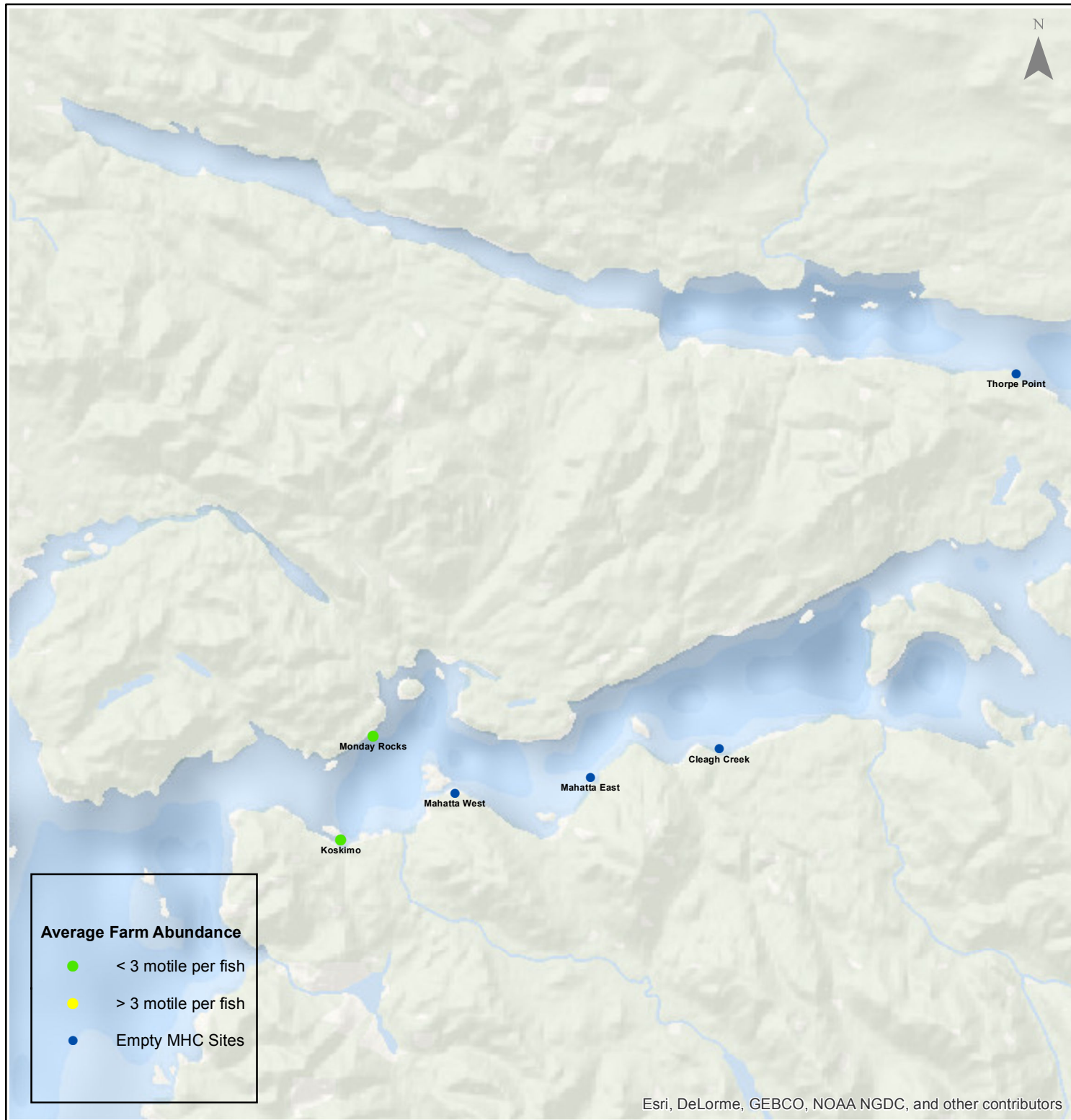
Date: 12/14/2016

# Sea Lice Monitoring - Average Farm Abundance (AFA)

## Quatsino - November 2016



1:250,000



Esri, DeLorme, GEBCO, NOAA NGDC, and other contributors

0 1.753.5 7 10.5 14 Kilometers

Coordinate System: WGS 1984 Web Mercator Auxiliary Sphere

Author: BC Centre for Aquatic Health Sciences Society

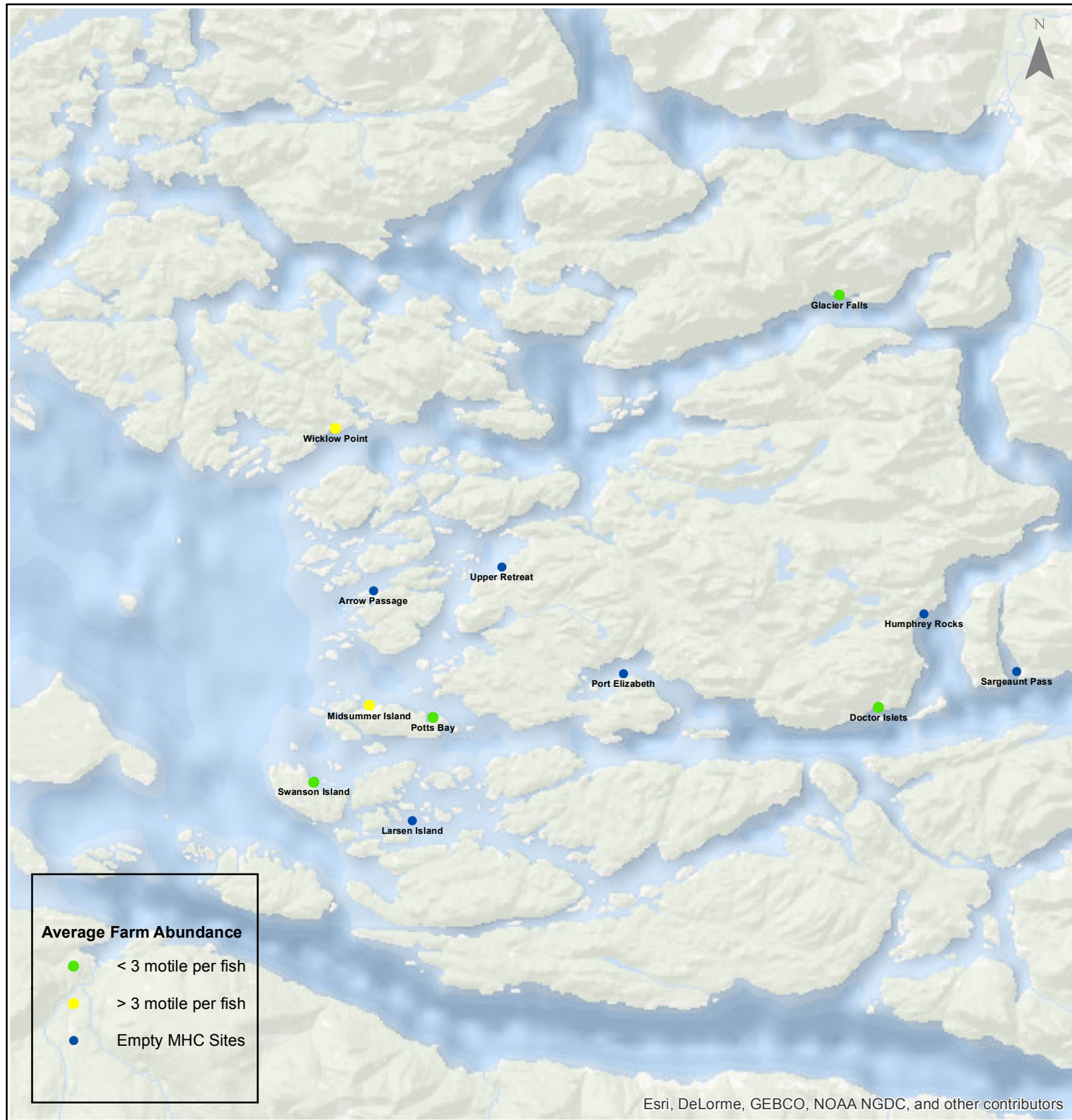
Date: 12/14/2016

# Sea Lice Monitoring - Average Farm Abundance (AFA)

## *Broughton - November 2016*



1:450,000



Esri, DeLorme, GEBCO, NOAA NGDC, and other contributors

0 3.5 7 14 21 28 Kilometers

Coordinate System: WGS 1984 Web Mercator Auxiliary Sphere

Author: BC Centre for Aquatic Health Sciences Society

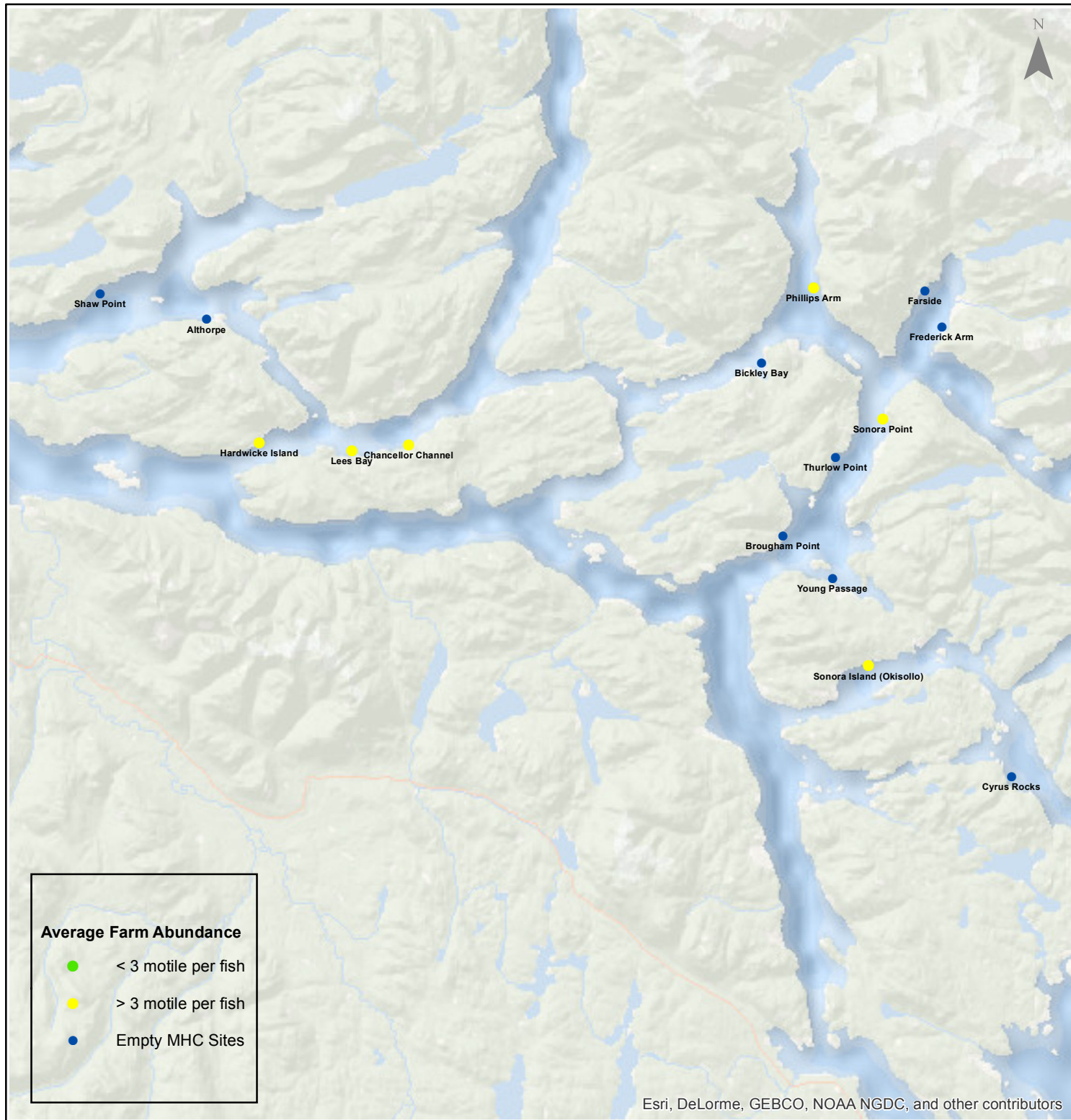
Date: 12/14/2016

# Sea Lice Monitoring - Average Farm Abundance (AFA)

## Campbell River - November 2016



1:450,000



0 3.5 7 14 21 28 Kilometers

Coordinate System: WGS 1984 Web Mercator Auxiliary Sphere

Author: BC Centre for Aquatic Health Sciences Society

Date: 12/14/2016

Sea Lice Monitoring - Average Farm Abundance (AFA)

SiteArea	Facility	Date Sampled	Motile L. salmonis AFA	Memo	EMB* Rx Start Date	H2O2** Rx Start Date
Broughton	Arrow Passage	11 2016		Fallow		
Broughton	Doctor Islets	11 2016	1.09		22-May-16	
Broughton	Glacier Falls	11 2016	2.73	Will be harvested out in December	18-Feb-16	
Broughton	Humphrey Rocks	11 2016		Fallow		
Broughton	Larsen Island	11 2016		Fallow		
Broughton	Midsummer Island	11 2016	5.58	Harvesting	14-Feb-16	
Broughton	Port Elizabeth	11 2016		Fallow		
Broughton	Potts Bay	11 2016	2.32		23-Jan-16	
Broughton	Sargeaunt Pass	11 2016		Fallow		
Broughton	Swanson Island	11 2016	2.46	Treatment pending		
Broughton	Upper Retreat	11 2016		Fallow		
Broughton	Wicklow Point	11 2016	3.04	Treatment pending		
Campbell River	Althorpe	11 2016		Recent transfer, fish moves from Shelter Pass		
Campbell River	Bickley Bay	11 2016		Fallow		
Campbell River	Brougham Point	11 2016		Fallow		
Campbell River	Chancellor Channel	11 2016	8.42	SLICE	21-Nov-16	
Campbell River	Cyrus Rocks	11 2016		Fallow		
Campbell River	Dunsterville	11 2016		Fallow		
Campbell River	Egerton Creek	11 2016		Fallow		
Campbell River	Farside	11 2016		Fallow		
Campbell River	Frederick Arm	11 2016		Fallow		
Campbell River	Hardwicke Island	11 2016	23.23	SLICE	21-Nov-16	
Campbell River	Lees Bay	11 2016	7.48	SLICE	20-Nov-16	10-May-16
Campbell River	Phillips Arm	11 2016	4.07	Treatment pending		
Campbell River	Read Island	11 2016		Fallow		
Campbell River	Shaw Point	11 2016		Fallow		
Campbell River	Sonora Island (Okisollo)	11 2016	3.47	Will be harvested out in December	24-Apr-16	
Campbell River	Sonora Point	11 2016	7.59	Treatment pending		5-Aug-16
Campbell River	Thurlow Point	11 2016		Fallow		
Campbell River	Young Passage	11 2016		Fallow		
Klemtu	Alexander Inlet	11 2016	0.87			
Klemtu	Cougar Bay	11 2016		Fallow		
Klemtu	Goat Cove	11 2016		Fallow		
Klemtu	Jackson Pass	11 2016	10.17	Treatment pending		23-Oct-16
Klemtu	Kid Bay	11 2016		Fallow		
Klemtu	Lime Point	11 2016		Fallow		
Klemtu	Lochalsh	11 2016		Fallow		
Klemtu	Sheep Pass	11 2016	1.69		22-Jun-16	30-Oct-16
Port Hardy	Bell Island	11 2016		Fallow		
Port Hardy	Doyle Island	11 2016		Recent transfer, H2O2 during fish moves from Shelter Pass		20-Nov-16
Port Hardy	Duncan Island	11 2016	2.52	Treatment pending		27-Sep-16
Port Hardy	Ghi ya, Bull Harbour	11 2016	0.44		16-Jul-16	21-Mar-16
Port Hardy	Hardy Bay	11 2016		Fallow		
Port Hardy	Marsh Bay	11 2016	7.82	Will be harvested out in December	27-Apr-16	
Port Hardy	Raynor	11 2016		Fallow		
Port Hardy	Robertson Island	11 2016		Fallow		
Port Hardy	Shelter Bay	11 2016	1.70		1-Mar-16	
Port Hardy	Shelter Pass	11 2016	1.27			
Port Hardy	Wanx Talis, Heath Bay	11 2016		Fallow		
Quatsino	Cleagh Creek	11 2016		Fallow		
Quatsino	Koskimo	11 2016	0.00			
Quatsino	Mahatta East	11 2016		Fallow		
Quatsino	Mahatta West	11 2016		Fallow		
Quatsino	Monday Rocks	11 2016	0.02			
Quatsino	Thorpe Point	11 2016		Fallow		

\*Emamectin Benzoate (Brand Name SLICE )

