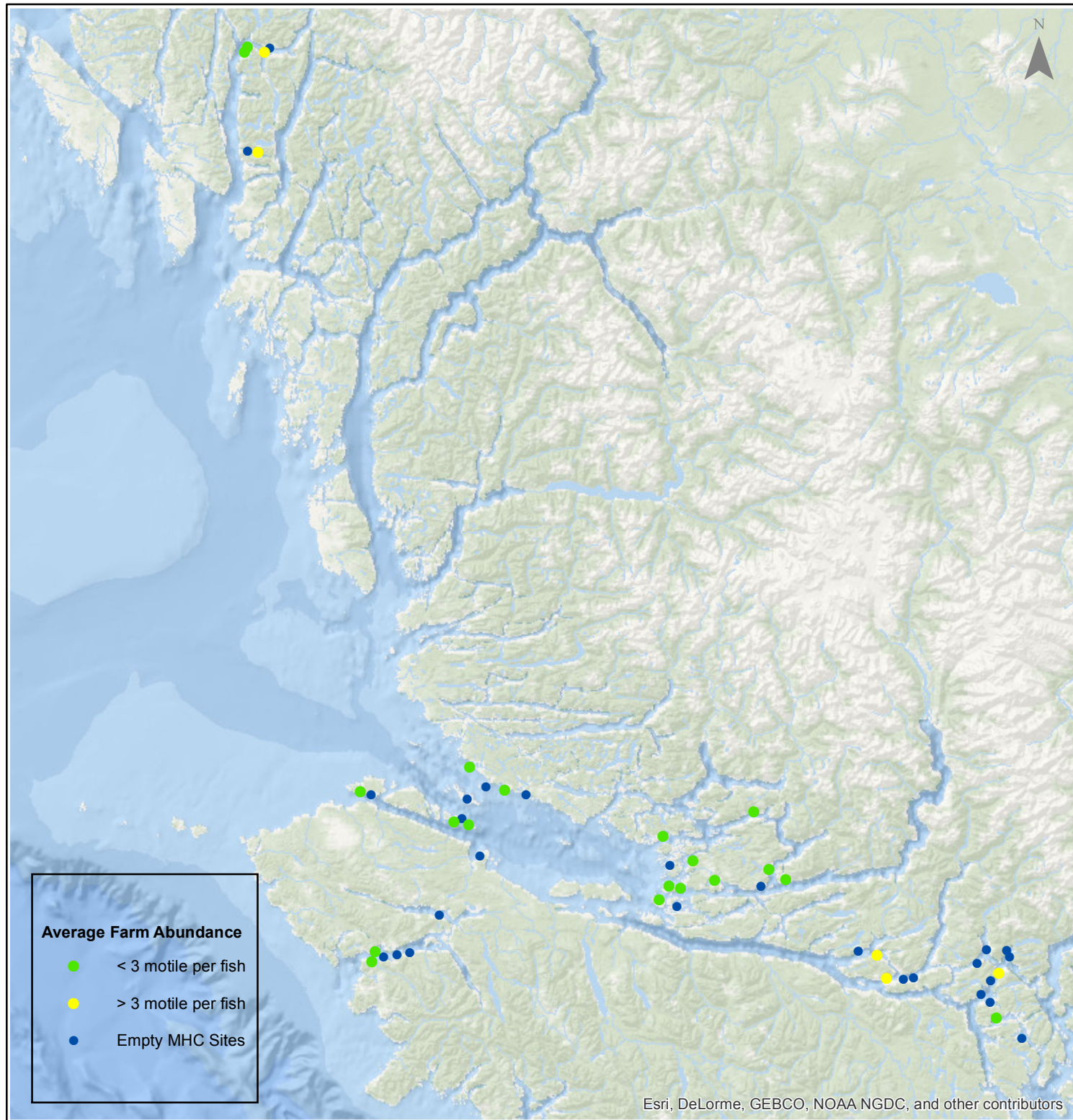


# Sea Lice Monitoring - Average Farm Abundance (AFA)

*All Sites - November 2015*



1:2,500,000



Esri, DeLorme, GEBCO, NOAA NGDC, and other contributors

Coordinate System: WGS 1984 Web Mercator Auxiliary Sphere

Author: BC Centre for Aquatic Health Sciences Society

Date: 12/11/2015

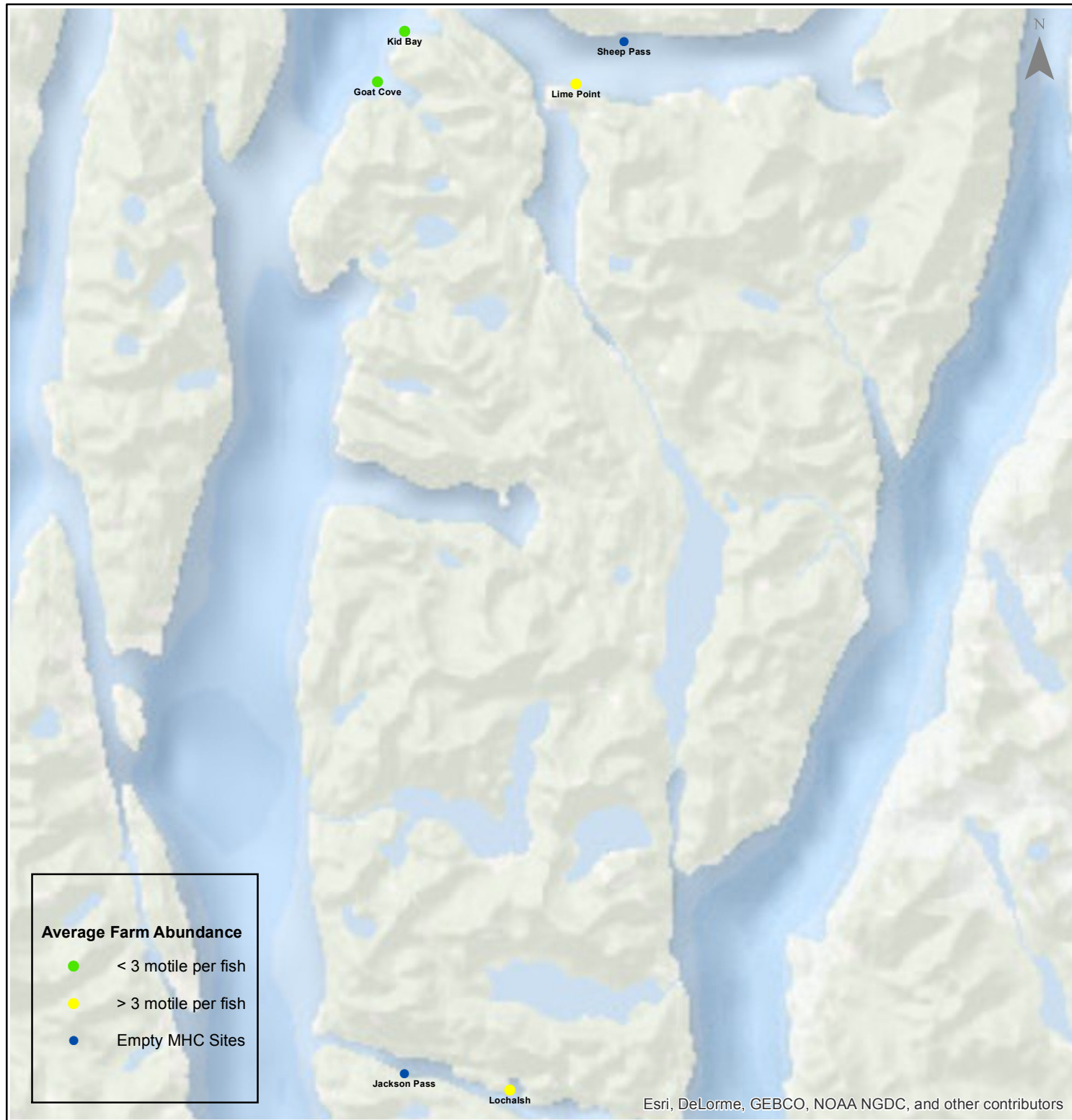
0 15 30 60 90 120 Kilometers

# Sea Lice Monitoring - Average Farm Abundance (AFA)

## *Klemtu - November 2015*



1:250,000



0 1.753.5 7 10.5 14 Kilometers

Coordinate System: WGS 1984 Web Mercator Auxiliary Sphere

Author: BC Centre for Aquatic Health Sciences Society

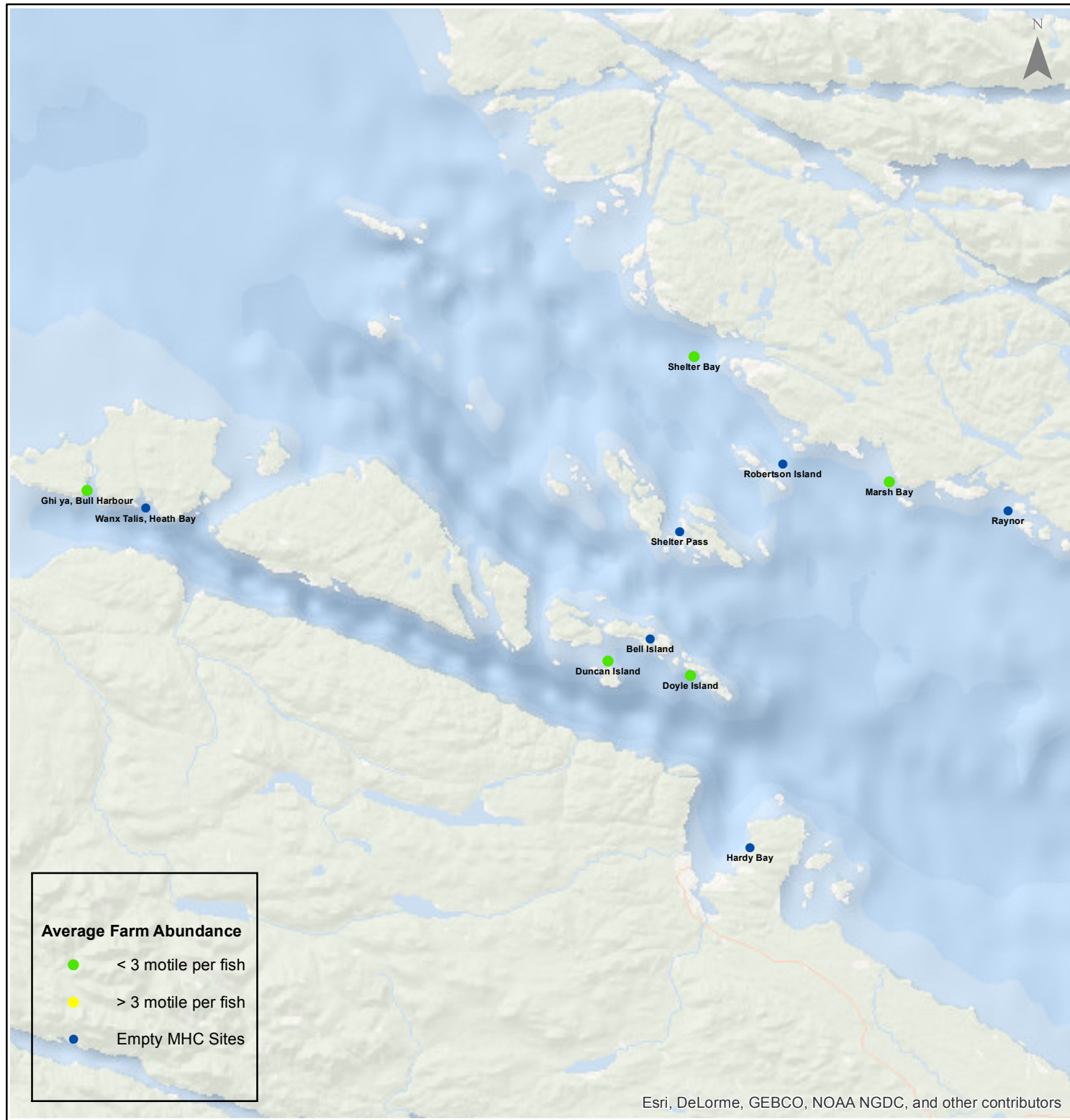
Date: 12/11/2015

# Sea Lice Monitoring - Average Farm Abundance (AFA)

## Port Hardy - November 2015



1:450,000



### Average Farm Abundance

- < 3 motile per fish
- > 3 motile per fish
- Empty MHC Sites

Esri, DeLorme, GEBCO, NOAA NGDC, and other contributors

0 3.5 7 14 21 28 Kilometers

Coordinate System: WGS 1984 Web Mercator Auxiliary Sphere

Author: BC Centre for Aquatic Health Sciences Society

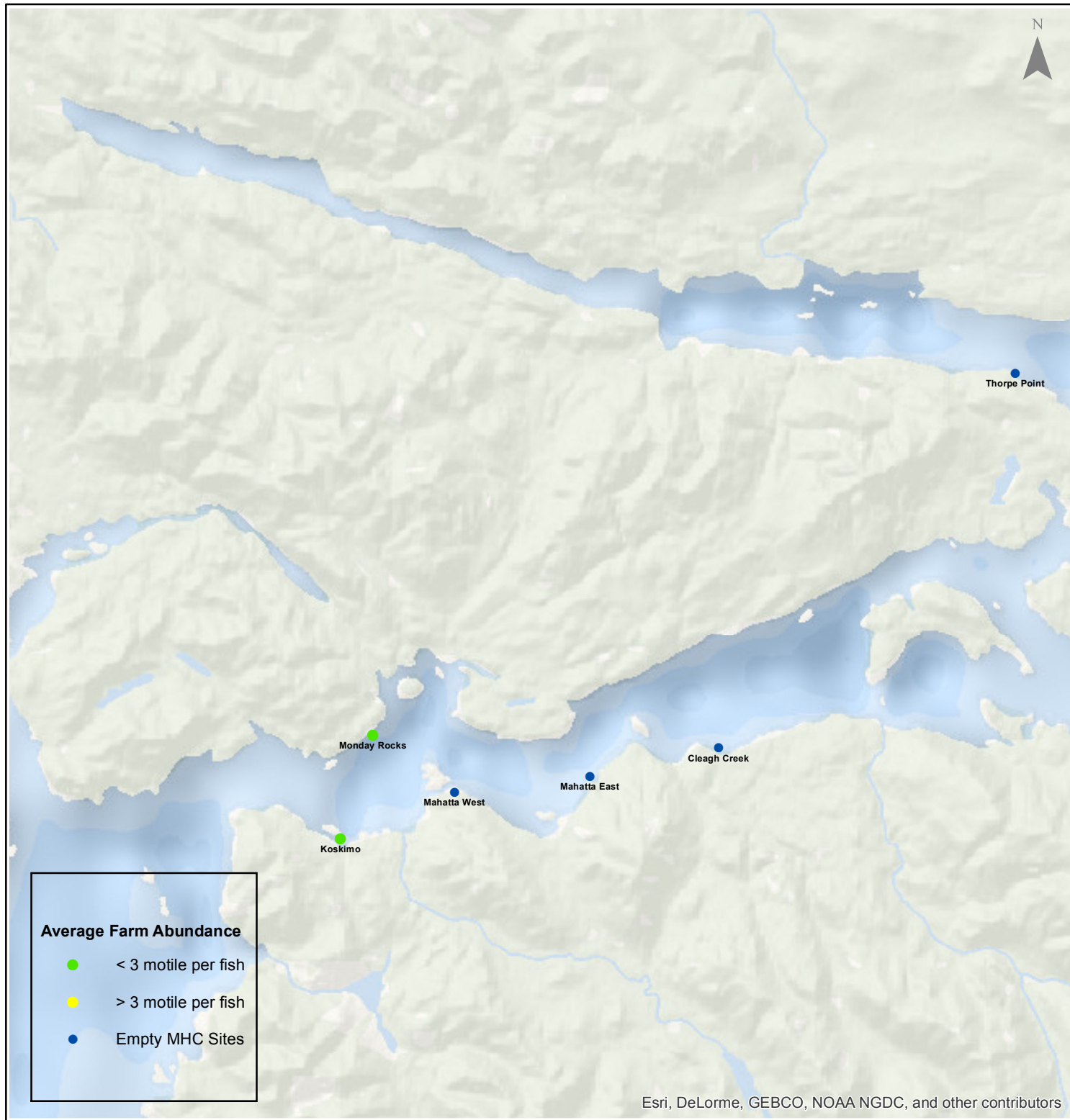
Date: 12/11/2015

# Sea Lice Monitoring - Average Farm Abundance (AFA)

## Quatsino - November 2015



1:250,000



Esri, DeLorme, GEBCO, NOAA NGDC, and other contributors

0 1.753.5 7 10.5 14 Kilometers

Coordinate System: WGS 1984 Web Mercator Auxiliary Sphere

Author: BC Centre for Aquatic Health Sciences Society

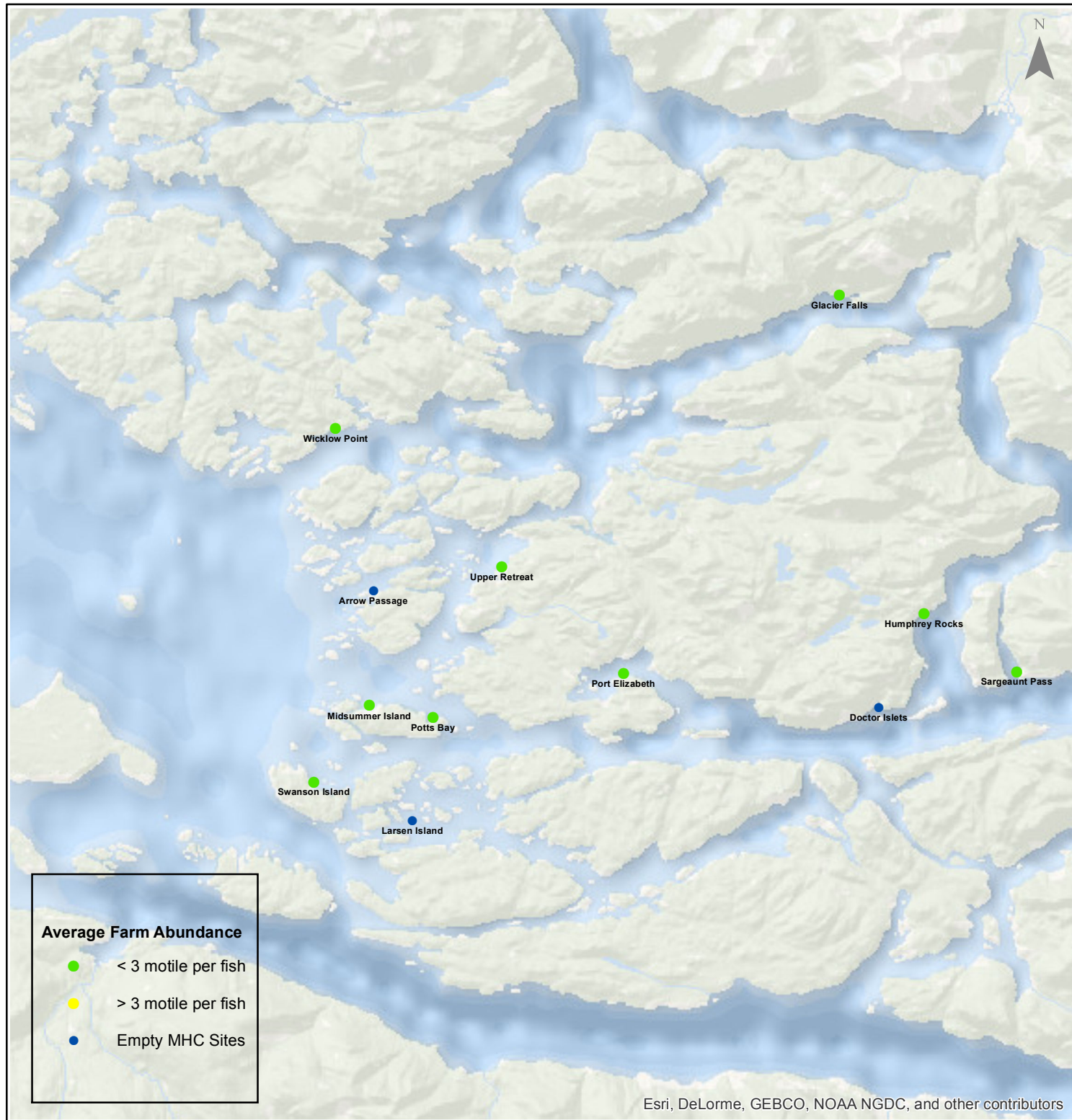
Date: 12/11/2015

# Sea Lice Monitoring - Average Farm Abundance (AFA)

## *Broughton - November 2015*



1:450,000



Esri, DeLorme, GEBCO, NOAA NGDC, and other contributors

0 3.5 7 14 21 28 Kilometers

Coordinate System: WGS 1984 Web Mercator Auxiliary Sphere

Author: BC Centre for Aquatic Health Sciences Society

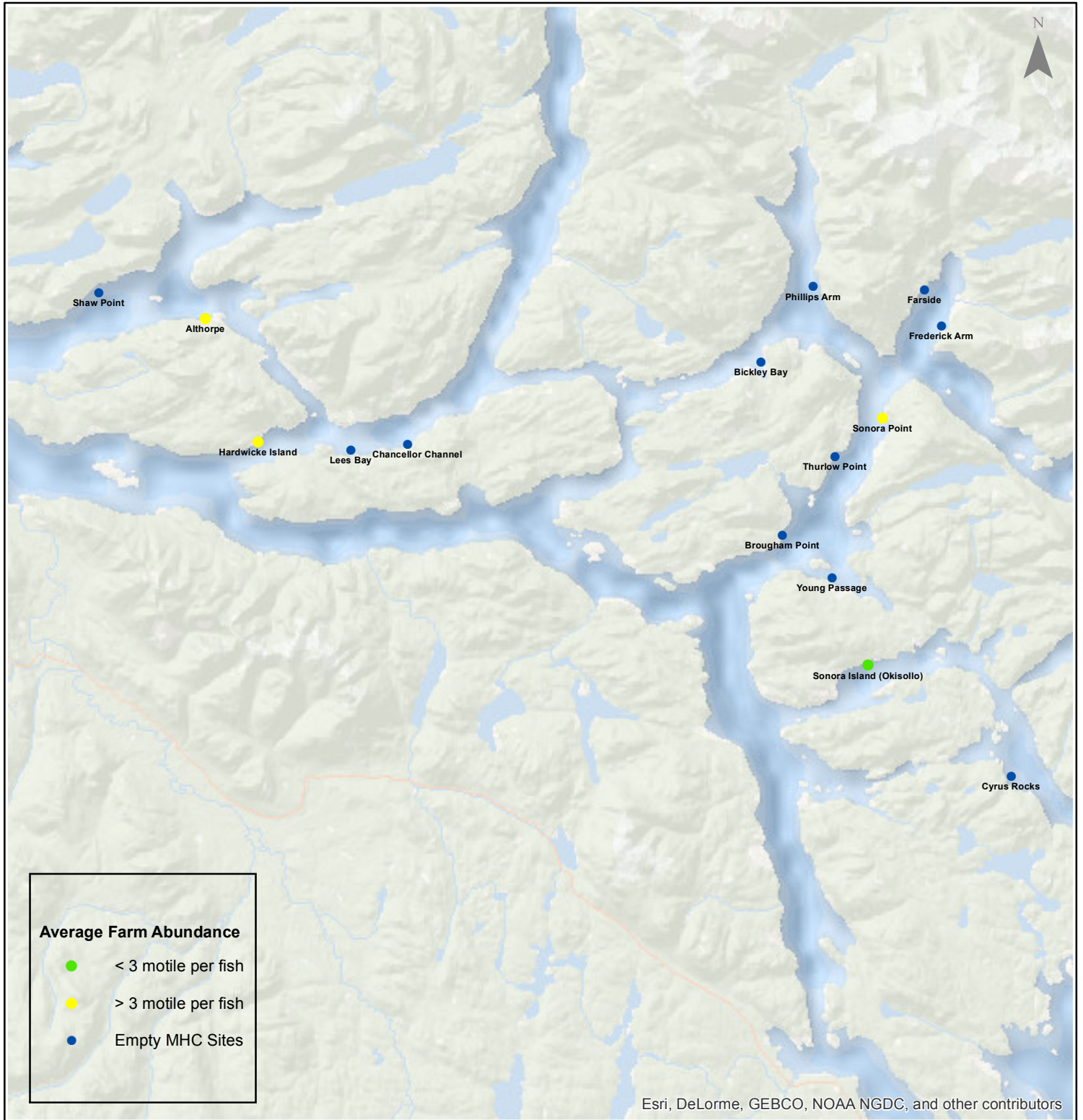
Date: 12/11/2015

# Sea Lice Monitoring - Average Farm Abundance (AFA)

## Campbell River - November 2015



1:450,000



Esri, DeLorme, GEBCO, NOAA NGDC, and other contributors

0 3.5 7 14 21 28 Kilometers

Coordinate System: WGS 1984 Web Mercator Auxiliary Sphere

Author: BC Centre for Aquatic Health Sciences Society

Date: 12/11/2015

Sea Lice Monitoring - Average Farm Abundance (AFA)

SiteArea	Facility	Date Sampled	Motile L. salmonis AFA	Memo	EMB* Rx Start Date	H2O2** Rx Start Date
Broughton	Arrow Passage	11 2015		Fallow		
Broughton	Doctor Islets	11 2015		Harvest ongoing, site to be empty first week of December	15-Feb-15	
Broughton	Glacier Falls	11 2015	1.05		6-Jun-15	
Broughton	Humphrey Rocks	11 2015	1.38			
Broughton	Larsen Island	11 2015		Fallow		
Broughton	Midsummer Island	11 2015	2.18	Fish transferred in from Glacier Falls and Bell Island.		
Broughton	Port Elizabeth	11 2015	0.00			
Broughton	Potts Bay	11 2015	2.97	Bi-weekly counts	13-Apr-15	
Broughton	Sargeant Pass	11 2015	0.12			
Broughton	Swanson Island	11 2015	2.03		15-Feb-15	
Broughton	Upper Retreat	11 2015	0.02			
Broughton	Wicklow Point	11 2015	1.02		29-Jun-15	
Campbell River	Aithorpe	11 2015	4.83	Treatment pending	13-Apr-15	
Campbell River	Bickley Bay	11 2015		Fallow		
Campbell River	Brougham Point	11 2015		Fallow		
Campbell River	Chancellor Channel	11 2015		Fallow		
Campbell River	Cyrus Rocks	11 2015		Fallow		
Campbell River	Dunsterville	11 2015		Fallow		
Campbell River	Egerton Creek	11 2015		Fallow		
Campbell River	Farside	11 2015		Fallow		
Campbell River	Frederick Arm	11 2015		Fallow		
Campbell River	Hardwicke Island	11 2015	6.96	SLICE	26-Nov-15	
Campbell River	Lees Bay	11 2015		Fallow		
Campbell River	Phillips Arm	11 2015		Fallow		
Campbell River	Read Island	11 2015		Fallow		
Campbell River	Shaw Point	11 2015		Fallow		
Campbell River	Sonora Island (Okisollo)	11 2015	0.34		10-Oct-15	
Campbell River	Sonora Point	11 2015	11.33	SLICE	23-Nov-15	
Campbell River	Thurlow Point	11 2015		Fallow		
Campbell River	Young Passage	11 2015		Fallow		
Freshwater	Glacial Creek	11 2015		broodstock in their spawning year		
Klemtu	Goat Cove	11 2015	1.46	SLICE	1-Nov-15	16-Oct-15
Klemtu	Jackson Pass	11 2015		Fallow		
Klemtu	Kid Bay	11 2015	2.93	SLICE	1-Nov-15	29-Sep-15
Klemtu	Lime Point	11 2015	24.60	Site empty Nov 23, 2015	3-May-15	15-Apr-15
Klemtu	Lochalsh	11 2015	8.66	H2O2		20-Nov-15
Klemtu	Sheep Pass	11 2015		Fallow		
Kyuquot	Hohoe	11 2015		Fallow		
Port Hardy	Bell Island	11 2015		Empty Nov 1, 2015 finished moving fish to Midsummer		
Port Hardy	Doyle Island	11 2015	0.53		17-Jul-15	
Port Hardy	Duncan Island	11 2015	0.42		19-Jul-15	
Port Hardy	Ghi ya, Bull Harbour	11 2015	1.03			
Port Hardy	Hardy Bay	11 2015		Fallow		
Port Hardy	Marsh Bay	11 2015	1.06		27-Oct-15	
Port Hardy	Raynor	11 2015		Fallow		
Port Hardy	Robertson Island	11 2015		Fallow		
Port Hardy	Shelter Bay	11 2015	0.77			
Port Hardy	Shelter Pass	11 2015		Fallow		
Port Hardy	Wanx Talis, Heath Bay	11 2015		Fallow		
Quatsino	Cleagh Creek	11 2015		Fallow		
Quatsino	Koskimo	11 2015	1.43		20-Apr-15	8-Jul-15
Quatsino	Mahatta East	11 2015		Fallow		
Quatsino	Mahatta West	11 2015		Fallow		
Quatsino	Monday Rocks	11 2015	1.38		20-Apr-15	12-Jul-15
Quatsino	Thorpe Point	11 2015		Fallow		

\*Emamectin Benzoate (Brand Name SLICE)

\*\* Hydrogen Peroxide (Brand Name Interlox Paramove 50)

