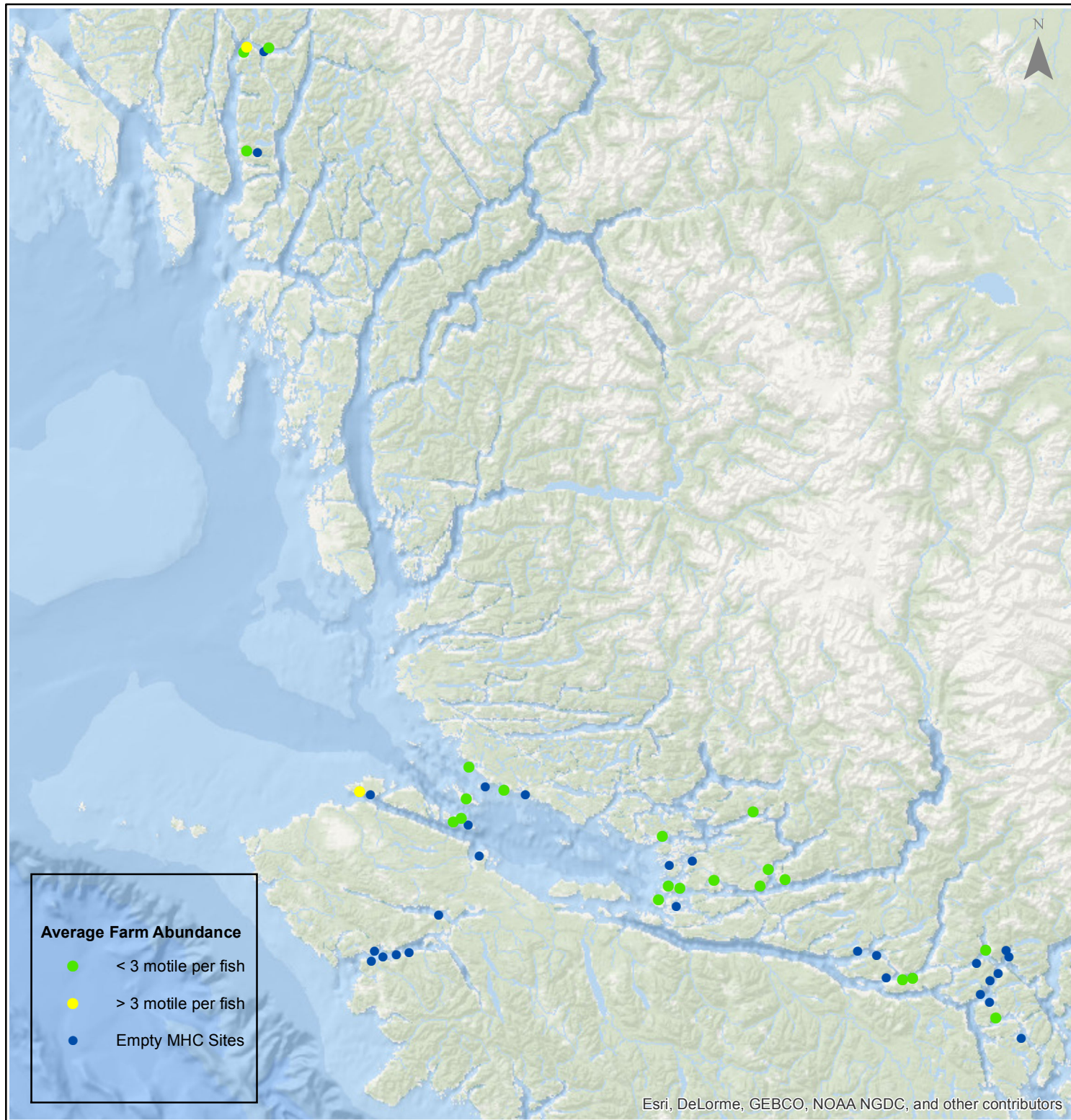


Sea Lice Monitoring - Average Farm Abundance (AFA)

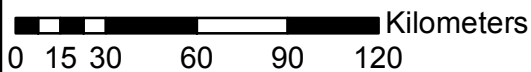
All Sites - July 2016



1:2,500,000



Esri, DeLorme, GEBCO, NOAA NGDC, and other contributors



Coordinate System: WGS 1984 Web Mercator Auxiliary Sphere

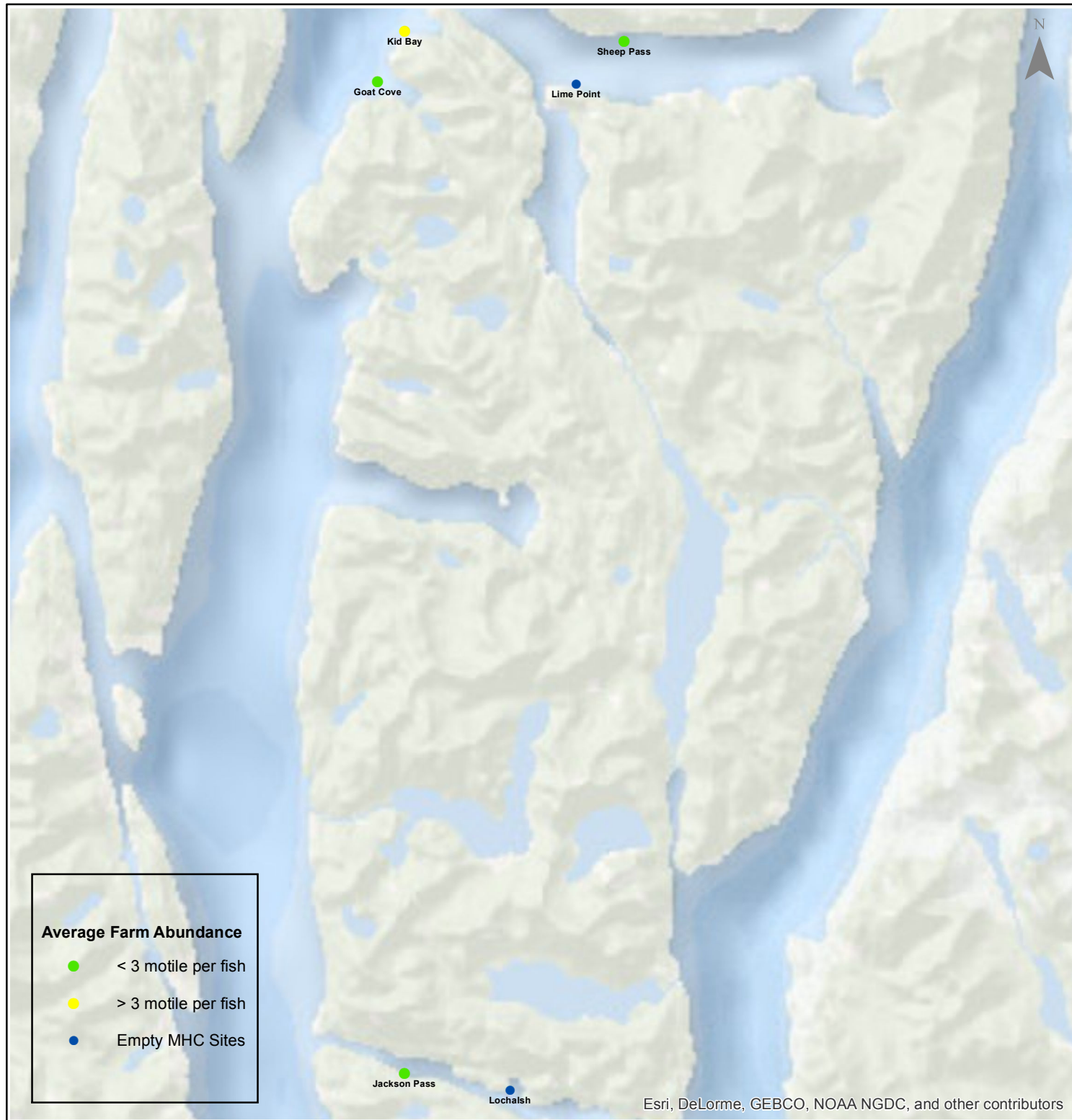
Author: BC Centre for Aquatic Health Sciences Society

Date: 8/11/2016

Sea Lice Monitoring - Average Farm Abundance (AFA) Klemtu - July 2016



1:250,000



0 1.753.5 7 10.5 14 Kilometers

Coordinate System: WGS 1984 Web Mercator Auxiliary Sphere

Author: BC Centre for Aquatic Health Sciences Society

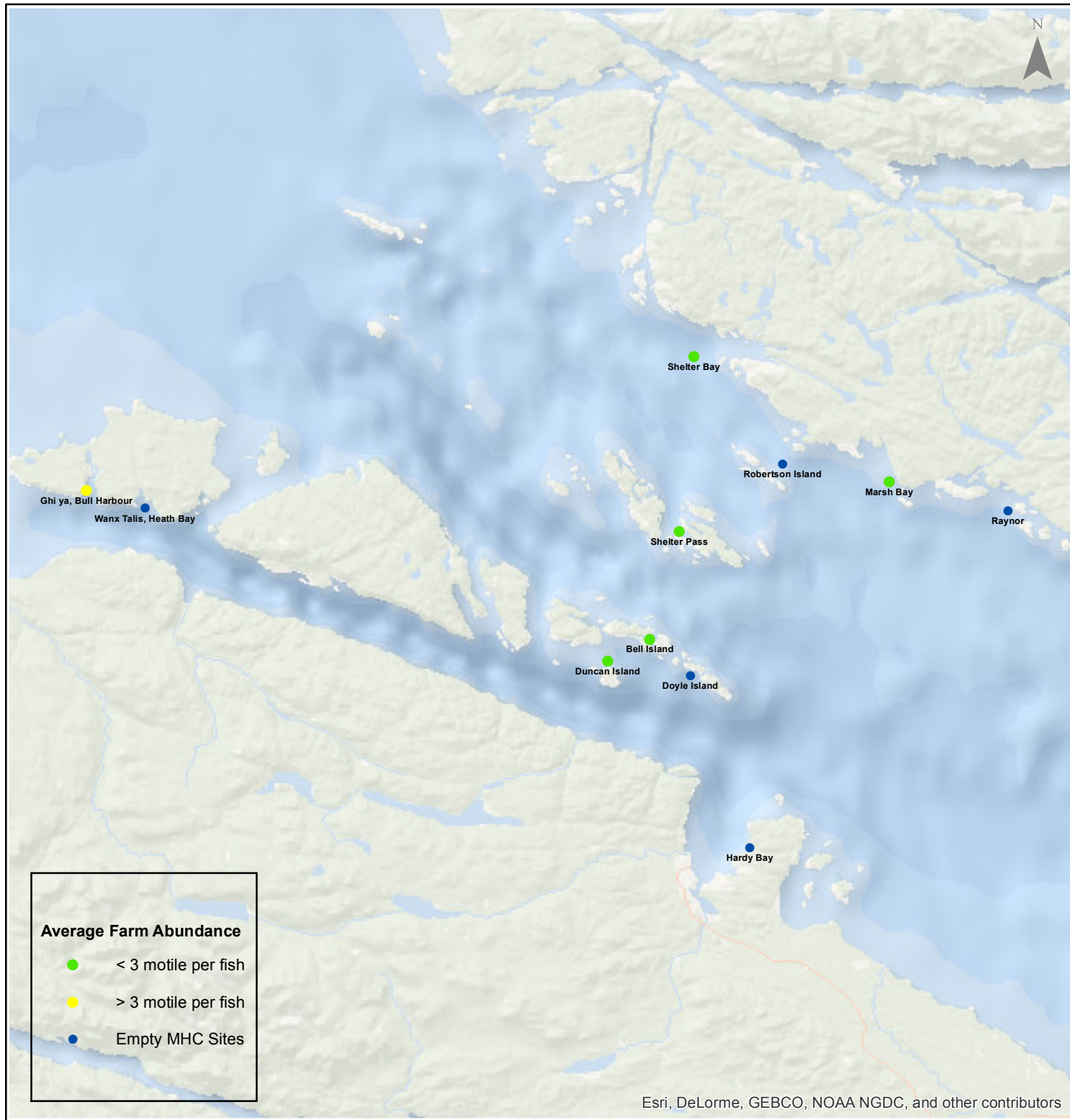
Date: 8/11/2016

Sea Lice Monitoring - Average Farm Abundance (AFA)

Port Hardy - July 2016



1:450,000



Esri, DeLorme, GEBCO, NOAA NGDC, and other contributors

0 3.5 7 14 21 28 Kilometers

Coordinate System: WGS 1984 Web Mercator Auxiliary Sphere

Author: BC Centre for Aquatic Health Sciences Society

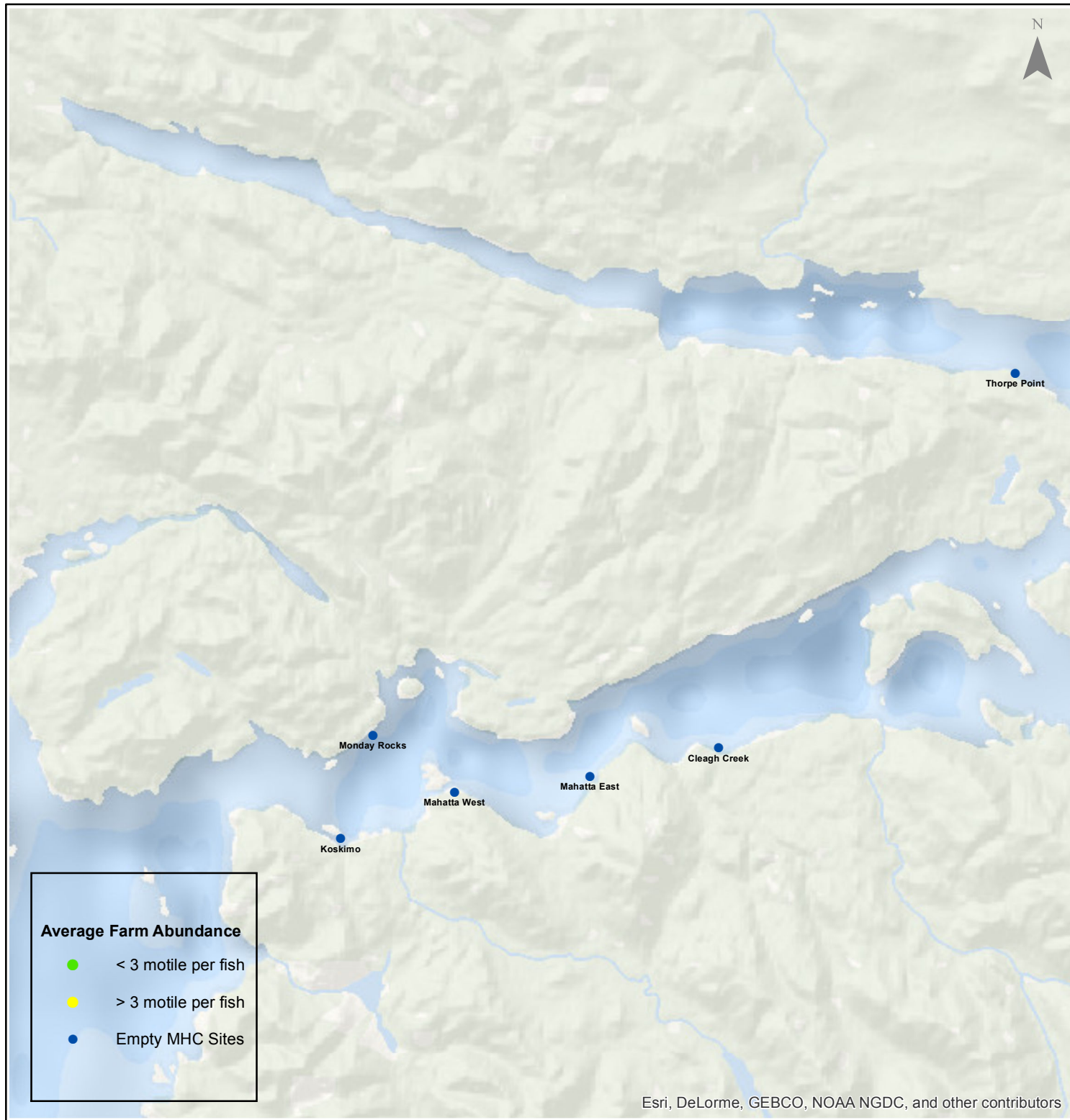
Date: 8/11/2016

Sea Lice Monitoring - Average Farm Abundance (AFA)

Quatsino - July 2016



1:250,000



Esri, DeLorme, GEBCO, NOAA NGDC, and other contributors

0 1.753.5 7 10.5 14 Kilometers

Coordinate System: WGS 1984 Web Mercator Auxiliary Sphere

Author: BC Centre for Aquatic Health Sciences Society

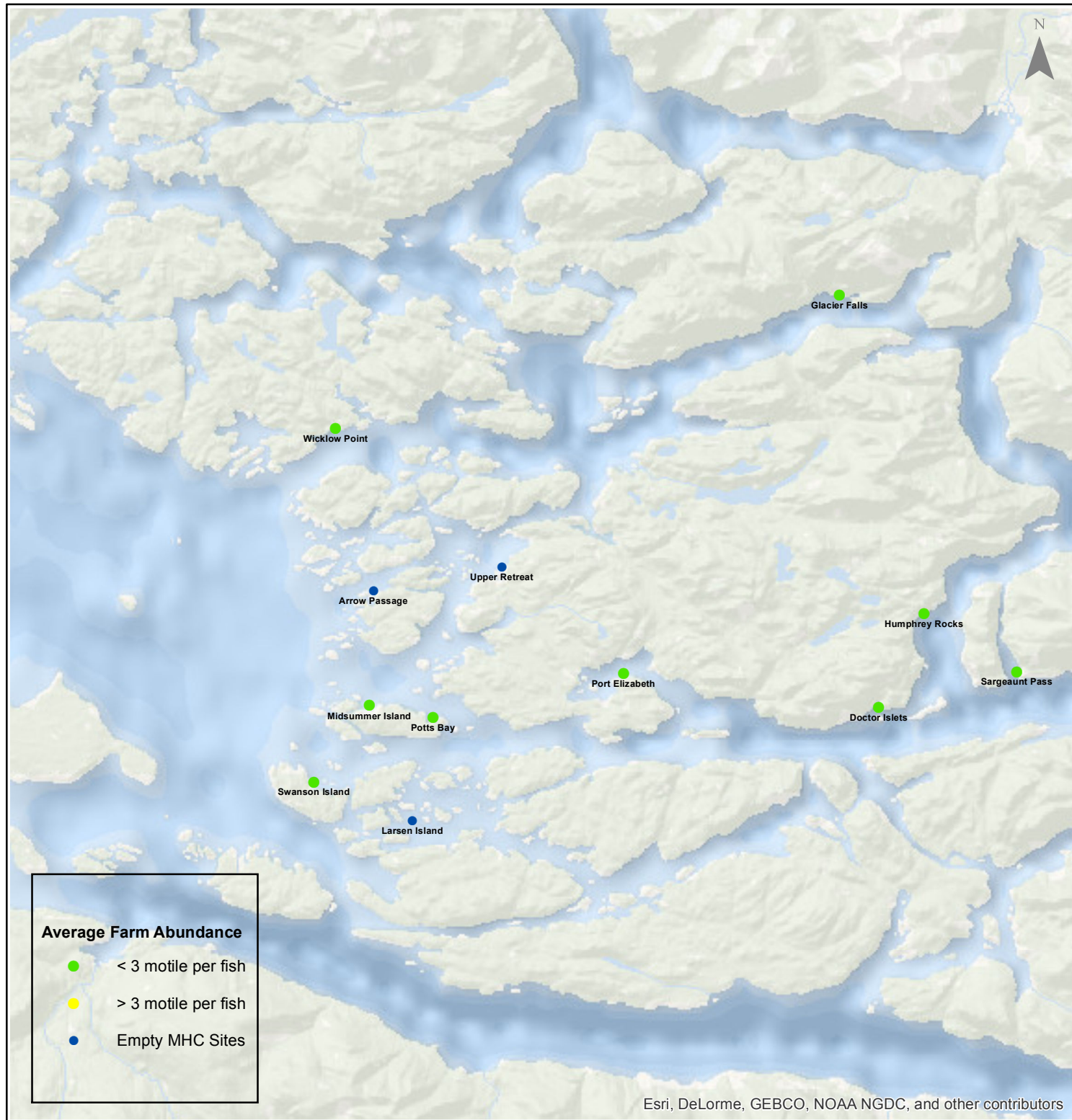
Date: 8/11/2016

Sea Lice Monitoring - Average Farm Abundance (AFA)

Broughton - July 2016



1:450,000



Esri, DeLorme, GEBCO, NOAA NGDC, and other contributors

0 3.5 7 14 21 28 Kilometers

Coordinate System: WGS 1984 Web Mercator Auxiliary Sphere

Author: BC Centre for Aquatic Health Sciences Society

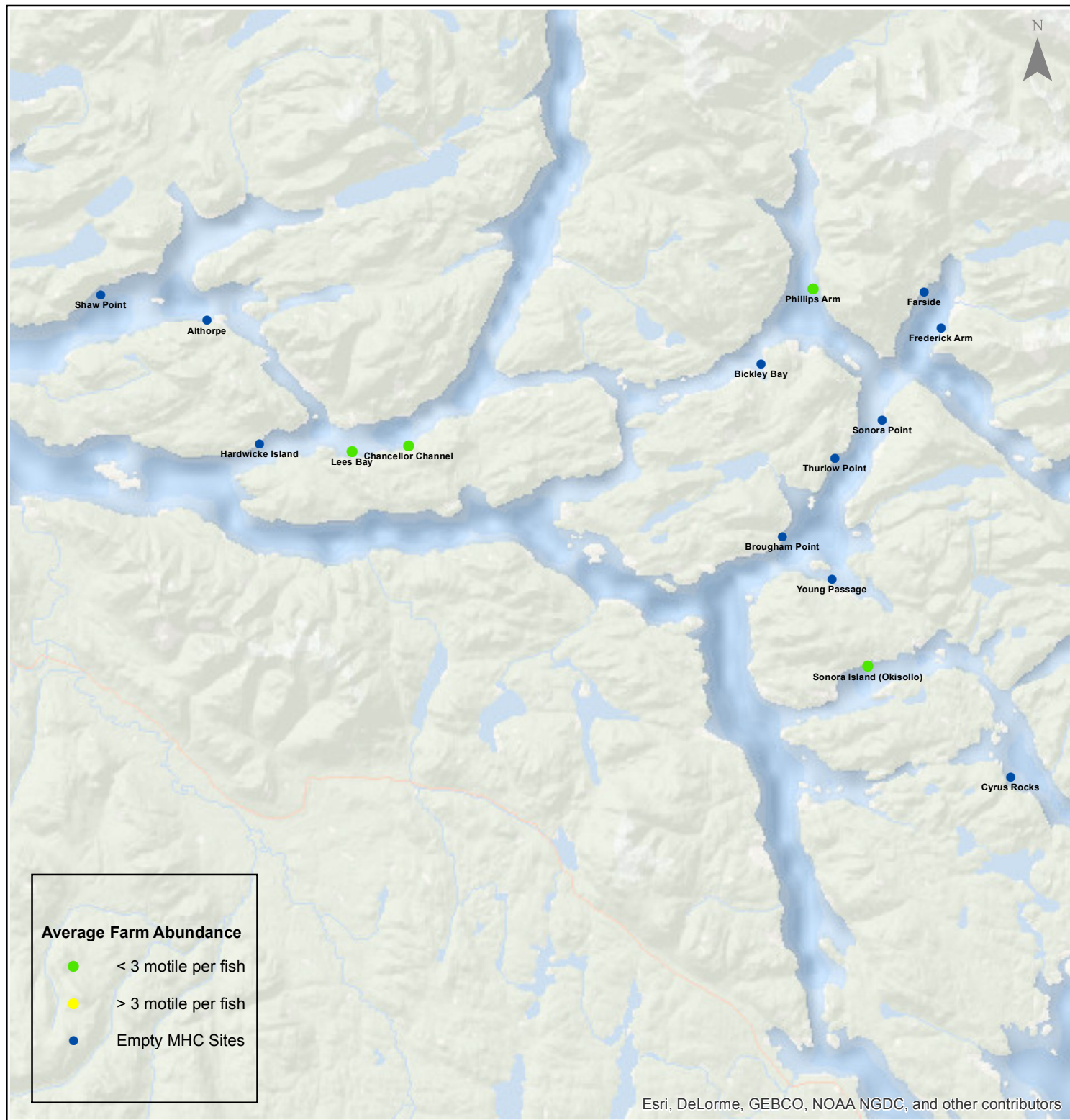
Date: 8/11/2016

Sea Lice Monitoring - Average Farm Abundance (AFA)

Campbell River - July 2016



1:450,000



0 3.5 7 14 21 28 Kilometers

Coordinate System: WGS 1984 Web Mercator Auxiliary Sphere

Author: BC Centre for Aquatic Health Sciences Society

Date: 8/11/2016

Sea Lice Monitoring - Average Farm Abundance (AFA)

SiteArea	Facility	Date Sampled	Motile L. salmonis AFA	Memo	EMB* Rx Start Date	H2O2** Rx Start Date
Broughton	Arrow Passage	7 2016		Fallow		
Broughton	Doctor Islets	7 2016	0.14		22-May-16	
Broughton	Glacier Falls	7 2016	1.02		18-Feb-16	
Broughton	Humphrey Rocks	7 2016	0.11		29-Feb-16	
Broughton	Larsen Island	7 2016		Fallow		
Broughton	Midsummer Island	7 2016	0.08		14-Feb-16	
Broughton	Port Elizabeth	7 2016	0.15		20-Feb-16	
Broughton	Potts Bay	7 2016	0.63		23-Jan-16	
Broughton	Sargeaunt Pass	7 2016	0.01		28-Feb-16	
Broughton	Swanson Island	7 2016	0.37			
Broughton	Upper Retreat	7 2016		Fallow		
Broughton	Wicklow Point	7 2016	0.90			
Campbell River	Althorpe	7 2016		Fallow		
Campbell River	Bickley Bay	7 2016		Fallow		
Campbell River	Brougham Point	7 2016		Fallow		
Campbell River	Chancellor Channel	7 2016	1.56			
Campbell River	Cyrus Rocks	7 2016		Fallow		
Campbell River	Dunsterville	7 2016		Fallow		
Campbell River	Egerton Creek	7 2016		Fallow		
Campbell River	Farside	7 2016		Fallow		
Campbell River	Frederick Arm	7 2016		Fallow		
Campbell River	Hardwicke Island	7 2016		Fallow		
Campbell River	Lees Bay	7 2016	1.48			10-May-16
Campbell River	Phillips Arm	7 2016	0.23			
Campbell River	Read Island	7 2016		Fallow		
Campbell River	Shaw Point	7 2016		Fallow		
Campbell River	Sonora Island (Okisollo)	7 2016	0.37		24-Apr-16	
Campbell River	Sonora Point	7 2016		Fallow as of July 6, 2016		
Campbell River	Thurlow Point	7 2016		Fallow		
Campbell River	Young Passage	7 2016		Fallow		
Klemtu	Goat Cove	7 2016	2.26		19-May-16	25-Feb-16
Klemtu	Jackson Pass	7 2016	0.32			13-Jun-16
Klemtu	Kid Bay	6 2016	3.43	Harvesting and expected to be empty first week of August	1-Nov-15	28-Feb-16
Klemtu	Lime Point	7 2016		Fallow		
Klemtu	Lochalsh	7 2016		Fallow		
Klemtu	Sheep Pass	7 2016	0.74		22-Jun-16	25-Apr-16
Port Hardy	Bell Island	7 2016	0.93			
Port Hardy	Doyle Island	7 2016		Fallow		
Port Hardy	Duncan Island	7 2016	1.42			
Port Hardy	Ghi ya, Bull Harbour	7 2016	5.21	SLICE	16-Jul-16	21-Mar-16
Port Hardy	Hardy Bay	7 2016		Fallow		
Port Hardy	Marsh Bay	7 2016	0.31		27-Apr-16	
Port Hardy	Raynor	7 2016		Fallow		
Port Hardy	Robertson Island	7 2016		Fallow		
Port Hardy	Shelter Bay	7 2016	0.09		1-Mar-16	
Port Hardy	Shelter Pass	7 2016	0.64			
Port Hardy	Wanx Talis, Heath Bay	7 2016		Fallow		
Quatsino	Cleagh Creek	7 2016		Fallow		
Quatsino	Koskimo	7 2016		Fallow		
Quatsino	Mahatta East	7 2016		Fallow		
Quatsino	Mahatta West	7 2016		Fallow		
Quatsino	Monday Rocks	7 2016		Fallow		
Quatsino	Thorpe Point	7 2016		Fallow		

*Emamectin Benzoate (Brand Name SLICE)