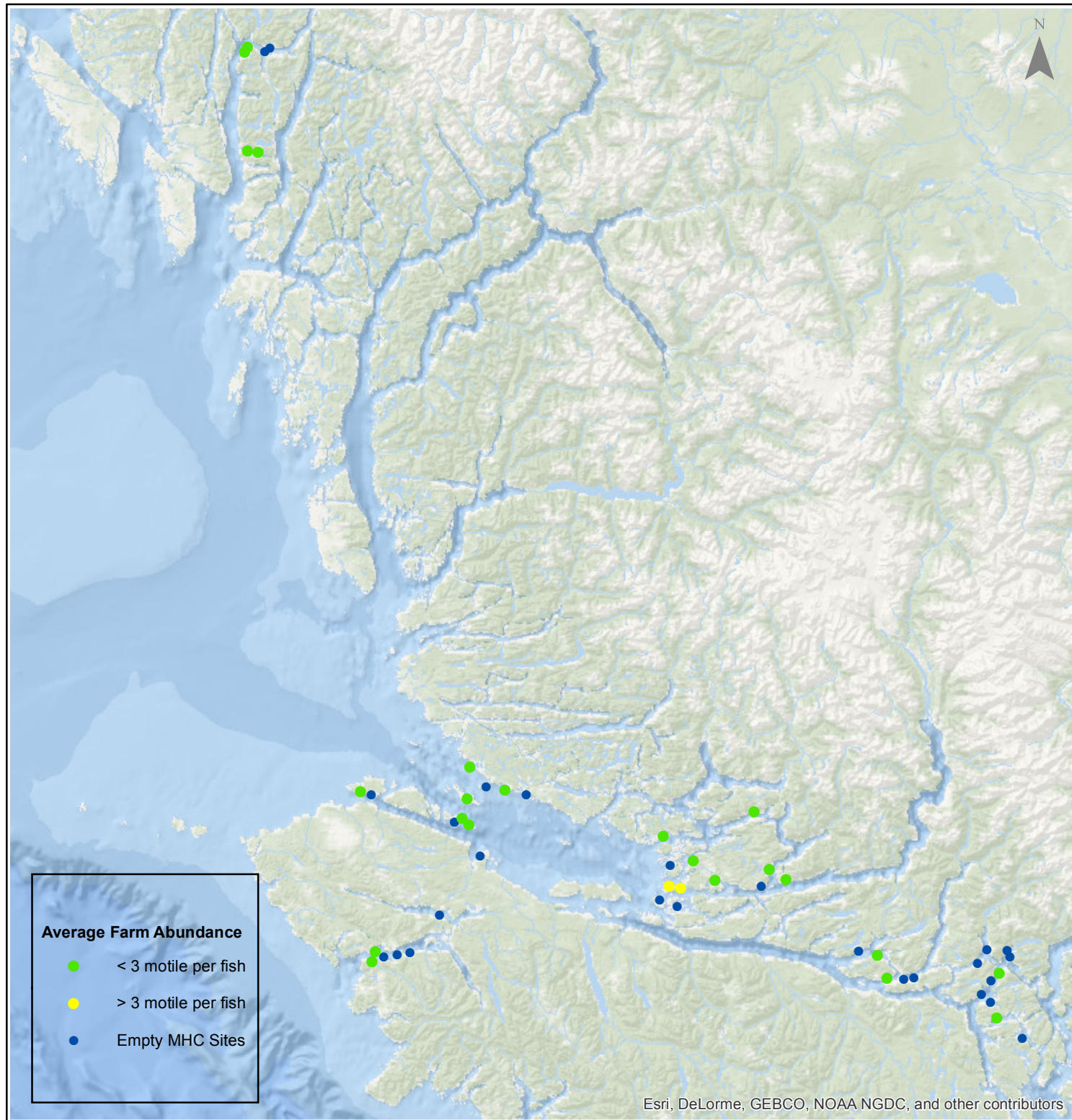


Sea Lice Monitoring - Average Farm Abundance (AFA)

All Sites - January 2016



1:2,500,000



Esri, DeLorme, GEBCO, NOAA NGDC, and other contributors

0 15 30 60 90 120 Kilometers

Coordinate System: WGS 1984 Web Mercator Auxiliary Sphere

Author: BC Centre for Aquatic Health Sciences Society

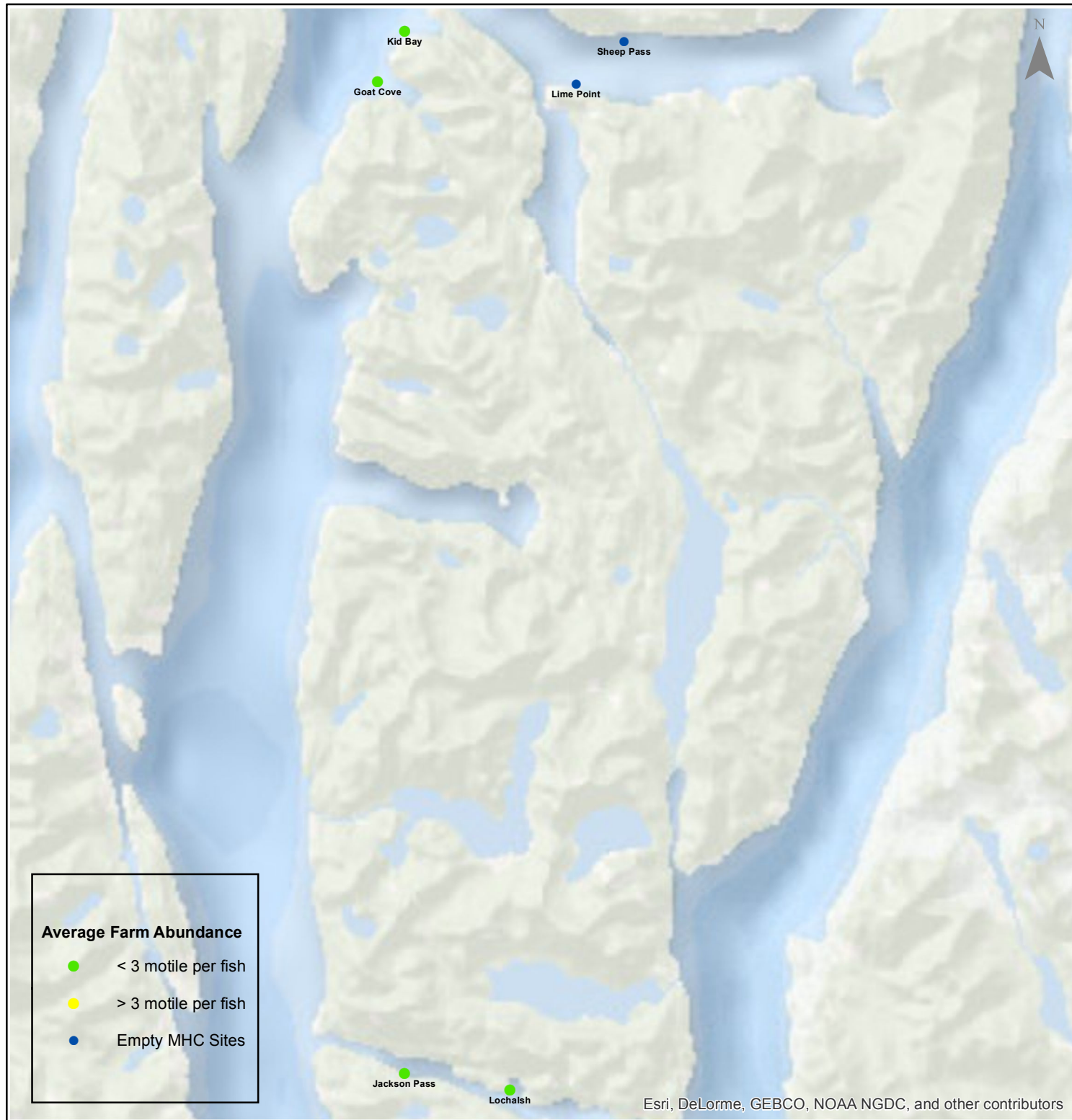
Date: 2/11/2016

Sea Lice Monitoring - Average Farm Abundance (AFA)

Klemtu - January 2016



1:250,000



Average Farm Abundance

- < 3 motile per fish
- > 3 motile per fish
- Empty MHC Sites

Esri, DeLorme, GEBCO, NOAA NGDC, and other contributors

Kilometers

Coordinate System: WGS 1984 Web Mercator Auxiliary Sphere

Author: BC Centre for Aquatic Health Sciences Society

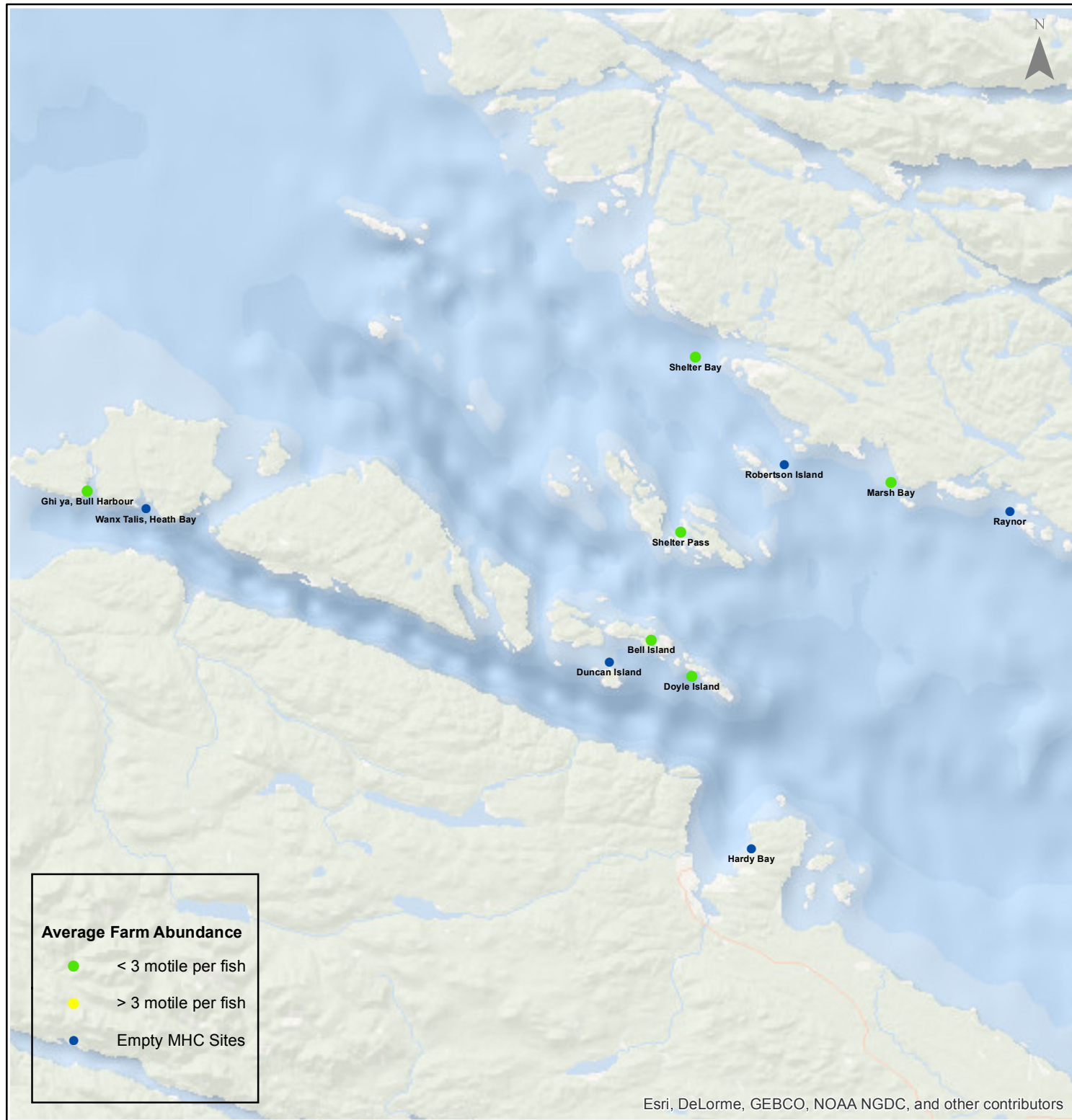
Date: 2/11/2016

Sea Lice Monitoring - Average Farm Abundance (AFA)

Port Hardy - January 2016



1:450,000



Esri, DeLorme, GEBCO, NOAA NGDC, and other contributors

0 3.5 7 14 21 28 Kilometers

Coordinate System: WGS 1984 Web Mercator Auxiliary Sphere

Author: BC Centre for Aquatic Health Sciences Society

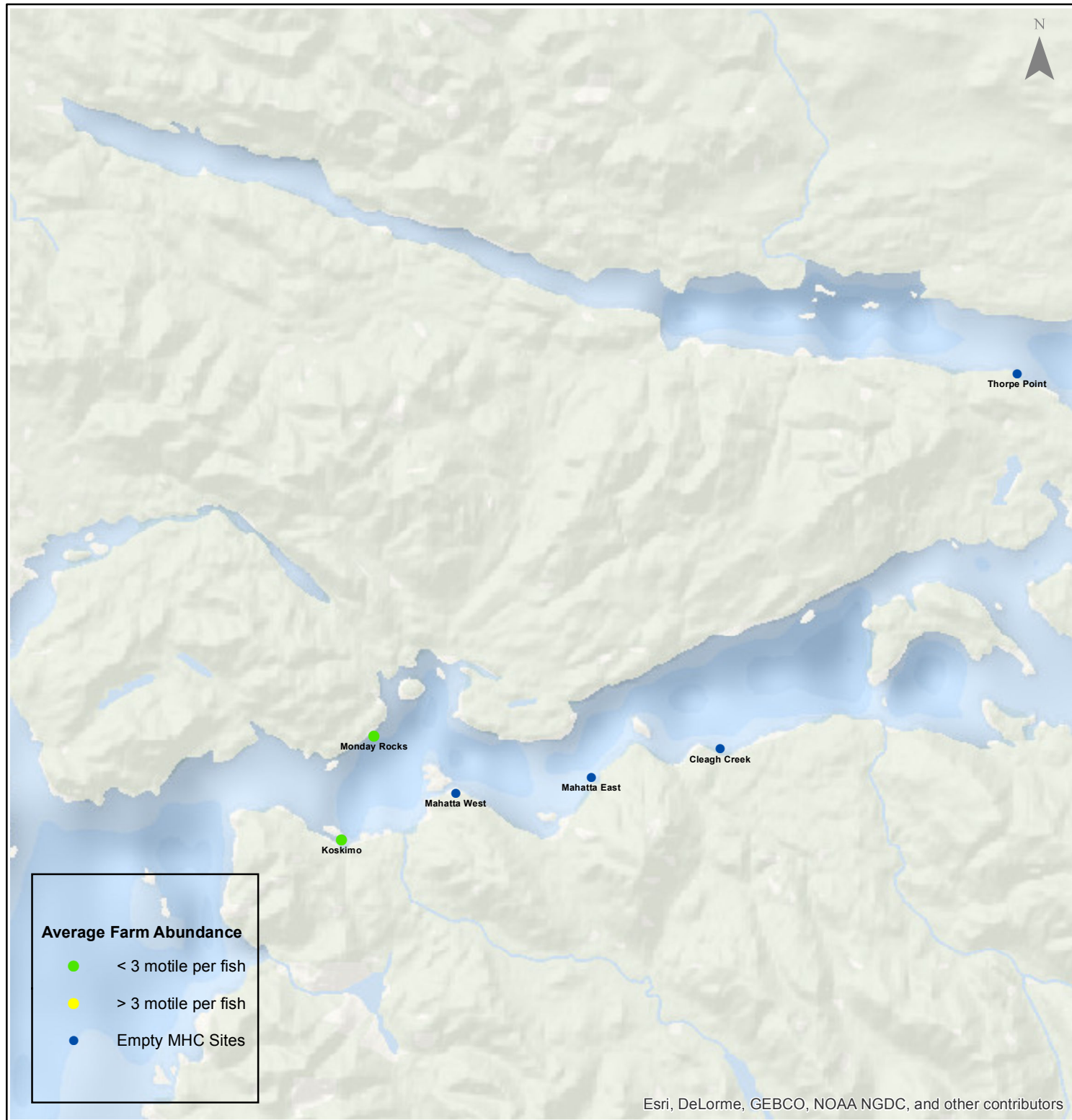
Date: 2/11/2016

Sea Lice Monitoring - Average Farm Abundance (AFA)

Quatsino - January 2016



1:250,000



Esri, DeLorme, GEBCO, NOAA NGDC, and other contributors

0 1.753.5 7 10.5 14 Kilometers

Coordinate System: WGS 1984 Web Mercator Auxiliary Sphere

Author: BC Centre for Aquatic Health Sciences Society

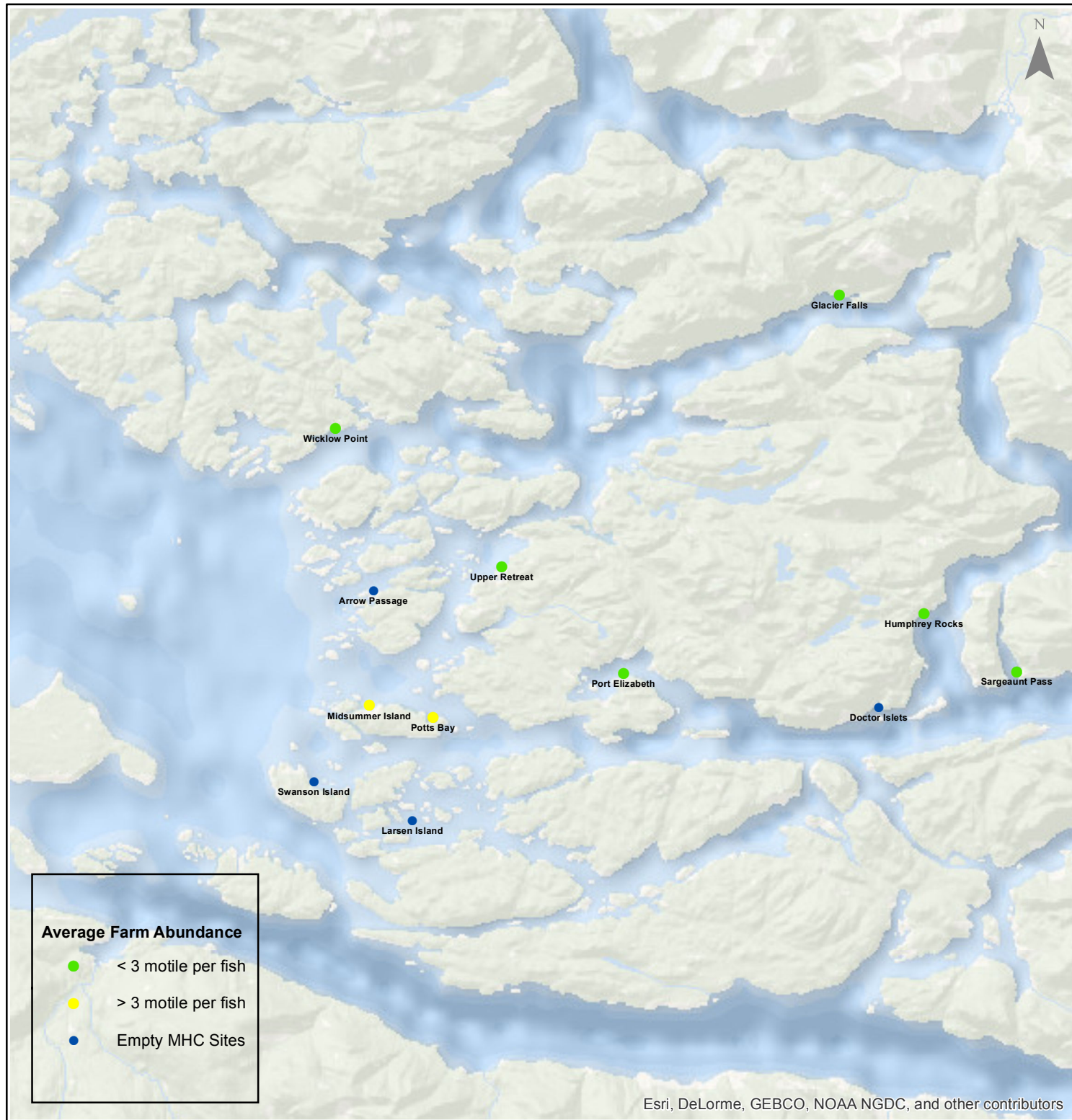
Date: 2/11/2016

Sea Lice Monitoring - Average Farm Abundance (AFA)

Broughton - January 2016



1:450,000



Esri, DeLorme, GEBCO, NOAA NGDC, and other contributors

0 3.5 7 14 21 28 Kilometers

Coordinate System: WGS 1984 Web Mercator Auxiliary Sphere

Author: BC Centre for Aquatic Health Sciences Society

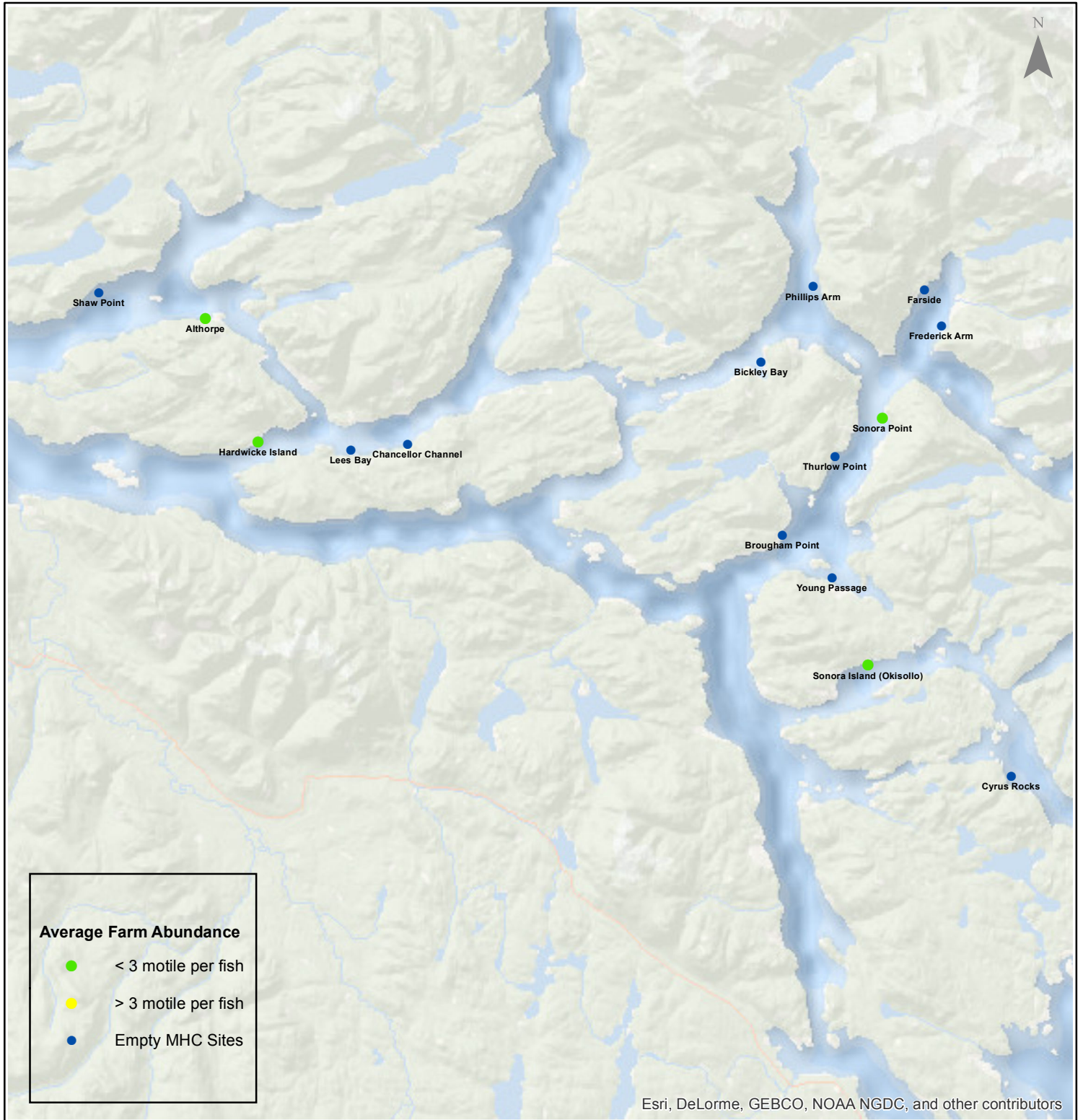
Date: 2/11/2016

Sea Lice Monitoring - Average Farm Abundance (AFA)

Campbell River - January 2016



1:450,000



Average Farm Abundance

- < 3 motile per fish
- > 3 motile per fish
- Empty MHC Sites

Esri, DeLorme, GEBCO, NOAA NGDC, and other contributors

0 3.5 7 14 21 28 Kilometers

Coordinate System: WGS 1984 Web Mercator Auxiliary Sphere

Author: BC Centre for Aquatic Health Sciences Society

Date: 2/11/2016

Sea Lice Monitoring - Average Farm Abundance (AFA)

SiteArea	Facility	Date Sampled	Motile L. salmonis AFA	Memo	EMB* Rx Start Date	H2O2** Rx Start Date
Broughton	Arrow Passage	1 2016		Fallow		
Broughton	Doctor Islets	1 2016		Fallow		
Broughton	Glacier Falls	1 2016	1.62	Treatment pending	6-Jun-15	
Broughton	Humphrey Rocks	1 2016	2.63	Treatment pending		
Broughton	Larsen Island	1 2016		Fallow		
Broughton	Midsummer Island	1 2016	3.29	Treatment pending		
Broughton	Port Elizabeth	1 2016	1.12	Treatment pending		
Broughton	Potts Bay	1 2016	6.83	SLICE	23-Jan-16	
Broughton	Sargeaunt Pass	1 2016	1.06	Treatment pending		
Broughton	Swanson Island	1 2016		Fallow as of Jan 10, 2016		
Broughton	Upper Retreat	1 2016	0.27			
Broughton	Wicklow Point	12 2015	2.22	Harvest ongoing, to be empty early in February	29-Jun-15	
Campbell River	Althorpe	1 2016	1.40		7-Dec-15	
Campbell River	Bickley Bay	1 2016		Fallow		
Campbell River	Brougham Point	1 2016		Fallow		
Campbell River	Chancellor Channel	1 2016		Fallow		
Campbell River	Cyrus Rocks	1 2016		Fallow		
Campbell River	Dunsterville	1 2016		Fallow		
Campbell River	Egerton Creek	1 2016		Fallow		
Campbell River	Farside	1 2016		Fallow		
Campbell River	Frederick Arm	1 2016		Fallow		
Campbell River	Hardwicke Island	1 2016	0.44		26-Nov-15	
Campbell River	Lees Bay	1 2016		Fallow		
Campbell River	Phillips Arm	1 2016		Fallow		
Campbell River	Read Island	1 2016		Fallow		
Campbell River	Shaw Point	1 2016		Fallow		
Campbell River	Sonora Island (Okisollo)	1 2016	0.11		10-Oct-15	
Campbell River	Sonora Point	1 2016	0.16		23-Nov-15	
Campbell River	Thurlow Point	1 2016		Fallow		
Campbell River	Young Passage	1 2016		Fallow		
Klemtu	Goat Cove	1 2016	0.73	Treatment pending	1-Nov-15	16-Oct-15
Klemtu	Jackson Pass	1 2016		Recent smolt entry		
Klemtu	Kid Bay	1 2016	2.19	Treatment pending	1-Nov-15	29-Sep-15
Klemtu	Lime Point	1 2016		Fallow		
Klemtu	Lochalsh	1 2016	0.21			20-Nov-15
Klemtu	Sheep Pass	1 2016		Fallow		
Port Hardy	Bell Island	1 2016		Recent smolt entry		
Port Hardy	Doyle Island	12 2015	0.73	Harvest ongoing, to be empty early in February	17-Jul-15	
Port Hardy	Duncan Island	1 2016		Fallow as of Jan 28, 2016		
Port Hardy	Ghi ya, Bull Harbour	1 2016	0.97			
Port Hardy	Hardy Bay	1 2016		Fallow		
Port Hardy	Marsh Bay	1 2016	0.08		27-Oct-15	
Port Hardy	Raynor	1 2016		Fallow		
Port Hardy	Robertson Island	1 2016		Fallow		
Port Hardy	Shelter Bay	1 2016	0.78	Treatment pending		
Port Hardy	Shelter Pass	1 2016		Recent smolt entry		
Port Hardy	Wanx Talls, Heath Bay	1 2016		Fallow		
Quatsino	Cleagh Creek	1 2016		Fallow		
Quatsino	Koskimo	1 2016	1.87		20-Apr-15	8-Jul-15
Quatsino	Mahatta East	1 2016		Fallow		
Quatsino	Mahatta West	1 2016		Fallow		
Quatsino	Monday Rocks	1 2016	1.23		20-Apr-15	12-Jul-15
Quatsino	Thorpe Point	1 2016		Fallow		

*Emamectin Benzoate (Brand Name SLICE)

** Hydrogen Peroxide (Brand Name Interlox Paramove 50)

