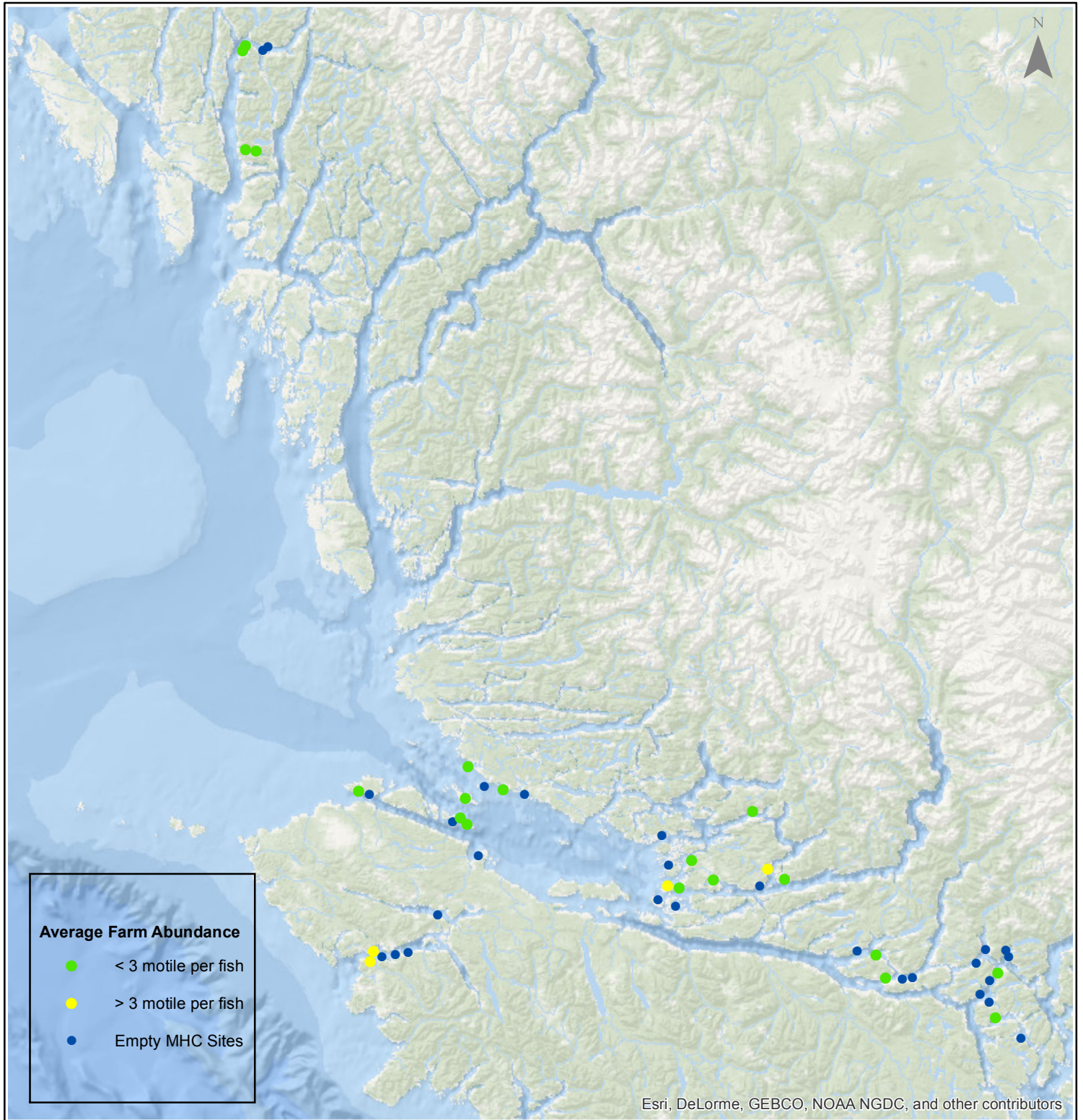


Sea Lice Monitoring - Average Farm Abundance (AFA) All Sites - February 2016



1:2,500,000



Esri, DeLorme, GEBCO, NOAA NGDC, and other contributors

Coordinate System: WGS 1984 Web Mercator Auxiliary Sphere

Author: BC Centre for Aquatic Health Sciences Society

Date: 3/14/2016

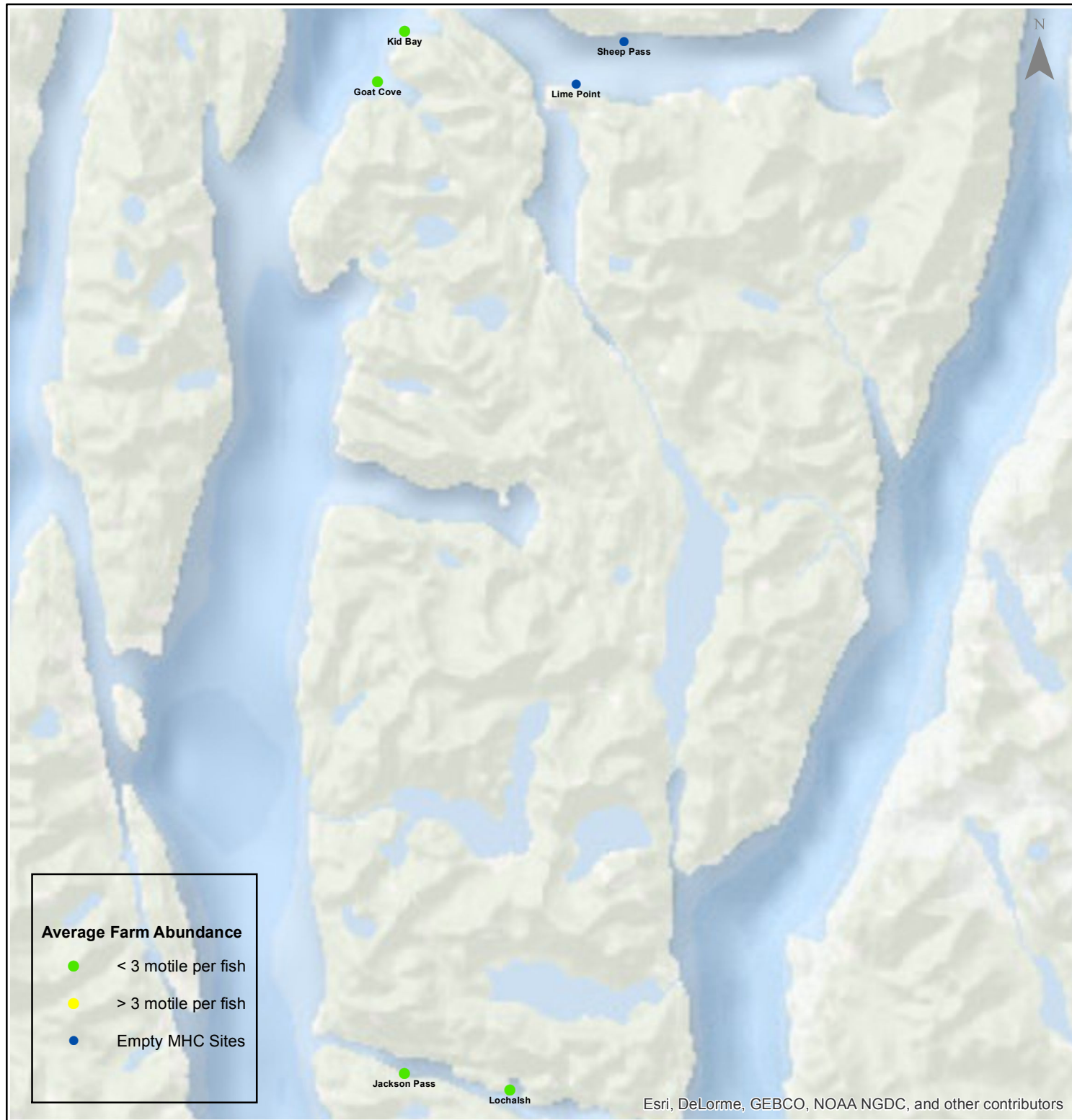
0 15 30 60 90 120 Kilometers

Sea Lice Monitoring - Average Farm Abundance (AFA)

Klemtu - February 2016



1:250,000



Average Farm Abundance

- < 3 motile per fish
- > 3 motile per fish
- Empty MHC Sites

Jackson Pass

Lochalsh

Esri, DeLorme, GEBCO, NOAA NGDC, and other contributors

0 1.753.5 7 10.5 14 Kilometers

Coordinate System: WGS 1984 Web Mercator Auxiliary Sphere

Author: BC Centre for Aquatic Health Sciences Society

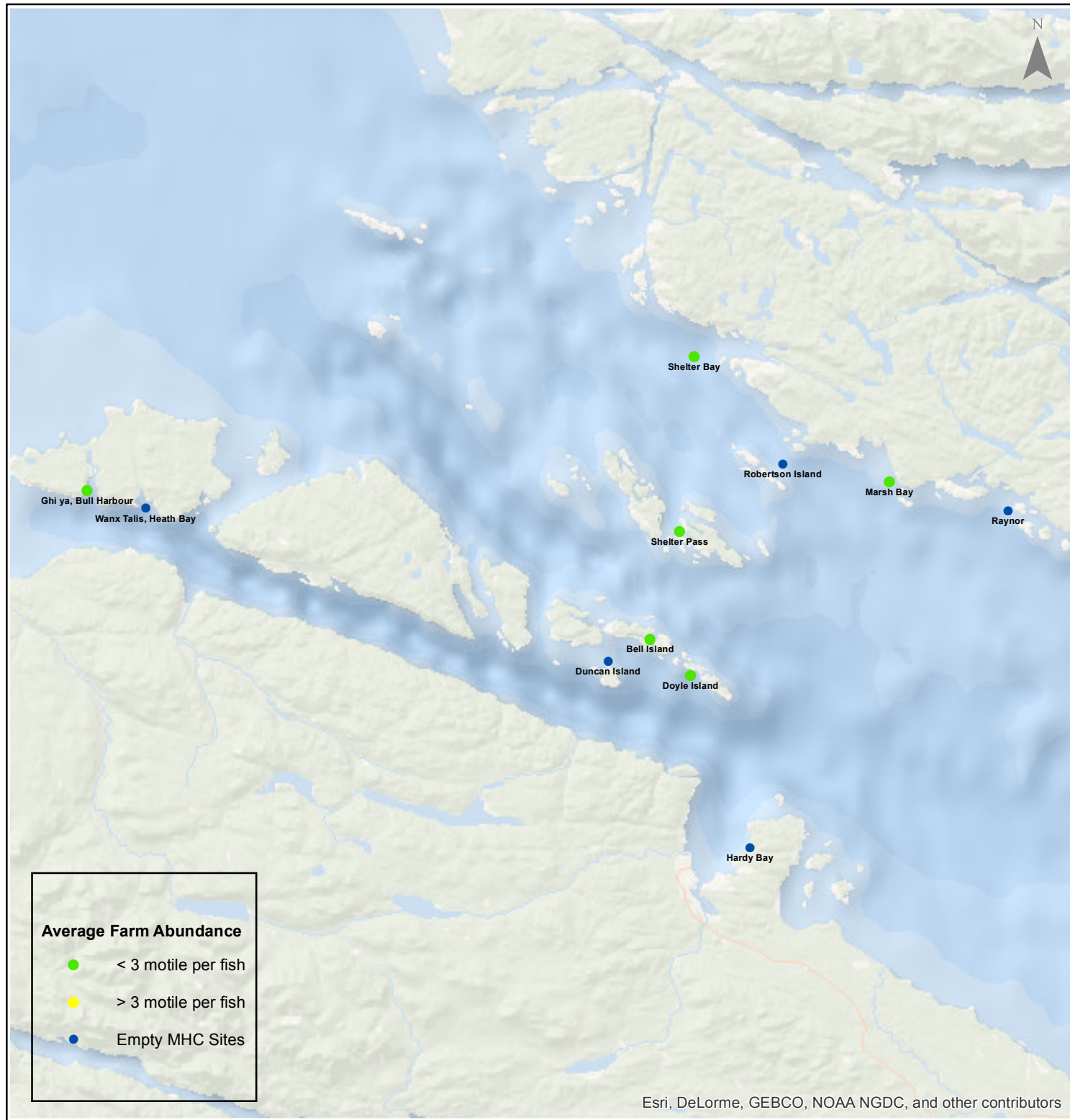
Date: 3/14/2016

Sea Lice Monitoring - Average Farm Abundance (AFA)

Port Hardy - February 2016



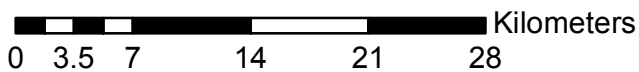
1:450,000



Average Farm Abundance

- < 3 motile per fish
- > 3 motile per fish
- Empty MHC Sites

Esri, DeLorme, GEBCO, NOAA NGDC, and other contributors



Coordinate System: WGS 1984 Web Mercator Auxiliary Sphere

Author: BC Centre for Aquatic Health Sciences Society

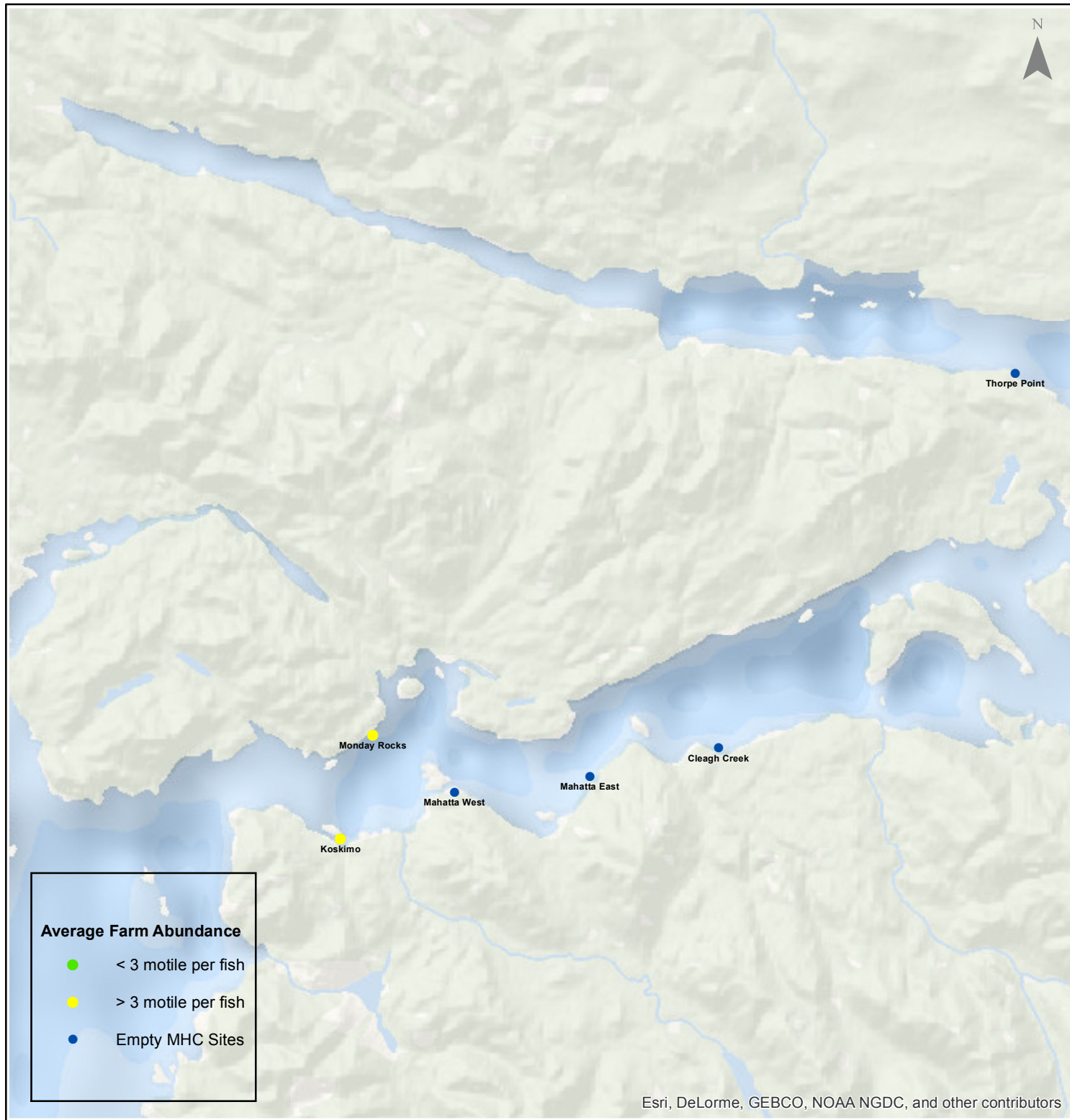
Date: 3/14/2016

Sea Lice Monitoring - Average Farm Abundance (AFA)

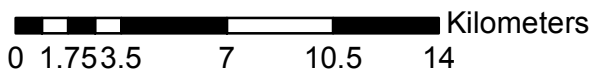
Quatsino - February 2016



1:250,000



Esri, DeLorme, GEBCO, NOAA NGDC, and other contributors



Coordinate System: WGS 1984 Web Mercator Auxiliary Sphere

Author: BC Centre for Aquatic Health Sciences Society

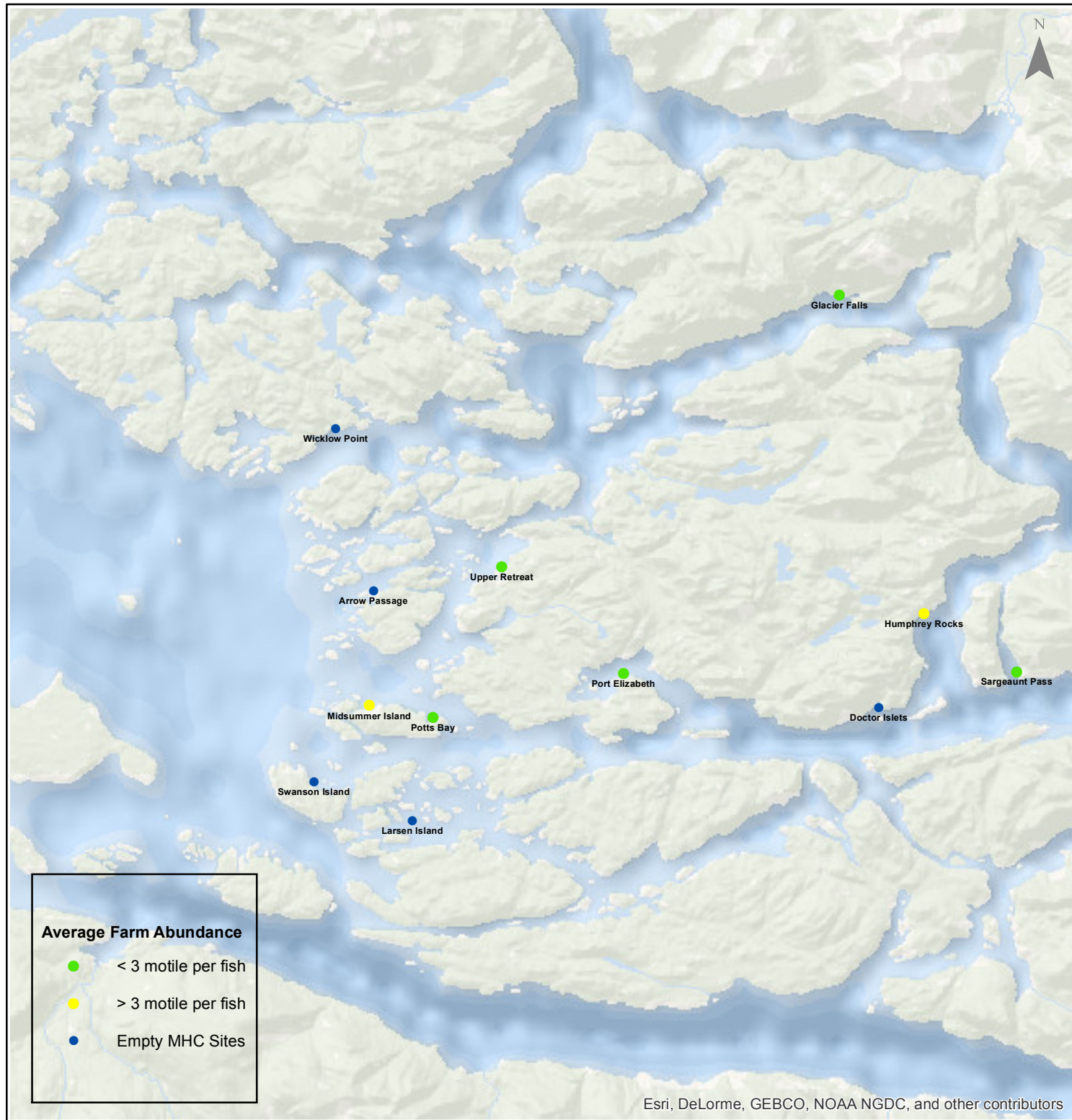
Date: 3/14/2016

Sea Lice Monitoring - Average Farm Abundance (AFA)

Broughton - February 2016



1:450,000



Esri, DeLorme, GEBCO, NOAA NGDC, and other contributors

0 3.5 7 14 21 28 Kilometers

Coordinate System: WGS 1984 Web Mercator Auxiliary Sphere

Author: BC Centre for Aquatic Health Sciences Society

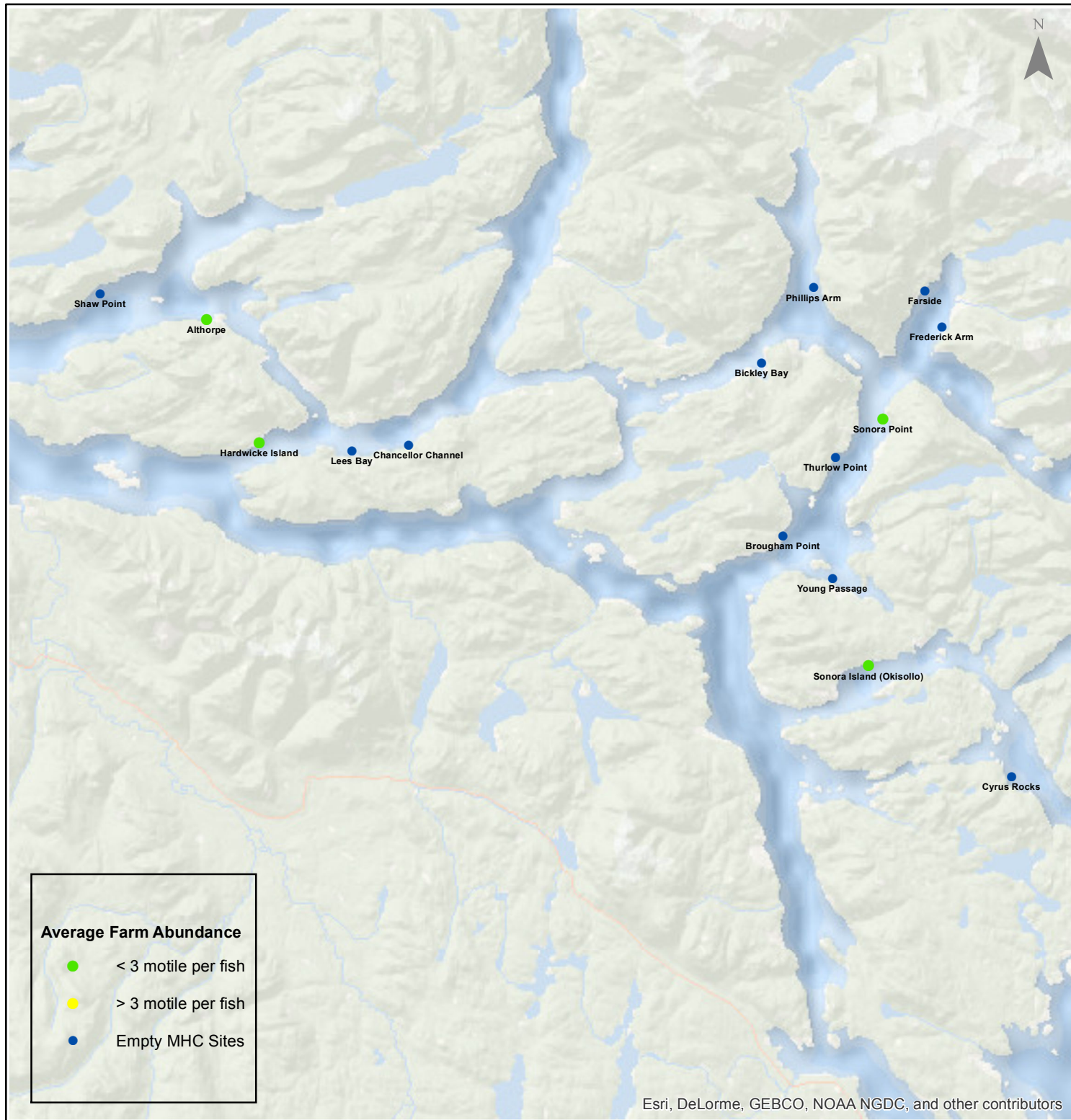
Date: 3/14/2016

Sea Lice Monitoring - Average Farm Abundance (AFA)

Campbell River - February 2016



1:450,000



Esri, DeLorme, GEBCO, NOAA NGDC, and other contributors

0 3.5 7 14 21 28 Kilometers

Coordinate System: WGS 1984 Web Mercator Auxiliary Sphere

Author: BC Centre for Aquatic Health Sciences Society

Date: 3/14/2016

Sea Lice Monitoring - Average Farm Abundance (AFA)

| SiteArea | Facility | Date Sampled | Motile L. salmonis AFA | Memo | EMB* Rx Start Date | H2O2** Rx Start Date |
|----------------|--------------------------|--------------|------------------------|--------------------------|--------------------|----------------------|
| Broughton | Arrow Passage | 2 2016 | | Fallow | | |
| Broughton | Doctor Islets | 2 2016 | | Fallow | | |
| Broughton | Glacier Falls | 2 2016 | 1.53 | SLICE | 18-Feb-16 | |
| Broughton | Humphrey Rocks | 2 2016 | 3.15 | SLICE | 29-Feb-16 | |
| Broughton | Larsen Island | 2 2016 | | Fallow | | |
| Broughton | Midsummer Island | 2 2016 | 4.02 | SLICE | 14-Feb-16 | |
| Broughton | Port Elizabeth | 2 2016 | 0.90 | SLICE | 20-Feb-16 | |
| Broughton | Potts Bay | 2 2016 | 1.45 | | 23-Jan-16 | |
| Broughton | Sargeaunt Pass | 2 2016 | 1.85 | SLICE | 28-Feb-16 | |
| Broughton | Swanson Island | 2 2016 | | Fallow | | |
| Broughton | Upper Retreat | 2 2016 | 0.78 | | | |
| Broughton | Wicklow Point | 2 2016 | | Fallow as of Feb 4, 2016 | | |
| Campbell River | Althorpe | 2 2016 | 1.38 | | 7-Dec-15 | |
| Campbell River | Bickley Bay | 2 2016 | | Fallow | | |
| Campbell River | Brougham Point | 2 2016 | | Fallow | | |
| Campbell River | Chancellor Channel | 2 2016 | | Fallow | | |
| Campbell River | Cyrus Rocks | 2 2016 | | Fallow | | |
| Campbell River | Dunsterville | 2 2016 | | Fallow | | |
| Campbell River | Egerton Creek | 2 2016 | | Fallow | | |
| Campbell River | Farside | 2 2016 | | Fallow | | |
| Campbell River | Frederick Arm | 2 2016 | | Fallow | | |
| Campbell River | Hardwicke Island | 1 2016 | 0.44 | Harvest ongoing | 26-Nov-15 | |
| Campbell River | Lees Bay | 2 2016 | | Fallow | | |
| Campbell River | Phillips Arm | 2 2016 | | Fallow | | |
| Campbell River | Read Island | 2 2016 | | Fallow | | |
| Campbell River | Shaw Point | 2 2016 | | Fallow | | |
| Campbell River | Sonora Island (Okisollo) | 2 2016 | 0.35 | | 10-Oct-15 | |
| Campbell River | Sonora Point | 2 2016 | 0.22 | | 23-Nov-15 | |
| Campbell River | Thurlow Point | 2 2016 | | Fallow | | |
| Campbell River | Young Passage | 2 2016 | | Fallow | | |
| Klemtu | Goat Cove | 2 2016 | 0.30 | H2O2 | 1-Nov-15 | 25-Feb-16 |
| Klemtu | Jackson Pass | 2 2016 | 0.01 | | | |
| Klemtu | Kid Bay | 2 2016 | 1.78 | H2O2 | 1-Nov-15 | 28-Feb-16 |
| Klemtu | Lime Point | 2 2016 | | Fallow | | |
| Klemtu | Lochalsh | 2 2016 | 0.20 | | | 20-Nov-15 |
| Klemtu | Sheep Pass | 2 2016 | | Fallow | | |
| Port Hardy | Bell Island | 2 2016 | 0.27 | | | |
| Port Hardy | Doyle Island | 12 2015 | 0.73 | Harvest ongoing | 17-Jul-15 | |
| Port Hardy | Duncan Island | 2 2016 | | Fallow | | |
| Port Hardy | Ghi ya, Bull Harbour | 2 2016 | 1.91 | treatment pending | | |
| Port Hardy | Hardy Bay | 2 2016 | | Fallow | | |
| Port Hardy | Marsh Bay | 2 2016 | 0.51 | | 27-Oct-15 | |
| Port Hardy | Raynor | 2 2016 | | Fallow | | |
| Port Hardy | Robertson Island | 2 2016 | | Fallow | | |
| Port Hardy | Shelter Bay | 2 2016 | 2.03 | treatment pending | | |
| Port Hardy | Shelter Pass | 2 2016 | 0.00 | | | |
| Port Hardy | Wanx Talis, Heath Bay | 2 2016 | | Fallow | | |
| Quatsino | Cleagh Creek | 2 2016 | | Fallow | | |
| Quatsino | Koskimo | 2 2016 | 3.53 | Harvest pending | 20-Apr-15 | 8-Jul-15 |
| Quatsino | Mahatta East | 2 2016 | | Fallow | | |
| Quatsino | Mahatta West | 2 2016 | | Fallow | | |
| Quatsino | Monday Rocks | 2 2016 | 4.43 | Harvest pending | 20-Apr-15 | 12-Jul-15 |
| Quatsino | Thorpe Point | 2 2016 | | Fallow | | |

*Emamectin Benzoate (Brand Name SLICE)

** Hydrogen Peroxide (Brand Name Interlox Paramove 50)

