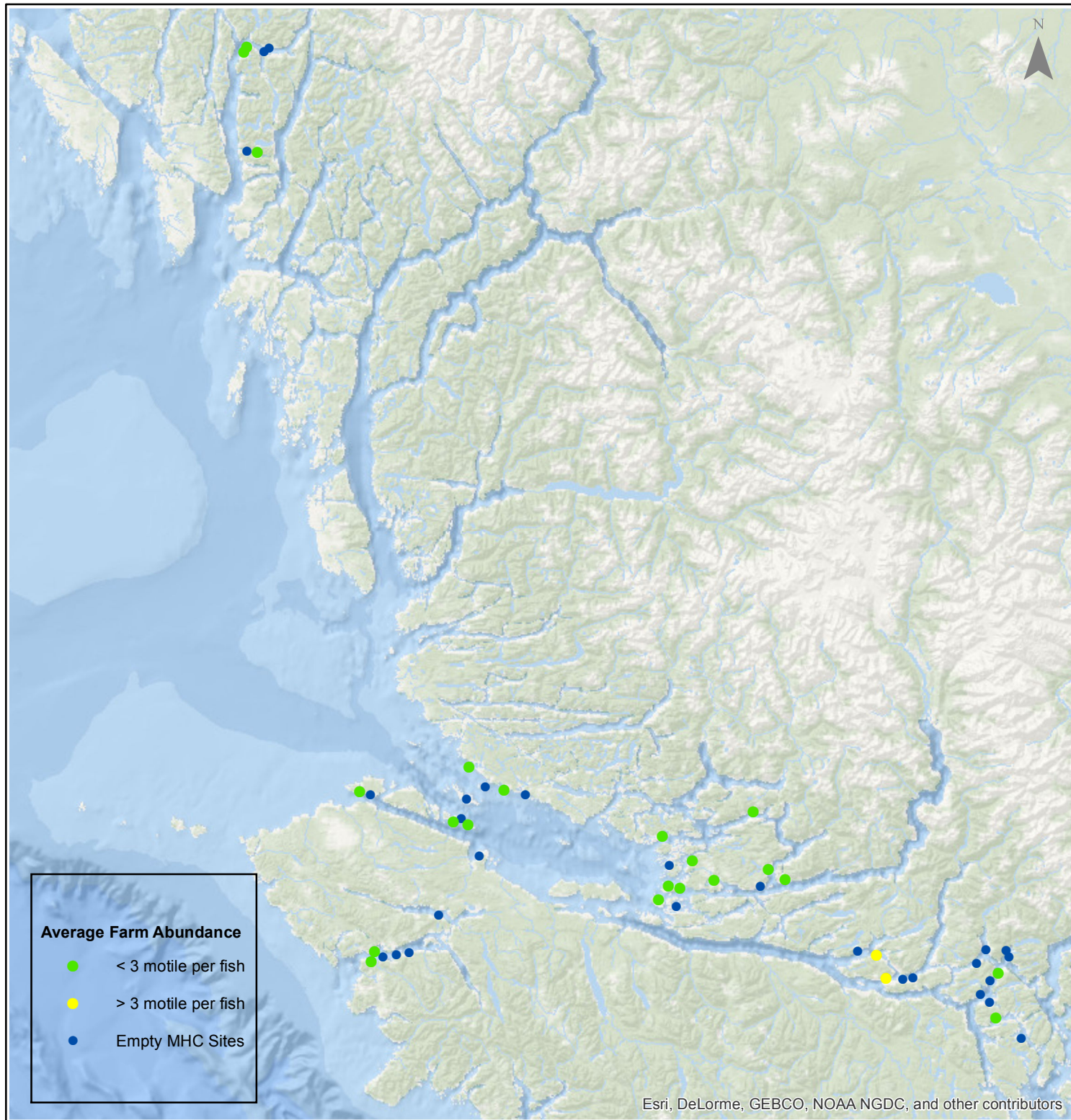


# Sea Lice Monitoring - Average Farm Abundance (AFA)

*All Sites - December 2015*



1:2,500,000



Esri, DeLorme, GEBCO, NOAA NGDC, and other contributors

0 15 30 60 90 120 Kilometers

Coordinate System: WGS 1984 Web Mercator Auxiliary Sphere

Author: BC Centre for Aquatic Health Sciences Society

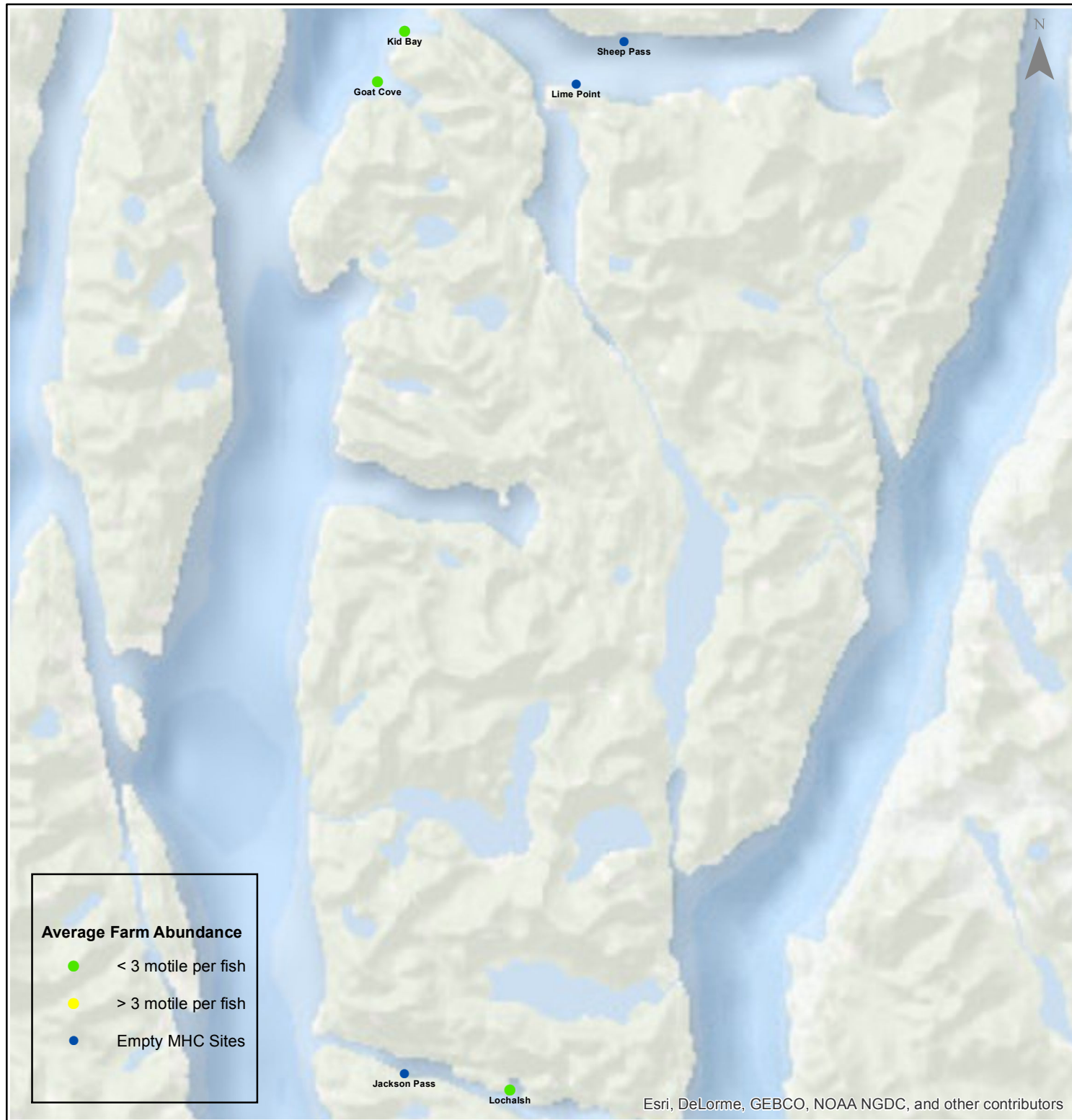
Date: 1/14/2016

# Sea Lice Monitoring - Average Farm Abundance (AFA)

*Klemtu - December 2015*



1:250,000



0 1.753.5 7 10.5 14 Kilometers

Coordinate System: WGS 1984 Web Mercator Auxiliary Sphere

Author: BC Centre for Aquatic Health Sciences Society

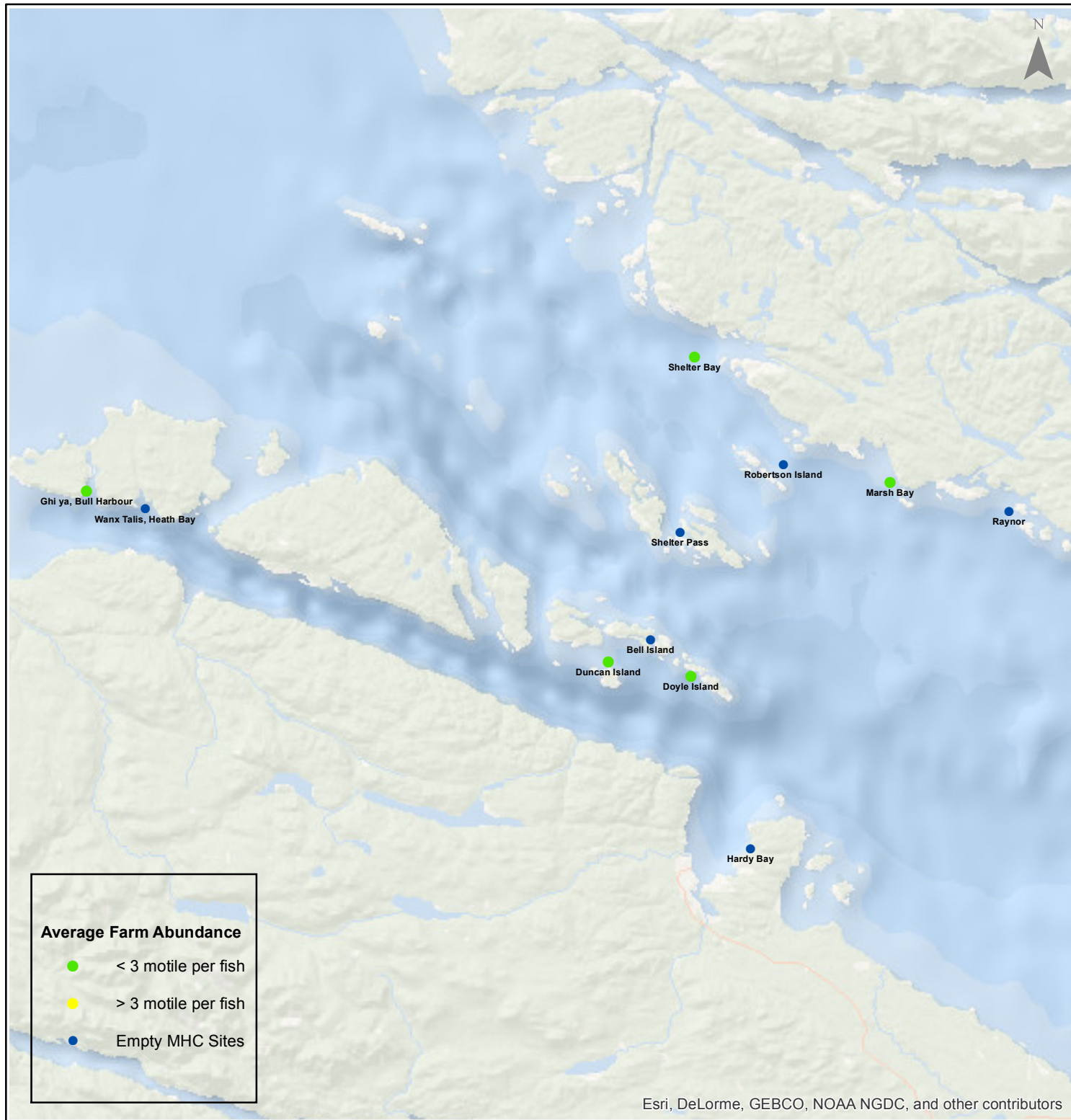
Date: 1/14/2016

# Sea Lice Monitoring - Average Farm Abundance (AFA)

## Port Hardy - December 2015



1:450,000



0 3.5 7 14 21 28 Kilometers

Coordinate System: WGS 1984 Web Mercator Auxiliary Sphere

Author: BC Centre for Aquatic Health Sciences Society

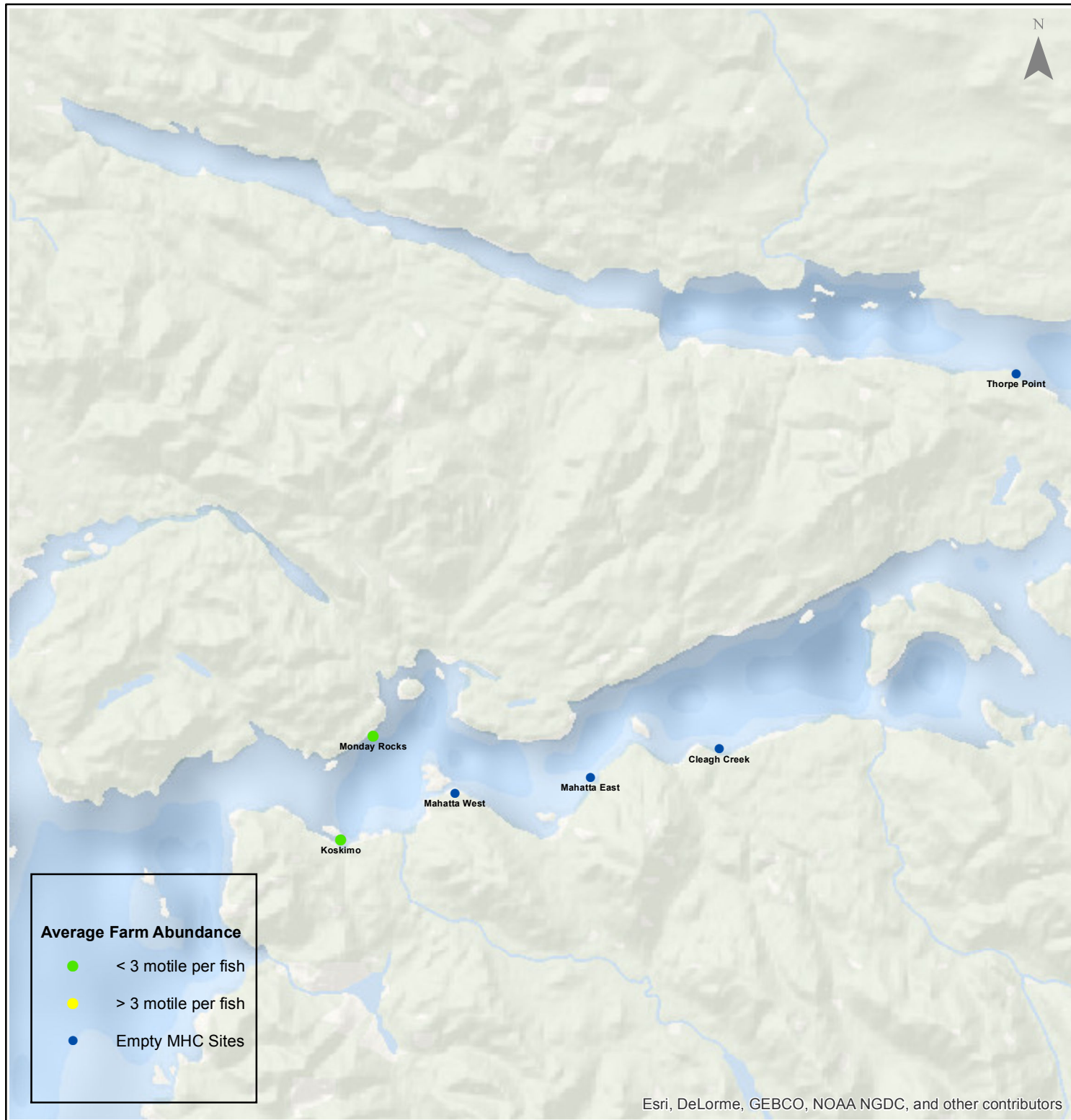
Date: 1/14/2016

# Sea Lice Monitoring - Average Farm Abundance (AFA)

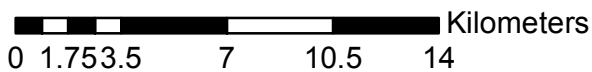
## Quatsino - December 2015



1:250,000



Esri, DeLorme, GEBCO, NOAA NGDC, and other contributors



Coordinate System: WGS 1984 Web Mercator Auxiliary Sphere

Author: BC Centre for Aquatic Health Sciences Society

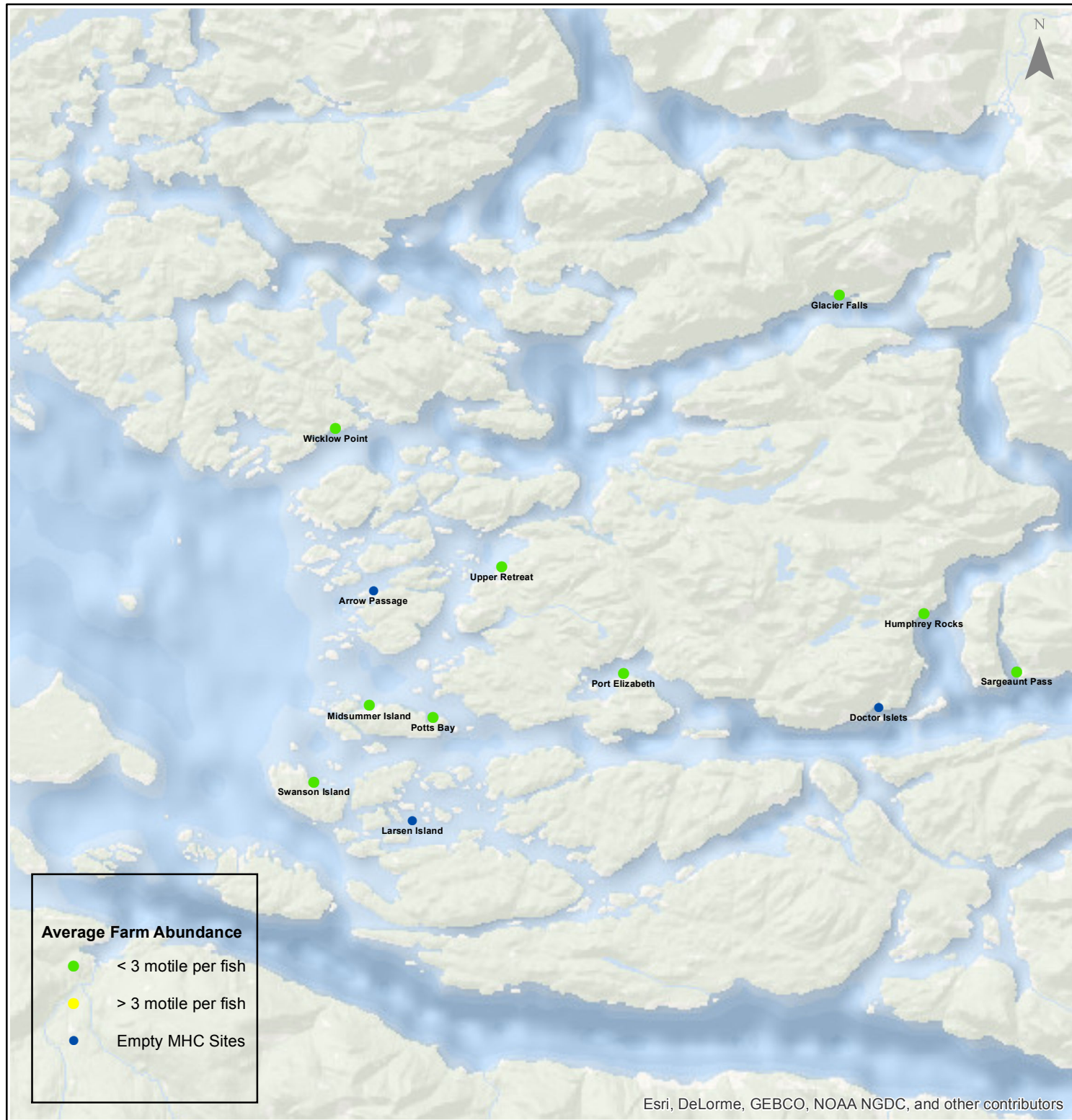
Date: 1/14/2016

# Sea Lice Monitoring - Average Farm Abundance (AFA)

## *Broughton - December 2015*



1:450,000



Esri, DeLorme, GEBCO, NOAA NGDC, and other contributors

0 3.5 7 14 21 28 Kilometers

Coordinate System: WGS 1984 Web Mercator Auxiliary Sphere

Author: BC Centre for Aquatic Health Sciences Society

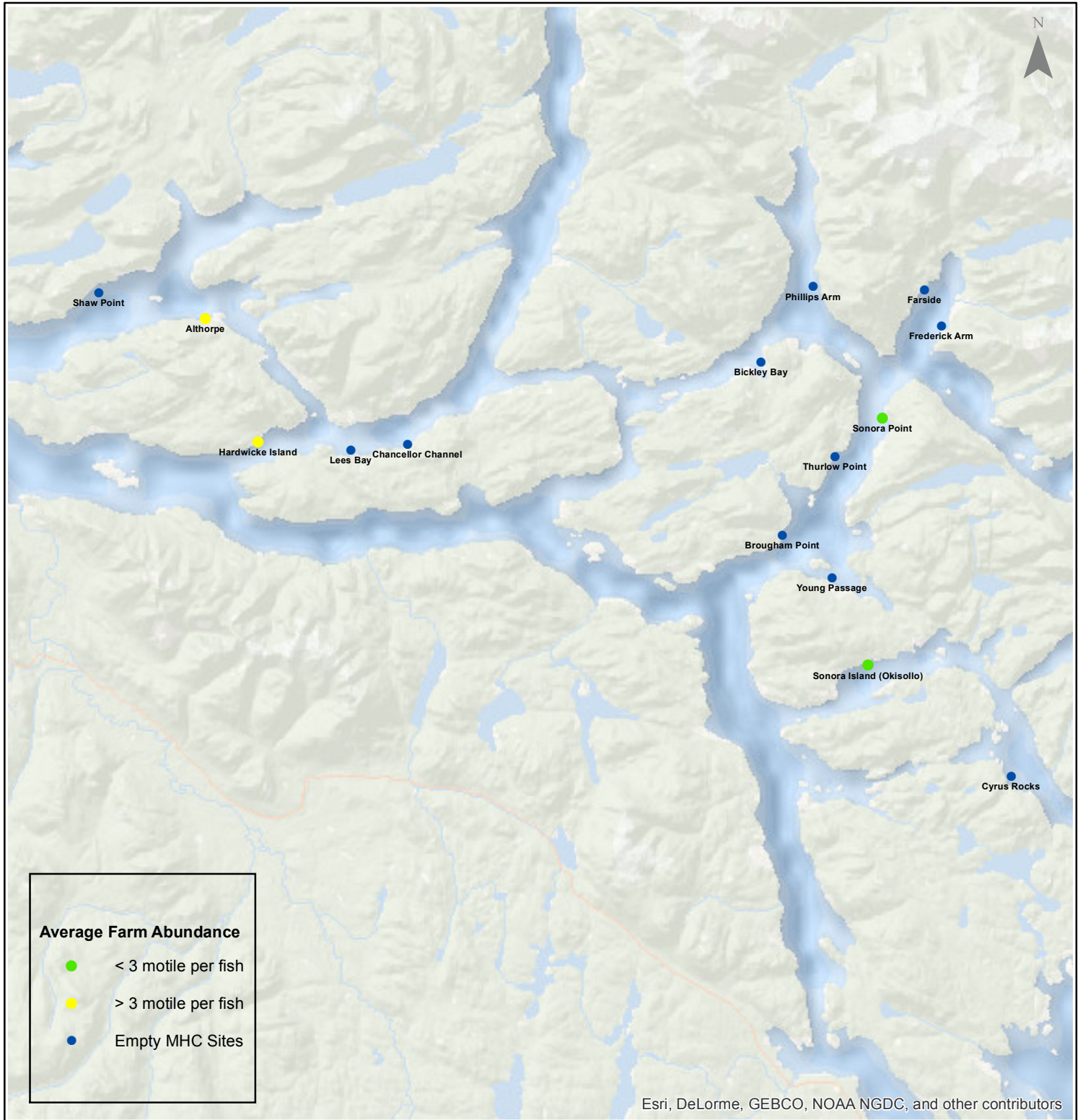
Date: 1/14/2016

# Sea Lice Monitoring - Average Farm Abundance (AFA)

## Campbell River - December 2015



1:450,000



Esri, DeLorme, GEBCO, NOAA NGDC, and other contributors

0 3.5 7 14 21 28 Kilometers

Coordinate System: WGS 1984 Web Mercator Auxiliary Sphere

Author: BC Centre for Aquatic Health Sciences Society

Date: 1/14/2016

Sea Lice Monitoring - Average Farm Abundance (AFA)

SiteArea	Facility	Date Sampled	Motile L. salmonis AFA	Memo	EMB+ Rx Start Date	H2O2** Rx Start Date
Broughton	Arrow Passage	12 2015		Fallow		
Broughton	Doctor Islets	12 2015		Fallow as of Dec 1, 2015	15-Feb-15	
Broughton	Glacier Falls	12 2015	1.25		6-Jun-15	
Broughton	Humphrey Rocks	12 2015	1.90			
Broughton	Larsen Island	12 2015		Fallow		
Broughton	Midsummer Island	12 2015	2.30			
Broughton	Port Elizabeth	12 2015	0.20			
Broughton	Potts Bay	12 2015	2.85	Treatment pending	13-Apr-15	
Broughton	Sargeaunt Pass	12 2015	0.07			
Broughton	Swanson Island	11 2015	2.02	Harvest ongoing, site to be empty early in January	15-Feb-15	
Broughton	Upper Retreat	12 2015	0.08			
Broughton	Wicklow Point	12 2015	2.22		29-Jun-15	
Campbell River	Althorpe	12 2015	4.33	SLICE	7-Dec-15	
Campbell River	Bickley Bay	12 2015		Fallow		
Campbell River	Brougham Point	12 2015		Fallow		
Campbell River	Chancellor Channel	12 2015		Fallow		
Campbell River	Cyrus Rocks	12 2015		Fallow		
Campbell River	Dunsterville	12 2015		Fallow		
Campbell River	Egerton Creek	12 2015		Fallow		
Campbell River	Farside	12 2015		Fallow		
Campbell River	Frederick Arm	12 2015		Fallow		
Campbell River	Hardwicke Island	12 2015	3.75	Harvest to commence in February	26-Nov-15	
Campbell River	Lees Bay	12 2015		Fallow		
Campbell River	Phillips Arm	12 2015		Fallow		
Campbell River	Read Island	12 2015		Fallow		
Campbell River	Shaw Point	12 2015		Fallow		
Campbell River	Sonora Island (Okisollo)	12 2015	0.10		10-Oct-15	
Campbell River	Sonora Point	12 2015	0.37		23-Nov-15	
Campbell River	Thurlow Point	12 2015		Fallow		
Campbell River	Young Passage	12 2015		Fallow		
Klemtu	Goat Cove	12 2015	1.06		1-Nov-15	16-Oct-15
Klemtu	Jackson Pass	12 2015		Fallow		
Klemtu	Kid Bay	12 2015	2.33		1-Nov-15	29-Sep-15
Klemtu	Lime Point	12 2015		Fallow		
Klemtu	Lochalsh	12 2015	0.33			20-Nov-15
Klemtu	Sheep Pass	12 2015		Fallow		
Port Hardy	Bell Island	12 2015		Fallow		
Port Hardy	Doyle Island	12 2015	0.73		17-Jul-15	
Port Hardy	Duncan Island	11 2015	0.42	Harvest ongoing, site to be empty early in January	19-Jul-15	
Port Hardy	Ghi ya, Bull Harbour	12 2015	1.05			
Port Hardy	Hardy Bay	12 2015		Fallow		
Port Hardy	Marsh Bay	12 2015	0.30		27-Oct-15	
Port Hardy	Raynor	12 2015		Fallow		
Port Hardy	Robertson Island	12 2015		Fallow		
Port Hardy	Shelter Bay	12 2015	1.08			
Port Hardy	Shelter Pass	12 2015		Fallow		
Port Hardy	Wanx Talls, Heath Bay	12 2015		Fallow		
Quatsino	Cleagh Creek	12 2015		Fallow		
Quatsino	Koskimo	12 2015	0.88		20-Apr-15	8-Jul-15
Quatsino	Mahatta East	12 2015		Fallow		
Quatsino	Mahatta West	12 2015		Fallow		
Quatsino	Monday Rocks	12 2015	1.42		20-Apr-15	12-Jul-15
Quatsino	Thorpe Point	12 2015		Fallow		

\* Emamectin Benzoate (Brand Name SLICE)

\*\* Hydrogen Peroxide (Brand Name Interox Paramove 50)